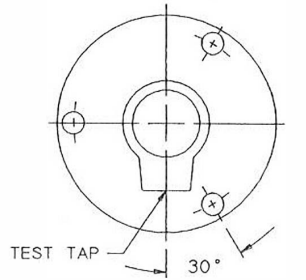
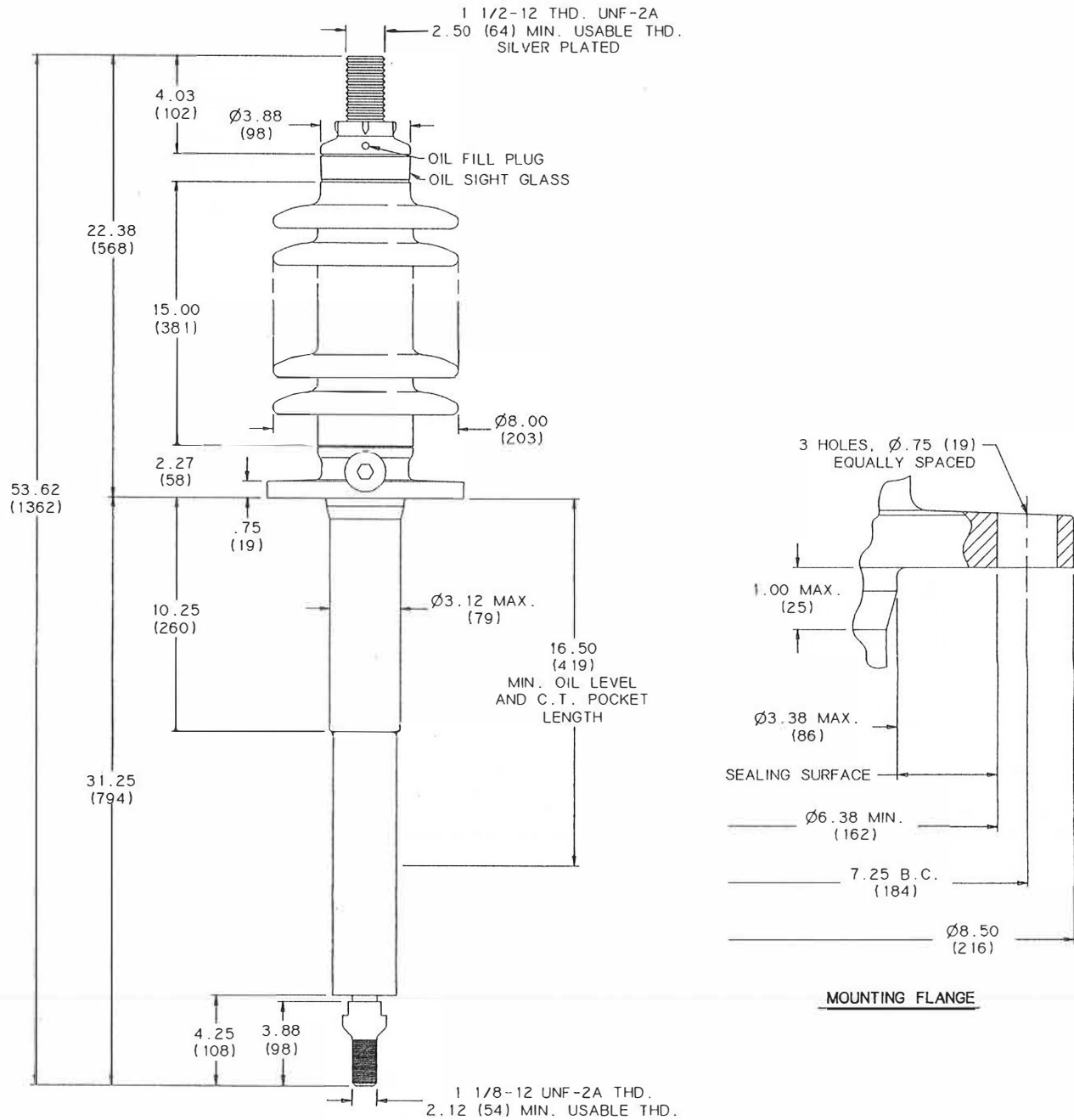


APR 15 1997

		TITLE		DWG.	CATALOG NUMBER	UPPER PORCELAIN GLAZE COLOR
		PRC BUSHING		SD	B-89311-106	CHOCOLATE
DWG. DATE	REV. DATE	MODIFIED FLANGE WITH (3) $\phi$ .75 (19) HOLES. 1 1/8-12 THD. BOTTOM TERMINAL ADAPTOR		SD	B-89311-106-70	LT. GRAY No. 70
MIN. CREEP	41.00 (1041)	KV CLASS	34.5 KV	CURRENT RATING		
CREEPAGE PER Uy	1.86 (47)	Uy	22 KV	TEST STANDARD	IEEE	NET WEIGHT
MIN. STRIKE DIST.	17.50 (444)	BIL	200 KV	ANGLE INCLINATION FROM VERTICAL = 0° TO 70°		1200 AMP BOTTOM CONNECTED @ 95°C MAX. OIL TEMPERATURE



FLANGE ALIGNMENT DIAGRAM  
TOP VIEW

NOTE TO PURCHASER  
ALL SALES OF LAPP PRODUCTS ARE  
SUBJECT TO OUR STANDARD TERMS  
AND CONDITIONS AND THE LIMITED  
WARRANTIES THEREUNDER

7A2A

DIMENSIONS IN INCHES (MILLIMETERS)

LAST REVISION