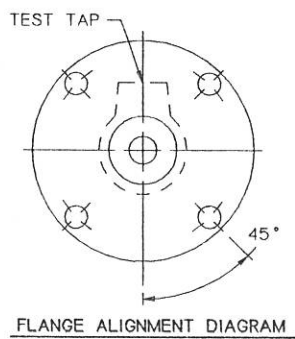
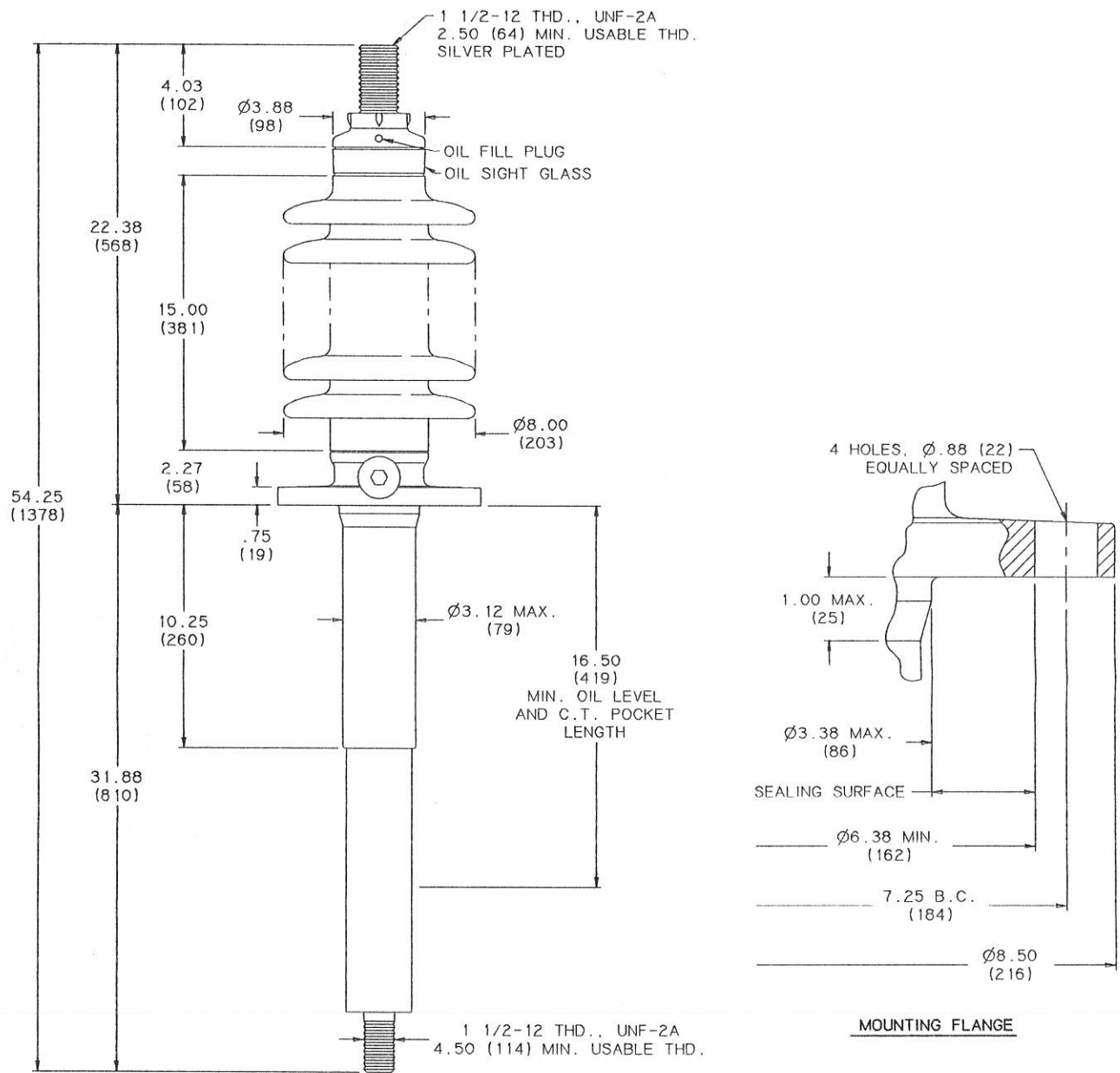


		TITLE		DWG.	CATALOG NUMBER	UPPER PORCELAIN GLAZE COLOR
		PRC BUSHING		SD	B-89311-69	CHOCOLATE
		2.38 (60) LONGER BELOW FLANGE		SD	B-89311-69-70	LT. GRAY No.70
MIN. CREEP	41.00 (1041)	kV CLASS	34.5 kV	CURRENT RATING		
CREEPAGE PER Uy	1.86 (47)	Uy	22 kV	TEST STANDARD	IEEE	NET WEIGHT
MIN. STRIKE DIST.	17.50 (444)	BIL	200 kV	ANGLE INCLINATION FROM VERTICAL = 0° TO 70°		1200 AMP BOTTOM CONNECTION @ 95°C MAX. OIL TEMPERATURE



MOUNTING FLANGE

NOTE TO PURCHASER  
ALL SALES OF LAPP PRODUCTS ARE  
SUBJECT TO OUR STANDARD TERMS  
AND CONDITIONS AND THE LIMITED  
WARRANTIES THEREUNDER

7A2A

DIMENSIONS IN INCHES (MILLIMETERS)

LAST REVISION NET WEIGHT WAS 70.