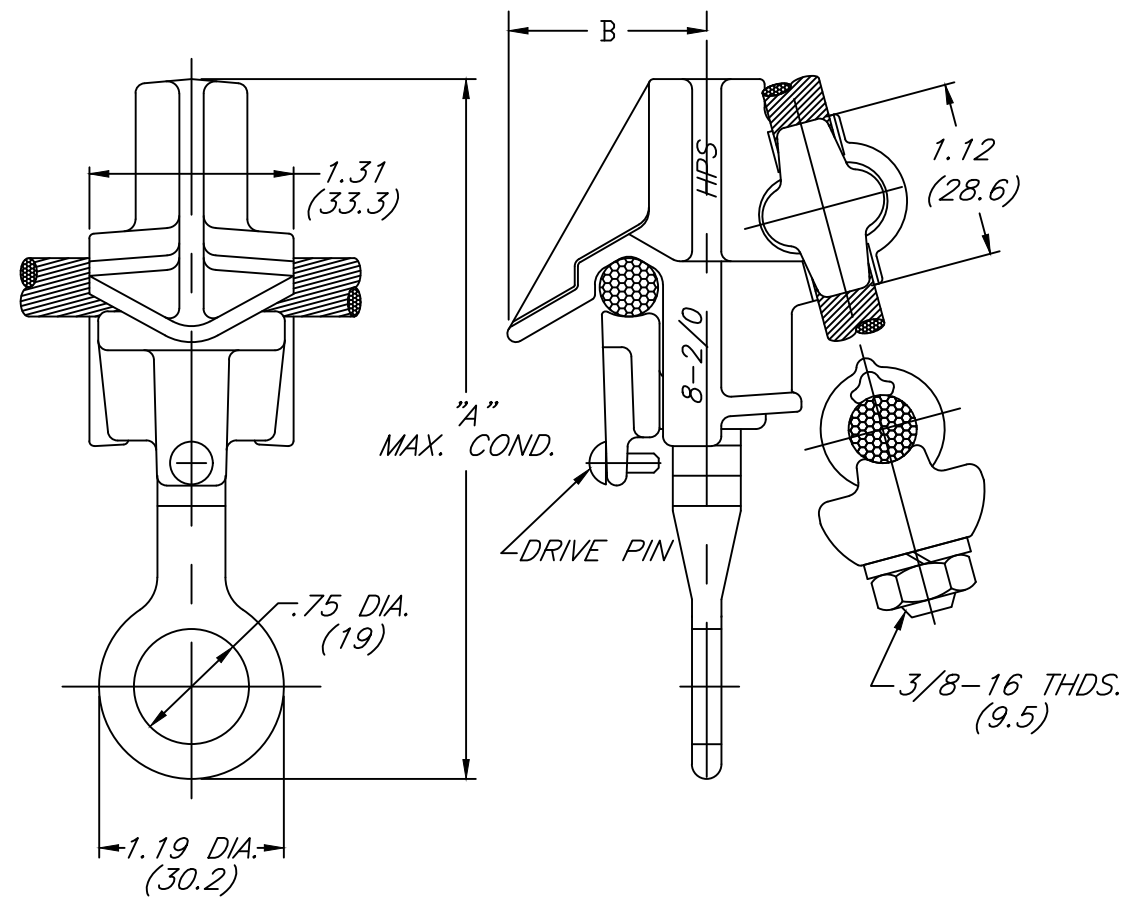


CONDUCTOR RANGE  
 MAIN: #8 SOL. - 2/0 STR. CU.  
 (3 - 10.5)  
 TAP: #8 SOL. - 2/0 STR. CU.  
 (3 - 10.5)

CATALOG #	"A" INCHES (mm)	"B" INCHES (mm)
BC-2/0	4.50 (114.3)	1.28 (32.5)
BC-2/0 UK	5.50 (139.7)	1.28 (32.5)
BC-2/0 LD	4.50 (114.3)	2.00 (50.8)

NOTES:

- MATERIAL: BODY AND KEEPER - # 123 BRASS ALLOY OR SILICON BRONZE ALLOY.  
 EYEBOLT - 112 ALUMINUM BRONZE.  
 EYE STEM - SILICON BRONZE OR STAINLESS STEEL.  
 EYEBOLT, NUT AND LOCKWASHER - STAINLESS STEEL.  
 EYE STEM WASHER - STAINLESS STEEL.  
 DRIVE PIN - STAINLESS STEEL.
- RECOMMENDED TORQUE: EYEBOLT - 240 LB-IN (TAP)  
 EYE STEM - 200 LB-IN (MAIN)
- CLAMP MAY BE SUPPLIED WITH FLOWED TIN PLATING BY ADDING 'FTP' SUFFIX TO CATALOG NUMBER. CLAMP WILL HAVE PLATED BODY, KEEPER AND EYEBOLT.
- CLAMP MAY BE SUPPLIED WITH A PETROLEUM BASE SEALANT COATING IN MAIN GROOVE AND ENCLOSED IN A POLYETHYLENE BAG BY ADDING 'XB' SUFFIX TO CATALOG NUMBER. SEE SPECIFICATION 2820 FOR INHIBITOR APPLICATION.



69432	04-25-2017	ZP	ZP
EC #	DATE	CHG BY	RESP ENG
DESC OF DWG: UPDATED MATERIAL AND MISSING INFORMATION TO ADD SILICON BRONZE. SEE EC DESCRIPTION.			
REASON (S) FOR CHANGE: --			
DISPOSITION OF MAT'L: --			

ANDERSON  
 TOLERANCE CHART  
 0.0 = +/- 0.10 ANGLES +/- 30'  
 0.00 = +/- 0.030 DO NOT USE  
 0.000 = +/- 0.015 FRACTIONS

CONFIDENTIAL: THIS DRAWING AND ITS CONTENTS ARE CONFIDENTIAL AND THE EXCLUSIVE PROPERTY OF HUBBELL POWER SYSTEMS. NO PUBLICATION, DISTRIBUTION OR COPIES MAY BE MADE WITHOUT THE WRITTEN CONSENT OF HUBBELL POWER SYSTEMS. HUBBELL POWER SYSTEMS UNPUBLISHED. ALL RIGHTS RESERVED UNDER THE COPYRIGHT LAWS.

HUBBELL POWER SYSTEMS			
TITLE BC-2/0 BRONZE HOT LINE CLAMP			
SIZE B	DWG NO. C-14595	CAT / PART / ASSY NO. SEE CHART	REV 14
DO NOT SCALE THIS DRAWING	DRN BY MAH	DATE 09/27/00	SHEET 1 OF 2