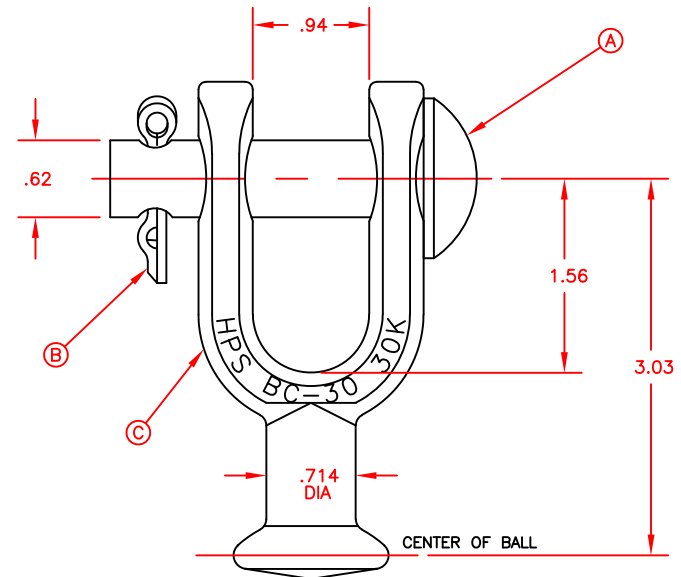


NOTES:

1. MATERIAL—BODY & CLEVIS PIN—GALV STEEL
COTTER PIN— STAINLESS STEEL
2. 30,000 LBS ULT STRENGTH
3. FOR USE WITH INSULATORS CLASS
52-3/52-5 PER ANSI C29.2
4. GALVANIZED PER ASTM A153



ANDERSON
TOLERANCE CHART



HUBBELL® POWER SYSTEMS
BALL CLEVIS

DESC OF DWG:

REASON (S) FOR CHANGE: --

DISPOSITION OF MAT'L: --

CONFIDENTIAL: THIS DRAWING AND ITS
CONTENTS ARE CONFIDENTIAL AND THE
EXCLUSIVE PROPERTY OF HUBBELL
POWER SYSTEMS. NO PUBLICATION,
DISTRIBUTION OR COPIES MAY BE MADE
WITHOUT THE WRITTEN CONSENT OF
HUBBELL POWER SYSTEMS.
HUBBELL POWER SYSTEMS UNPUBLISHED
ALL RIGHTS RESERVED UNDER THE
COPYRIGHT LAWS.

TITLE

SIZE
A

DWG NO.

CUTSHEET

CAT / PART / ASSY NO.

BC-30

REV
A

DO NOT SCALE
THIS DRAWING

DRN BY GD

DATE 11/14/12

SHEET