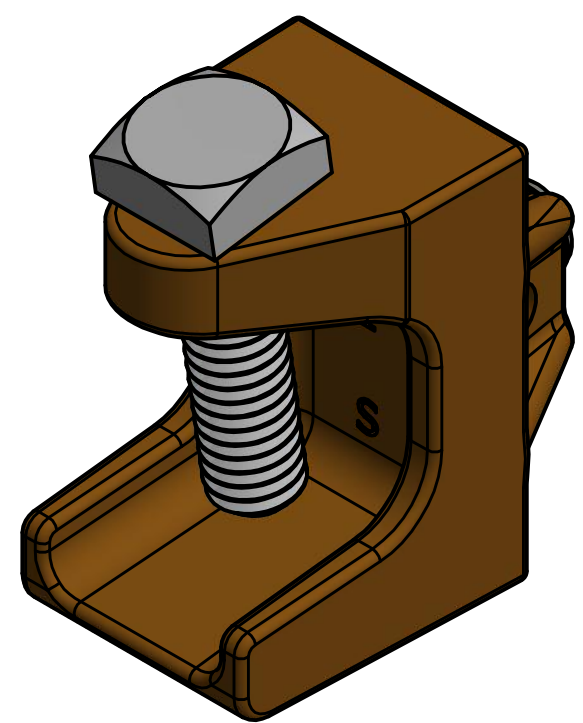
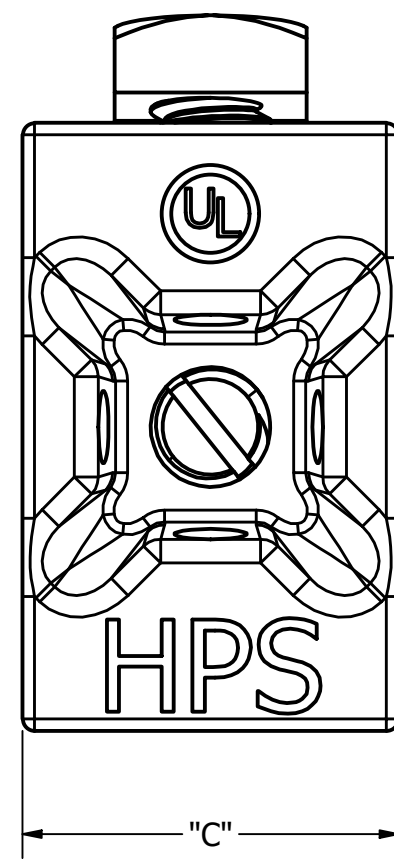
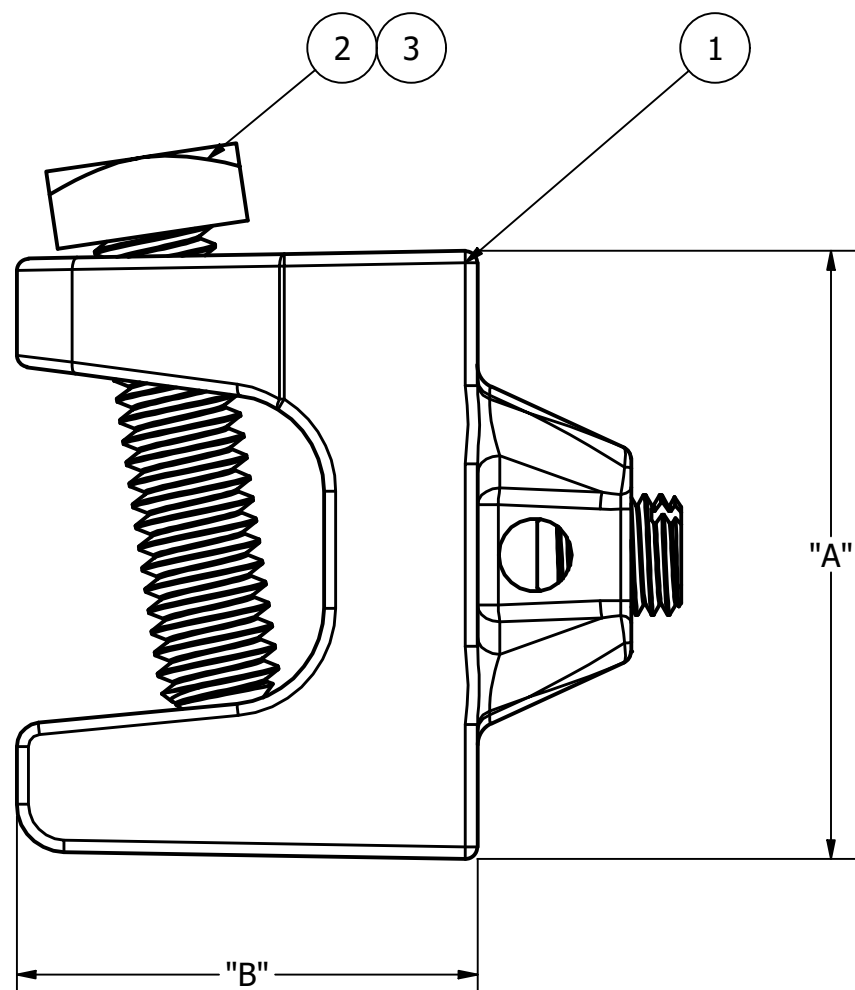
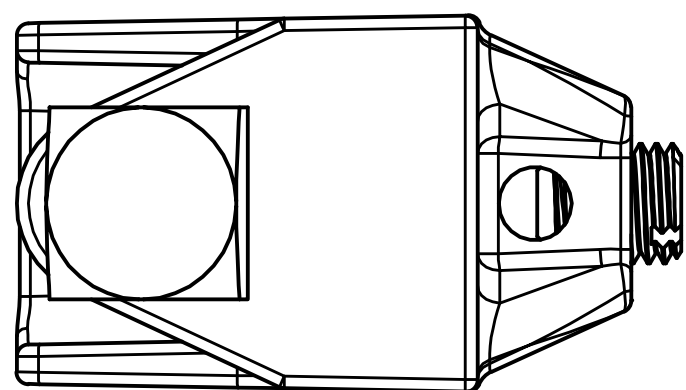



| CATALOG NUMBER | DESCRIPTION                        | DIM A            | DIM B            | DIM C            | APPROX. WT. EACH | STANDARD PACK |
|----------------|------------------------------------|------------------|------------------|------------------|------------------|---------------|
| BGC2181        | CLAMP, BEAM GROUNDING, SQUARE HEAD | 1.585<br>[40.26] | 1.200<br>[30.48] | 0.980<br>[24.89] | 0.285<br>[0.129] | 50            |
| BGC2181A       | CLAMP, BEAM GROUNDING, HEX HEAD    | 1.585<br>[40.26] | 1.200<br>[30.48] | 0.980<br>[24.89] | 0.280<br>[0.127] | 50            |

| ITEM | DESCRIPTION      | MATERIAL         |
|------|------------------|------------------|
| 1    | CASTING          | ALUMINUM BRONZE  |
| 2    | SQUARE HEAD BOLT | GALVANIZED STEEL |
| 3    | HEX HEAD BOLT    | GALVANIZED STEEL |



NOTES:

- ALL DIMENSIONS FOR REFERENCE ONLY. DISTANCE IN. [MM], FORCE LBS. [kN], TORQUE IN. LBS. [N.m], & WEIGHT LBS. [KG].
- RATINGS:
  - TORQUE RATING: 132 LBS.-IN.
- CERTIFICATIONS, SPECIFICATIONS, & STANDARDS:
  - UL CERTIFIED
- SUFFIXS & VARIANT CONFIGURATION:
  - N/A

|   |                     |                                    |                  |   |   |           |                     |                                    |
|---|---------------------|------------------------------------|------------------|---|---|-----------|---------------------|------------------------------------|
| 80713   | 12/03/19            | RG                                 | RG               | HPS.  |  <b>HUBBELL® POWER SYSTEMS</b><br><small>POWER SYSTEMS, INC.</small> |           |                     |                                    |
| EC #  | DATE                | CHG BY                             | RESP ENG         |   |   |           |                     |                                    |
| DESC OF DWG:<br>INITIAL RELEASE                 |                     |                                    |                  | CONFIDENTIAL: THIS DRAWING AND ITS CONTACTS ARE CONFIDENTIAL AND THE EXCLUSIVE PROPERTY OF HUBBELL POWER SYSTEMS. NO PUBLICATION, DISTRIBUTION OR COPIES MAY BE MADE WITHOUT THE WRITTEN CONSENT OF HUBBELL POWER SYSTEMS. HUBBELL POWER SYSTEMS UNPUBLISHED ALL RIGHTS RESERVED UNDER THE COPYRIGHT LAWS | TITLE<br>BGC2181/A,<br>BEAM GROUNDING CLAMP   |           |                     |                                    |
| REASON (S) FOR CHANGE:<br>DISPOSITION OF MAT'L: |                     |                                    |                  |   | <table border="1"> <tr> <td>SIZE<br/>C</td> <td>DWG NO.<br/>CC-26431</td> <td>CAT / PART / ASSY NO.<br/>SEE CHART</td> <td>REV<br/>00</td> </tr> </table> | SIZE<br>C | DWG NO.<br>CC-26431 | CAT / PART / ASSY NO.<br>SEE CHART |
| SIZE<br>C                                       | DWG NO.<br>CC-26431 | CAT / PART / ASSY NO.<br>SEE CHART | REV<br>00        |   |   |           |                     |                                    |
| DO NOT SCALE THIS DRAWING                       |                     | DRN BY<br>RG                       | DATE<br>12/03/19 | SHEET<br>1 OF 1   |   |           |                     |                                    |