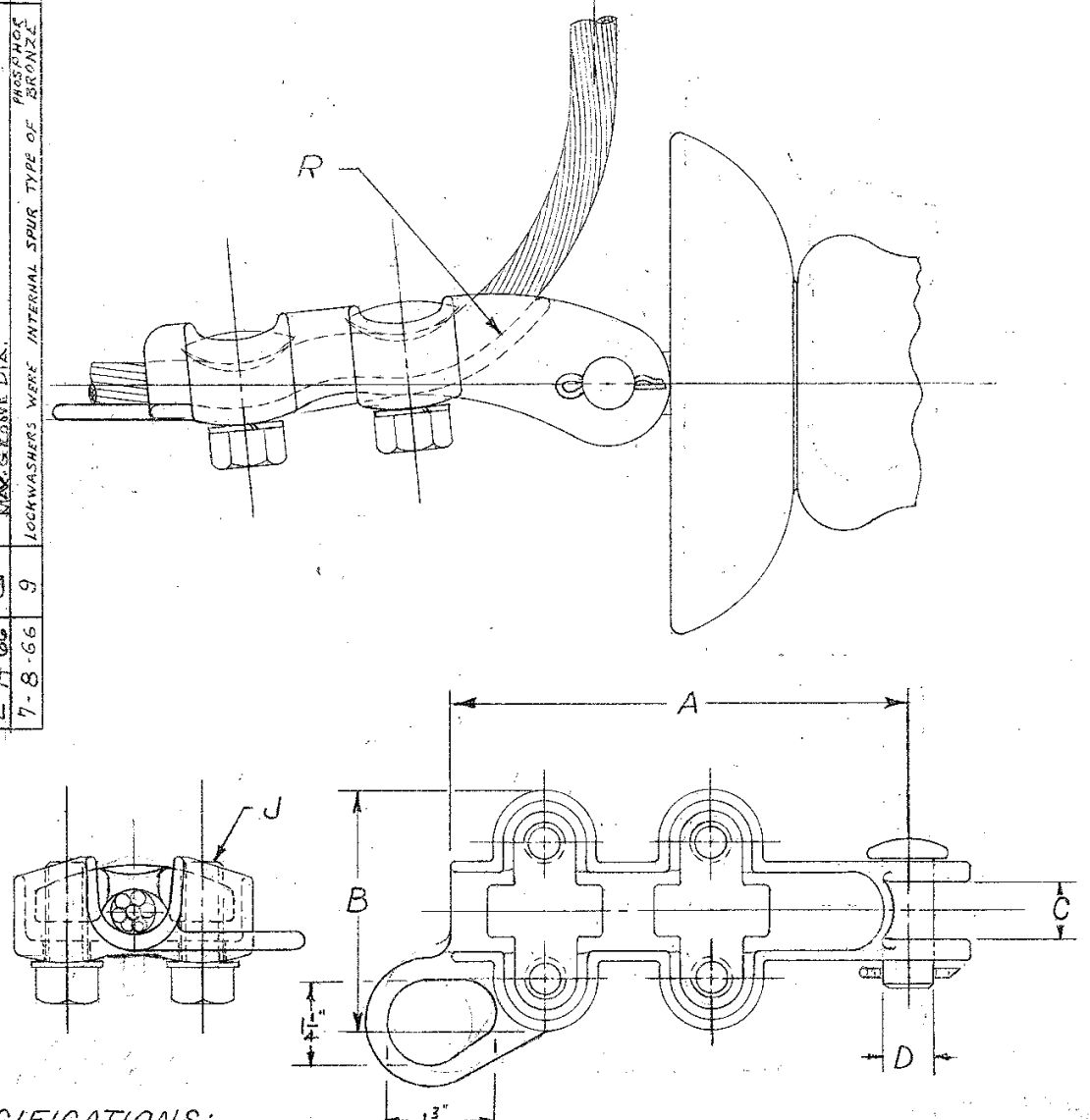


DATE	NO.	DESCRIPTION	BY
5-24-54	4	WASG. L.A. TABLE APPROVED BY STR. CH. 50.	J.M.S.
6-3-54	5	REPA. WKG. LOAD TABLE	J.M.S.
7-28-55	6	OSO B WAS 2 7/8, 100 B WAS 3/8. ADD EYE AS STD	J.M.S.
10-13-65	7	MATERIAL FOR WASHERS WAS SILICON BRZ	J.M.S.
2-14-66	8	KEEPER WAS ELECTRICAL BRONZE	J.M.S.
7-8-66	9	CABLE DIAM. GROOVE DIA. MIN. CHANGED TO MIN. CABLE DIA. + MAX. S. SAME DIA. LOCKWASHERS WERE INTERNAL SPIR. TYPE OF BRONZE	J.M.S.

R/10	5-27-68	RELOCATED SAGGING EYE	REM	2-16-74	R/12	EDIFIED DWG. 100 SERIES - C DIM WAS 1 1/2
R/11	8-14-79	A" DIM WAS 5 1/2 ON BSG-050 & 6 1/2 ON BSG-100	WI			



SPECIFICATIONS:
 CLAMP - BODY & KEEPER - ALUMINUM BRONZE
 BOLTS & LOCKWASHERS - SILICON BRONZE

ER. HA-717

DATE	NO.	DESCRIPTION	BY	CO.	CATALOG NUMBER	TYPE OF FITTING	COPPER CABLE	MIN. CABLE DIA.	MAX. CABLE DIA.	DIMENSIONS IN INCHES					ULT. STRENGTH LBS.		
										A	B	C	D	J	RADII	BODY	SAGGING EYE
8-3-53	1	REDRAWN & REVISED		C.O.	BSG-050-S	SOCKET	1/6 STR-500 MCM	.36	.875	6 1/2	2 27/32	1/16	5/8	1/2	4	5,500	5,500
3-23-54	2	REVISED DRAWING		C.O.	BSG-050-N	NONE											
5-12-54	3	REVISED STRENGTH DATA		C.O.	BSG-100-S	SOCKET	500-1000 MCM	.81	1.25	7 1/2	3 5/32	1/16	5/8	1/2	6	7,500	7,500
					BSG-100-C	CLEVIS											
					BSG-100-N	NONE											

DATE	8-13-52
DWN BY	CO
CKD BY	
APPROVED	N.
SCALE	

BRONZE STRAIN CLAMP
 TYPE - BSG

R-6 R/11	ANDERSON BRASS WORKS, INC.
BIRMINGHAM.	ALABAMA
CAT. NO.	BSG TAB
DWG. NO.	C-2791