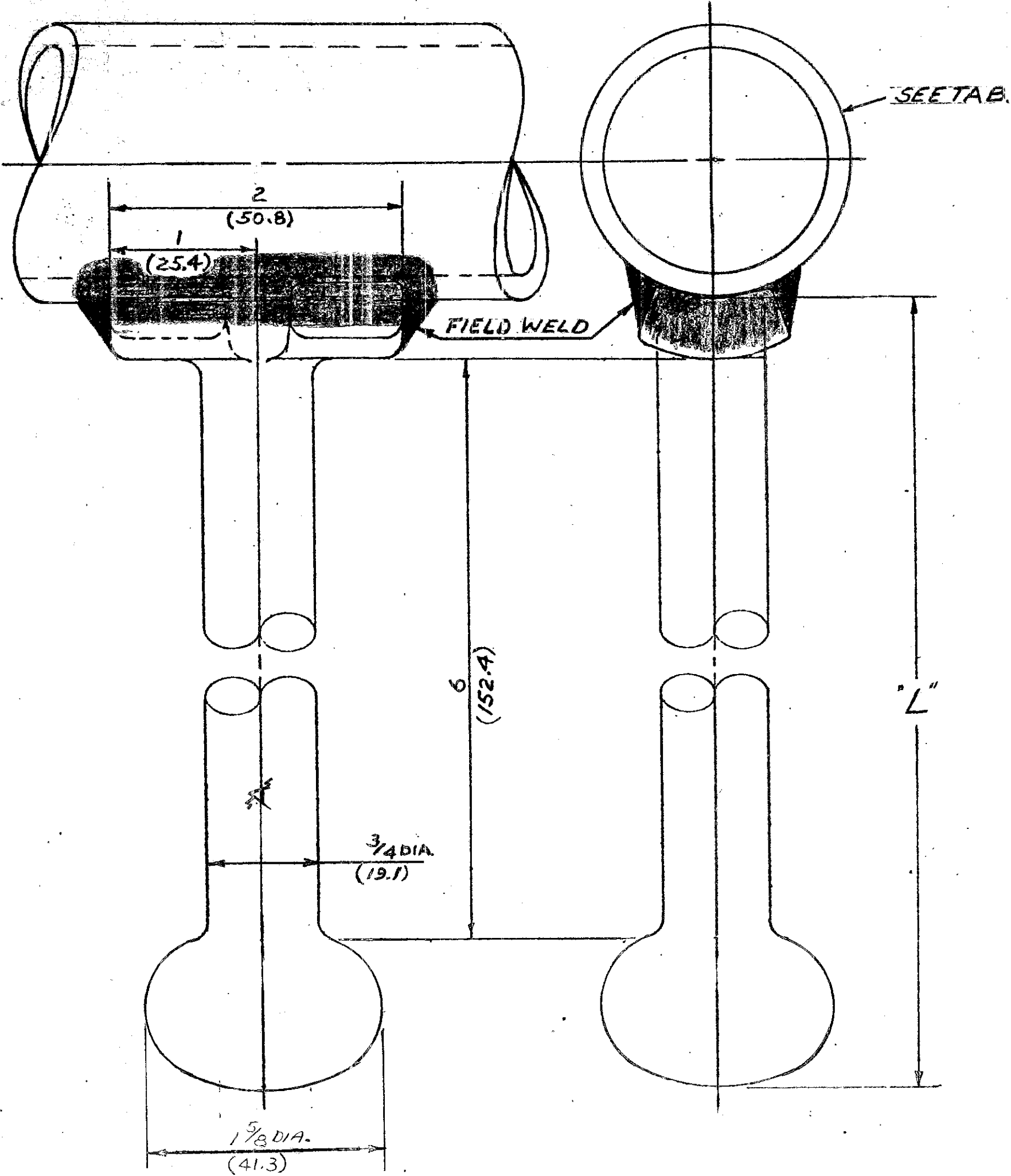


DATE	DESCRIPTION
2-20-78	1 ADDED NOTE 2 & METRICS TO TAB. E.L.
7-9-80	2 REV. BALL END & L DIM.
	J.S.



NOTE:
 1. CASTING - 356 T6 ALUM. ALLOY
 2. DIMENSIONS IN INCHES / (MILLIMETERS)

CAT. NO.	IPS RANGE	"L"
WTESR-10-24	1" IPS THRU. 2 1/2"	7 1/2 (191)
WTESR-30-60	3" IPS THRU. 6"	7 5/8 (193)

PROJ. K1

R10 1/2	
ANDERSON ELECTRICAL CONNECTORS SQUARE D COMPANY LEEDS ALABAMA	
CAT. NO. WTESR-SEE TAB.	DWG. NO. C-11397

DATE 1-27-78
 DRAWN BY J.S. CKD BY RH
 APPROVED HEL
 SCALE DO NOT.

WELDED GROUNDING STUD
 FOR 3" IPS. THROUGH 6" IPS.
 AND 1" IPS. THROUGH 2 1/2" IPS.