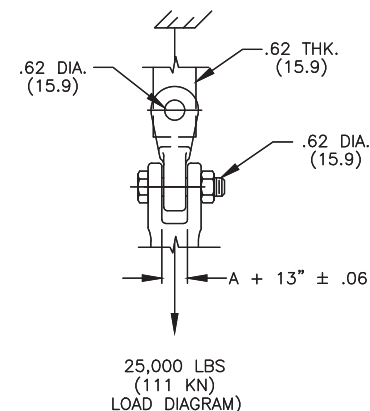
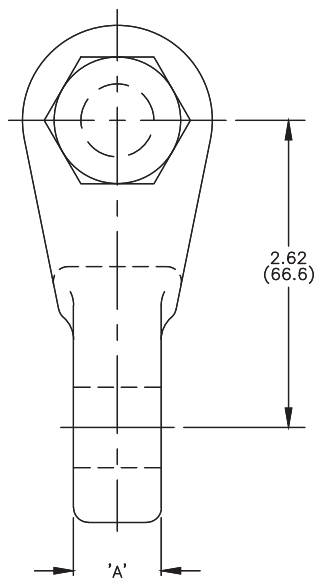
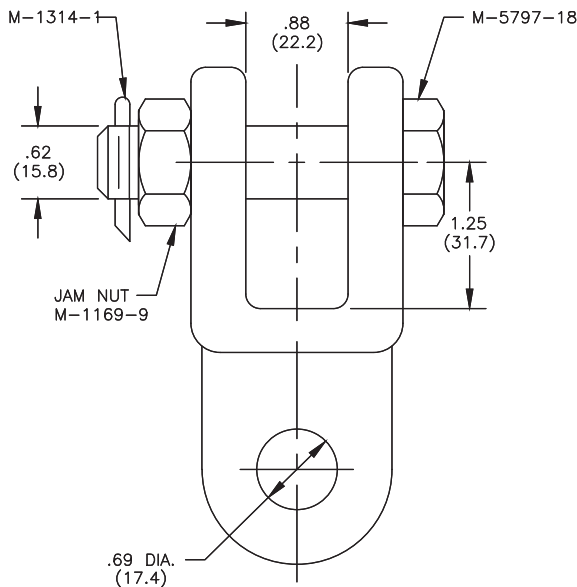
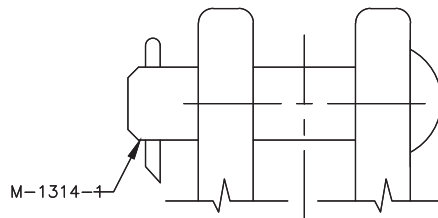


4 | 3 | 2 | 1

CAT. NO.	'A' DIM	'B' ULT. STR.	REMARKS
CE-025-04	.50 (12.7)	20,000 (9,072)	WITH CLEVIS PIN & COTTER PIN
CE-025-04-BNK	.50 (12.7)	20,000 (9,072)	WITH BOLT, NUT & COTTER PIN
CE-025-06	.75 (19.1)	25,000 (11,340)	WITH CLEVIS PIN & COTTER PIN
CE-025-13	1.38 (34.9)	25,000 (11,340)	WITH CLEVIS PIN & COTTER PIN



NOTES:

1. MATERIAL - 654512 GALV. DUCT. IRON
2. BOLT AND JAM NUT - GALV. STEEL.
3. COTTER PIN - STAINLESS STEEL
4. GALVANIZING PER ASTM A153.

200521110344	05/14/2020	DL	DL	PTB
EC #	DATE	CHG BY	CKD BY	APPD BY
DESC OF DWG: CONSOLIDATED DWG IN NEW TEMPLATE				
REASON (S) FOR CHANGE: --				
DISPOSITION OF MAT'L: --				

TOLERANCE CHART
UNLESS OTHERWISE SPECIFIED

0.0 ± 0.030 ANGLES ± 1°
0.00 ± 0.015 DO NOT USE
0.000 ± 0.010 FRACTIONS

THIRD ANGLE PROJECTION

CONFIDENTIAL: THIS DRAWING AND ITS CONTENTS ARE CONFIDENTIAL AND ITS EXCLUSIVE PROPERTY OF HUBBELL POWER SYSTEMS. NO PUBLICATION, DISTRIBUTION, OR COPIES MAY BE MADE WITHOUT THE WRITTEN CONSENT OF HUBBELL POWER SYSTEMS. HUBBELL POWER SYSTEMS UNPUBLISHED ALL RIGHTS RESERVED UNDER THE COPYRIGHT LAWS.

HUBBELL® POWER SYSTEMS

TITLE: CLEVIS EYE 90 DEGREES

CATALOG NUMBER: CE-025-SEE TABLE

SIZE	DWG NO.	PART / ASSY NO.	REV
B	C-11403	SEE TABLE	07

SCALE: NS | DRN BY: BJD | DATE: 11/01/2000 | SHEET 1 OF 2

WI-ENG-105-031319-RO | 4 | 3 | 2 | UNCONTROLLED COPY WHEN PRINTED 1