

FIG. NO.	CATALOG NUMBER	CU CONDUCTOR RANGE MAIN (MIN. - MAX.)	CU CONDUCTOR RANGE TAP (MIN. - MAX.)	DIM A	DIM B	DIM C	HARDWARE	APPROX. WT. EACH LB. [KG]	STANDARD PACK
1	K1	#4 STR.—1/0 STR.	#8 SOL.—1/0 STR.	.938 [23.81]	1.313 [33.34]	1.313 [33.34]	5/16"	.125 [.06]	25
1	K2	#3 STR.—2/0 STR.	#8 SOL.—2/0 STR.	1.063 [26.99]	1.625 [41.28]	1.656 [42.07]	3/8"	.29 [.13]	25
1	K3	#1 STR.—4/0 STR.	#8 SOL.—4/0 STR.	1.125 [28.58]	1.750 [44.45]	1.938 [49.21]	3/8"	.40 [.18]	25
1	K41	2/0 STR.—350 MCM	#8 SOL.—350 MCM	1.375 [34.93]	2.125 [53.98]	2.375 [60.33]	1/2"	.655 [.30]	10
1	K5	3/0 STR.—500 MCM	#8 SOL.—500 MCM	1.500 [38.10]	2.250 [57.15]	2.688 [68.26]	1/2"	.80 [.36]	10
1	K6	350—800 MCM	#8 SOL.—800 MCM	1.625 [41.28]	2.500 [63.50]	3.188 [80.96]	1/2"	1.00 [.45]	10
1	K7	500—1000 MCM	#8 SOL.—1000 MCM	2 [50.80]	3 [76.70]	3.688 [93.66]	5/8"	2.13 [.97]	5
2	KR1	#4 STR.—1/0 STR.	#8 SOL.—1/0 STR.	.938 [23.81]	1.313 [33.34]	1.500 [38.10]	5/16"	.18 [.08]	25
2	KR2	#3 STR.—2/0 STR.	#6 SOL.—2/0 STR.	1.063 [26.99]	1.625 [41.28]	1.781 [45.24]	3/8"	.35 [.16]	25
2	KR3	#1 STR.—4/0 STR.	#6 SOL.—4/0 STR.	1.125 [28.58]	1.750 [44.45]	2.125 [53.98]	3/8"	.43 [.19]	25
2	KR4	2/0 STR.—350 MCM	#4 SOL.—350 MCM	1.375 [34.93]	2.125 [53.98]	2.563 [65.09]	1/2"	.78 [.35]	10
2	KR5	3/0 STR.—500 MCM	#4 SOL.—500 MCM	1.500 [38.10]	2.250 [57.15]	2.938 [74.61]	1/2"	.86 [.39]	10
2	KR6	350—800 MCM	#2 STR.—800 MCM	1.625 [41.28]	2.500 [63.50]	3.438 [87.31]	1/2"	1.25 [.57]	10
2	KR7	450—1000 MCM	1/0 STR.—1000 MCM	2 [50.80]	3 [76.70]	4 [101.60]	5/8"	2.45 [1.11]	5

ITEM	DESCRIPTION	MATERIAL
1	BODY	BRONZE
2	CAP	BRONZE
3	SEPERATOR	BRONZE
4	RETAINING RING	NEOPRENE RUBBER
5	HARDWARE	BRONZE

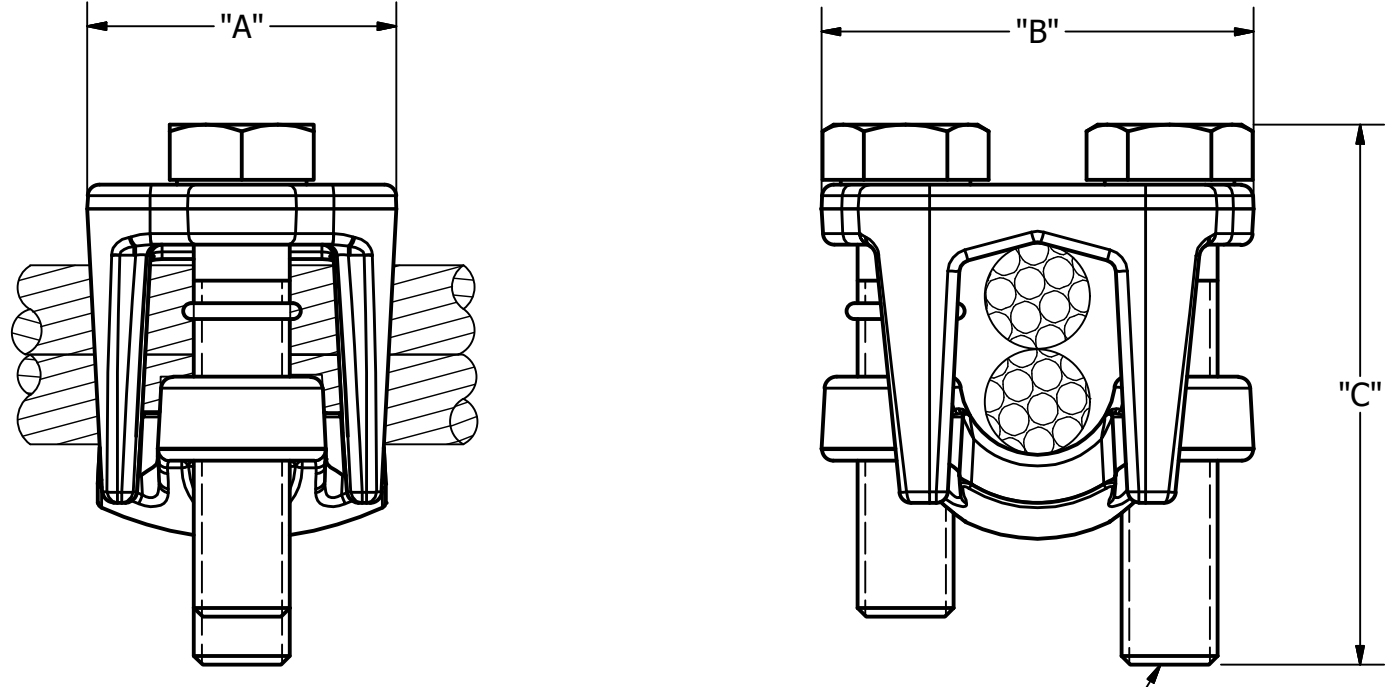


FIG 1

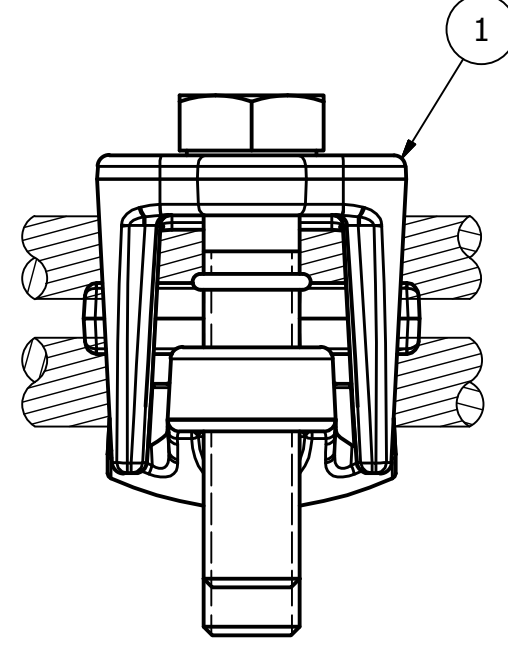
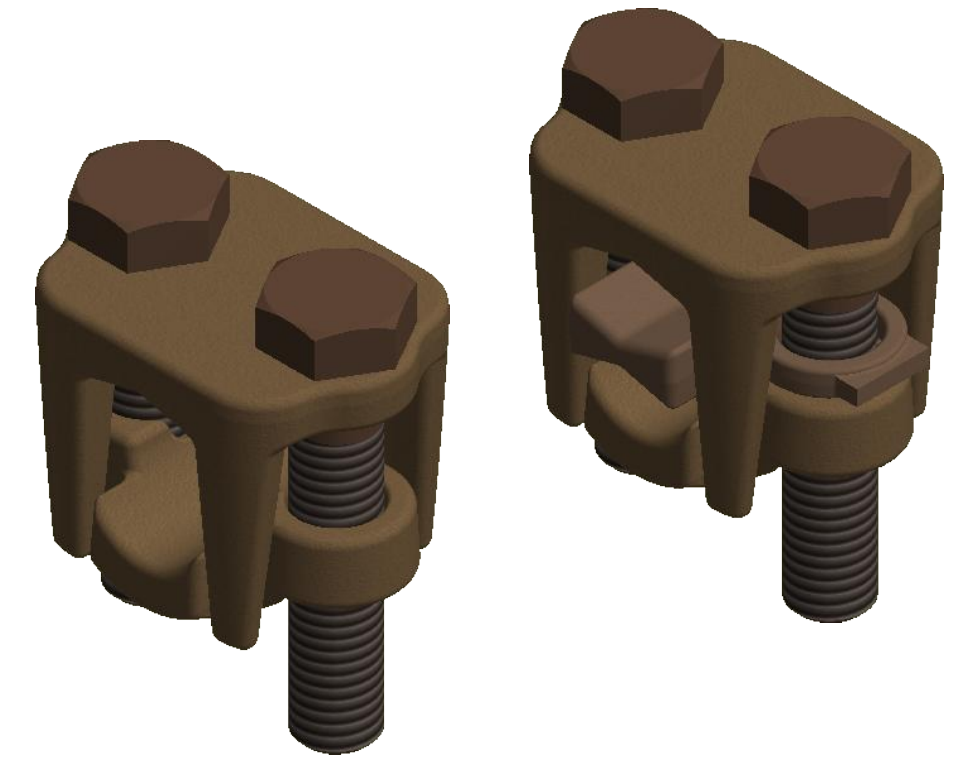
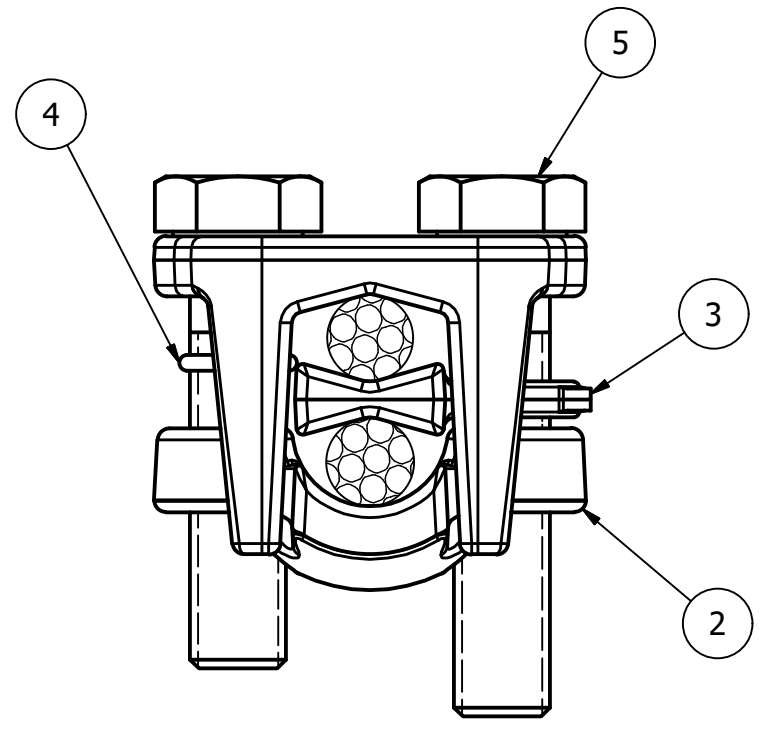


FIG 2



- NOTES:
- ALL DIMENSIONS FOR REFERENCE ONLY IN. [MM], FORCE LBS [KN], TORQUE IN. LBS [N.M] & WEIGHT LBS. [KG].
 - RATINGS:
 - RECOMMENDED TORQUE: 5/16 HARDWARE - 180 IN.LBS [20.34]
3/8 HARDWARE - 240 IN.LBS [27.12]
1/2 HARDWARE - 480 IN.LBS [54.23]
5/8 HARDWARE - 660 IN.LBS [74.57]
 - CERTIFICATIONS, SPECIFICATIONS & STANDARDS:
 - ANSI C119.4
 - A SUFFIX IS ADDED TO THE CATALOG NUMBER TO DESIGNATE THE REQUIRED FITTINGS AS SHOWN IN THE TABULATION (EXAMPLE: KR5TP):
"TP" - TIN PLATING AVAILABLE ON KR VERSIONS ONLY

77167	1/24/2019	MM	SD	HPS.	
EC #	DATE	CHG BY	RESP ENG		
DESC OF DWG: DRAWING CREATED IN INVENTOR				CONFIDENTIAL: THIS DRAWING AND ITS CONTACTS ARE CONFIDENTIAL AND THE EXCLUSIVE PROPERTY OF HUBBELL POWER SYSTEMS. NO PUBLICATION, DISTRIBUTION OR COPIES MAY BE MADE WITHOUT THE WRITTEN CONSENT OF HUBBELL POWER SYSTEMS. HUBBELL POWER SYSTEMS UNPUBLISHED ALL RIGHTS RESERVED UNDER THE COPYRIGHT LAWS	
REASON (S) FOR CHANGE: DISPOSITION OF MAT'L:				TITLE CONNECTOR PARALLEL GROOVE, TYPE K & KR	
SIZE C		DWG NO. C-1363		CAT / PART / ASSY NO. SEE CHART	
DO NOT SCALE THIS DRAWING		DRN BY MB	DATE 07-24-50	SHEET 1 OF 1	REV 13