

FIG. NO.	CATALOG NUMBER	AAC CONDUCTOR RANGE MAIN (MIN. - MAX.)	ACSR CONDUCTOR RANGE MAIN (MIN. - MAX.)	CU CONDUCTOR RANGE TAP (MIN. - MAX.)	DIM A	DIM B	DIM C	HARDWARE	APPROX. WT. EACH LB. [KG]	STANDARD PACK
1	LC511AXB*	#6 - 1/0	#8 - 1/0	#8 SOL. - #2 STR.	1.12 [28.58]	1.31 [33.34]	1.50 [38.10]	5/16"	.140 [.06]	25
1	LC522AXB*	#6 - 1/0	#8 - 1/0	#8 SOL. - 1/0 STR.	1.37 [34.93]	1.65 [42.07]	2.00 [50.80]	3/8"	.220 [.10]	25
1	LC542XB	#6 - 1/0	#8 - 1/0	1/0 STR. - 4/0 STR.	1.18 [30.16]	1.78 [45.24]	2.00 [50.80]	3/8"	.240 [.11]	25
1	LC811AXB*	#1 - 400 MCM	#1 - 336.4 MCM	#8 SOL. - 1/0 STR.	1.25 [31.75]	2.03 [51.59]	2.25 [57.15]	3/8"	.290 [.13]	25
2	LC822XB	#1 - 400 MCM	#1 - 336.4 MCM	#8 SOL. - 2/0 STR.	2.250 [57.15]	2.21 [56.36]	2.50 [63.50]	1/2"	.460 [.21]	25
2	LC833XB*	397.5 MCM - 954 MCM	336.4 MCM - 795 MCM	#8 SOL. - 2/0 STR.	2.50 [63.50]	2.53 [64.29]	2.75 [69.85]	1/2"	.540 [.24]	25

ITEM	DESCRIPTION	MATERIAL
1	TOP	ALUMINUM
2	BOTTOM	ALUMINUM
3	BOLT	GALVANIZED STEEL
4	WASHER	GALVANIZED STEEL
5	NUT	GALVANIZED STEEL

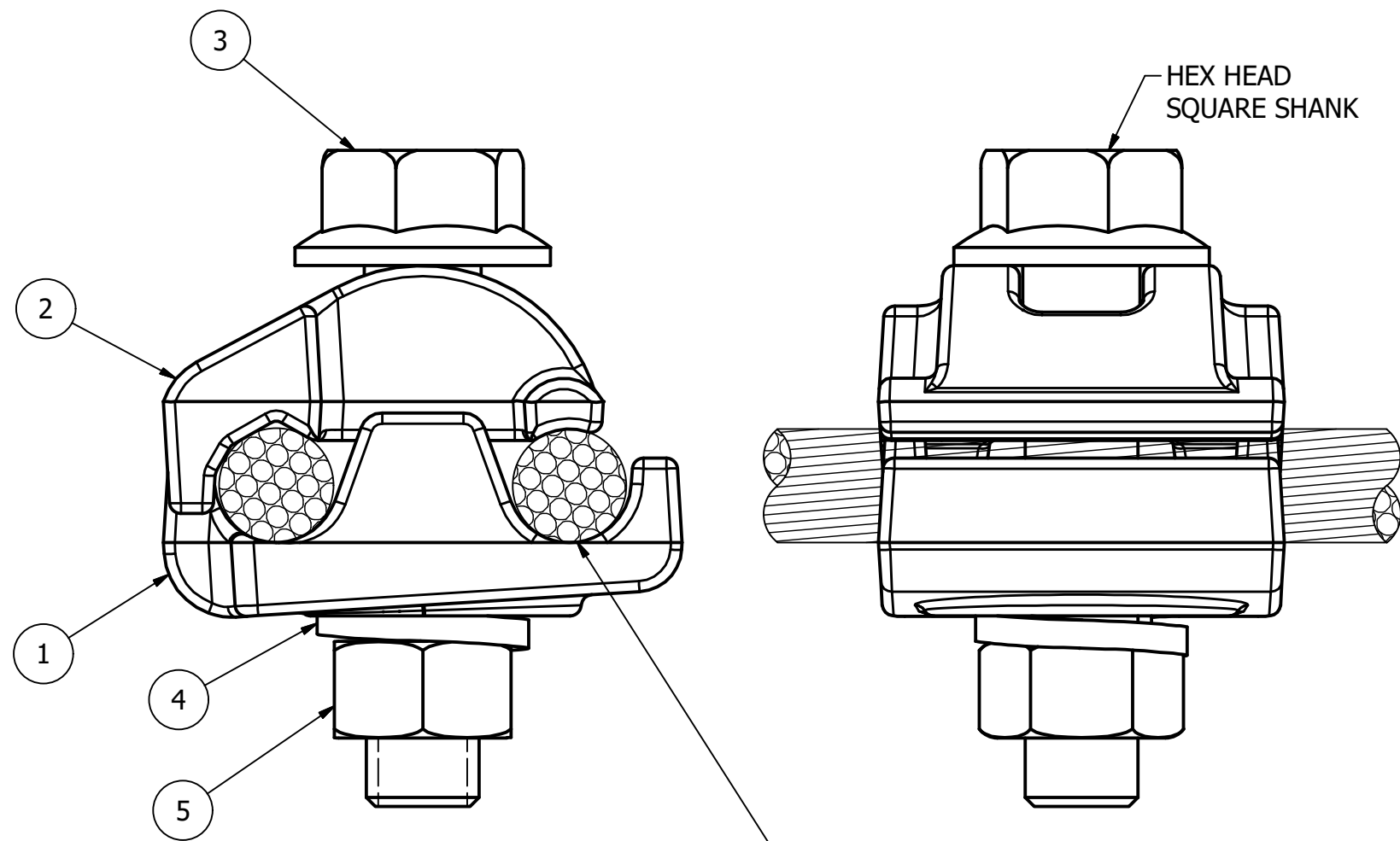


FIG 1 COPPER LINING IN TAP GROOVE ON TOP AND BOTTOM CASTING

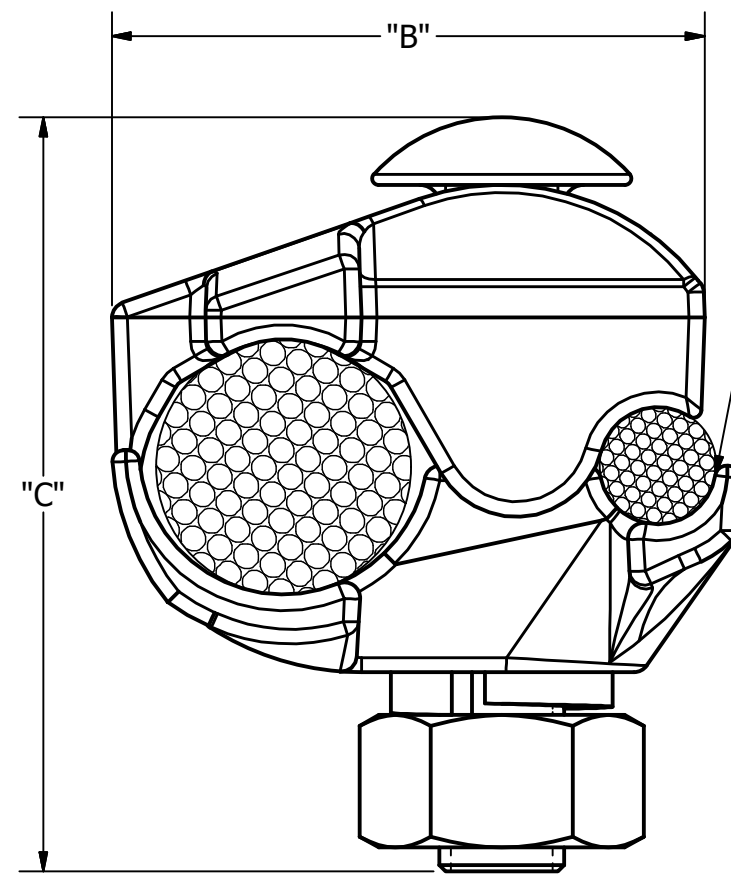
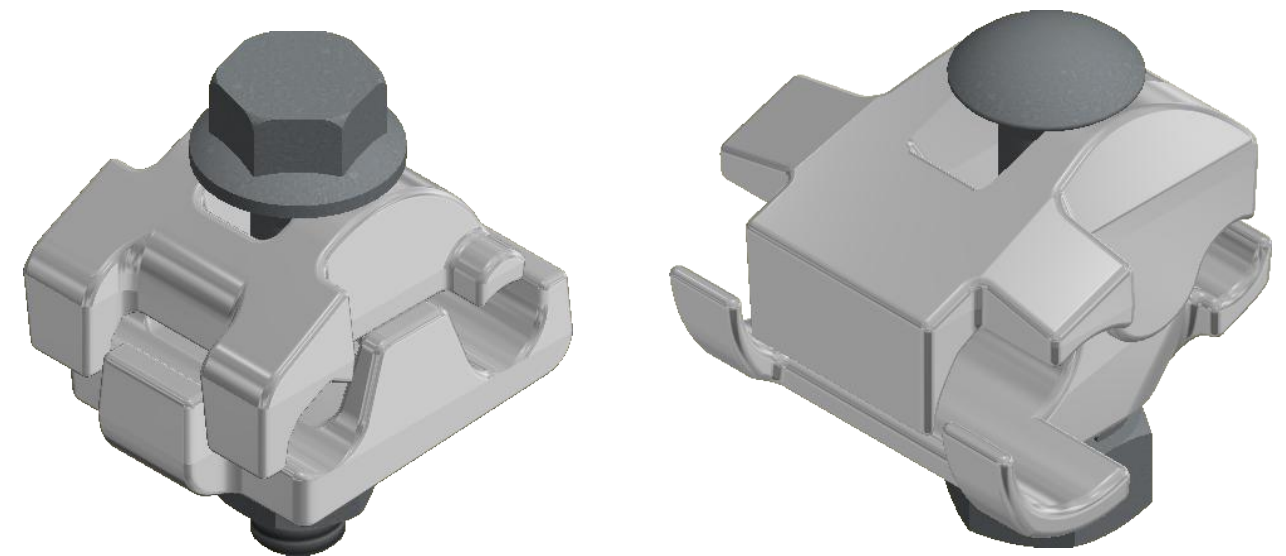


FIG 2



NOTES:

- ALL DIMENSIONS FOR REFERENCE ONLY IN. [MM], FORCE LBS [KN], TORQUE IN. LBS [N.M] & WEIGHT LBS. [KG].
- RATINGS:
 - A. RECOMMENDED TORQUE: 5/16 HARDWARE - 180 IN.LBS [20.34]
 - 3/8 HARDWARE - 240 IN.LBS [27.12]
 - 1/2 HARDWARE - 480 IN.LBS [54.23]
- CERTIFICATIONS, SPECIFICATIONS & STANDARDS:
 - A. *RUS LISTED.
 - B. ANSI C119.4
- A SUFFIX IS ADDED TO THE CATALOG NUMBER TO DESIGNATE THE REQUIRED FITTINGS AS SHOWN IN THE TABULATION (EXAMPLE: LC522AXB):
 - "XB" - FACTORY INHIBITED AND BAGGED

77167	1/24/2019	SD	SD	HPS.			
EC #	DATE	CHG BY	RESP ENG				
DESC OF DWG: DRAWING CREATED IN INVENTOR				CONFIDENTIAL: THIS DRAWING AND ITS CONTACTS ARE CONFIDENTIAL AND THE EXCLUSIVE PROPERTY OF HUBBELL POWER SYSTEMS. NO PUBLICATION, DISTRIBUTION OR COPIES MAY BE MADE WITHOUT THE WRITTEN CONSENT OF HUBBELL POWER SYSTEMS. HUBBELL POWER SYSTEMS UNPUBLISHED ALL RIGHTS RESERVED UNDER THE COPYRIGHT LAWS	HUBBELL® POWER SYSTEMS TITLE CONNECTOR PARALLEL, GROOVE TYPE LC5XX & LC8XX, AL/CU		
REASON (S) FOR CHANGE: DISPOSITION OF MAT'L:					SIZE C	DWG NO. C-1472	CAT / PART / ASSY NO. SEE CHART
				DO NOT SCALE THIS DRAWING	DRN BY CW	DATE 07/01/1957	SHEET 1 OF 1