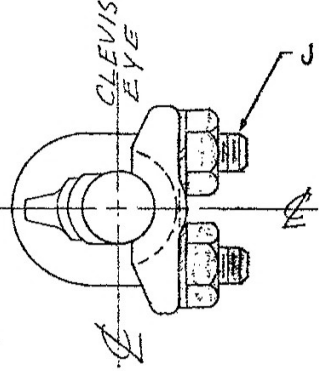
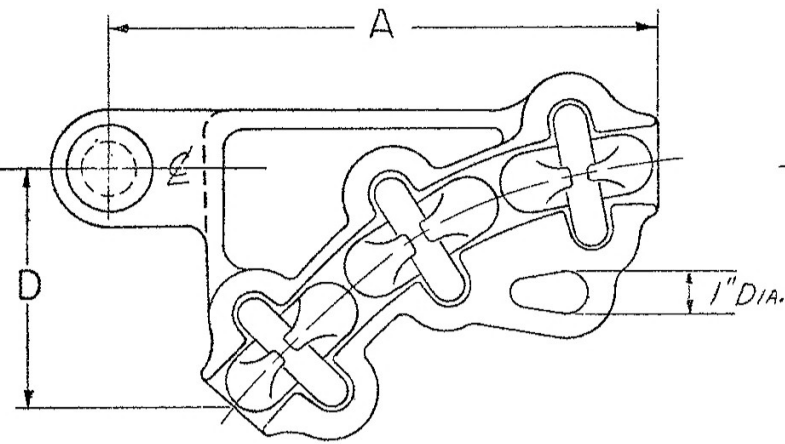
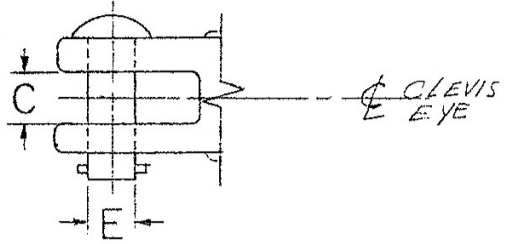


DATE	NO.	DESCRIPTION	BY
7-21-57	5	ADD 250"	
10-21-57	3	DRILLED PAL NUT; Added L/W	
4-23-58	4	CORR. TAB. DIM'S. TO AGREE WITH PATTERNS.	
8-16-57	1	MADE "I" IN TAB. AGREE WITH "I" IN NOTE.	
8-20-57	2	CORR. AND. NOTE; Added "I" DIM. WDS	

DATE	NO.	DESCRIPTION	BY
6-15-65	10	ARI-150 GALV. HDW. - 1.192 WAS 1.191 - 10 1/4 WAS 10 1/8	S.D.P.
2-16-66	11	MIN. & MAX. CABLE DIA WAS COND. CABLE BRIDGE, MIN & MAX	DET

DATE	NO.	DESCRIPTION	BY
2-6-69	12	REVISED ALUM. HDW. NOTE 1-A	S.D.P.
5-24-77	13	CH. CLAMPING HDW. FR. AL. T.B.E/S & S.I.C. DR. T.B. S/S ICE-767/770	E.L.
3-24-83	14	LOCKWASHER WAS HOT DIP GALV. 100-3558	ALAN
2-24-87	15	ARI-250 : "D" WAS 6 1/16	WI



- NOTES**
- I MATERIAL:**
- A. FOR ARI.
 1. CLAMP AND RIDERS - 356T6 ALUMINUM ALLOY.
 2. U-BOLTS - GALVANIZED STEEL
 3. NUTS - GALVANIZED STEEL
 4. LOCKWASHER - MAY BE MECHANICAL PLATED OR HOT DIP GALV. STEEL
 5. MTG. HARDWARE - GLEVIS PIN - GALV. STEEL; COTT PIN - STAINLESS 5
 - B. FOR BR1.
 1. CLAMP AND RIDERS - HIGH STRENGTH BRONZE.
 2. CLAMPING HARDWARE - GALVANIZED STEEL
 3. MTG. HARDWARE - GLEVIS PIN - GALV. STEEL; COTT PIN - STAINLESS STEEL

CATALOG NUMBERS		MIN. CABLE DIA.	MAX. CABLE DIA.	ULTIMATE CLAMP STRENGTH (MIN.)	DIMENSIONS IN INCHES				
BRONZE	ALUMINUM				A	C	D	E	J
BRI-025-N	ARI-025-N	.365 - .574	8,000	8 1/16	15/16	3 5/32	5/8	3/8	
BRI-050-N	ARI-050-N	.574 - .813	10,000	8 7/8	15/16	3 3/8	5/8	1/2	
BRI-100-N	ARI-100-N	.811 - 1.152	15,000	9 1/8	15/16	3 7/8	5/8	1/2	
BRI-150-N	ARI-150-N	1.150 - 1.412	15,000	10 1/2	15/16	4 3/8	5/8	5/8	
BRI-200-N	ARI-200-N	1.411 - 1.630	15,000	12 3/4	15/16	5	5/8	5/8	
BRI-250-N	ARI-250-N	1.632 - 1.824	15,000	13 3/4	15/16	5 1/16	5/8	5/8	

DATE 7-26-57
 OWN BY WDS CKD BY
 APPROVED KS
 SCALE

STRAIN CLAMP

ANDERSON ELECTRIC CORP.
 BIRMINGHAM ALABAMA

CAT. NO. DWG. NO. **C-1493**