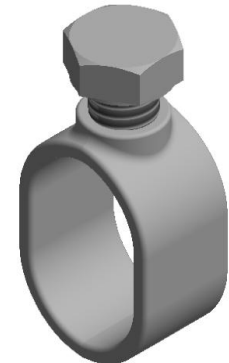
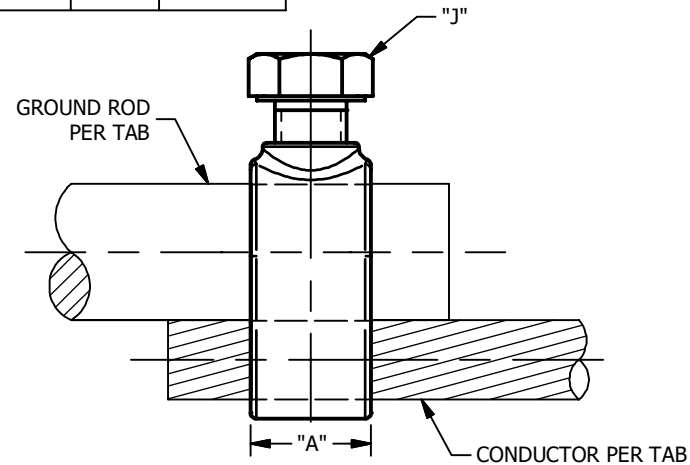
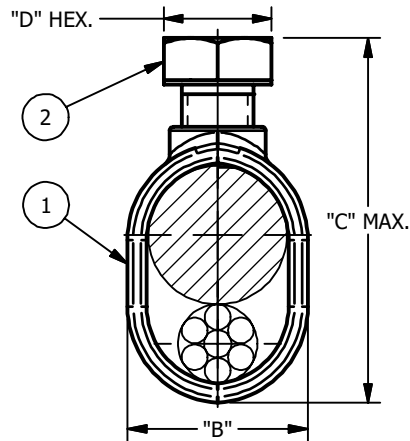


CATALOG NUMBER	GROUND ROD	CABLE RANGE ( MIN. - MAX.)	A	B	C	D	J THD.	APPROX SHIP WT. LBS/C
GC5/R-22	5/8 [15.88] ROLL THD. STOCK	10 SOL - 2 STR	0.625 [15.88]	0.938 [23.81]	1.938 [49.22]	0.500 [12.70]	3/8 [9.53]	8.8
GC5/G5	5/8 [15.88] ROLL THD. STOCK	10 SOL - 2 STR	0.625 [15.88]	0.938 [23.81]	1.938 [49.22]	0.500 [12.70]	3/8 [9.53]	8.8

ITEM	DESCRIPTION	MATERIAL
1	BODY	ALUMINUM BRONZE
2	BOLT	SILICONE BRONZE OR STAINLESS STEEL



NOTES:

1. ALL DIMENSIONS ARE FOR REFERENCE ONLY. DISTANCE IN. [MM], FORCE: LBS-Force [kN], TORQUE IN. LBS. [N.m], & WEIGHT LBS. [KG].
2. RATINGS:  
A. N/A.
3. CERTIFICATIONS, SPECIFICATIONS & STANDARDS:  
A. \*RUS LISTED.
4. GROUND CLAMPS ARE UL LISTED AND ACCEPTABLE FOR BURIAL IN EARTH OR EMBEDMENT IN CONCRETE.
5. ULTIMATE TORQUE STRENGTH: 200 LBS. IN.

230718031972	7/18/23	BM	SI	SP
EC #	DATE	CHANGED BY	CHECKED BY	APPROVED BY
DESCRIPTION: REDRAWN IN INVENTOR -- -- -- --				WEIGHT, LBS
				N/A
ADDITIONAL COMMENTS: --				THIRD ANGLE PROJECTION
				CONFIDENTIAL: THIS DRAWING AND ITS CONTENTS ARE CONFIDENTIAL AND THE EXCLUSIVE PROPERTY OF HUBBELL POWER SYSTEMS. NO PUBLICATION, DISTRIBUTION OR COPIES MAY BE MADE WITHOUT THE WRITTEN CONSENT OF HUBBELL POWER SYSTEMS. HUBBELL POWER SYSTEMS UNPUBLISHED ALL RIGHTS RESERVED UNDER THE COPYRIGHT LAWS

<b>HUBBELL POWER SYSTEMS, Inc.</b> <small>POWER SYSTEMS, Inc.</small>			
<b>GROUND CLAMP</b> <b>GROUND ROD TO COPPER CONDUCTOR ( PARALLEL)</b>			
CATALOG NUMBER: <b>SEE TABLE</b>			
SIZE <b>A</b>	DWG NO. <b>C-15102</b>	PART / ASSY NO. <b>SEE TABLE</b>	REV <b>6</b>
SCALE: <b>1 : 1</b>	DRN BY: <b>DR</b>	DATE: <b>04/19/93</b>	SHEET <b>1</b> OF <b>1</b>