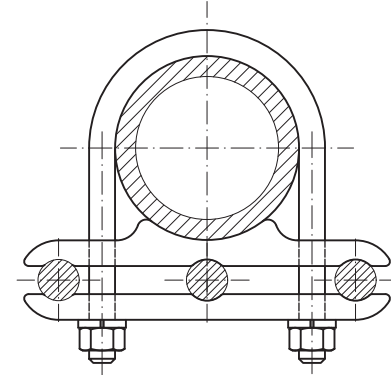
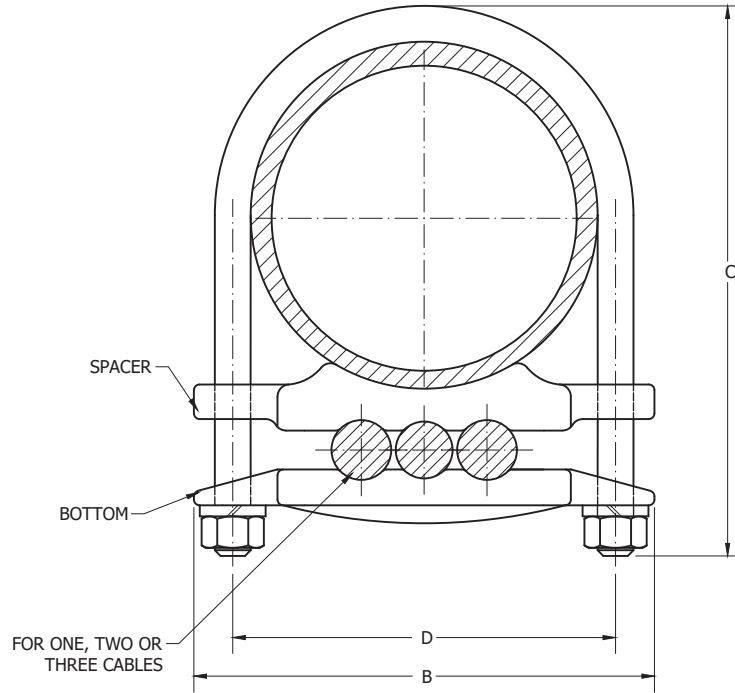
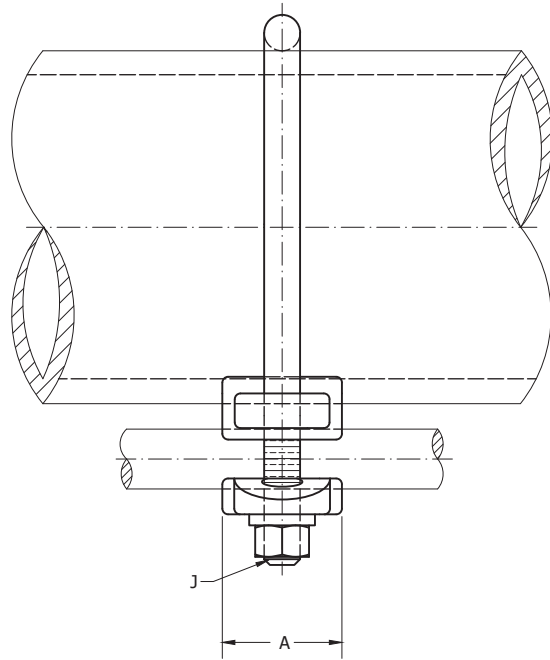


ACCESS
3D PDF
CLICK HERE

ACCESS
3D PORTAL
CLICK HERE



NOTES:

- 1. MATERIAL: SPACER & BOTTOM-255 ALLOY ELECTRICAL BRONZE
U-BOLTS, NUTS & WASHERS - SILICON BRONZE
- 2. SEE C-2951 FOR SINGLE CABLE CLAMPS.
- 3. TO OBTAIN CONNECTOR FOR ALUMINUM TUBULAR BUS, ADD PREFIX "A" TO CATALOG NUMBER (i.e. AGC-110-21B)
MATERIAL: SPACER-356T6 ALUMINUM ALLOY, TIN PLATED
BOTTOM - 255 ALLOY ELECTRICAL BRONZE, TIN PLATED & FLOWED
U-BOLT- 2024 - T4 ALUMINUM ALLOY
WASHERS - 7075- T6 ALUMINUM ALLOY
NUTS-6061T6-ALUMINUM WAXED
- 4. * - INDICATES ITEMS THAT ARE OPTIONAL DESIGN
- 5. TO OBTAIN A TIN PLATED CONNECTOR ADD "TP" TO END OF THE CATALOG NUMBER. EX) GC110122CTP

201014001443	10/14/2020	HG	HG	PTB
EC #	DATE	CHG BY	CKD BY	APPD BY
DESC OF DWG: INTERACTIVE CUSTOMER DRAWING				
REASON (S) FOR CHANGE: --				
DISPOSITION OF MATERIAL: --				

THIRD ANGLE PROJECTION

CONFIDENTIAL: THIS DRAWING AND ITS CONTENTS ARE CONFIDENTIAL AND THE EXCLUSIVE PROPERTY OF HUBBELL POWER SYSTEMS. NO PUBLICATION, DISTRIBUTION, OR COPIES MAY BE MADE WITHOUT THE WRITTEN CONSENT OF HUBBELL POWER SYSTEMS. HUBBELL POWER SYSTEMS UNPUBLISHED ALL RIGHTS RESERVED UNDER THE COPYRIGHT LAWS.

HUBBELL POWER SYSTEMS, Inc.

TITLE
GROUND CLAMP COPPER ALLOY
3 CABLES TO TUBE/ROD

CATALOG NUMBER: GC110 FAMILY

SIZE	DWG NO.	PART / ASSY NO.	REV
C	C-2336	--	19

SCALE: NS DRN BY: KS DATE: 11/4/1954 SHEET 1 OF 3

CATALOG NUMBER	ROD OR TUBE (O.D.)	PIPE IPS	CABLE RAGE MIN. - MAX.	DIMENSIONS IN INCHES				
				A	B	C	D	J
GC-110-21B	3/4"	1/2"	#4 - 2/0	1	2 3/8	2 7/8	1 1/2	3/8
GC-110-21C								
GC-110-21D	* 3/4"	1/2"	#4 - 2/0	1 1/8	3 5/16	2 7/8	1 3/8	3/8
GC-110-22B								
GC-110-22C								
GC-110-22D	* 3/4"	1/2"	2/0 - 250	1 1/8	3 1/16	3	1 5/16	3/8
GC-110-23D	3/4"	1/2"	250 - 500	1 1/2	4	3 1/4	1 3/8	3/8
GC-110-31B	1"	3/4"	#4 - 2/0			2 7/8	1 1/2	3/8
GC-110-31C								
GC-110-31D	* 1"	3/4"	#4 - 2/0	1 1/8	3 1/4	3 1/8	1 1/2	3/8
GC-110-32B	1"	3/4"	2/0 - 250			3 1/4	1 5/8	3/8
GC-110-32C								
GC-110-32D	* 1"	3/4"	2/0 - 250	1 1/8	3 1/4	3 1/8	1 1/2	3/8
GC-110-33B								
GC-110-33C								
GC-110-33D	1"	3/4"	250 - 500			3 1/4	1 5/8	1/2
GC-110-41B	1 1/4"	1"	#4 - 2/0	1 1/8	2 5/8	2 3/8	1 3/4	3/8
GC-110-41C	* 1 1/4"	1"	#4 - 2/0	1 1/8	3 7/16	2 3/8	1 3/4	3/8
GC-110-41D								
GC-110-42B	1 1/4"	1"	2/0 - 250	1 1/8	2 5/8	3 1/4	1 3/4	3/8
GC-110-42C								
GC-110-42D	* 1 1/4"	1"	2/0 - 250	1 1/8	4 5/16	3 1/2	1 7/8	3/8
GC-110-51A	* 1 1/2"	1 1/4"	#8 SOL. - #4 STR.	1 3/8	4 5/16	3 7/8	2 1/8	3/8
GC-110-51C	* 1 1/2"	1 1/4"	#4 - 2/0	1 3/8	4 5/16	3 7/8	2 1/8	3/8
GC-110-51D								
GC-110-52B	1 1/2"	1 1/4"	2/0 - 250	1 3/8	3	3 7/8	2 1/8	3/8
GC-110-52C	USE GC-110-52-D			1 3/8	4 5/16	3 7/8	2 1/8	3/8
GC-110-52D	* 1 1/2"	1 1/4"	2/0 - 250	1 3/8	4 5/16	3 7/8	2 1/8	3/8
GC-110-53B								
GC-110-53C								
GC-110-53D	* 1 1/2"	1 1/4"	250 - 500	1 3/8	4 11/16	3 7/8	2 1/8	3/8

CATALOG NUMBER	ROD OR TUBE (O.D.)	PIPE IPS	CABLE RAGE MIN. - MAX.	DIMENSIONS IN INCHES				
				A	B	C	D	J
GC-110-61B	2"	1 1/2"	#4 - 2/0	1 1/4	3 5/16	4	2 7/16	3/8
GC-110-61C	2"	1 1/2"	#4 - 2/0	1 1/2	3 5/16	4	2 7/16	3/8
GC-110-61D								
GC-110-62B	2"	1 1/2"	2/0 - 250	1 1/2	3 5/16	4 1/8	2 7/16	3/8
GC-110-62C	2"	1 1/2"	2/0 - 250	1 1/2	3 5/16	4 1/8	2 7/16	3/8
GC-110-62D								
GC-110-63B	2"	1 1/2"	250 - 500	1 1/2	3 5/8	4 1/2	2 9/16	1/2
GC-110-63C								
GC-110-63D	2"	1 1/2"	250 - 500	1 1/2	5 3/8	4 3/4	2 9/16	1/2
GC-110-81A	2"		#8 SOL. - #4 STR.	1 1/2	3 11/16	4 3/8	2 13/16	3/8
GC-110-81C	2"		#4 - 2/0	1 1/2	3 11/16	4 3/8	2 13/16	3/8
GC-110-81D								
GC-110-82B	2"		2/0 - 250	1 1/2	3 3/4	4 5/8	2 7/8	3/8
GC-110-82C	2"		2/0 - 250	1 1/2	3 3/4	4 5/8	2 7/8	3/8
GC-110-82D								
GC-110-83B	2"		250 - 500			5	3	1/2
GC-110-83C								
GC-110-83D	2"		250 - 500	1 5/8	5 13/16	5	3	1/2
GC-110-101B	2 1/2"		#4 - 2/0	1 1/2	4 1/4	5	3 3/8	3/8
GC-110-101C	2 1/2"		#4 - 2/0	1 1/2	4 1/2	5	3 1/2	3/8
GC-110-101D								
GC-110-102B	2 1/2"		2/0 - 250	1 1/2	4 7/8	5	3 3/4	3/8
GC-110-102B	2 1/2"		2/0 - 250	1 1/2	4 7/8	5 1/8	3 3/4	1/2
GC-110-102C	2 1/2"		2/0 - 250	1 1/2	4 7/8	5 1/8	3 3/4	1/2
GC-110-102D								
GC-110-103B	2 1/2"		250 - 500	1 5/8	4 5/8	5 7/8	3 1/2	1/2
GC-110-103C	2 1/2"		250 - 500	1 5/8	4 5/8	5 7/8	3 1/2	1/2
GC-110-103D								
GC-110-121B	3"		#4 - 2/0	1 1/2	5	5 3/4	4	3/8
GC-110-121C	3"		#4 - 2/0	1 1/2	5	5 3/4	4	3/8
GC-110-121D								

CATALOG NUMBER: GC110 FAMILY				
SIZE	DWG NO.	PART / ASSY NO.	REV	
C	C-2336	--	19	
SCALE: NS	DRN BY: KS	DATE: 11/4/1954	SHEET 2	OF 3

CATALOG NUMBER	ROD OR TUBE (O.D.)	PIPE IPS	CABLE RAGE MIN. - MAX.	DIMENSIONS IN INCHES				
				A	B	C	D	J
GC-110-122B		3"	2/0 - 250	1 1/4	4 13/16	5 3/4	4	3/8
GC-110-122C		3"	2/0 - 250	1 1/4	4 13/16	5 3/4	4	3/8
GC-110-122D								
GC-110-123B								
GC-110-123C		3"	250 - 500	1 5/8	5 1/4	6 1/4	4 1/8	1/2
GC-110-123D								
GC-110-141B		3 1/2"	#4 - 2/0	1 1/2	5 5/16	6 7/8	4 7/16	3/8
GC-110-141C		3 1/2"	#4 - 2/0	1 1/2	5 3/8	6 7/8	4 7/16	3/8
GC-110-141D								
GC-110-142B		3 1/2"	2/0 - 250			6	4 1/2	3/8
GC-110-142C		3 1/2"	2/0 - 250	1 1/2	5 3/8	6	4 1/2	3/8
GC-110-142D								
GC-110-143B		3 1/2"	250 - 500	1 5/8	5 5/8	6 5/8	4 1/2	1/2
GC-110-143C		3 1/2"	250 - 500	1 5/8	5 5/8	6 5/8	4 1/2	1/2
GC-110-143D								
GC-110-161B		4"	#4 - 2/0	1 5/8	6	6 1/2	5	3/8
GC-110-161C		4"	#4 - 2/0	1 5/8	6	6 3/4	5	3/8
GC-110-161D								
GC-110-162B		4"	2/0 - 250	1 1/2	5 7/8	6 1/2	5	3/8
GC-110-162C	*	4"	2/0 - 250	1 1/2	5 7/8	6 1/2	5	3/8
GC-110-162C-WD	*	4"	2/0 - 250	1 1/2	7 1/4	6 7/8	5 1/8	1/2
GC-110-162D								
GC-110-163B		4"	250 - 500	1 5/8	6 1/8	6	5	1/2
GC-110-163C		4"	250 - 500	1 5/8	6 1/8	7 1/4	5	1/2
GC-110-163D								
GC-110-201B								
GC-110-201C								
GC-110-201D								
GC-110-202B		5"	2/0 - 250			7 3/4	6 1/8	1/2
GC-110-202C		5"	2/0 - 250	1 1/2	6 13/16	7 11/16	6	3/8
GC-110-202D								

CATALOG NUMBER	ROD OR TUBE (O.D.)	PIPE IPS	CABLE RAGE MIN. - MAX.	DIMENSIONS IN INCHES				
				A	B	C	D	J
GC-110-203B								
GC-110-203C								
GC-110-203D								
GC-110-210	3/4"	1/2"	#4 - 2/0	1 1/8	3 5/16	2 7/8	1 3/8	3/8
GC-110-241B								
GC-110-241C								
GC-110-241D								
GC-110-242B		6"	2/0 - 250	1 5/8	8 5/16	8 7/8	7 1/4	1/2
GC-110-242C								
GC-110-242D								

CATALOG NUMBER: GC110 FAMILY			
SIZE	DWG NO.	PART / ASSY NO.	REV
C	C-2336	--	19
SCALE: NS	DRN BY: KS	DATE: 11/4/1954	SHEET 3 OF 3