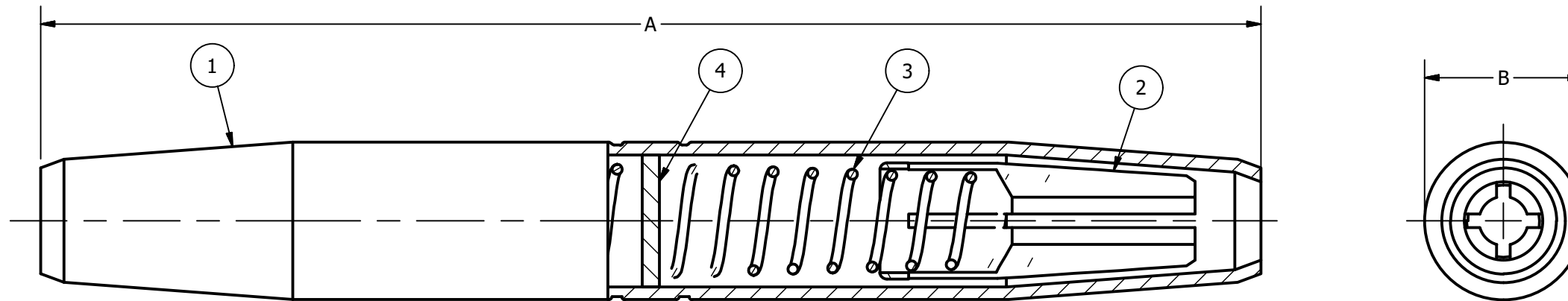


ITEM	DESCRIPTION	QTY
1	TUBE - COPPER	1
2	CONE - BRONZE ALLOY	2
3	SPRING - STAINLESS STEEL OR GALVANIZED STEEL	2
4	CENTRE STOP - STAINLESS STEEL	1

CATALOG NUMBER	CONDUCTOR	APPROXIMATE CONDUCTOR O.D.		SUGGESTED COPPER CONDUCTOR		DIMENSIONS INCHES [MM]		STANDARD PACK
		MIN/MAX (INCHES)	MIN/MAX (MM)	SOLID	STRANDED	A	B	
GL110M	6 mm ²	.10 - .14	2.6 - 3.5	-	-	4.20 [107]	.51 [13]	100
GL111M	10 mm ²	.14 - .17	3.4 - 4.3	#8 SOL #6 SOL	-	4.20 [107]	.51 [13]	100
GL112M	16 mm ² SOL.	.17 - .20	4.2 - 5.2	-	-	4.36 [111]	.55 [14]	100
GL113M	16 mm ² STR.	.20 - .22	5.0 - 5.8	#4 SOL #3 SOL	#4 7 STR	4.36 [111]	.55 [14]	100
GL114M	25 mm ²	.22 - .26	5.8 - 6.6	-	-	5.46 [139]	.71 [18]	100
GL115M	35 mm ²	.25 - .30	6.5 - 7.6	#2 SOL #1 SOL 1/0 SOL	#2 7 STR	5.46 [139]	.71 [18]	100
GL117M	50 mm ²	.31 - .37	7.9 - 9.4	-	-	6.48 [165]	.90 [23]	100
GL118M	70 mm ²	.37 - .43	9.4 - 10.9	2/0 SOL 3/0 SOL	1/0 7 STR 2/0 7 STR	6.48 [165]	.90 [23]	100
GL119M	95 mm ²	.44 - .50	11.3 - 12.6	4/0 SOL	3/0 7 STR	7.98 [203]	1.22 [31]	50
GL120M	120 mm ²	.50 - .56	12.6 - 14.2	-	4/0 7 STR	7.98 [203]	1.22 [31]	50



NOTES:

1. ALL DIMENSIONS FOR REFERENCE ONLY IN. [MM].
2. CONSULT FACTORY FOR RATING.

XXX	05/08/2018	JT	SD
EC #	DATE	CHG BY	RESP ENG
DESC OF DWG: NEW CUSTOMER DRAWING IN INVENTOR PRELIMINARY DRAWING			
REASON (S) FOR CHANGE: DISPOSITION OF MAT'L:			

HPS

CONFIDENTIAL: THIS DRAWING AND ITS CONTACTS ARE CONFIDENTIAL AND THE EXCLUSIVE PROPERTY OF HUBBELL POWER SYSTEMS. NO PUBLICATION, DISTRIBUTION OR COPIES MAY BE MADE WITHOUT THE WRITTEN CONSENT OF HUBBELL POWER SYSTEMS. HUBBELL POWER SYSTEMS UNPUBLISHED ALL RIGHTS RESERVED UNDER THE COPYRIGHT LAWS



HUBBELL POWER SYSTEMS

TITLE OVERHEAD LINE SPLICES METRIC COPPER CONDUCTOR			
SIZE B	DWG NO. CC-25239	CAT / PART / ASSY NO. GL-1XXM	REV B
DO NOT SCALE THIS DRAWING	DRN BY JT	DATE 12/22/17	SHEET 1 OF 1