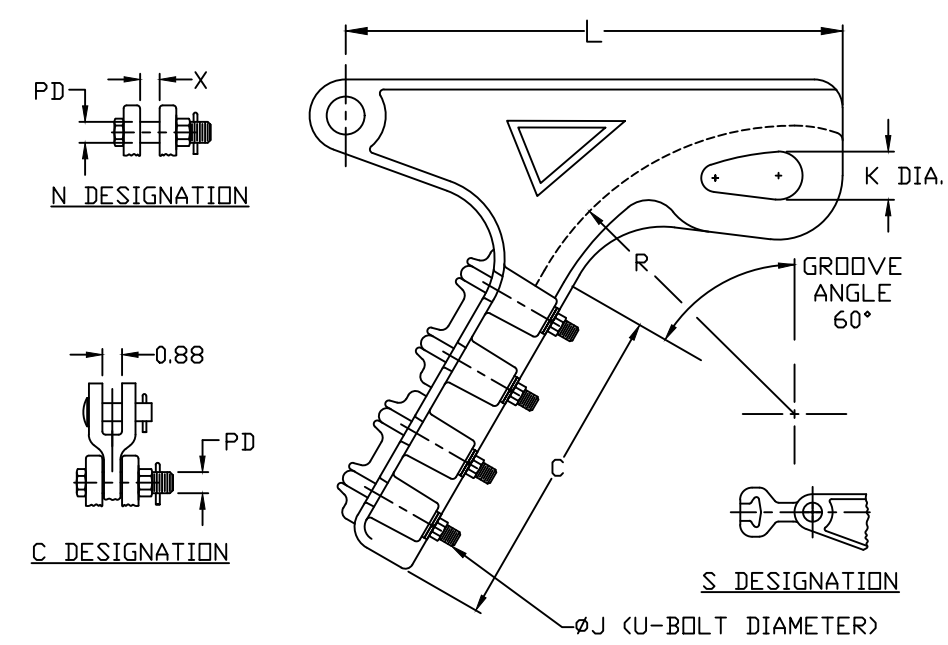


CAT. NUMBER	CABLE RANGE DIA (IN)	ULT. STR. (LBS)	NO. OF U-BOLTS	NO. OF KEEPERS	DIMENSIONS IN INCHES							WT (LBS)
					L	C	K	PD	R	J	X	
BSD-55-S	0.200-0.550	18,000	3	3	10.00	7.50	1.25	0.62	3.75	0.50	0.69	7.7
BSD-55-C												7.2
BSD-55-N												6.4
BSD-68-S	0.300-0.680	18,000	4	4	11.00	9.50	1.31	0.62	4.75	0.50	0.75	10.0
BSD-68-C		18,000										10.0
BSD-68-N		25,000										8.7
BSD-84-S	0.475-0.840	20,000	4	4	12.00	12.00	1.25	0.62	5.50	0.50	1.00	14.0
BSD-84-C		25,000										14.4
BSD-84-N												12.7
BSD-98-S	0.500-0.980	30,000	5	3	13.50	14.00	1.25	0.62	6.00	0.50	1.18	28.6
BSD-98-C		25,000										28.9
BSD-98-N		30,000										27.2
BSD-112-S	0.710-1.15	30,000	5	1	13.13	8.25	1.50	0.75	6.50	0.50	1.37	16.3
BSD-112-C		25,000										16.8
BSD-112-N		35,000										14.8
BSD-130-S	0.700-1.42	30,000	4	1	14.00	9.50	1.71	0.75	7.50	0.63	1.43	26.0
BSD-130-C		25,000										26.5
BSD-130-N		35,000										24.5



- NOTES:
- MATERIAL: -CLAMP BODY AND KEEPER ARE BRONZE ALLOY
 -SOCKET AND CLEVIS BODIES ARE GALV. DUCTILE IRON
 -U-BOLTS, NUTS, LOCKWASHERS, AND CLEVIS PINS ARE GALV. STEEL
 -COTTER PINS ARE STAINLESS STEEL
 - A SUFFIX IS ADDED TO THE CATALOG NUMBER TO DESIGNATE THE REQUIRED FITTINGS AS SHOWN IN THE TABULATION (EXAMPLE: BSD-185-S):
 "S" - SOCKET
 "C" - CLEVIS
 "N" - NO FITTING
 - THE SUFFIX "ED" CAN BE USED TO SPECIFY BRONZE U-BOLTS, LOCKWASHERS, AND NUTS INSTEAD OF GALV. STEEL
 - FOR "HQ" SUFFIX, GALVANIZE ALL STEEL HARDWARE PER CSA G164

75201	8/1/2018	DJ	DJ	HPS [®]	HUBBELL[®] POWER SYSTEMS
EC #	DATE	CHG BY	RESP ENG		
DESC OF DWG: REMOVED BSD163 SERIES REDREW IN ACAD ADDED NOTE FOR HQ SUFFIX CHANGED NO OF HOLES FOR BSD130 TO 5 REASON (S) FOR CHANGE: -- DISPOSITION OF MAT'L: --				CONFIDENTIAL: THIS DRAWING AND ITS CONTENTS ARE CONFIDENTIAL AND THE EXCLUSIVE PROPERTY OF HUBBELL POWER SYSTEMS. NO PUBLICATION, DISTRIBUTION OR COPIES MAY BE MADE WITHOUT THE WRITTEN CONSENT OF HUBBELL POWER SYSTEMS. HUBBELL POWER SYSTEMS UNPUBLISHED. ALL RIGHTS RESERVED UNDER THE COPYRIGHT LAWS.	
SIZE B		DWG NO. C-2671		CAT / PART / ASSY NO. SEE TABLE	
DO NOT SCALE THIS DRAWING		DRN BY WPG		DATE 7/24/51	
				SHEET 1 OF 1	