

FIG. 2

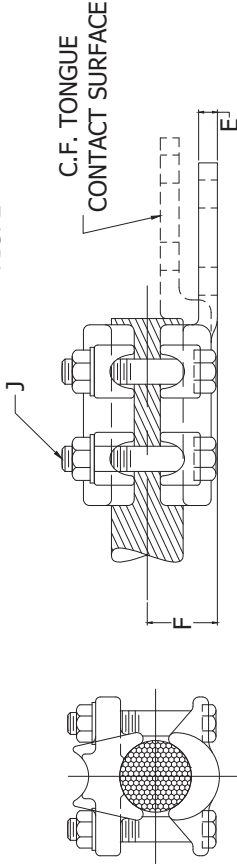


FIG. 4
SEE NOTE 5

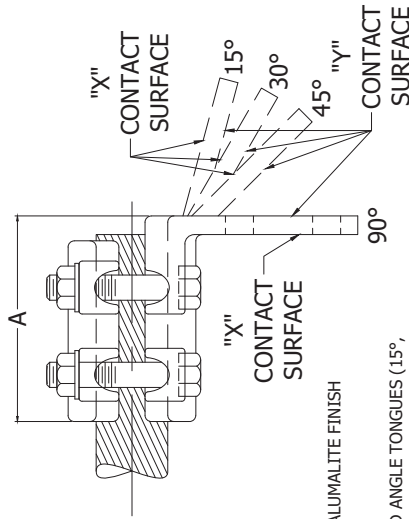


FIG. 5

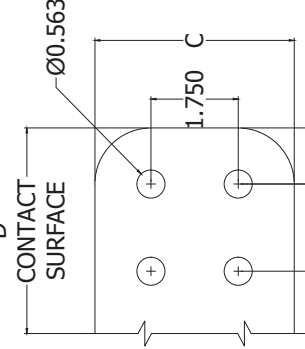


FIG. 3

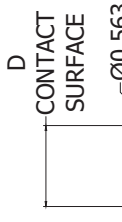
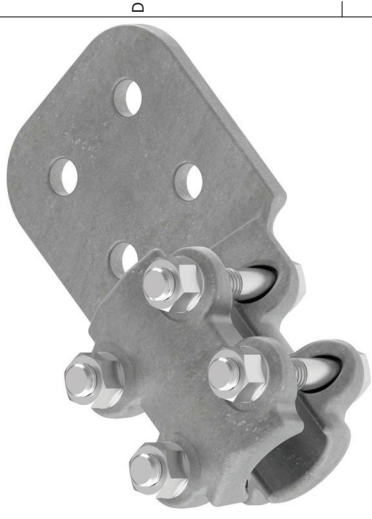


FIG. 1



ACCESS
3D PORTAL
CLICK HERE

ACCESS
3D PDF
CLICK HERE

NOTES:

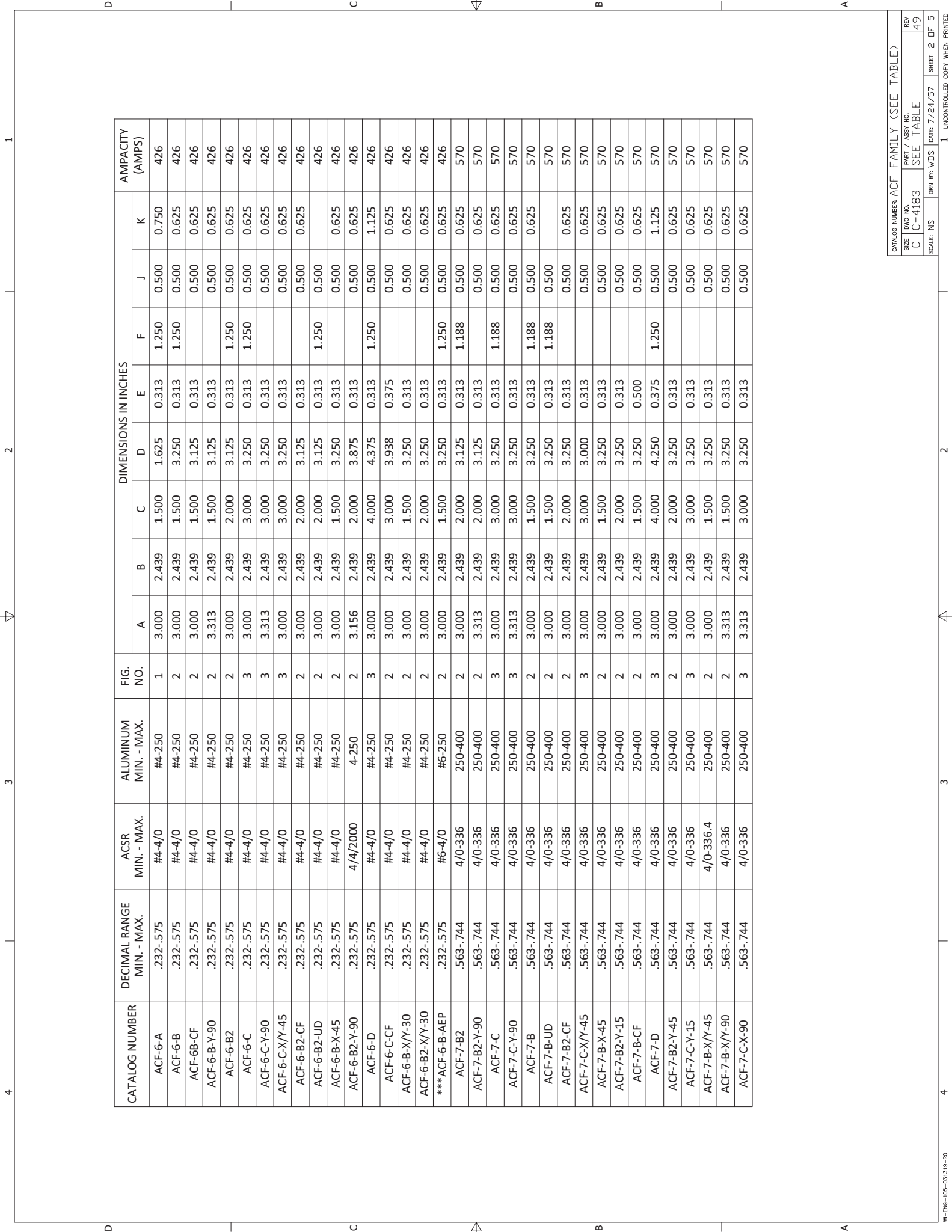
- MATERIAL: CASTINGS: 356-T6 ALUMINUM ALLOY
BOLTS: 2024-T4 ALUMINUM ALLOY
LOCKWASHERS: 7075-T6 ALUMINUM ALLOY WITH 205 ALUMALITE FINISH
NUTS: 6061-T6 ALUMINUM ALLOY WAXED
- CONNECTORS ARE AVAILABLE IN CENTER FORMED (CF) AND ANGLE TONGUES (15°, 30°, 45°, AND 90° X OR Y) TO ORDER ADD SUFFIX TO CAT. NO. (EXAMPLE: ACF-6B-CF OR ACF-6B-X-90)
- ITEMS MARKED WITH A (*) (CABLE SIZES 2000-2500 MCM) ARE EQUIPPED WITH SIX BOLTS FOR GREATER PULLOUT STRENGTH
- ITEMS MARKED WITH (**) (CABLE RANGE 2,000-2,200 & UP) ARE EQUIPPED WITH EIGHT BOLTS.
- TERMINALS USING #6 CAPS ARE MULTI-CAPS. TO ORDER SIZES WITH MULTI-CAPS ADD "M" TO CAT. NO. (EXAMPLE: ACFM-13-C)
- CAT. ITEMS WITH "AEP" SUFFIX REQUIRE (4) .688 DIA. HOLES ON 2"X2" CENTERS
- "ONC" SUFFIX DESIGNATES TERMINALS TO COME WITH TRANSITION PLATES
- ITEMS WITH (****) COME WITH #6 CAP FOR AEP
- "UD" SUFFIX DESIGNATES AN UN-DRILLED PAD
- "GP" SUFFIX DESIGNATES TIN PLATING ON ALUMINUM CONNECTOR.
- ITEMS WITH "X", "Y", OR "XY" SUFFIX CALL FOR A MACHINED CONTACT SURFACE

| | | | | | |
|--|-----------|--------|----|-----|---------|
| EC # | DATE | CHG BY | HG | PTB | APPD BY |
| 2105260095591 | 5/26/2021 | | | | |
| DESC OF DWG: ADDED X/Y TO ACF7C AND NOTE 11 | | | | | |
| ADDED IMAGE | | | | | |
| DIM D ON ACF16C | | | | | |
| UPDATE TABLE AND 3D PDF | | | | | |
| REASON (S) FOR CHANGE: -- | | | | | |
| DISPOSITION OF MAT'L: --- | | | | | |

| | |
|--------------------------------|---|
| | |
| TITLE | |
| ALUMINUM TERMINAL CONNECTOR | |
| ACSR OR ALUMINUM CABLE TO FLAT | |
| CATALOG NUMBER: | ACF FAMILY (SEE TABLE) |
| SIZE | DWG NO. PART / ASSY NO. |
| C | C-4183 SEE TABLE |
| SCALE: | NS DRN BY: VDS DATE: 7/24/57 SHEET 1 OF 5 |

| CATALOG NUMBER | DECIMAL RANGE MIN. - MAX. | ACSR MIN. - MAX. | ALUMINUM MIN. - MAX. | FIG. NO. | DIMENSIONS IN INCHES | | | | | | | | | | AMPACITY (AMPS) |
|-----------------|------------------------------|---------------------|-------------------------|-------------|----------------------|-------|-------|-------|-------|-------|-------|-------|-----|--|--------------------|
| | | | | | A | B | C | D | E | F | J | K | | | |
| ACF-6-A | .232-.575 | #4-4/0 | #4-250 | 1 | 3.000 | 2.439 | 1.500 | 1.625 | 0.313 | 1.250 | 0.500 | 0.750 | 426 | | |
| ACF-6-B | .232-.575 | #4-4/0 | #4-250 | 2 | 3.000 | 2.439 | 1.500 | 3.250 | 0.313 | 1.250 | 0.500 | 0.625 | 426 | | |
| ACF-6B-CF | .232-.575 | #4-4/0 | #4-250 | 2 | 3.000 | 2.439 | 1.500 | 3.125 | 0.313 | | 0.500 | 0.625 | 426 | | |
| ACF-6-B-Y-90 | .232-.575 | #4-4/0 | #4-250 | 2 | 3.313 | 2.439 | 1.500 | 3.125 | 0.313 | | 0.500 | 0.625 | 426 | | |
| ACF-6-B2 | .232-.575 | #4-4/0 | #4-250 | 2 | 3.000 | 2.439 | 2.000 | 3.125 | 0.313 | 1.250 | 0.500 | 0.625 | 426 | | |
| ACF-6-C | .232-.575 | #4-4/0 | #4-250 | 3 | 3.000 | 2.439 | 3.000 | 3.250 | 0.313 | 1.250 | 0.500 | 0.625 | 426 | | |
| ACF-6-C-Y-90 | .232-.575 | #4-4/0 | #4-250 | 3 | 3.313 | 2.439 | 3.000 | 3.250 | 0.313 | | 0.500 | 0.625 | 426 | | |
| ACF-6-C-X/Y-45 | .232-.575 | #4-4/0 | #4-250 | 3 | 3.000 | 2.439 | 3.000 | 3.250 | 0.313 | | 0.500 | 0.625 | 426 | | |
| ACF-6-B2-CF | .232-.575 | #4-4/0 | #4-250 | 2 | 3.000 | 2.439 | 2.000 | 3.125 | 0.313 | | 0.500 | 0.625 | 426 | | |
| ACF-6-B2-UD | .232-.575 | #4-4/0 | #4-250 | 2 | 3.000 | 2.439 | 2.000 | 3.125 | 0.313 | 1.250 | 0.500 | | 426 | | |
| ACF-6-B-X-45 | .232-.575 | #4-4/0 | #4-250 | 2 | 3.000 | 2.439 | 1.500 | 3.250 | 0.313 | | 0.500 | 0.625 | 426 | | |
| ACF-6-B2-Y-90 | .232-.575 | 4/4/2000 | 4-250 | 2 | 3.156 | 2.439 | 2.000 | 3.875 | 0.313 | | 0.500 | 0.625 | 426 | | |
| ACF-6-D | .232-.575 | #4-4/0 | #4-250 | 3 | 3.000 | 2.439 | 4.000 | 4.375 | 0.313 | 1.250 | 0.500 | 1.125 | 426 | | |
| ACF-6-C-CF | .232-.575 | #4-4/0 | #4-250 | 2 | 3.000 | 2.439 | 3.000 | 3.938 | 0.375 | | 0.500 | 0.625 | 426 | | |
| ACF-6-B-X/Y-30 | .232-.575 | #4-4/0 | #4-250 | 2 | 3.000 | 2.439 | 1.500 | 3.250 | 0.313 | | 0.500 | 0.625 | 426 | | |
| ACF-6-B2-X/Y-30 | .232-.575 | #4-4/0 | #4-250 | 2 | 3.000 | 2.439 | 2.000 | 3.250 | 0.313 | | 0.500 | 0.625 | 426 | | |
| ***ACF-6-B-AEP | .232-.575 | #6-4/0 | #6-250 | 2 | 3.000 | 2.439 | 1.500 | 3.250 | 0.313 | 1.250 | 0.500 | 0.625 | 426 | | |
| ACF-7-B2 | .563-.744 | 4/0-336 | 250-400 | 2 | 3.000 | 2.439 | 2.000 | 3.125 | 0.313 | 1.188 | 0.500 | 0.625 | 570 | | |
| ACF-7-B2-Y-90 | .563-.744 | 4/0-336 | 250-400 | 2 | 3.313 | 2.439 | 2.000 | 3.125 | 0.313 | | 0.500 | 0.625 | 570 | | |
| ACF-7-C | .563-.744 | 4/0-336 | 250-400 | 3 | 3.000 | 2.439 | 3.000 | 3.250 | 0.313 | 1.188 | 0.500 | 0.625 | 570 | | |
| ACF-7-C-Y-90 | .563-.744 | 4/0-336 | 250-400 | 3 | 3.313 | 2.439 | 3.000 | 3.250 | 0.313 | | 0.500 | 0.625 | 570 | | |
| ACF-7-B | .563-.744 | 4/0-336 | 250-400 | 2 | 3.000 | 2.439 | 1.500 | 3.250 | 0.313 | 1.188 | 0.500 | 0.625 | 570 | | |
| ACF-7-B-UD | .563-.744 | 4/0-336 | 250-400 | 2 | 3.000 | 2.439 | 1.500 | 3.250 | 0.313 | 1.188 | 0.500 | | 570 | | |
| ACF-7-B2-CF | .563-.744 | 4/0-336 | 250-400 | 2 | 3.000 | 2.439 | 2.000 | 3.250 | 0.313 | | 0.500 | 0.625 | 570 | | |
| ACF-7-C-X/Y-45 | .563-.744 | 4/0-336 | 250-400 | 3 | 3.000 | 2.439 | 3.000 | 3.000 | 0.313 | | 0.500 | 0.625 | 570 | | |
| ACF-7-B-X-45 | .563-.744 | 4/0-336 | 250-400 | 2 | 3.000 | 2.439 | 1.500 | 3.250 | 0.313 | | 0.500 | 0.625 | 570 | | |
| ACF-7-B2-Y-15 | .563-.744 | 4/0-336 | 250-400 | 2 | 3.000 | 2.439 | 2.000 | 3.250 | 0.313 | | 0.500 | 0.625 | 570 | | |
| ACF-7-B-CF | .563-.744 | 4/0-336 | 250-400 | 2 | 3.000 | 2.439 | 1.500 | 3.250 | 0.500 | | 0.500 | 0.625 | 570 | | |
| ACF-7-D | .563-.744 | 4/0-336 | 250-400 | 3 | 3.000 | 2.439 | 4.000 | 4.250 | 0.375 | 1.250 | 0.500 | 1.125 | 570 | | |
| ACF-7-B2-Y-45 | .563-.744 | 4/0-336 | 250-400 | 2 | 3.000 | 2.439 | 2.000 | 3.250 | 0.313 | | 0.500 | 0.625 | 570 | | |
| ACF-7-C-Y-15 | .563-.744 | 4/0-336 | 250-400 | 3 | 3.000 | 2.439 | 3.000 | 3.250 | 0.313 | | 0.500 | 0.625 | 570 | | |
| ACF-7-B-X/Y-45 | .563-.744 | 4/0-336.4 | 250-400 | 2 | 3.000 | 2.439 | 1.500 | 3.250 | 0.313 | | 0.500 | 0.625 | 570 | | |
| ACF-7-B-X/Y-90 | .563-.744 | 4/0-336 | 250-400 | 2 | 3.313 | 2.439 | 1.500 | 3.250 | 0.313 | | 0.500 | 0.625 | 570 | | |
| ACF-7-C-X-90 | .563-.744 | 4/0-336 | 250-400 | 3 | 3.313 | 2.439 | 3.000 | 3.250 | 0.313 | | 0.500 | 0.625 | 570 | | |

CATALOG NUMBER: ACF FAMILY (SEE TABLE)
 PART / ASSY NO. C-4183
 SEE TABLE
 REV 49
 DATE: 7/24/57
 SHEET 2 OF 5
 UNCONTROLLED COPY WHEN PRINTED

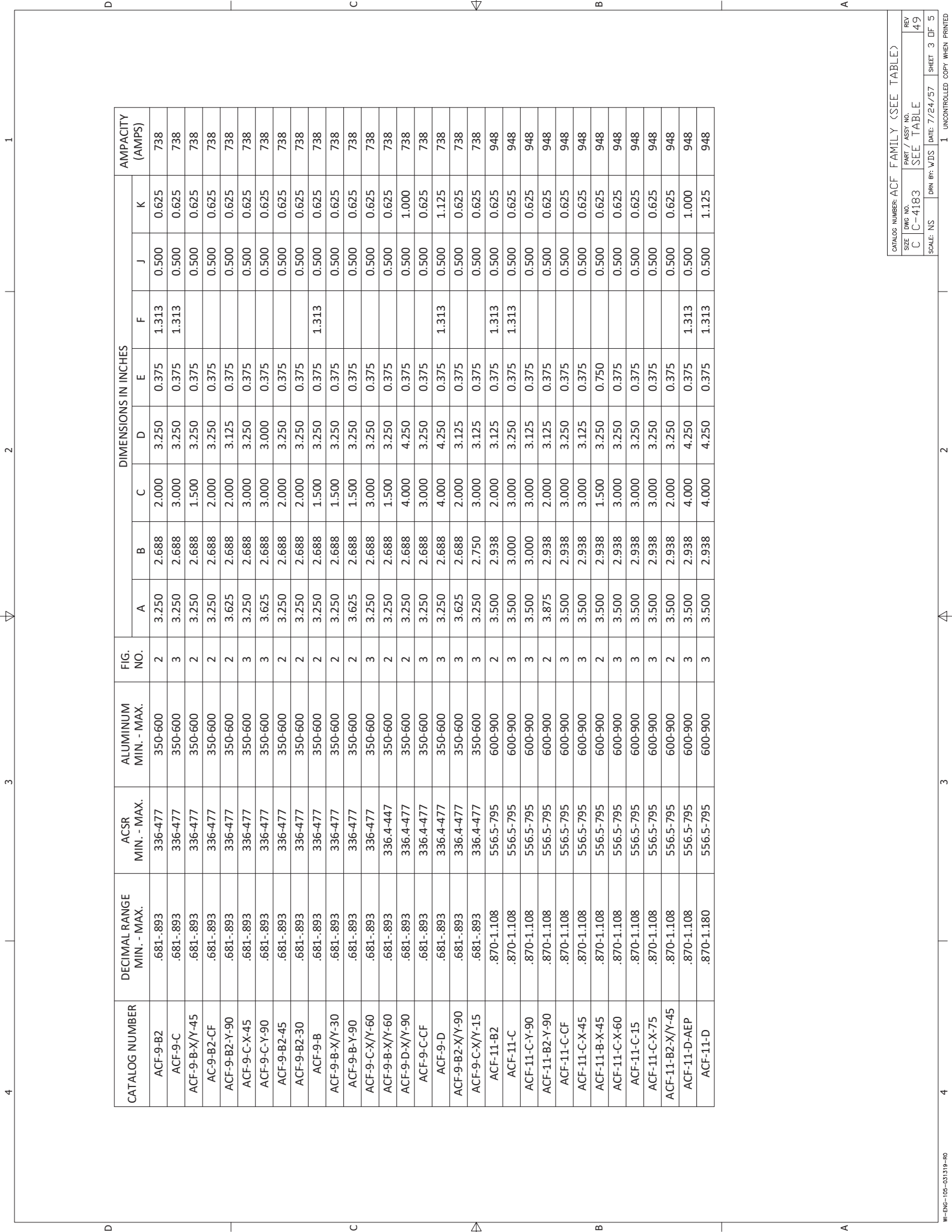


1 2 3 4

1 2 3 4

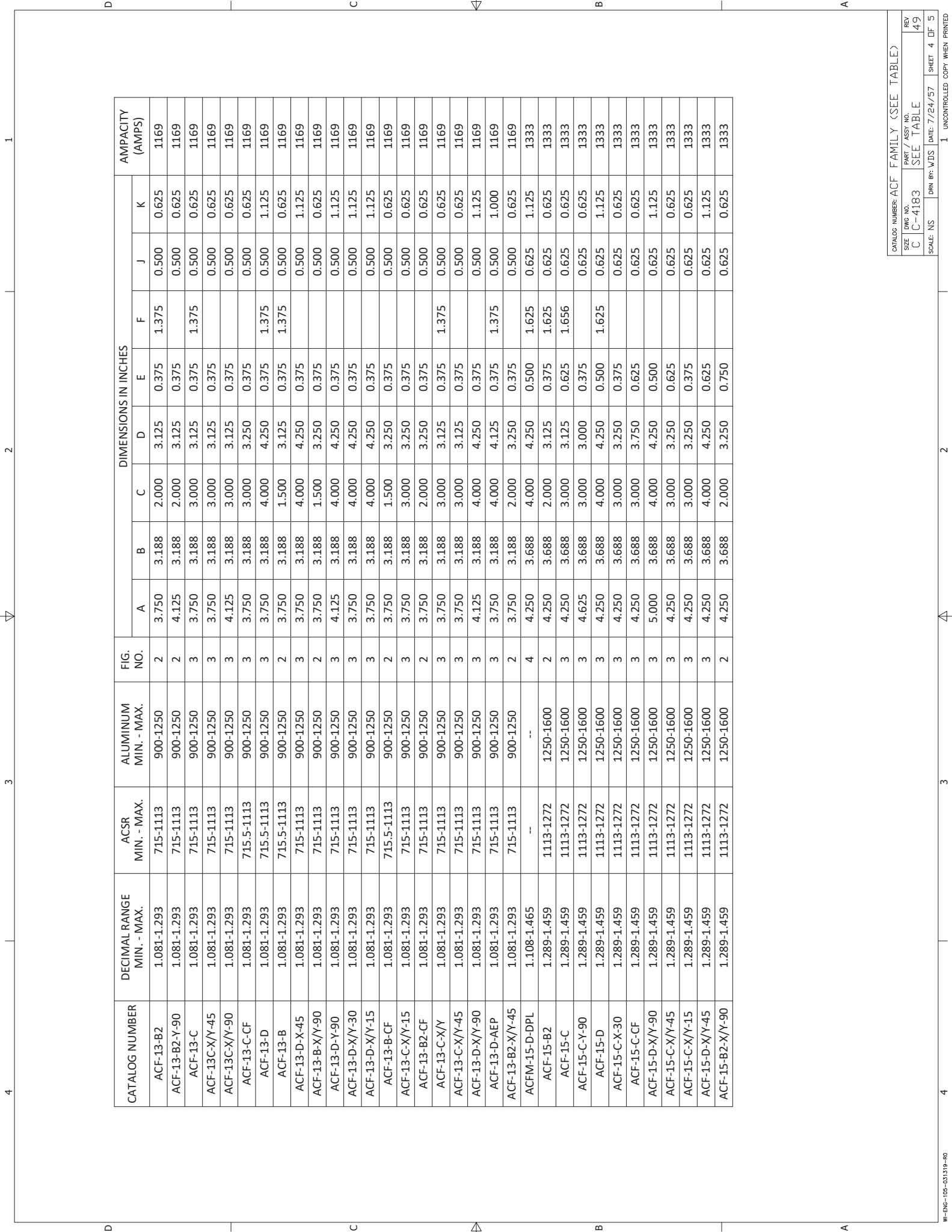
| CATALOG NUMBER | DECIMAL RANGE MIN. - MAX. | ACSR MIN. - MAX. | ALUMINUM MIN. - MAX. | FIG. NO. | DIMENSIONS IN INCHES | | | | | | | AMPACITY (AMPS) | |
|------------------|------------------------------|---------------------|-------------------------|-------------|----------------------|-------|-------|-------|-------|-------|-------|--------------------|-----|
| | | | | | A | B | C | D | E | F | J | | K |
| ACF-9-B2 | .681-.893 | 336-477 | 350-600 | 2 | 3.250 | 2.688 | 2.000 | 3.250 | 0.375 | 1.313 | 0.500 | 0.625 | 738 |
| ACF-9-C | .681-.893 | 336-477 | 350-600 | 3 | 3.250 | 2.688 | 3.000 | 3.250 | 0.375 | 1.313 | 0.500 | 0.625 | 738 |
| ACF-9-B-X/Y-45 | .681-.893 | 336-477 | 350-600 | 2 | 3.250 | 2.688 | 1.500 | 3.250 | 0.375 | | 0.500 | 0.625 | 738 |
| AC-9-B2-CF | .681-.893 | 336-477 | 350-600 | 2 | 3.250 | 2.688 | 2.000 | 3.250 | 0.375 | | 0.500 | 0.625 | 738 |
| ACF-9-B2-Y-90 | .681-.893 | 336-477 | 350-600 | 2 | 3.625 | 2.688 | 2.000 | 3.125 | 0.375 | | 0.500 | 0.625 | 738 |
| ACF-9-C-X-45 | .681-.893 | 336-477 | 350-600 | 3 | 3.250 | 2.688 | 3.000 | 3.250 | 0.375 | | 0.500 | 0.625 | 738 |
| ACF-9-C-Y-90 | .681-.893 | 336-477 | 350-600 | 3 | 3.625 | 2.688 | 3.000 | 3.000 | 0.375 | | 0.500 | 0.625 | 738 |
| ACF-9-B2-45 | .681-.893 | 336-477 | 350-600 | 2 | 3.250 | 2.688 | 2.000 | 3.250 | 0.375 | | 0.500 | 0.625 | 738 |
| ACF-9-B2-30 | .681-.893 | 336-477 | 350-600 | 2 | 3.250 | 2.688 | 2.000 | 3.250 | 0.375 | | 0.500 | 0.625 | 738 |
| ACF-9-B | .681-.893 | 336-477 | 350-600 | 2 | 3.250 | 2.688 | 1.500 | 3.250 | 0.375 | 1.313 | 0.500 | 0.625 | 738 |
| ACF-9-B-X/Y-30 | .681-.893 | 336-477 | 350-600 | 2 | 3.250 | 2.688 | 1.500 | 3.250 | 0.375 | | 0.500 | 0.625 | 738 |
| ACF-9-B-Y-90 | .681-.893 | 336-477 | 350-600 | 2 | 3.625 | 2.688 | 1.500 | 3.250 | 0.375 | | 0.500 | 0.625 | 738 |
| ACF-9-C-X/Y-60 | .681-.893 | 336-477 | 350-600 | 3 | 3.250 | 2.688 | 3.000 | 3.250 | 0.375 | | 0.500 | 0.625 | 738 |
| ACF-9-B-X/Y-60 | .681-.893 | 336.4-447 | 350-600 | 2 | 3.250 | 2.688 | 1.500 | 3.250 | 0.375 | | 0.500 | 0.625 | 738 |
| ACF-9-D-X/Y-90 | .681-.893 | 336.4-477 | 350-600 | 2 | 3.250 | 2.688 | 4.000 | 4.250 | 0.375 | | 0.500 | 1.000 | 738 |
| ACF-9-C-CF | .681-.893 | 336.4-477 | 350-600 | 3 | 3.250 | 2.688 | 3.000 | 3.250 | 0.375 | | 0.500 | 0.625 | 738 |
| ACF-9-D | .681-.893 | 336.4-477 | 350-600 | 3 | 3.250 | 2.688 | 4.000 | 4.250 | 0.375 | 1.313 | 0.500 | 1.125 | 738 |
| ACF-9-B2-X/Y-90 | .681-.893 | 336.4-477 | 350-600 | 3 | 3.625 | 2.688 | 2.000 | 3.125 | 0.375 | | 0.500 | 0.625 | 738 |
| ACF-9-C-X/Y-15 | .681-.893 | 336.4-477 | 350-600 | 3 | 3.250 | 2.750 | 3.000 | 3.125 | 0.375 | | 0.500 | 0.625 | 738 |
| ACF-11-B2 | .870-1.108 | 556.5-795 | 600-900 | 2 | 3.500 | 2.938 | 2.000 | 3.125 | 0.375 | 1.313 | 0.500 | 0.625 | 948 |
| ACF-11-C | .870-1.108 | 556.5-795 | 600-900 | 3 | 3.500 | 3.000 | 3.000 | 3.250 | 0.375 | 1.313 | 0.500 | 0.625 | 948 |
| ACF-11-C-Y-90 | .870-1.108 | 556.5-795 | 600-900 | 3 | 3.500 | 3.000 | 3.000 | 3.125 | 0.375 | | 0.500 | 0.625 | 948 |
| ACF-11-B2-Y-90 | .870-1.108 | 556.5-795 | 600-900 | 2 | 3.875 | 2.938 | 2.000 | 3.125 | 0.375 | | 0.500 | 0.625 | 948 |
| ACF-11-C-CF | .870-1.108 | 556.5-795 | 600-900 | 3 | 3.500 | 2.938 | 3.000 | 3.250 | 0.375 | | 0.500 | 0.625 | 948 |
| ACF-11-C-X-45 | .870-1.108 | 556.5-795 | 600-900 | 3 | 3.500 | 2.938 | 3.000 | 3.125 | 0.375 | | 0.500 | 0.625 | 948 |
| ACF-11-B-X-45 | .870-1.108 | 556.5-795 | 600-900 | 2 | 3.500 | 2.938 | 1.500 | 3.250 | 0.750 | | 0.500 | 0.625 | 948 |
| ACF-11-C-X-60 | .870-1.108 | 556.5-795 | 600-900 | 3 | 3.500 | 2.938 | 3.000 | 3.250 | 0.375 | | 0.500 | 0.625 | 948 |
| ACF-11-C-15 | .870-1.108 | 556.5-795 | 600-900 | 3 | 3.500 | 2.938 | 3.000 | 3.250 | 0.375 | | 0.500 | 0.625 | 948 |
| ACF-11-C-X-75 | .870-1.108 | 556.5-795 | 600-900 | 3 | 3.500 | 2.938 | 3.000 | 3.250 | 0.375 | | 0.500 | 0.625 | 948 |
| ACF-11-B2-X/Y-45 | .870-1.108 | 556.5-795 | 600-900 | 2 | 3.500 | 2.938 | 2.000 | 3.250 | 0.375 | | 0.500 | 0.625 | 948 |
| ACF-11-D-AEP | .870-1.108 | 556.5-795 | 600-900 | 3 | 3.500 | 2.938 | 4.000 | 4.250 | 0.375 | 1.313 | 0.500 | 1.000 | 948 |
| ACF-11-D | .870-1.180 | 556.5-795 | 600-900 | 3 | 3.500 | 2.938 | 4.000 | 4.250 | 0.375 | 1.313 | 0.500 | 1.125 | 948 |

CATALOG NUMBER: ACF FAMILY (SEE TABLE)
 PART / ASSY NO.
 SIZE C-4183 SEE TABLE
 REV 49
 SHEET 3 OF 5
 DATE: 7/24/57
 DRN BY: VJDS
 1 UNCONTROLLED COPY WHEN PRINTED



| CATALOG NUMBER | DECIMAL RANGE MIN. - MAX. | ACSR MIN. - MAX. | ALUMINUM MIN. - MAX. | FIG. NO. | DIMENSIONS IN INCHES | | | | | | | AMPACITY (AMPS) | |
|------------------|------------------------------|---------------------|-------------------------|-------------|----------------------|-------|-------|-------|-------|-------|-------|--------------------|------|
| | | | | | A | B | C | D | E | F | J | | K |
| ACF-13-B2 | 1.081-1.293 | 715-1113 | 900-1250 | 2 | 3.750 | 3.188 | 2.000 | 3.125 | 0.375 | 1.375 | 0.500 | 0.625 | 1169 |
| ACF-13-B2-Y-90 | 1.081-1.293 | 715-1113 | 900-1250 | 2 | 4.125 | 3.188 | 2.000 | 3.125 | 0.375 | | 0.500 | 0.625 | 1169 |
| ACF-13-C | 1.081-1.293 | 715-1113 | 900-1250 | 3 | 3.750 | 3.188 | 3.000 | 3.125 | 0.375 | 1.375 | 0.500 | 0.625 | 1169 |
| ACF-13-C-X/Y-45 | 1.081-1.293 | 715-1113 | 900-1250 | 3 | 3.750 | 3.188 | 3.000 | 3.125 | 0.375 | | 0.500 | 0.625 | 1169 |
| ACF-13-C-X/Y-90 | 1.081-1.293 | 715-1113 | 900-1250 | 3 | 4.125 | 3.188 | 3.000 | 3.125 | 0.375 | | 0.500 | 0.625 | 1169 |
| ACF-13-C-CF | 1.081-1.293 | 715.5-1113 | 900-1250 | 3 | 3.750 | 3.188 | 3.000 | 3.250 | 0.375 | | 0.500 | 0.625 | 1169 |
| ACF-13-D | 1.081-1.293 | 715.5-1113 | 900-1250 | 3 | 3.750 | 3.188 | 4.000 | 4.250 | 0.375 | 1.375 | 0.500 | 1.125 | 1169 |
| ACF-13-B | 1.081-1.293 | 715.5-1113 | 900-1250 | 2 | 3.750 | 3.188 | 1.500 | 3.125 | 0.375 | 1.375 | 0.500 | 0.625 | 1169 |
| ACF-13-D-X-45 | 1.081-1.293 | 715-1113 | 900-1250 | 3 | 3.750 | 3.188 | 4.000 | 4.250 | 0.375 | | 0.500 | 1.125 | 1169 |
| ACF-13-B-X/Y-90 | 1.081-1.293 | 715-1113 | 900-1250 | 2 | 3.750 | 3.188 | 1.500 | 3.250 | 0.375 | | 0.500 | 0.625 | 1169 |
| ACF-13-D-Y-90 | 1.081-1.293 | 715-1113 | 900-1250 | 3 | 4.125 | 3.188 | 4.000 | 4.250 | 0.375 | | 0.500 | 1.125 | 1169 |
| ACF-13-D-X/Y-30 | 1.081-1.293 | 715-1113 | 900-1250 | 3 | 3.750 | 3.188 | 4.000 | 4.250 | 0.375 | | 0.500 | 1.125 | 1169 |
| ACF-13-D-X/Y-15 | 1.081-1.293 | 715-1113 | 900-1250 | 2 | 3.750 | 3.188 | 1.500 | 3.250 | 0.375 | | 0.500 | 0.625 | 1169 |
| ACF-13-B-CF | 1.081-1.293 | 715-1113 | 900-1250 | 3 | 3.750 | 3.188 | 3.000 | 3.250 | 0.375 | | 0.500 | 0.625 | 1169 |
| ACF-13-C-X/Y-15 | 1.081-1.293 | 715-1113 | 900-1250 | 3 | 3.750 | 3.188 | 3.000 | 3.250 | 0.375 | | 0.500 | 0.625 | 1169 |
| ACF-13-B2-CF | 1.081-1.293 | 715-1113 | 900-1250 | 2 | 3.750 | 3.188 | 2.000 | 3.250 | 0.375 | | 0.500 | 0.625 | 1169 |
| ACF-13-C-X/Y | 1.081-1.293 | 715-1113 | 900-1250 | 3 | 3.750 | 3.188 | 3.000 | 3.125 | 0.375 | 1.375 | 0.500 | 0.625 | 1169 |
| ACF-13-C-X/Y-45 | 1.081-1.293 | 715-1113 | 900-1250 | 3 | 3.750 | 3.188 | 3.000 | 3.125 | 0.375 | | 0.500 | 0.625 | 1169 |
| ACF-13-D-X/Y-90 | 1.081-1.293 | 715-1113 | 900-1250 | 3 | 4.125 | 3.188 | 4.000 | 4.250 | 0.375 | | 0.500 | 1.125 | 1169 |
| ACF-13-D-AEP | 1.081-1.293 | 715-1113 | 900-1250 | 3 | 3.750 | 3.188 | 4.000 | 4.125 | 0.375 | 1.375 | 0.500 | 1.000 | 1169 |
| ACF-13-B2-X/Y-45 | 1.081-1.293 | 715-1113 | 900-1250 | 2 | 3.750 | 3.188 | 2.000 | 3.250 | 0.375 | | 0.500 | 0.625 | 1169 |
| ACFM-15-D-DPL | 1.108-1.465 | -- | -- | 4 | 4.250 | 3.688 | 4.000 | 4.250 | 0.500 | 1.625 | 0.625 | 1.125 | 1333 |
| ACF-15-B2 | 1.289-1.459 | 1113-1272 | 1250-1600 | 2 | 4.250 | 3.688 | 2.000 | 3.125 | 0.375 | 1.625 | 0.625 | 0.625 | 1333 |
| ACF-15-C | 1.289-1.459 | 1113-1272 | 1250-1600 | 3 | 4.250 | 3.688 | 3.000 | 3.125 | 0.625 | 1.656 | 0.625 | 0.625 | 1333 |
| ACF-15-C-Y-90 | 1.289-1.459 | 1113-1272 | 1250-1600 | 3 | 4.625 | 3.688 | 3.000 | 3.000 | 0.375 | | 0.625 | 0.625 | 1333 |
| ACF-15-D | 1.289-1.459 | 1113-1272 | 1250-1600 | 3 | 4.250 | 3.688 | 4.000 | 4.250 | 0.500 | 1.625 | 0.625 | 1.125 | 1333 |
| ACF-15-C-X-30 | 1.289-1.459 | 1113-1272 | 1250-1600 | 3 | 4.250 | 3.688 | 3.000 | 3.250 | 0.375 | | 0.625 | 0.625 | 1333 |
| ACF-15-C-CF | 1.289-1.459 | 1113-1272 | 1250-1600 | 3 | 4.250 | 3.688 | 3.000 | 3.750 | 0.625 | | 0.625 | 0.625 | 1333 |
| ACF-15-D-X/Y-90 | 1.289-1.459 | 1113-1272 | 1250-1600 | 3 | 5.000 | 3.688 | 4.000 | 4.250 | 0.500 | | 0.625 | 1.125 | 1333 |
| ACF-15-C-X/Y-45 | 1.289-1.459 | 1113-1272 | 1250-1600 | 3 | 4.250 | 3.688 | 3.000 | 3.250 | 0.625 | | 0.625 | 0.625 | 1333 |
| ACF-15-C-X/Y-15 | 1.289-1.459 | 1113-1272 | 1250-1600 | 3 | 4.250 | 3.688 | 3.000 | 3.250 | 0.375 | | 0.625 | 0.625 | 1333 |
| ACF-15-D-X/Y-45 | 1.289-1.459 | 1113-1272 | 1250-1600 | 3 | 4.250 | 3.688 | 4.000 | 4.250 | 0.625 | | 0.625 | 1.125 | 1333 |
| ACF-15-B2-X/Y-90 | 1.289-1.459 | 1113-1272 | 1250-1600 | 2 | 4.250 | 3.688 | 2.000 | 3.250 | 0.750 | | 0.625 | 0.625 | 1333 |

CATALOG NUMBER: ACF FAMILY (SEE TABLE)
 PART / ASSY NO.
 SIZE C C-4183 SEE TABLE
 REV 49
 SHEET 4 OF 5
 DATE: 7/24/57
 DRN BY: VJDS
 1 UNCONTROLLED COPY WHEN PRINTED



| CATALOG NUMBER | DECIMAL RANGE MIN. - MAX. | ACSR MIN. - MAX. | ALUMINUM MIN. - MAX. | FIG. NO. | DIMENSIONS IN INCHES | | | | | | | | | | AMPACITY (AMPS) |
|---------------------|------------------------------|---------------------|-------------------------|-------------|----------------------|-------|-------|-------|-------|-------|-------|-------|------|--|--------------------|
| | | | | | A | B | C | D | E | F | J | K | | | |
| ACF-16-B2 | 1.382-1.632 | 1272-1590 | 1500-2000 | 2 | 4.500 | 3.938 | 2.000 | 3.125 | 0.439 | 1.750 | 0.625 | 0.625 | 1518 | | |
| ACF-16-C | 1.382-1.632 | 1272-1590 | 1500-2000 | 3 | 4.500 | 3.938 | 3.000 | 3.250 | 0.439 | 1.750 | 0.625 | 0.625 | 1518 | | |
| ACF-16-B2-Y-90 | 1.382-1.632 | 1272-1590 | 1500-2000 | 2 | 4.938 | 3.938 | 2.000 | 3.000 | 0.439 | | 0.625 | 0.625 | 1518 | | |
| ACF-16-B2-CF | 1.382-1.632 | 1272-1590 | 1500-2000 | 2 | 4.500 | 3.938 | 2.000 | 3.250 | 0.439 | | 0.625 | 0.625 | 1518 | | |
| ACF-16-C-X/Y-90 | 1.382-1.632 | 1272-1590 | 1500-2000 | 3 | 4.938 | 3.938 | 3.000 | 3.250 | 0.439 | | 0.625 | 0.625 | 1518 | | |
| ACF-16-B2-X/Y-45 | 1.382-1.632 | 1272-1590 | 1500-2000 | 2 | 4.500 | 3.938 | 2.000 | 3.250 | 0.439 | | 0.625 | 0.625 | 1518 | | |
| ACF-16-C-CF | 1.382-1.632 | 1272-1590 | 1500-2000 | 3 | 4.500 | 3.938 | 3.000 | 3.250 | 0.439 | | 0.625 | 0.625 | 1518 | | |
| ACF-16-D | 1.382-1.632 | 1272-1590 | 1500-2000 | 3 | 4.500 | 3.938 | 4.000 | 4.250 | 0.439 | 1.750 | 0.625 | 1.125 | 1518 | | |
| ACF-16-D-Y-90 | 1.382-1.632 | 1272-1590 | 1500-2000 | 3 | 4.938 | 3.938 | 4.000 | 4.250 | 0.439 | | 0.625 | 1.125 | 1518 | | |
| ACF-16-C-X/Y-30 | 1.382-1.632 | 1272-1590 | 1500-2000 | 3 | 4.500 | 3.938 | 3.000 | 3.250 | 0.439 | | 0.625 | 0.625 | 1518 | | |
| ACF-16-B2-X/Y-30 | 1.382-1.632 | 1272-1590 | 1500-2000 | 2 | 4.500 | 3.938 | 2.000 | 3.250 | 0.439 | | 0.625 | 0.625 | 1518 | | |
| ACF-16-D-AEP | 1.382-1.632 | 1272-1590 | 1500-2000 | 3 | 4.500 | 3.938 | 4.000 | 4.250 | 0.439 | 1.750 | 0.625 | 1.000 | 1518 | | |
| ACF-15-D-X/Y-90-AEP | 1.382-1.632 | 1272-1590 | 1500-2000 | 3 | 4.500 | 3.938 | 4.000 | 4.250 | 0.439 | 1.750 | 0.625 | 1.000 | 1518 | | |
| ACF-16-D-X/Y-15 | 1.382-1.632 | 1272-1590 | 1500-2000 | 3 | 4.500 | 3.938 | 4.000 | 4.250 | 0.439 | | 0.625 | 1.125 | 1518 | | |
| ACF-16-D-X/Y-30 | 1.382-1.632 | 1272-1590 | 1500-2000 | 3 | 4.500 | 3.938 | 4.000 | 4.250 | 0.439 | | 0.625 | 1.125 | 1518 | | |
| ACF-16-N | 1.382-1.632 | 1272-1590 | 1500-2000 | 5 | 4.500 | 4.000 | 6.000 | 4.125 | 0.439 | 1.750 | 0.625 | 1.125 | 1518 | | |
| ACF-16-D-X/Y-45 | 1.382-1.632 | 1272-1590 | 1500-2000 | 3 | 6.750 | 4.063 | 4.000 | 4.250 | 0.625 | | 0.625 | 1.125 | 1518 | | |
| *ACF-18-D | 1.632-1.824 | -- | 2000-2500 | 3 | 6.750 | 4.063 | 4.000 | 4.125 | 0.625 | 1.875 | 0.625 | 1.125 | 1706 | | |
| *ACF-18-C | 1.632-1.824 | -- | 2000-2500 | 3 | 7.625 | 4.125 | 3.000 | 3.250 | 0.625 | | 0.625 | 0.625 | 1706 | | |
| *ACF-18-C-Y-90 | 1.632-1.824 | -- | 2000-2500 | 3 | 6.750 | 4.063 | 4.000 | 4.250 | 0.625 | | 0.625 | 1.125 | 1706 | | |
| ACF-18-D-45 | 1.632-1.824 | 2000-2500 | 2000-2500 | 3 | 6.750 | 4.063 | 4.000 | 4.250 | 0.625 | | 0.625 | 1.125 | 1706 | | |
| *ACF-18-D-X/Y-30 | 1.632-1.824 | -- | 2000-2500 | 3 | 6.750 | 4.063 | 4.000 | 4.250 | 0.625 | | 0.625 | 1.125 | 1706 | | |
| ACF-18-K | 1.632-1.824 | 2000-2500 | 2000-2500 | 3 | 6.750 | 4.063 | 5.000 | 5.375 | 0.625 | 1.844 | 0.625 | 1.250 | 1706 | | |
| *ACF-18-C-X/Y-45 | 1.632-1.824 | -- | 2000-2500 | 3 | 6.750 | 4.063 | 3.000 | 3.250 | 0.750 | | 0.625 | 0.063 | 1706 | | |
| *ACF-18-D-Y-90 | 1.632-1.824 | -- | 2000-2500 | 3 | 7.375 | 4.063 | 4.000 | 4.250 | 0.625 | | 0.625 | 1.125 | 1706 | | |
| *ACF-18-D-X/Y-15 | 1.632-1.824 | -- | 2000-2500 | 3 | 6.750 | 4.063 | 4.000 | 4.250 | 0.625 | | 0.625 | 1.125 | 1706 | | |
| ACF-18-D-AEP | 1.632-1.824 | -- | 2000-2500 | 3 | 6.750 | 4.063 | 4.000 | 4.125 | 0.625 | 1.875 | 0.625 | 1.000 | 1706 | | |
| *ACF-21-C | 1.824-2.000 | -- | 2500-3000 | 3 | 7.500 | 4.500 | 3.000 | 4.000 | 0.750 | 2.063 | 0.625 | 0.625 | 1706 | | |
| *ACF-21-D | 1.824-2.000 | -- | 2500-3000 | 3 | 7.500 | 4.500 | 4.000 | 4.250 | 0.750 | 2.063 | 0.625 | 1.125 | 1706 | | |
| *ACF-21-D-X/Y-90 | 1.824-2.000 | -- | 2500-3000 | 3 | 8.250 | 4.500 | 4.000 | 4.250 | 0.750 | | 0.625 | 1.125 | 1706 | | |
| **ACF-22-C | 2.000-2.200 | -- | -- | 3 | 10.000 | 4.688 | 3.000 | 3.000 | 1.000 | 2.313 | 0.625 | 0.625 | 1706 | | |
| **ACF-22-C-X/Y-90 | 2.000-2.200 | -- | -- | 3 | 11.000 | 4.688 | 3.000 | 3.250 | 1.000 | | 0.625 | 0.625 | 1706 | | |
| **ACF-22-D | 2.000-2.200 | -- | -- | 3 | 10.000 | 4.688 | 4.000 | 4.250 | 1.000 | 2.375 | 0.625 | 1.125 | 1706 | | |
| **ACF-24-D | 2.300-2.400 | -- | -- | 3 | 10.000 | 5.000 | 4.000 | 4.250 | 1.000 | 2.500 | 0.625 | 1.125 | 1706 | | |

CATALOG NUMBER: ACF FAMILY (SEE TABLE)
 PART / ASSY NO. SEE TABLE
 SIZE C-4183
 REV 49
 SCALE: NS
 DRN BY: VJDS
 DATE: 7/24/57
 SHEET 5 OF 5
 1 UNCONTROLLED COPY WHEN PRINTED

