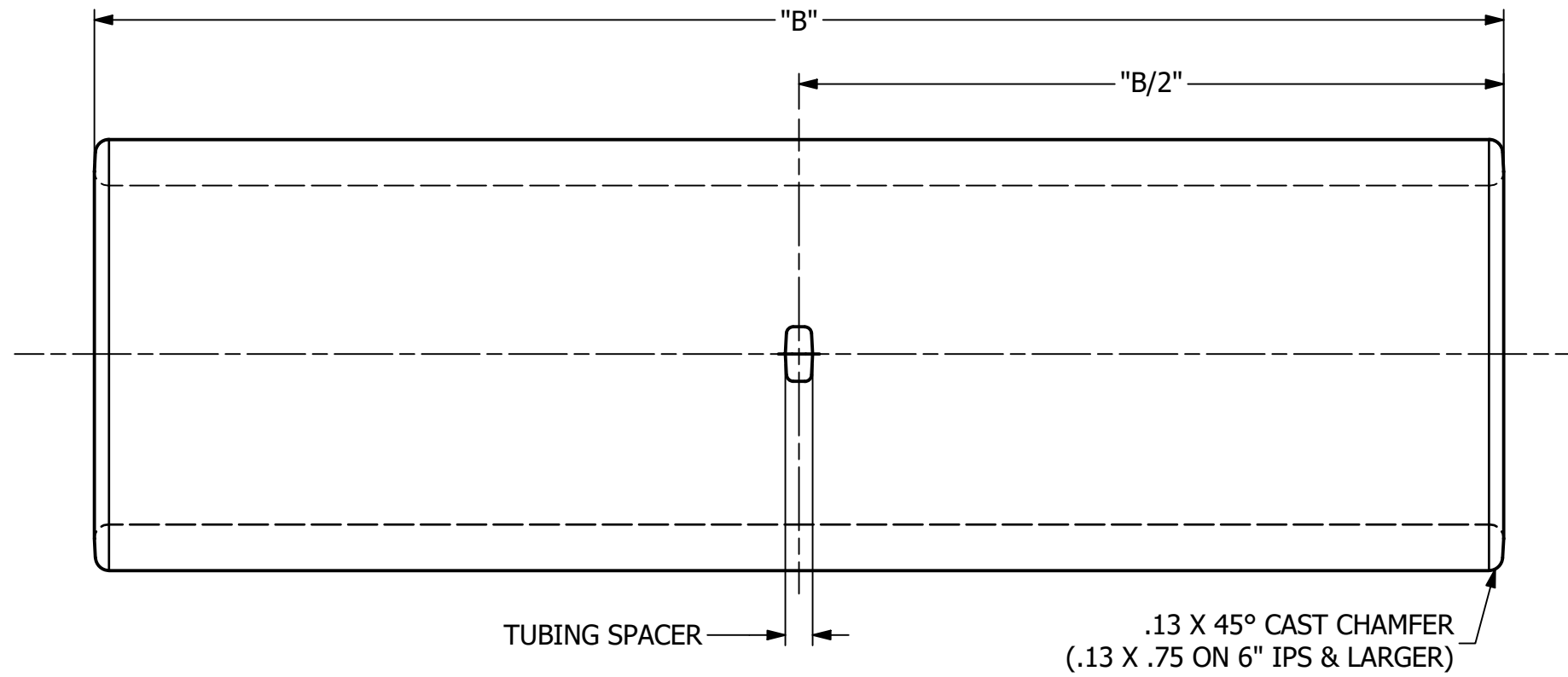
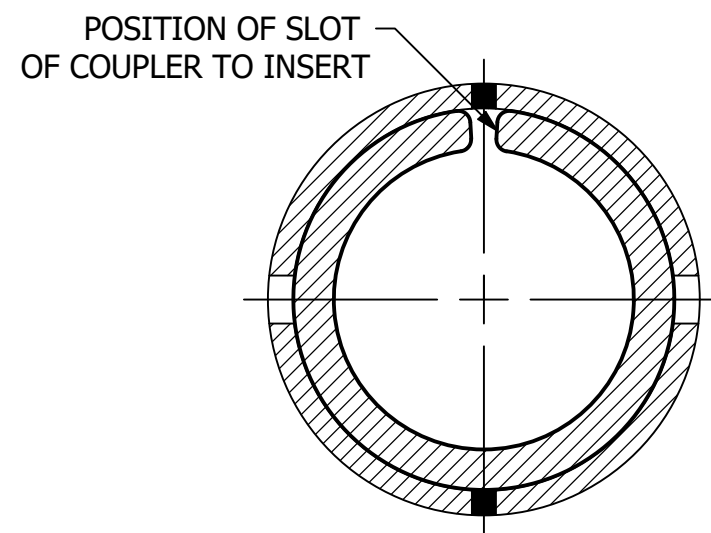
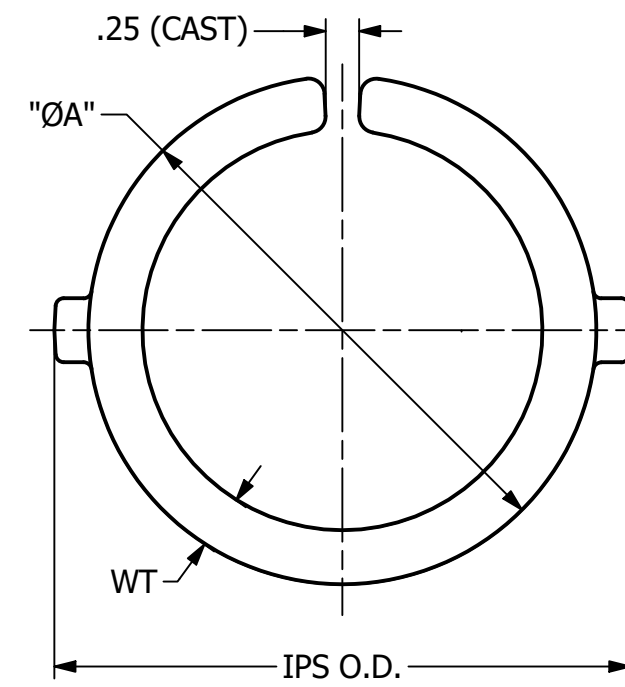


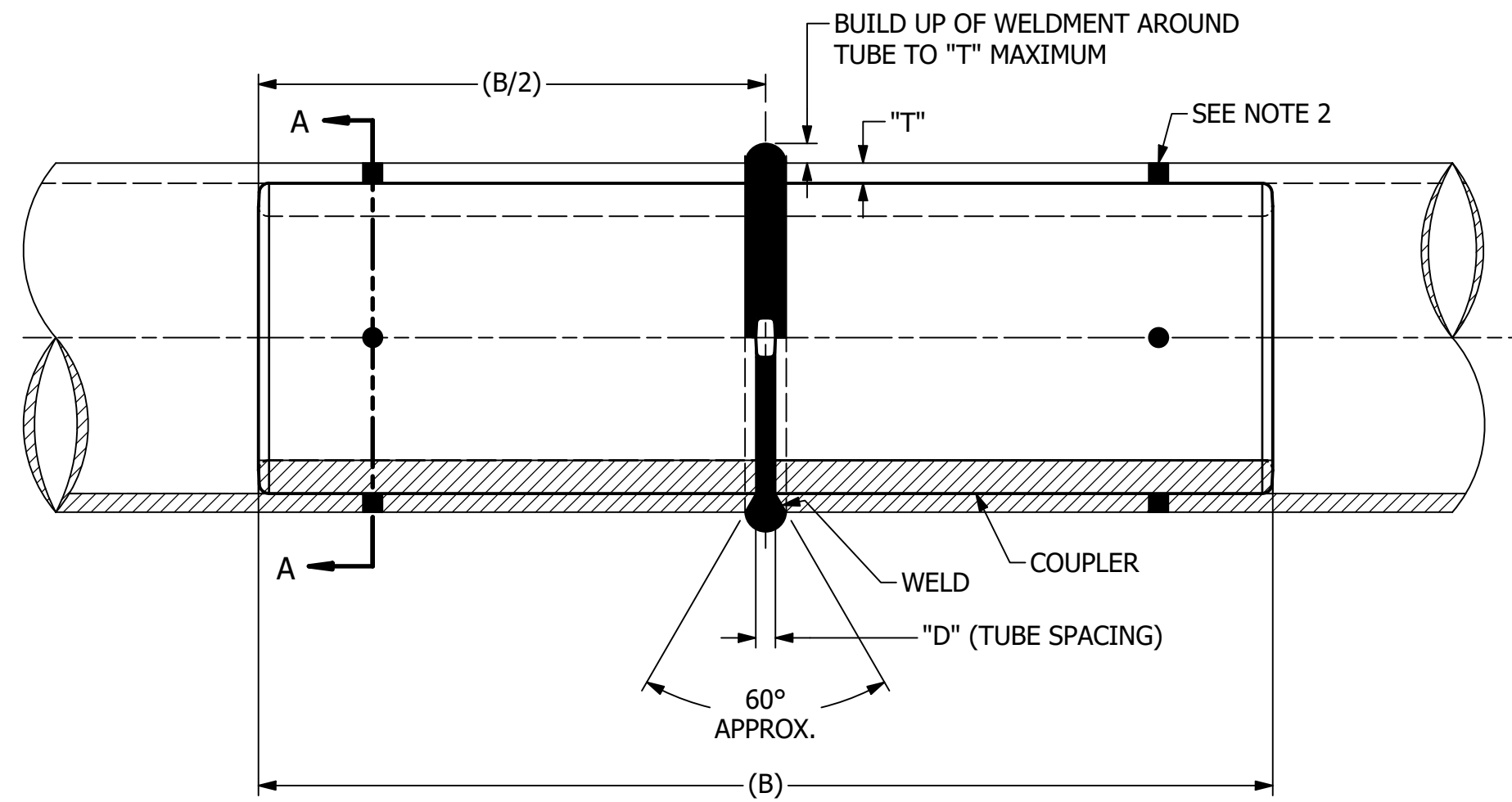
CATALOG NUMBER	IPS SIZE	A	B	D	WT
WCI0606	3/4"	.78	4.50	.13	--
WCI1010	1"	1.00	7.50	.13	.18
WCI1212	1 1/4"	1.34	7.50	.13	.27
WCI1414	1 1/2"	1.56	9.00	.13	.25
WCI2020	2"	2.00	12.0	.25	.25
WCI2424	2 1/2"	2.41	15.0	.25	.25
WCI3030	3"	3.00	18.0	.25	.25
WCI3434	3 1/2"	3.47	18.0	.25	.30
WCI4040	4 1/2"	3.97	12.9	.25	.42
WCI5050	5"	4.97	24.0	.25	.38
WCI6060	6"	6.00	24.0	.25	.34



**COUPLER DETAIL**



**SECTION A-A**



**ASSEMBLY DETAIL**

**NOTES:**

1. MATERIAL: CASTING A356-T6 STRONTIUM MODIFIED.
2. PLUG WELDS MAY BE ADDED TO PROVIDE MAXIMUM STIFFNESS TO JOINT.
3. FOR DRIVE FIT APPLICATION, .25" CAST SLOT MAY BE SPREAD TO SUIT 10 TUBULAR BUS.
4. ALL DIMENSIONS IN INCHES.

230822032834	08/22/23	Ak	CJ	PTB
EC #	DATE	CHANGED BY	CHECKED BY	APPROVED BY
				WEIGHT, LBS
				--
DESCRIPTION:				
REDRAWN IN NVENTOR				
UPDATED WCI4040 DETAILS AS PER PP-14545				
--				
--				
--				
ADDITIONAL COMMENTS: --				

THIRD ANGLE PROJECTION

CONFIDENTIAL: THIS DRAWING AND ITS CONTENTS ARE CONFIDENTIAL AND THE EXCLUSIVE PROPERTY OF HUBBELL POWER SYSTEMS. NO PUBLICATION, DISTRIBUTION OR COPIES MAY BE MADE WITHOUT THE WRITTEN CONSENT OF HUBBELL POWER SYSTEMS. HUBBELL POWER SYSTEMS UNPUBLISHED ALL RIGHTS RESERVED UNDER THE COPYRIGHT LAWS

**HUBBELL POWER SYSTEMS, Inc.**

TITLE: **WELDED COUPLER (INTERNAL) TUBULAR TYPE FOR TUBULAR BUS**

CATALOG NUMBER: SEE TABLE

SIZE	DWG NO.	PART / ASSY NO.	REV
C	C-4940	--	20

SCALE: 2 : 3    DRN BY: KH    DATE: 09/10/62    SHEET 1 OF 1