

CATALOG NUMBER	TYPE OF FITTING	CONDUCTOR RANGE (MIN - MAX)	FIG NO.	ULT. BODY STRENGTH	ULT. SAG EYE STRENGTH	DIM A	DIM B	DIM C	DIM J	DIM K	NO OF U BOLTS	APPROX. WT. EACH LB. [KG]
MDE40S	SOCKET	0.160 - 0.400 [4.06 - 10.16]	2	5000 [22.24]	5000 [22.24]	6.188 [157.18]	2.813 [71.45]	.813 [20.65]	1/2 [12.70]	7/8 [22.23]	1	4.1 [1.86]
MDE40C	CLEVIS											3.6 [1.63]
MDE40N	NONE											2.1 [0.95]
MDE46S	SOCKET	0.180 - 0.460 [4.57 - 11.68]	1	6000 [26.69]	5000 [22.24]	7.500 [190.50]	2.813 [71.45]	0.750 [23.81]	3/8 [9.53]	7/8 [22.23]	2	4.1 [1.86]
MDE46C	CLEVIS											4.0 [1.81]
MDE46N	NONE											2.9 [1.32]
MDE60S	SOCKET	0.360 - 0.600 [9.14 - 15.24]	1	8000 [35.59]	6000 [26.69]	8.938 [227.03]	3.813 [96.85]	0.750 [23.81]	1/2 [12.70]	7/8 [22.23]	2	4.1 [1.86]
MDE60C	CLEVIS											4.1 [1.86]
MDE60N	NONE											3.8 [1.72]

ITEM	DESCRIPTION	MATERIAL
1	BODY	GALV. DUCTILE IRON
2	KEEPER	GALV. DUCTILE IRON
3	CLEVIS PIN	GALV. DUCTILE IRON
4	COTTER PIN	STAINLESS STEEL
5	U-BOLT	GALV. STEEL
6	WASHER	GALV. STEEL
7	NUT	GALV. STEEL

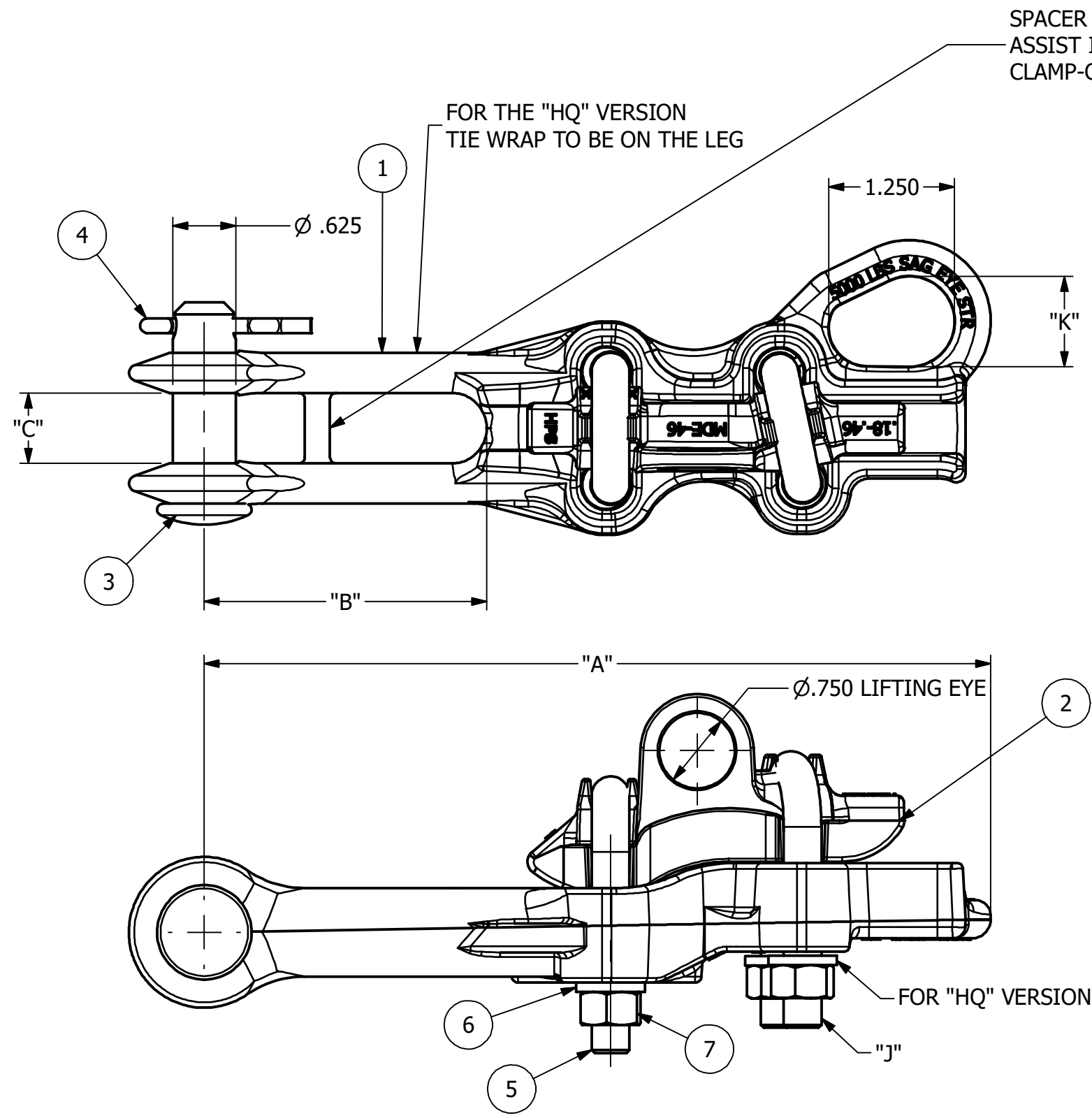


FIGURE 1

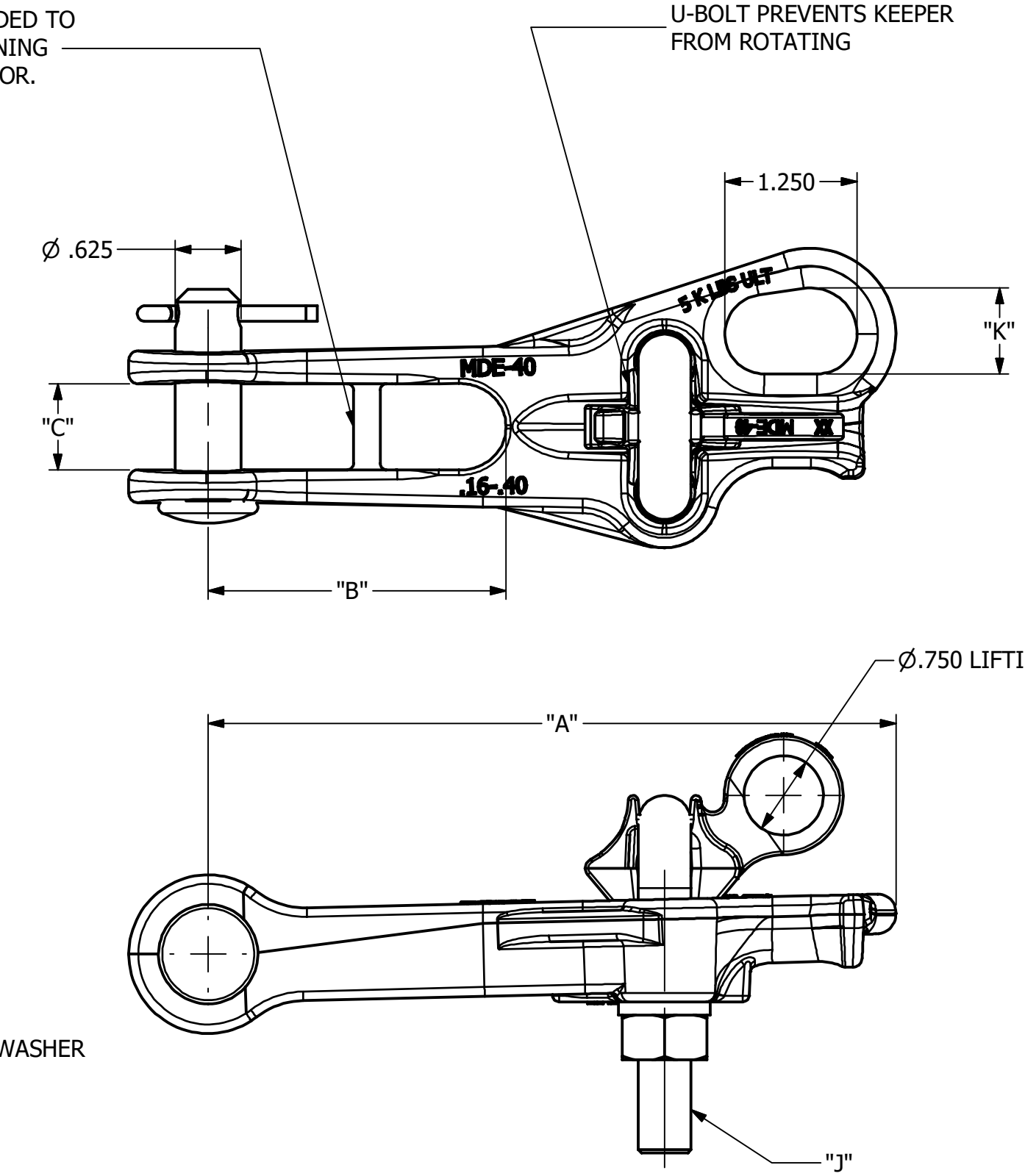
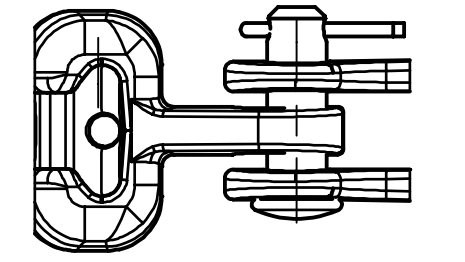
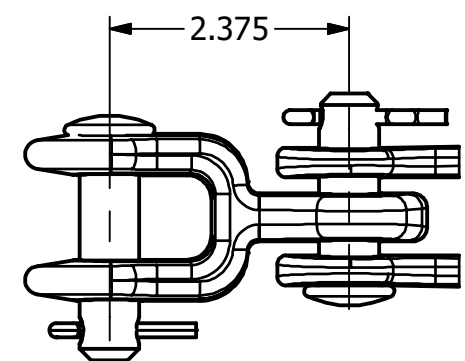


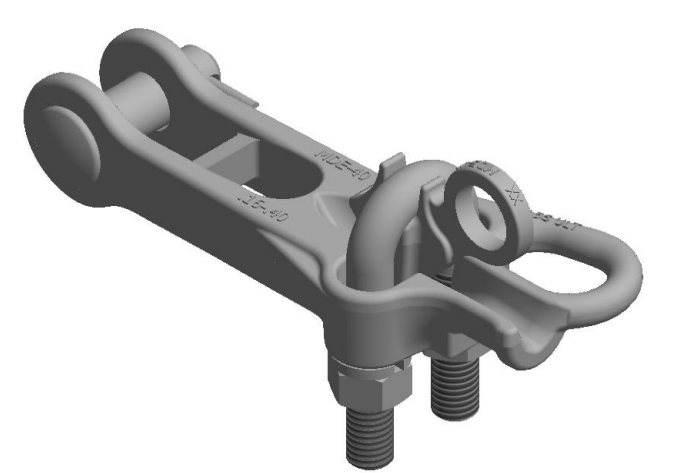
FIGURE 2



SOCKET FITTING (TYPE SA)



CLEVIS FITTING (TYPE CA)



- NOTES:
- ALL DIMENSIONS FOR REFERENCE ONLY. DISTANCE IN. [MM], FORCE: LBS-Force [kN], TORQUE IN. LBS. [N.m], & WEIGHT LBS. [KG].
 - RATINGS:
 - RECOMMENDED TORQUE ON BOLTS: 3/8"- 240 [27], 1/2"- 480 [54].
 - CERTIFICATIONS, SPECIFICATIONS & STANDARDS:
 - *RUS LISTED
 - THESE CLAMPS ARE RECOMMENDED FOR ALL ALUMINUM, COPPER AND ACSR CABLE. LINERS ARE NOT REQUIRED.
 - CLAMP BODY AND KEEPER ARE GALVANIZED 654512 DUCTILE IRON ALLOY, SOCKET AND CLEVIS ARE 654512 DUCTILE IRON ALLOY, HOT DIP GALVANIZED STEEL. LOCK WASHERS MAYBE MECHANICAL PLATED OR HOT DIP GALVANIZED STEEL.
 - FOR HEX PIN ADD "HP" TO PART NUMBER (FOR EG. MDE46NHP).
 - FOR HYDRO QUEBEC VERSION , GALVANIZED PER CSA G164, ADD BLACK TIE WRAP AND FLAT WASHER. ADD SUFFIX "HQ" TO CATALOG NUMBER.FOR EG. MDE46NHQ

230105026697	1/5/23	BM	SP	SI
EC #	DATE	CHANGED BY	CHECKED BY	APPROVED BY
DESCRIPTION: REDRAWN IN INVENTOR				WEIGHT, LBS SEE TABLE
ADDITIONAL COMMENTS: --				

THIRD ANGLE PROJECTION

CONFIDENTIAL: THIS DRAWING AND ITS CONTENTS ARE CONFIDENTIAL AND THE EXCLUSIVE PROPERTY OF HUBBELL POWER SYSTEMS. NO PUBLICATION, DISTRIBUTION OR COPIES MAY BE MADE WITHOUT THE WRITTEN CONSENT OF HUBBELL POWER SYSTEMS. HUBBELL POWER SYSTEMS UNPUBLISHED ALL RIGHTS RESERVED UNDER THE COPYRIGHT LAWS

HUBBELL POWER SYSTEMS, Inc.

TITLE: **STRAIGHT DEAD-END STRAIN CLAMP TYPE MDE**

CATALOG NUMBER: **SEE TABLE**

SIZE C	DWG NO. C-5212	PART / ASSY NO. SEE TABLE	REV 19
-----------	-------------------	------------------------------	-----------

SCALE: 2 : 3 DRN BY: PKC DATE: 10/09/63 SHEET 1 OF 1