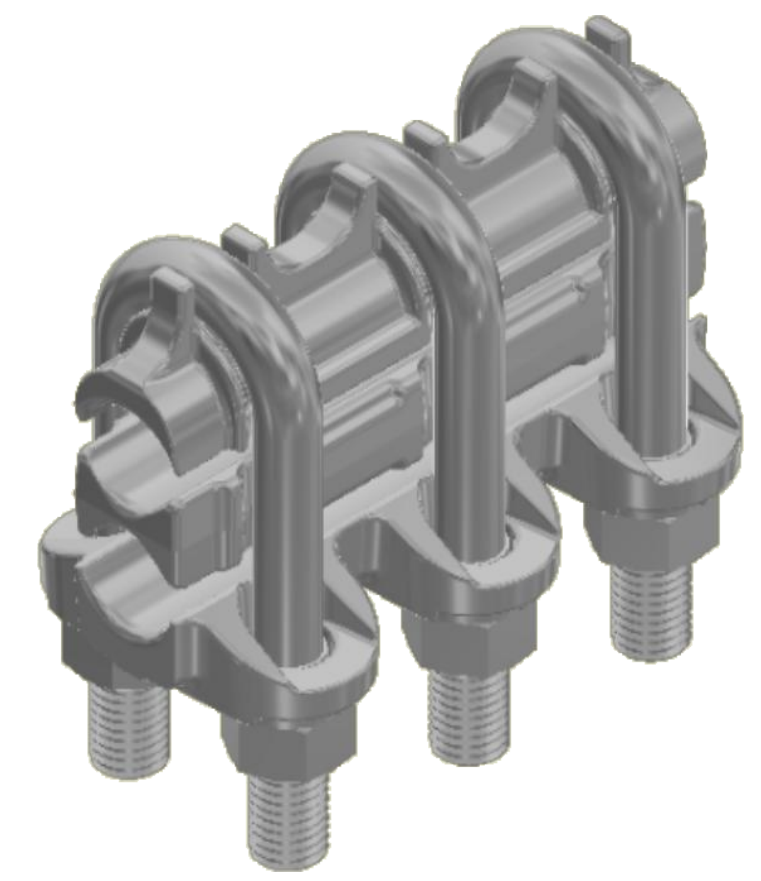
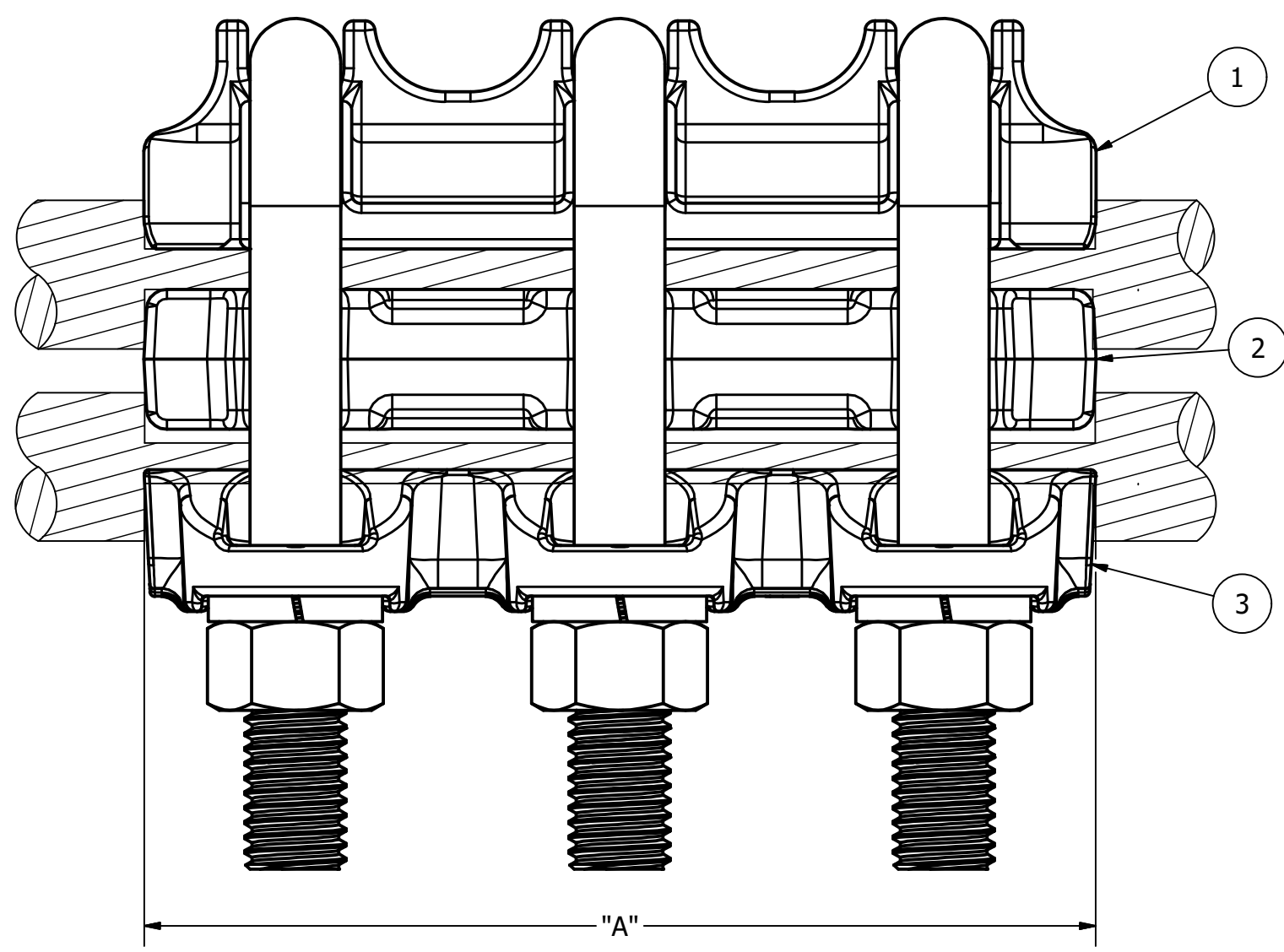
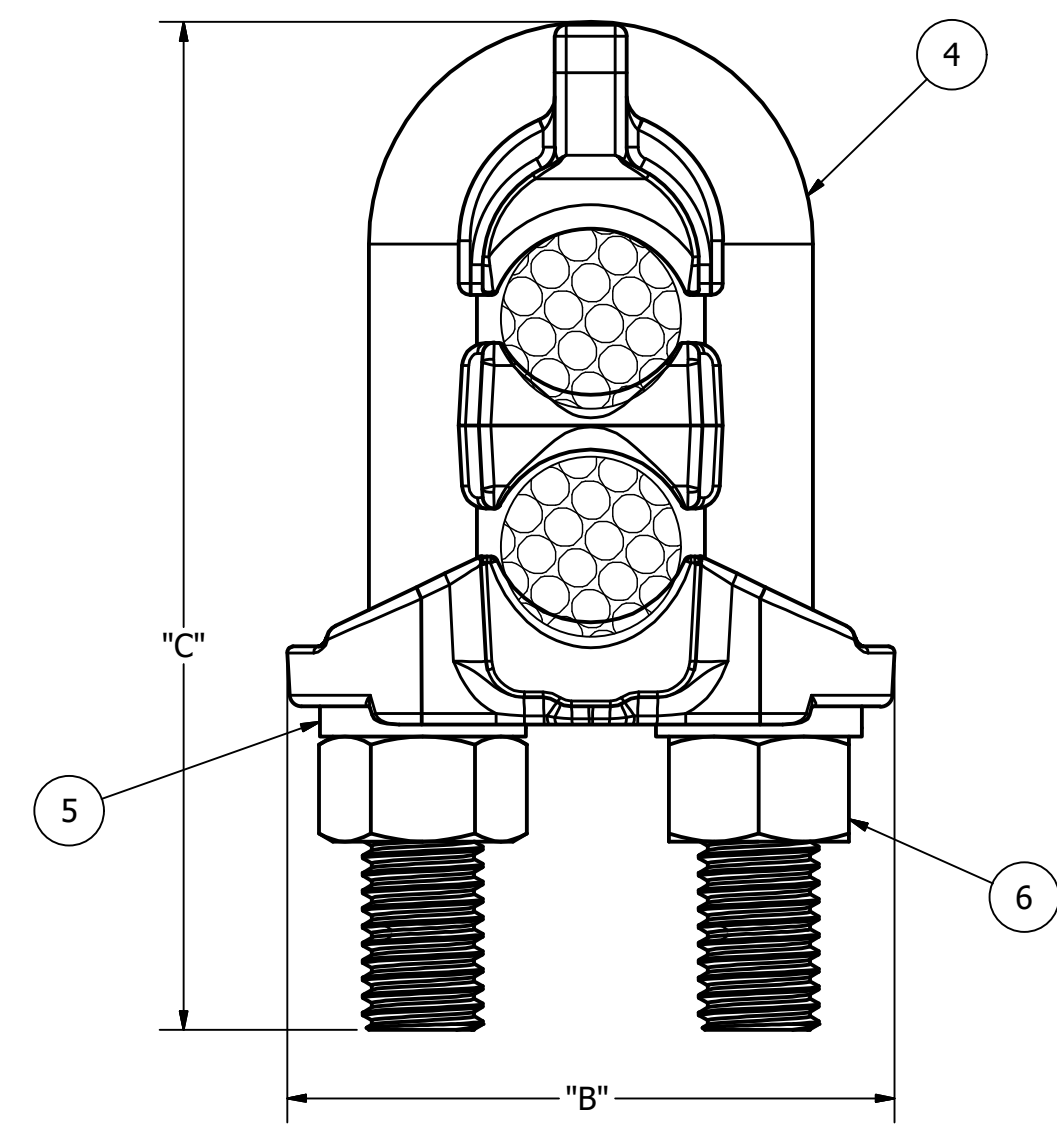


CATALOG NUMBER	AAC CONDUCTOR RANGE MAIN (MIN. - MAX.)	ACSR CONDUCTOR RANGE MAIN (MIN. - MAX.)	AAC CONDUCTOR RANGE TAP (MIN. - MAX.)	ACSR CONDUCTOR RANGE TAP (MIN. - MAX.)	DIM A	DIM B	DIM C	HARDWARE	APPROX. WT. EACH LB. [KG]	STANDARD PACK
LCU70055	450-800 MCM	397.5-715.5 MCM	450-800 MCM	397.5-715.5 MCM	5.875 [149.23]	3.125 [79.38]	4.688 [119.06]	5/8"	2.87 [1.30]	10
LCU70063	750-1033.5 MCM	605-900 MCM	4/0 Sol. - 350 MCM	3/0 - 336.4 [18/1]	6.750 [171.45]	3.313 [84.14]	5.125 [130.18]	5/8"	3.25 [1.47]	6
LCU70064	750-1033.5 MCM	605-900 MCM	350-477 MCM	336.4-397.5 MCM	6.750 [171.45]	3.313 [84.14]	5.125 [130.18]	5/8"	3.25 [1.47]	12
LCU70065	750-1033.5 MCM	605-900 MCM	450-715.5 MCM	397.5 - 605 MCM	6.750 [171.45]	3.313 [84.14]	5.125 [130.18]	5/8"	3.50 [1.59]	12
LCU70066	750-1033.5 MCM	605-900 MCM	750-1033.5 MCM	605-900 MCM	6.750 [171.45]	3.313 [84.14]	5.500 [139.70]	5/8"	3.50 [1.59]	12
LCU70074	1113-1351.5 MCM	954-1192.5 MCM	350-477 MCM	336.4-397.5 MCM	8 [203.20]	3.875 [98.43]	6 [152.40]	3/4"	6.35 [2.88]	8
LCU70075	1113-1351.5 MCM	954-1192.5 MCM	450-715.5 MCM	397.5-605 MCM	8 [203.20]	3.875 [98.43]	6 [152.40]	3/4"	6.50 [2.95]	8
LCU70076	1113-1351.5 MCM	954-1192.5 MCM	750-1033.5 MCM	605-900 MCM	8 [203.20]	3.875 [98.43]	6 [152.40]	3/4"	6.50 [2.95]	10
LCU70077	1113-1351.5 MCM	954-1192.5 MCM	1113-1351.5 MCM	954-1192.5 MCM	8 [203.20]	3.875 [98.43]	6.375 [161.93]	3/4"	6.50 [2.95]	10
LCU70085	1431-1750 MCM	1272-1590 MCM	450-715.5 MCM	397.5 - 605 MCM	9.750 [231.78]	4.125 [104.78]	5.750 [146.05]	3/4"	8.50 [3.86]	6
LCU70086	1431-1750 MCM	1272-1590 MCM	750-1033.5 MCM	605-900 MCM	9.750 [231.78]	4.125 [104.78]	6.375 [161.93]	3/4"	8.50 [3.86]	7
LCU70087	1431-1750 MCM	1272-1590 MCM	1113-1351.5 MCM	954-1192.5 MCM	9.750 [231.78]	4.125 [104.78]	6.375 [161.93]	3/4"	8.75 [3.97]	5
LCU70088	1431-1750 MCM	1272-1590 MCM	1431-1750 MCM	1272-1590 MCM	9.750 [231.78]	4.125 [104.78]	6.375 [161.93]	3/4"	8.75 [3.97]	10
LCU7001006	2000-2500 MCM	1780-2156 MCM	750-1033.5 MCM	605-900 MCM	10 [254.0]	4.375 [111.12]	7 [177.8]	3/4"	7.85 [3.53]	4
LCU7001007	2000-2500 MCM	1780-2156 MCM	1113-1351.5 MCM	954-1192.5 MCM	10 [254.0]	4.375 [111.12]	7 [177.8]	3/4"	7.85 [3.53]	--
LCU7001010	2000-2500 MCM	1780-2156 MCM	2000-2500 MCM	1780-2156 MCM	10 [254.0]	4.375 [111.12]	7 [177.8]	3/4"	6.85 [3.08]	--

ITEM	DESCRIPTION	MATERIAL
1	TOP	ALUMINUM
2	BOTTOM	ALUMINUM
3	MIDDLE	ALUMINUM
4	U-BOLT	ALUMINUM
5	WASHER	ALUMINUM
6	NUT	ALUMINUM



NOTES:

- ALL DIMENSIONS FOR REFERENCE ONLY IN. [MM], FORCE LBS [KN], TORQUE IN. LBS [N.M] & WEIGHT LBS. [KG].
- RATINGS:
 - RECOMMENDED TORQUE: 5/8 HARDWARE - 660 IN.LBS [74.57]
3/8 HARDWARE - 240 IN.LBS [27.12]
- CERTIFICATIONS, SPECIFICATIONS & STANDARDS:
 - NA
- A SUFFIX IS ADDED TO THE CATALOG NUMBER TO DESIGNATE THE REQUIRED FITTINGS AS SHOWN IN THE TABULATION (EXAMPLE: LCU70055XB):
 - "XB" - FACTORY INHIBITED AND BAGGED

78276	04/17/2019	AD	SD	HPS.	HUBBELL® POWER SYSTEMS POWER SYSTEMS, INC.			
EC #	DATE	CHG BY	RESP ENG					
DESC OF DWG: DRAWING CREATED IN INVENTOR				CONFIDENTIAL: THIS DRAWING AND ITS CONTENTS ARE CONFIDENTIAL AND THE EXCLUSIVE PROPERTY OF HUBBELL POWER SYSTEMS. NO PUBLICATION, DISTRIBUTION OR COPIES MAY BE MADE WITHOUT THE WRITTEN CONSENT OF HUBBELL POWER SYSTEMS. HUBBELL POWER SYSTEMS UNPUBLISHED ALL RIGHTS RESERVED UNDER THE COPYRIGHT LAWS	TITLE CONNECTOR PARALLEL GROOVE, TYPE LCU7XX			
REASON (S) FOR CHANGE: DISPOSITION OF MAT'L:					<table border="1"> <tr> <td>SIZE C</td> <td>DWG NO. C-6439</td> <td>CAT / PART / ASSY NO. SEE CHART</td> <td>REV 06</td> </tr> </table>	SIZE C	DWG NO. C-6439	CAT / PART / ASSY NO. SEE CHART
SIZE C	DWG NO. C-6439	CAT / PART / ASSY NO. SEE CHART	REV 06					
				DO NOT SCALE THIS DRAWING	DRN BY PKC			
				DATE 08/23/65	SHEET 1 OF 1			