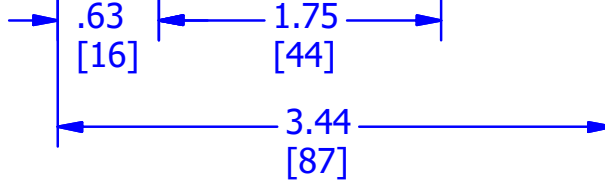
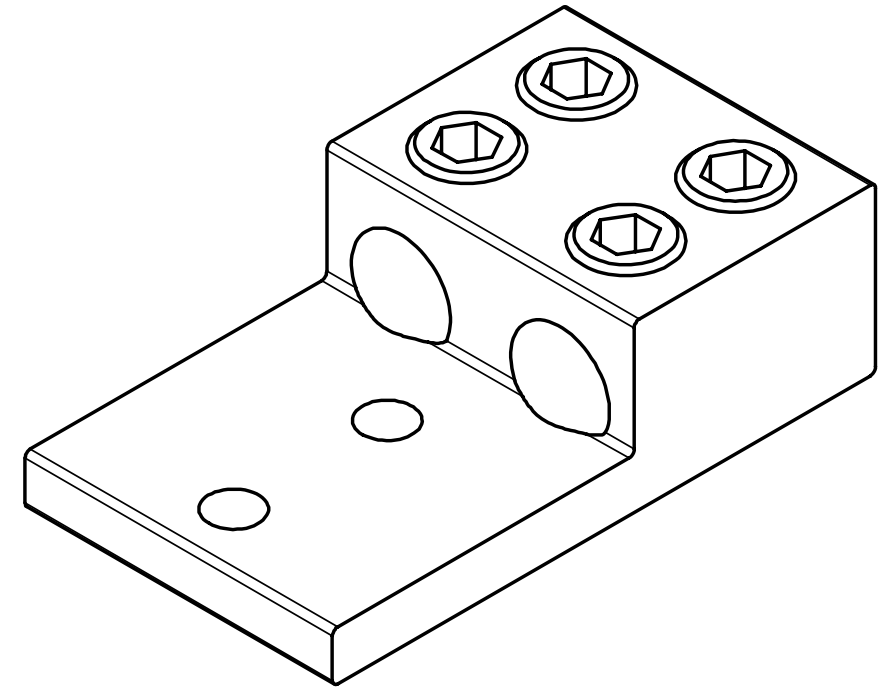
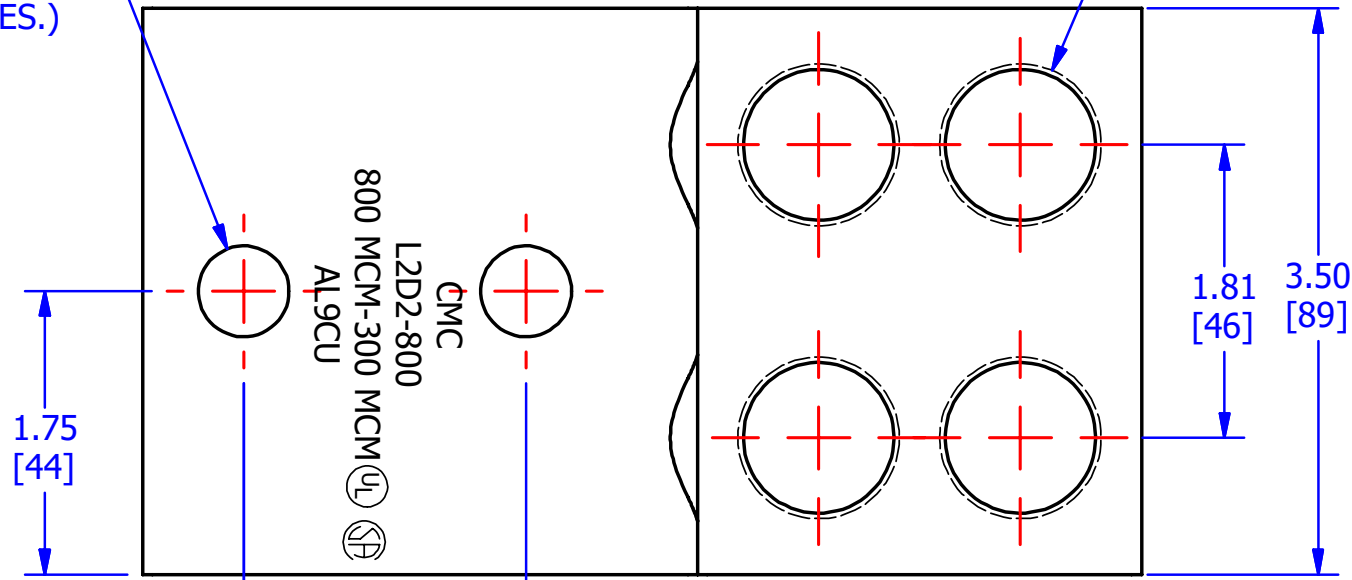
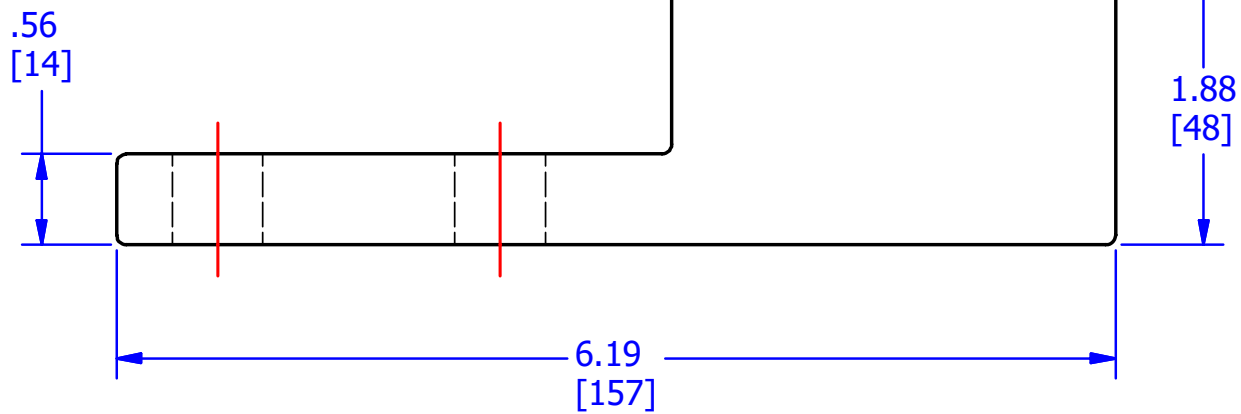
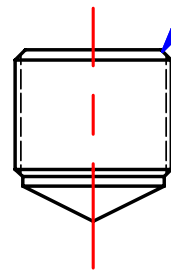


DIA .56  
[14]  
(2 PLACES.)

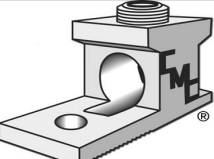
TAP 1-16  
(4 PLACES)



SCREWS ARE SUPPLIED WITH  
CONNECTOR AND COMES  
FULLY ASSEMBLED.



FINISH: TIN PLATED  
MATERIAL: ALUMINUM

					TO ORDER CMC PRODUCTS	DRAWN BY:	NAME OF PART:	CAT. NO.:	
					UNITED STATES 1-513-860-4455	02-09-17	2 BARREL LUG	L2D2-800	
					CANADA 1-800-361-6975	CHECKED BY:	DWG NO:	A	
					MEXICO 011-52-722-265-4400		C00494035-S		
A	NEW DRWAING CREATED			02-09-17	FOR PRODUCT INFO www.cmclugs.com	DRAWING NOT TO SCALE		SHEET NO: 1 OF 1	

THIS INFORMATION IS PROPRIETARY TO CONNECTOR MFG. CO. AND IS NOT TO BE DISCLOSED OUTSIDE OF CONNECTOR MFG. CO. WITHOUT A CONFIDENTIALITY AGREEMENT



**CONNECTOR MANUFACTURING CO.**

HAMILTON, OHIO