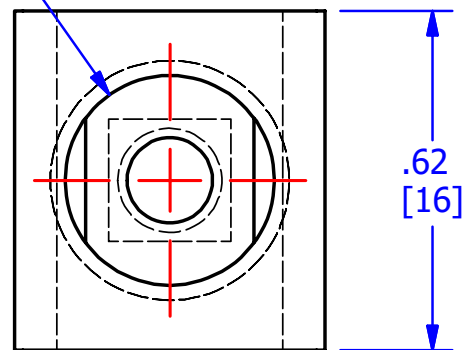
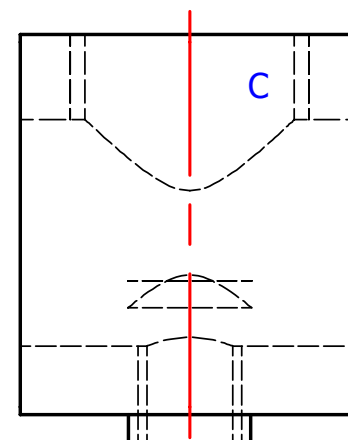
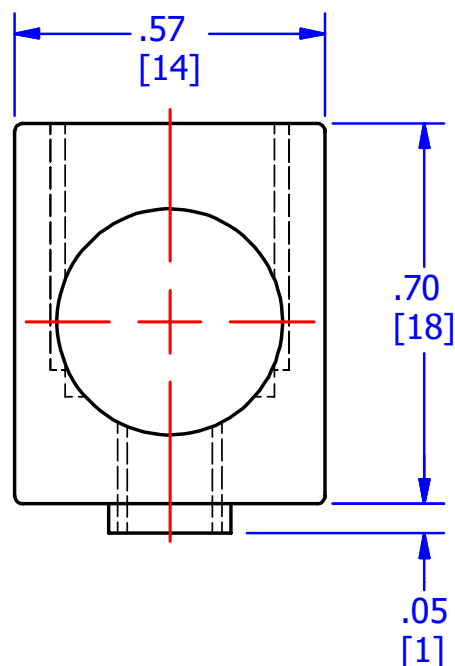
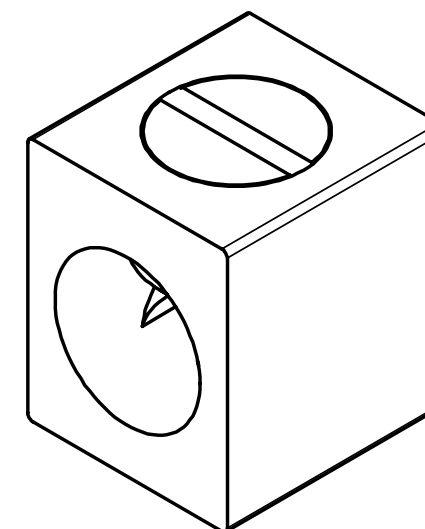
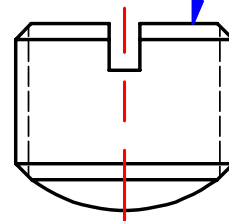


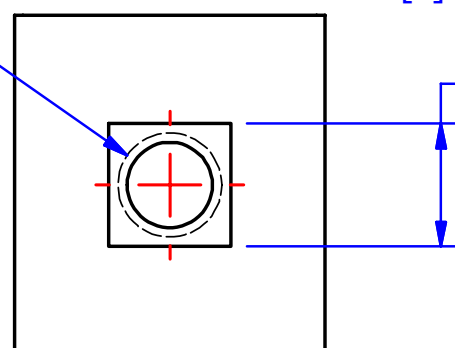
TAP 7/16-20 UNF



SCREWS ARE SUPPLIED WITH  
CONNECTOR AND COMES  
FULLY ASSEMBLED.



TAP #10-32 UNF



.22  
[6]  
SQUARE BOSS

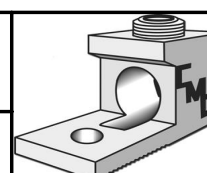
CONDUCTOR SIZE: 1/0-14 AWG  
FINISH: TIN PLATE  
MATERIAL: ALUMINUM

					TO ORDER CMC PRODUCTS CALL 1-513-860-4455  FOR PRODUCT INFO: <a href="http://www.cmclugs.com">http://www.cmclugs.com</a>	DRAWN BY: TS 03/15/18	NAME OF PART: COLLAR ASSEMBLY	CAT. NO.: CA-110-S
						CHECKED BY:	DWG NO: C05496016-S	A
						DRAWING NOT TO SCALE		SHEET NO: 1 OF 1
REV.	DESCRIPTION	ECN	DATE	INIT.				
	NEW DRAWING CREATED		03/15/18	TS				

THIS INFORMATION IS PROPRIETARY TO CONNECTOR MFG. CO. AND IS NOT TO BE  
DISCLOSED OUTSIDE OF CONNECTOR MFG. CO. WITHOUT A CONFIDENTIALITY AGREEMENT



**CONNECTOR MANUFACTURING CO.**



HAMILTON, OHIO