

FIG.# 1

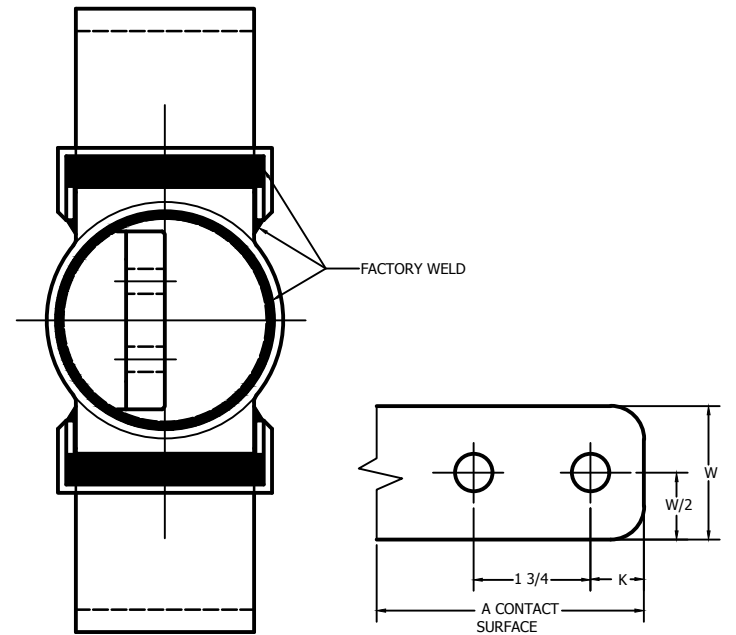
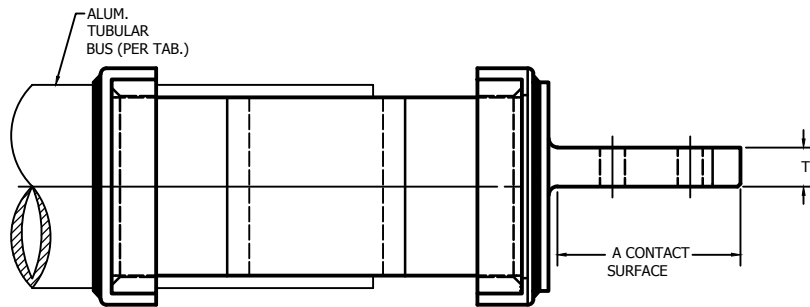


FIG.# 2




NOTES:

1. MATERIAL: CASTINGS: 356-T6 ALUMINUM ALLOY
STRAPS: 1100-0 ALUMINUM ALLOY
2. FOR EHIPS (SCHEDULE 80) APPLICATION ADD "H"
TO CATALOG NO. (EXAMPLE: WFTFVH-30-D)
3. TO OBTAIN TONGUE FINISHED ON BOTH SIDE
ADD "XY" TO CATALOG NO. (EXAMPLE: WFTFV-50-D-XY)
4. DETERMINE "T" DIMENSION FROM DRAWING DC-9295.
5. MAXIMUM BUS LENGTH IS 140 FEET.

65653	05/18/16	VV	DR	HPS®		HUBBELL® POWER SYSTEMS TITLE EXPANSION TERMINAL CONNECTOR ALUM. TUBE TO FLAT	SIZE	DWG NO.	CAT / PART / ASSY NO.	REV		
EC #	DATE	CHG BY	RESP ENG				C	CC-12922	SEE TAB	5		
DESC OF DWG: REDRAWN IN AUTOCAD				<small>CONFIDENTIAL: THIS DRAWING AND ITS CONTACTS ARE CONFIDENTIAL AND THE EXCLUSIVE PROPERTY OF HUBBELL POWER SYSTEMS. NO PUBLICATION, DISTRIBUTION OR COPIES MAY BE MADE WITHOUT THE WRITTEN CONSENT OF HUBBELL POWER SYSTEMS. ALL RIGHTS RESERVED UNDER THE COPYRIGHT LAWS</small>		DO NOT SCALE THIS DRAWING	DRN BY	HDY	DATE	12-28-83	SHEET	1 OF 2
REASON (S) FOR CHANGE: DISPOSITION OF MAT'L:												

CATALOG NUMBER	IPS SIZE	FIG. NO.	DIMENSIONS IN INCHES							
			A	B	C	D	K	L	T	W
WFTFV-14-C	1 1/2	1	3 1/8	11	4 5/8	5	5/8	13 1/8	1/2	3
WFTFV-20-B2	2	2	3 1/8	11	4 1/2	5	5/8	13	1/2	2
WFTFV-20-C	2	1	3 1/8	11	4 1/2	5	5/8	13	1/2	3
WFTFV-20-D	2	1	4 1/8	11	4 1/2	6	1 1/8	14	3/8	4
WFTFV-24-C	2 1/2	1	3 1/8	11 1/2	4 5/8	5	5/8	13 1/8	5/8	3
WFTFV-24-D	2 1/2	1	4 1/8	11 1/2	4 5/8	6	1 1/8	14 1/8	1/2	4
WFTFV-30-C	3	1	3 1/8	12 7/8	4 7/8	5	5/8	13 3/8	3/4	3
WFTFV-30-D	3	1	4 1/8	12 7/8	4 7/8	6	1 1/8	14 3/8	5/8	4
WFTFV-34-D	3 1/2	1	4 1/8	13	4 5/8	6	1 1/8	14 1/8	3/4	4
WFTFV-40-B2	4	2	3 1/8	14	4 7/8	5	5/8	13 3/8	7/8	2
WFTFV-40-C	4	1	3 1/8	14	4 7/8	5	5/8	13 3/8	7/8	3
WFTFV-40-D	4	1	4 1/8	14	4 7/8	6	1 1/8	14 3/8	7/8	4
WFTFV-50-D	5	1	4 1/8	15 1/8	5 1/8	6	1 1/8	14 3/4	1	4
WFTFV-60-D	6	1	4 1/2	17 1/8	5 3/8	6	1 1/8	15	1	4

XX	05/18/16	VV	DR	HPS®	 HUBBELL® POWER SYSTEMS
EC #	DATE	CHG BY	RESP ENG		
DESC OF DWG: REDRAWN IN AUTOCAD				CONFIDENTIAL: THIS DRAWING AND ITS CONTENTS ARE CONFIDENTIAL AND THE EXCLUSIVE PROPERTY OF HUBBELL POWER SYSTEMS. NO PUBLICATION, DISTRIBUTION OR COPIES MAY BE MADE WITHOUT THE WRITTEN CONSENT OF HUBBELL POWER SYSTEMS. HUBBELL POWER SYSTEMS UNPUBLISHED ALL RIGHTS RESERVED UNDER THE COPYRIGHT LAWS	TITLE EXPANSION TERMINAL CONNECTOR ALUM. TUBE TO FLAT
REASON (S) FOR CHANGE: DISPOSITION OF MAT'L:					SIZE C
				DO NOT SCALE THIS DRAWING	CAT / PART / ASSY NO. SEE TAB
				DRN BY HDY	REV 5
				DATE 12-28-83	SHEET 2 OF 2