

4

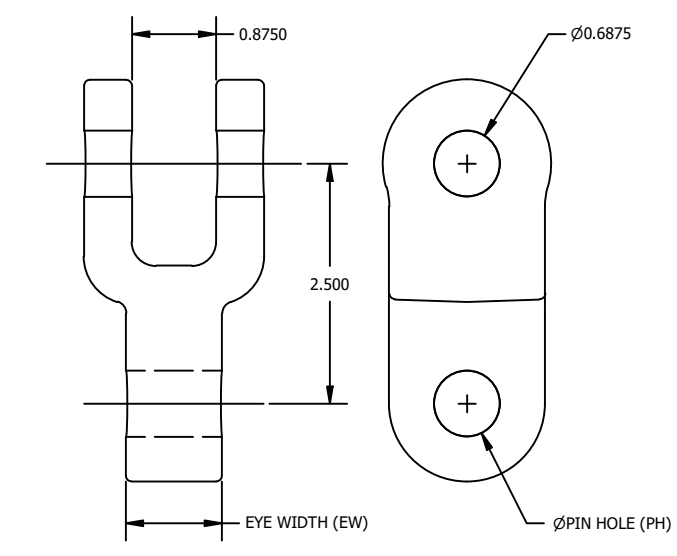
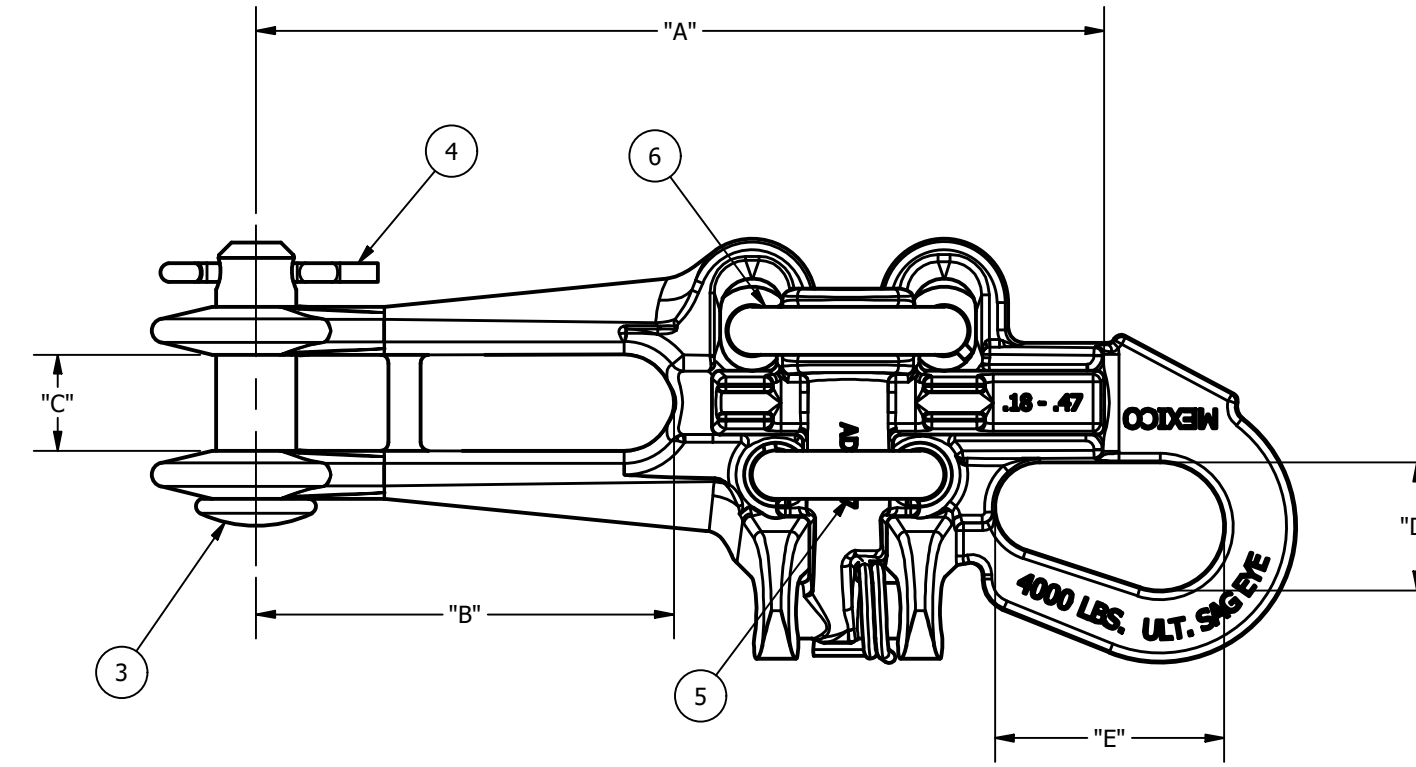
3

2

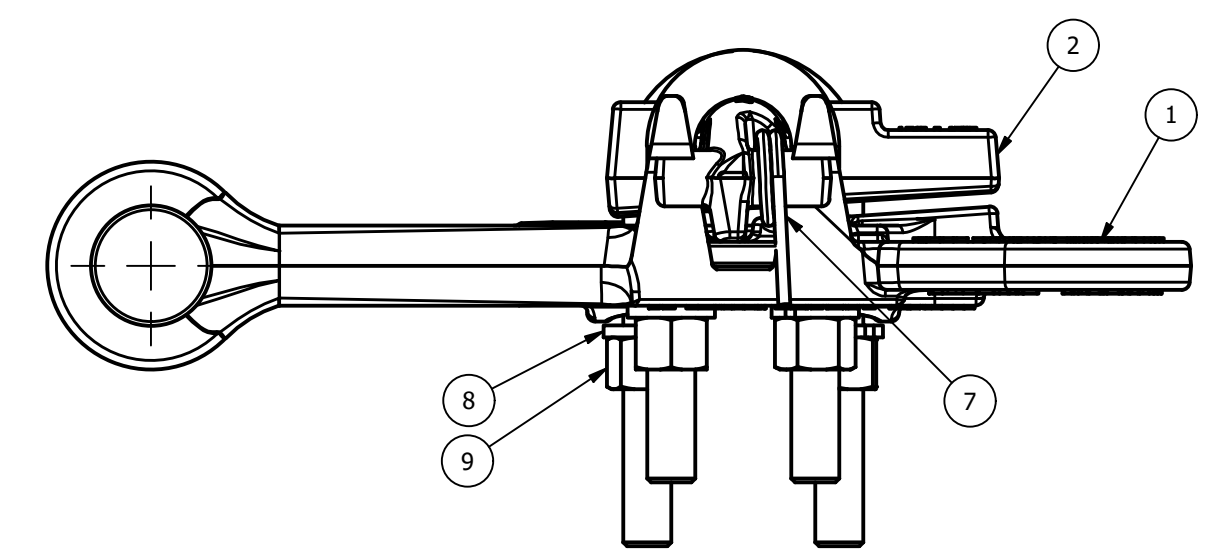
1

CATALOG NUMBER	CONDUCTOR RANGE (MIN - MAX)	ACSR (MIN - MAX)	AAC (MIN - MAX)	ULT. BODY STRENGTH	ULT. SAG EYE STRENGTH	DIM A	DIM B	DIM C	DIM D	DIM E	DIM EW	DIM PH	U-BOLTS SIZE	APPROX. WT. EACH	STANDARD PACK
ADEZ47N	.180 - .470 [4.57 - 11.94]	#6 (6/1) - 2/0 (6/1)	#4 (7) - 3/0 (19)	7000 [31.14]	4000 [17.79]	6.500 [165.10]	3.250 [82.55]	.750 [19.05]	1.000 [25.40]	1.500 [38.10]	0.50 [12.7]	0.68 [17.2]	3/8 [9.53]	1.300 [0.59]	25
ADEZ70N	.310 - .700 [7.87 - 17.78]	#4 (6/1) - 336.4 (18/1)	#4 (7) - 350 (19)	9000 [40.03]	6000 [26.69]	8.250 [209.55]	4.234 [107.55]	.937 [23.81]	1.125 [28.58]	1.625 [41.28]	0.75 [19]	0.68 [17.2]	3/8 [9.53]	1.600 [0.73]	25
ADEZ88N	.440 - .880 [11.18 - 22.35]	2/0 (6/1) - 556 (18/1)	3/0 (7) - 556 (37)	10000 [44.48]	7000 [31.14]	9.310 [236.47]	4.719 [119.86]	.937 [23.81]	1.125 [28.58]	1.625 [41.28]	0.75 [19]	0.68 [17.2]	1/2 [12.70]	3.000 [1.36]	10
ADEZ116N	.680 - 1.160 [17.27 - 29.46]	336.4 (18/1) - 954 (36/1)	350 (37) - 1000 (61)	12000 [53.38]	8000 [35.58]	10.810 [274.64]	5.375 [136.53]	1.000 [25.40]	1.125 [28.58]	1.625 [41.28]	0.75 [19]	0.68 [17.2]	1/2 [12.70]	3.700 [1.68]	10

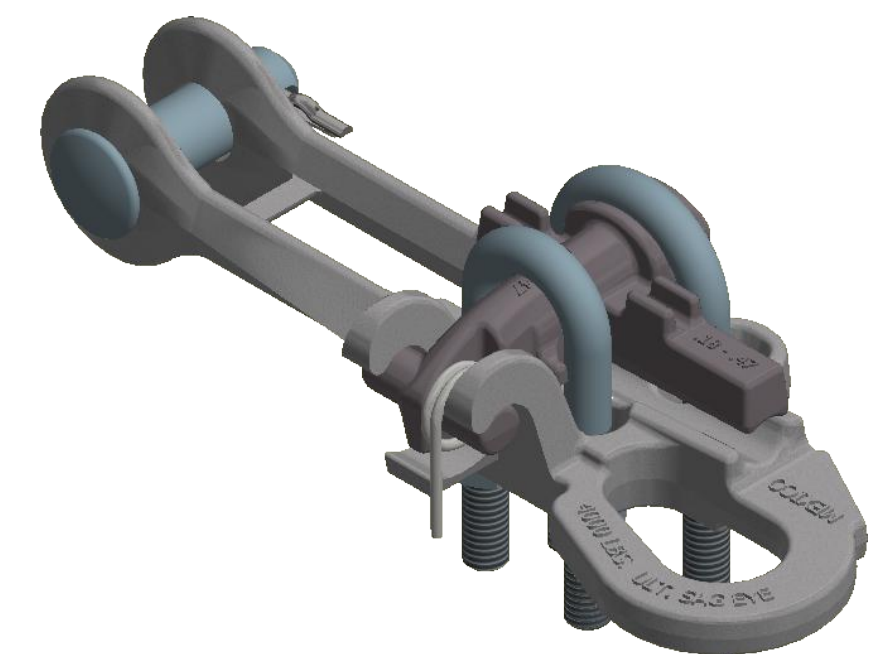
ITEM	DESCRIPTION	MATERIAL
1	BODY	ALUMINUM ALLOY
2	KEEPER	ALUMINUM ALLOY
3	CLEVIS PIN	GALV. DUCTILE IRON
4	COTTER PIN	STAINLESS STEEL
5	U-BOLT	GALV. STEEL
6	U-BOLT	GALV. STEEL
7	SPRING	STAINLESS STEEL
8	WASHER	GALV. STEEL
9	NUT	GALV. STEEL



CLEVIS FITTING (TYPE CA)



SOCKET FITTING (TYPE SA)



- NOTES:
- ALL DIMENSIONS FOR REFERENCE ONLY. DISTANCE IN. [MM], FORCE: LBS-Force [kN], TORQUE IN. LBS. [N.m], & WEIGHT LBS. [KG].
  - RATINGS:
    - RECOMMENDED TORQUE ON BOLTS: 3/8"-240 [27], 1/2"-480 [54]
    - RATED 40% OF RBS PARTIAL TENSION PER ANSI C119.4
  - CERTIFICATIONS, SPECIFICATIONS, & STANDARDS:
    - ANDERSON PRODUCT SPECIFICATION 56,013.
  - A SUFFIX IS ADDED TO THE CATALOG NUMBER TO DESIGNATE THE REQUIRED FITTINGS AS SHOWN IN THE TABULATION (EXAMPLE: ADEZ46S):
    - "S" - SOCKET
    - "C" - CLEVIS
    - "N" - NO FITTING
  - OTHER SUFFIXES (EX. ADEZ88NBK):
    - "E" - INCLUDES OPTIONAL STAINLESS STEEL LIFTING EYE. (EXAMPLE: ADEZ46EN)
    - "HP" - INCLUDES HEX CLEVIS PIN. (EX. ADEZ47ENHP LIFTING EYE, NO END FITTING, AND HEX CLEVIS PIN)
    - "HQ" - INCLUDES HEAVY GALVANIZING HARDWARE PER CSA G164
    - "BNK" - REPLACES CLEVIS PIN AND COTTER PIN ASSEMBLY WITH CLEVIS BOLT, JAM NUT AND COTTER PIN ASSEMBLY. (EX. ADEZ88NBK)
    - "O" - REPLACES STANDARD NUTS WITH SHEAR NUTS. (EX. ADEZ47NO)
    - "LFW" - INCLUDES BOTH LOCK AND FLAT WASHERS. (EX. ADEZ47NLFW)
    - "NSB" - NO SPACER BAR. (EX. ADEZ47NNSB)

220929024452	09/29/22	SAV	SI	SD	<p>THIRD ANGLE PROJECTION</p>	<p><b>HUBBELL POWER SYSTEMS, Inc.</b></p>
EC #	DATE	CHANGED BY	CHECKED BY	APPROVED BY		
DESCRIPTION:					WEIGHT, LBS	<p>TITLE</p> <p><b>AL. BOLTED DEADEND STRAIGHT LINE -SPRING LOADED- SIDE OPENING</b></p>
UPDATED THE METRIC CONVERSION FOR STRENGTH					SEE TABLE	
ADDITIONAL COMMENTS: --					<p>CATALOG NUMBER: <b>SEE TABLE</b></p>	
SIZE		DWG NO.	PART / ASSY NO.		REV	<p>SCALE: <b>2 : 3</b></p> <p>DRN BY: <b>MAJ</b></p> <p>DATE: <b>10/02/98</b></p> <p>SHEET <b>1</b> OF <b>1</b></p>
C		CC-15659	SEE TABLE		10	

4

3

2

1