

CATALOG NUMBER	FIG. NO	CABLE RANGE				DIMENSIONS IN INCHES							ULTIMATE STRENGTH IN LBS.	APPROX SHIP WT. IN LBS. EACH
		ACSR		INCHES										
		MIN	MAX	MIN	MAX	A	B	C	D	E	F	J		
AAC-301	1	#6	1/0	0.198	0.732	2.875	3.875	4.25	0.688	0.813	0.625	0.5	7,000	1.25
AAC-302	2	#6	1/0	0.198	0.732	2.875	3.875	4.25	0.688	1	0.625	0.5	7,000	1.25

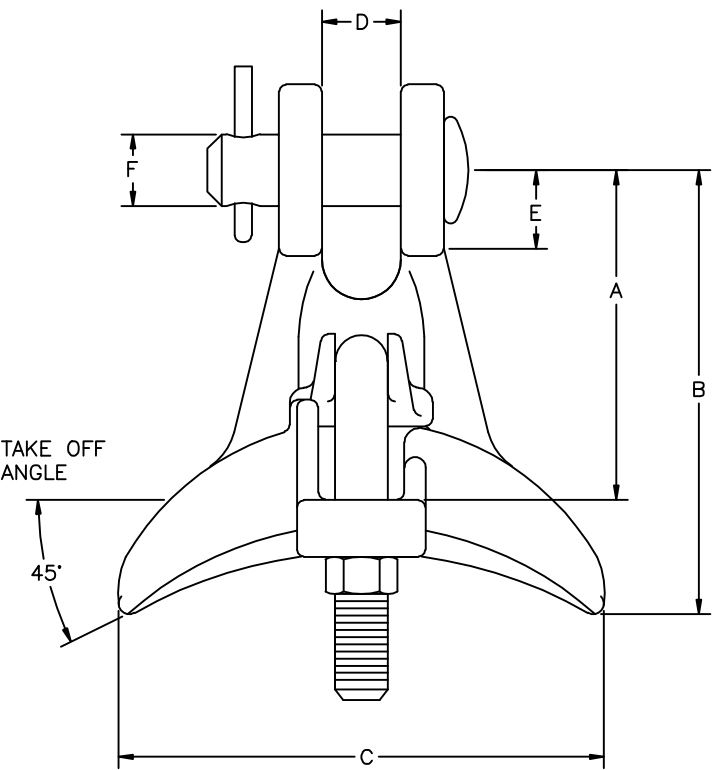


FIGURE 1

NOTES:

1. MATERIAL: BODY & KEEPER ALUMINUM ALLOY
HARDWARE – GALV. STEEL
COTTER PIN – STAINLESS STEEL
2. ALL FERROUS PARTS GALVANIZED PER ASTM A153 OR B695
1. HEX CLEVIS PIN CAN BE SUPPLIED BY ADDING SUFFIX "HP" TO CATALOG NUMBER
2. FOR "HQ" SUFFIX, SEE DRAWING CC-19501
3. THESE CLAMPS ARE RECOMMENDED FOR ACSR CABLE. NO LINERS REQUIRED.
4. THESE CLAMPS ARE NOT RECOMMENDED FOR COPPER OR COPPWERWELD CABLES.

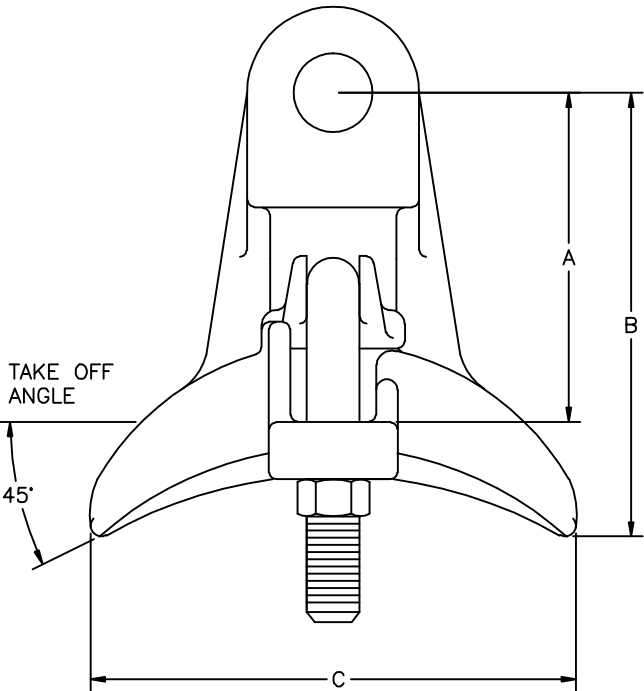
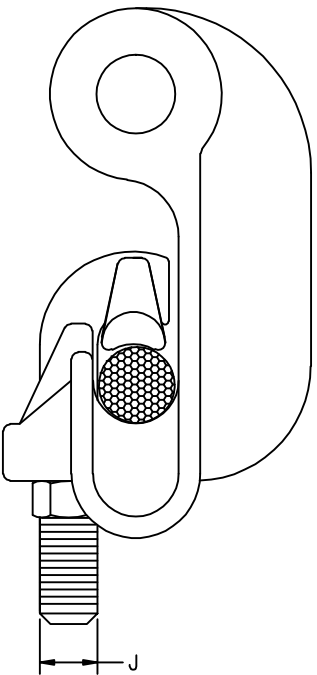
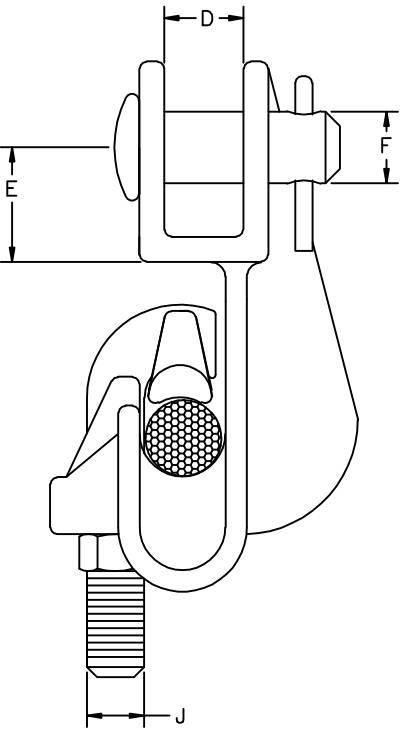



FIGURE 2



37369	9/14/10	MTF	MTF	ANDERSON*	 HUBBELL* POWER SYSTEMS			
EC #	DATE	CHG BY	RESP ENG					
DESC OF DWG: ADDED NOTE ABOUT "HQ" SUFFIX BEING ON DWG CC-19501 --- --- REASON (S) FOR CHANGE: --- DISPOSITION OF MAT'L: ---				CONFIDENTIAL: THIS DRAWING AND ITS CONTENTS ARE CONFIDENTIAL AND THE EXCLUSIVE PROPERTY OF HUBBELL POWER SYSTEMS. NO PUBLICATION, DISTRIBUTION OR COPIES MAY BE MADE WITHOUT THE WRITTEN CONSENT OF HUBBELL POWER SYSTEMS. HUBBELL POWER SYSTEMS UNPUBLISHED ALL RIGHTS RESERVED UNDER THE COPYRIGHT LAWS.	TITLE SUSPENSION ANGLE CLAMP BODY			
SIZE		DWG NO.				CAT / PART / ASSY NO.		REV
C		CC-19292				SEE TABLE		02
DO NOT SCALE THIS DRAWING		DRN BY MWA				DATE 4/19/2010		SHEET 1 OF 1