

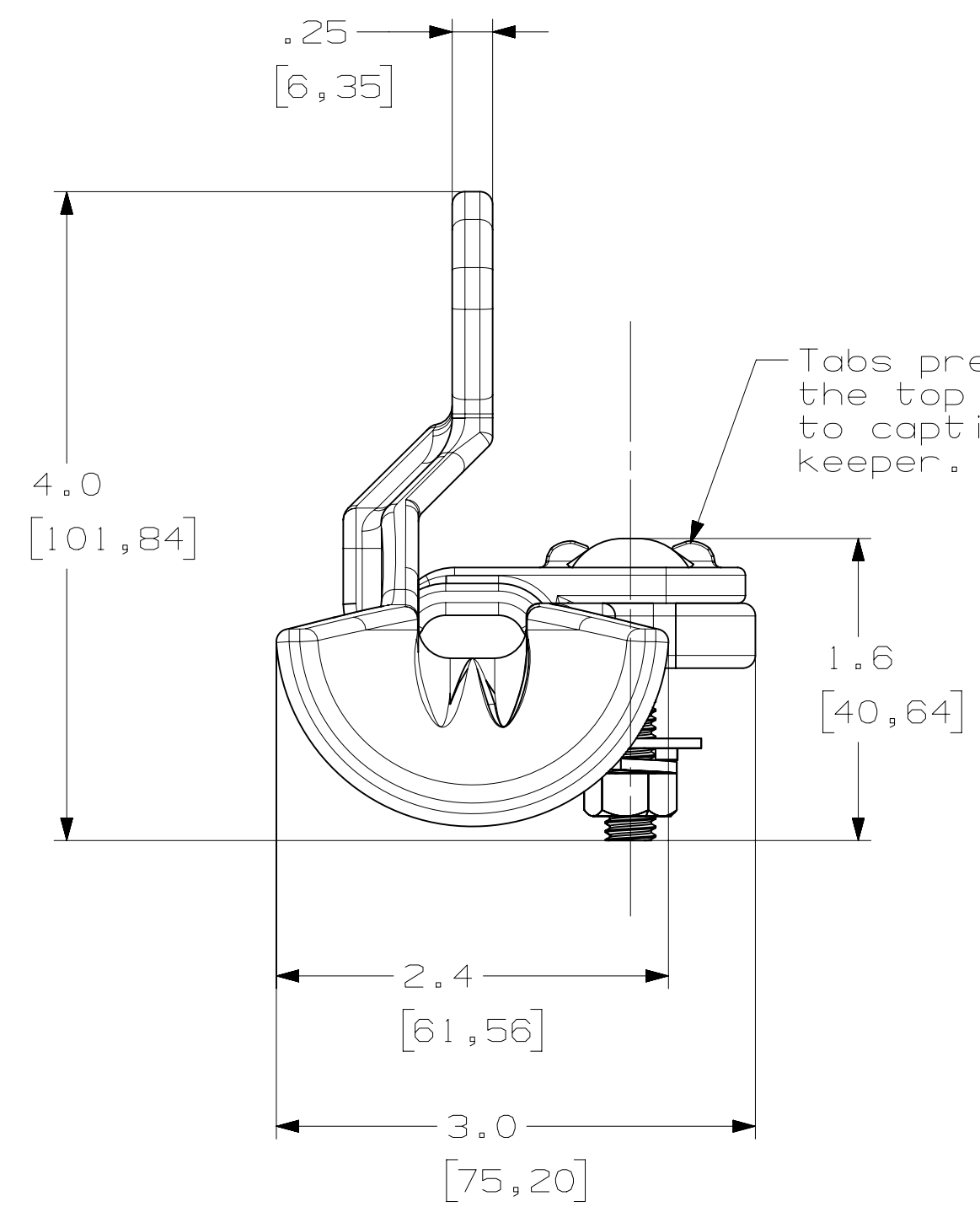
4 3 2 1

D

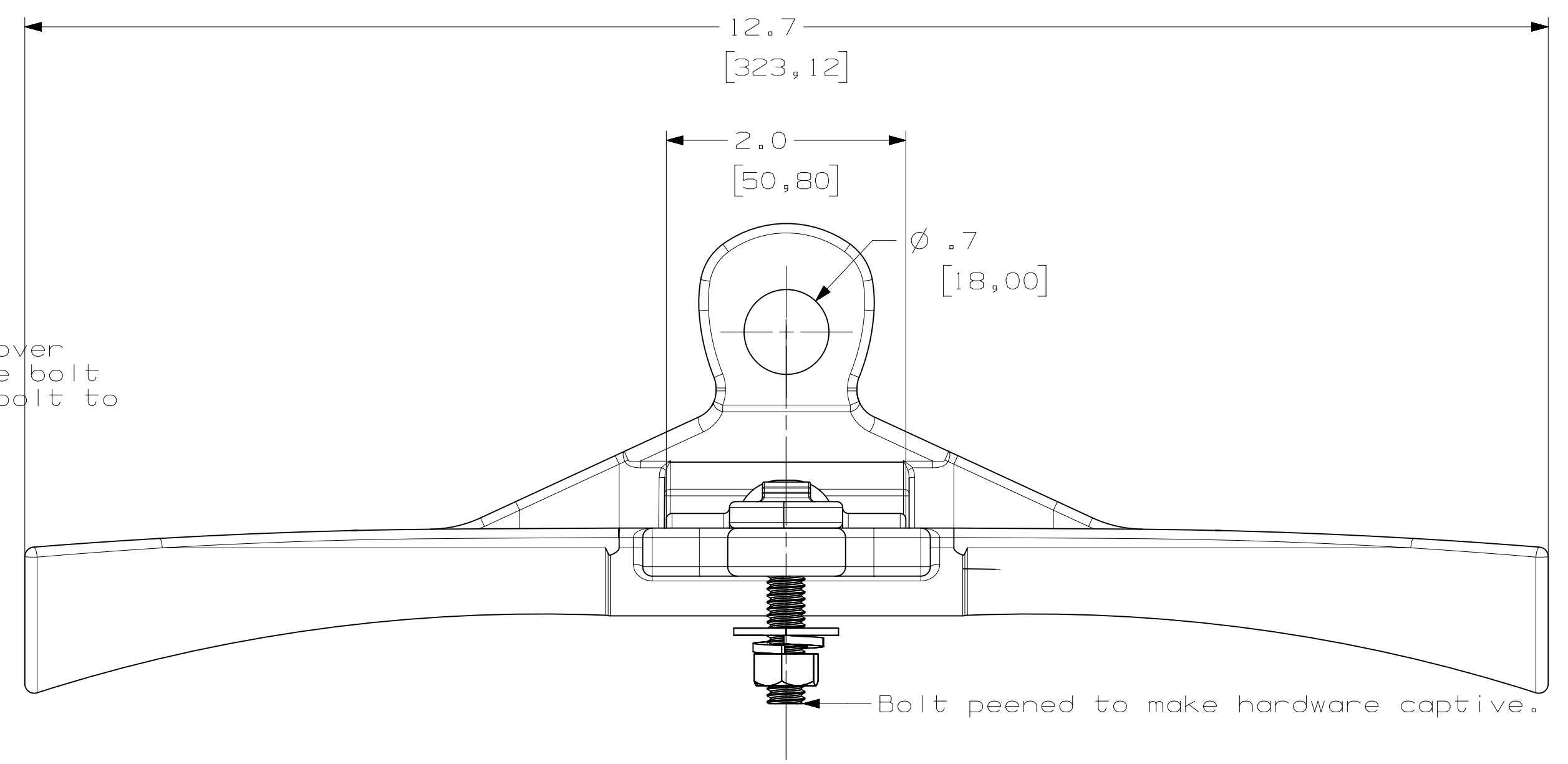
C

B

A



Tabs pressed over the top of the bolt to captivate bolt to keeper.



- NOTES:
1. DIMENSIONS ARE IN INCHES [MILLIMETERS].
 2. MATERIAL: ALUMINUM
 3. HARDWARE: 1/2" [13M] 18-8 STAINLESS STEEL.
 4. RECOMMENDED TORQUE: 10 LBF [13.5 Nm]
 5. THE BOTTOM OF THE BOLT WILL BE PEENED TO CAPTIVATE THE HARDWARE (NUT, LOCK WASHER, & FLAT WASHER) AND KEEPER TO BODY. THE TOP OF THE KEEPER WILL HAVE TABS THAT WILL BE PEENED DOWN TO MAKE THE BOLT AND KEEPER A SINGLE ASSEMBLY. THIS WILL BE DONE BY THE MANUFACTURER.

57485	0	CUSTOMER DRAWING	9/10/14	JW	JW
EC #	REV	DESCRIPTION	DATE	CHG BY	APPR'd
REVISION HISTORY					

HPS®	HUBBELL® POWER SYSTEMS		
RIBBON FIBER SUSPENSION ASSEMBLY			
SIZE	DWG NO.	CAT / PART / ASSY NO.	REV
C	CC-22366	HUBRPXSUS	0
SCALE: NTS	DRN BY: JW	DATE: 9/10/14	SHEET 1 OF 1

4 3 2 1