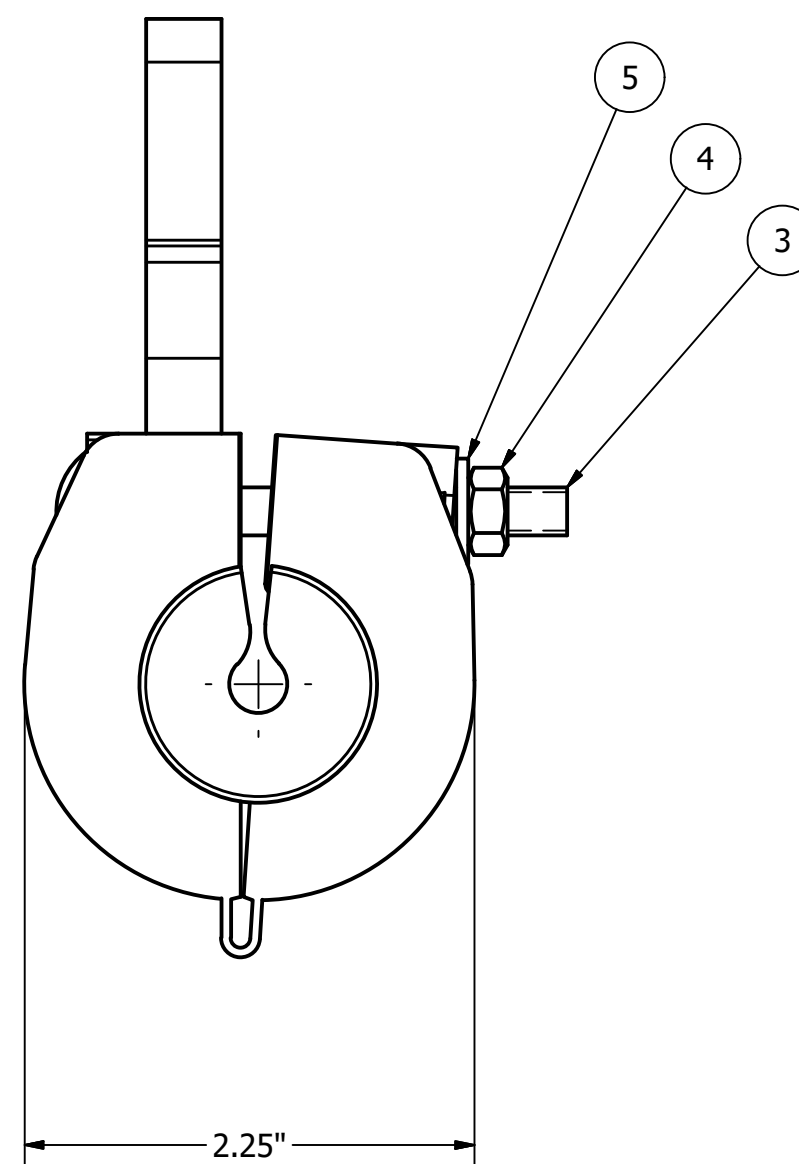
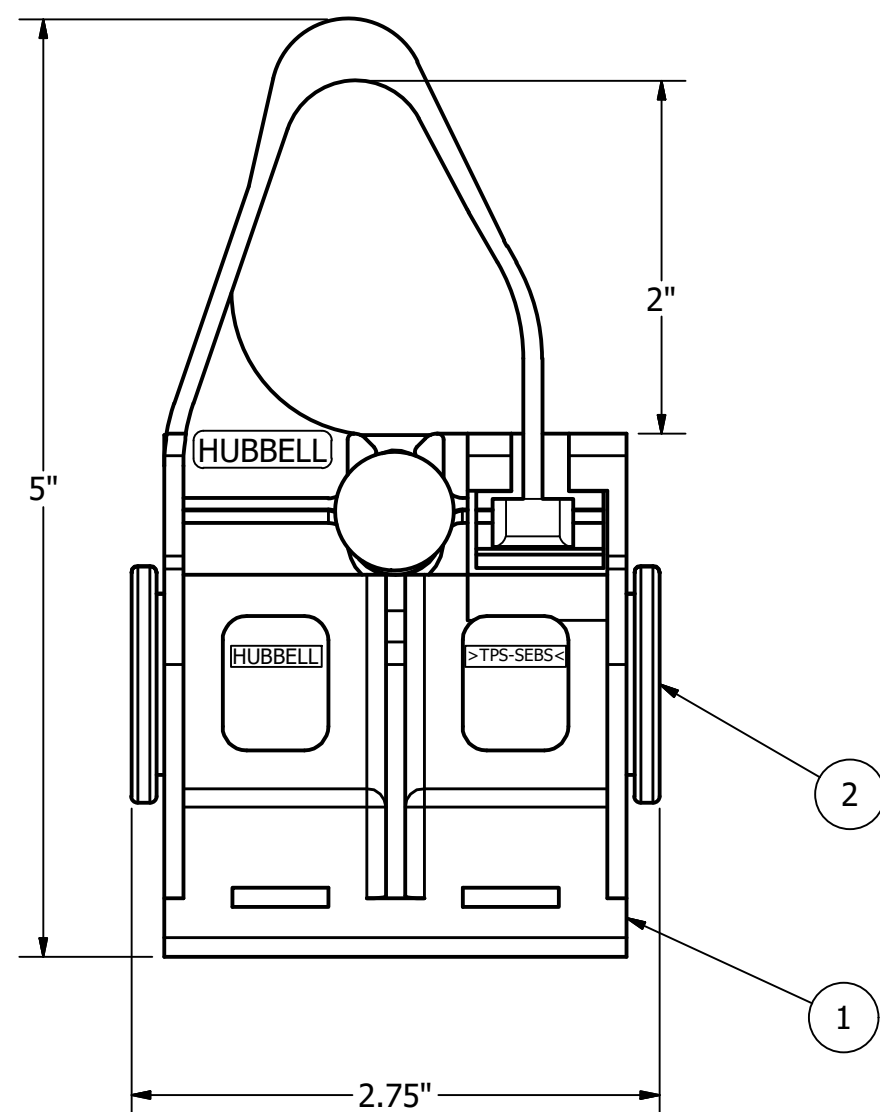


CATALOG NO	CABLE DIA RANGE	WEIGHT LBS.	STANDARD PACK
AHSC800	.315 TO .472 [8.00 TO 12.00]	.884 [.40]	30
AHSC1200	.472 TO .630 [12.00 TO 16.00]	.984 [.45]	30

ITEM	DESCRIPTION	MATERIAL
1	BODY	THERMOPLASTIC
2	INSERT	RUBBER
3	BOLT 1/2"	STEEL
4	NUT	STEEL
5	WASHER	STEEL



NOTES:

- ALL DIMENSIONS FOR REFERENCE ONLY. DISTANCE IN. [MM], FORCE LBS. [kN], TORQUE IN. LBS. [N.m], & WEIGHT LBS. [KG].
- RATINGS:
  - MAX. VERTICAL LOAD: 450 LBS [204.1].
  - FOR TANGENT SUSPENSION ON SPANS LESS THAN 325 FT. AND 20° ANGLE
- CERTIFICATIONS, SPECIFICATIONS, & STANDARDS:
  - NA
- SUFFIXES & VARIANT CONFIGURATION:
  - NA

78853	06/12/19	HD	RG	HPS.	<b>HUBBELL® POWER SYSTEMS</b> <small>POWER SYSTEMS, INC.</small>					
EC #	DATE	CHG BY	RESP ENG		<b>AHSC, ADSS SUSPENSION CLAMP</b>					
DESC OF DWG: <b>REDRAWN IN INVENTOR NEW CC-TEMPLATE</b>				CONFIDENTIAL: THIS DRAWING AND ITS CONTACTS ARE CONFIDENTIAL AND THE EXCLUSIVE PROPERTY OF HUBBELL POWER SYSTEMS. NO PUBLICATION, DISTRIBUTION OR COPIES MAY BE MADE WITHOUT THE WRITTEN CONSENT OF HUBBELL POWER SYSTEMS. HUBBELL POWER SYSTEMS UNPUBLISHED ALL RIGHTS RESERVED UNDER THE COPYRIGHT LAWS		TITLE <b>AHSC, ADSS SUSPENSION CLAMP</b>	SIZE <b>C</b>	DWG NO. <b>CC-23209</b>	CAT / PART / ASSY NO. <b>SEE CHART</b>	REV <b>01</b>
REASON (S) FOR CHANGE: DISPOSITION OF MAT'L:				DO NOT SCALE THIS DRAWING		DRN BY <b>JES</b>	DATE <b>09/17/15</b>	SHEET <b>1 OF 1</b>		