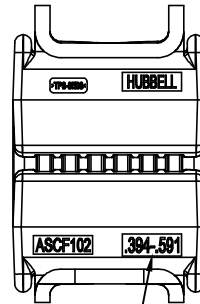
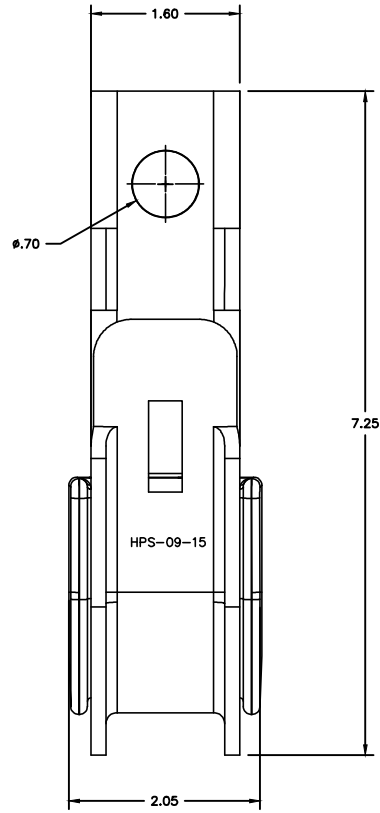
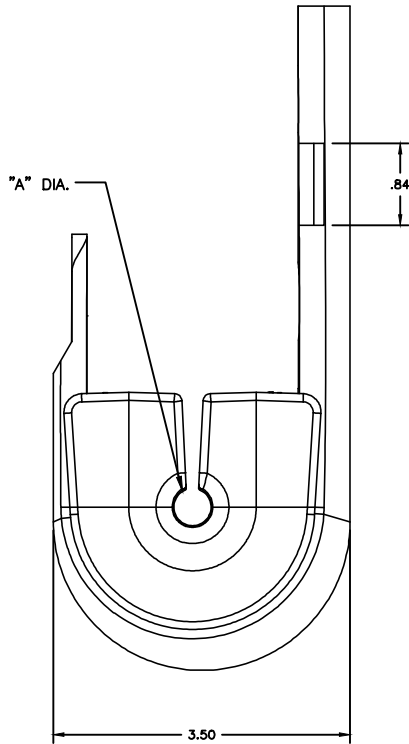
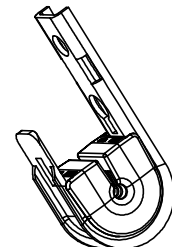


PART NO.	CABLE RANGE IN. (MM)	"A" DIA. IN.
ASCF102	.394-.591 (10-15)	0.38
ASCF114	.591-.787 (15-20)	0.62



CABLE DIAMETER



**NOTES:**

1. ALL DIMENSIONS IN INCHES
2. MATERIAL:
  - BODY: GALV. STEEL
  - INSERT: NEOPRENE RUBBER
  - HARDWARE: GALV. STEEL
3. FOR TANGENT SUSPENSION ON SPANS LESS THAN 325 FT. AND 20° ANGLE
4. MAX VERTICAL LOAD: 2,500 LBS

62685	10/20/15	JES	JES
EC #	DATE	CHG BY	RESP ENG
REASON FOR CHANGE: --			
DISPOSITION OF PART: --			

HPS		<b>HUBBELL POWER SYSTEMS</b>	
CONFIDENTIAL: THIS DRAWING AND ITS CONTENTS ARE CONFIDENTIAL AND THE EXCLUSIVE PROPERTY OF HUBBELL POWER SYSTEMS. NO PUBLICATION, DISTRIBUTION OR COPIES MAY BE MADE WITHOUT THE WRITTEN CONSENT OF HUBBELL POWER SYSTEMS. HUBBELL POWER SYSTEMS UNPUBLISHED. ALL RIGHTS RESERVED UNDER THE COPYRIGHT LAWS.			
TITLE <b>ASCF ADSS          SUSPENSION CLAMP</b>		SIZE: C DWG NO.: CC-23210	CAT / PART / ASSY NO.: ASCFXXX REV: 00
DO NOT SCALE THIS DRAWING		DRN BY: JES	DATE: 9/17/15
			SHEET 1 OF 1