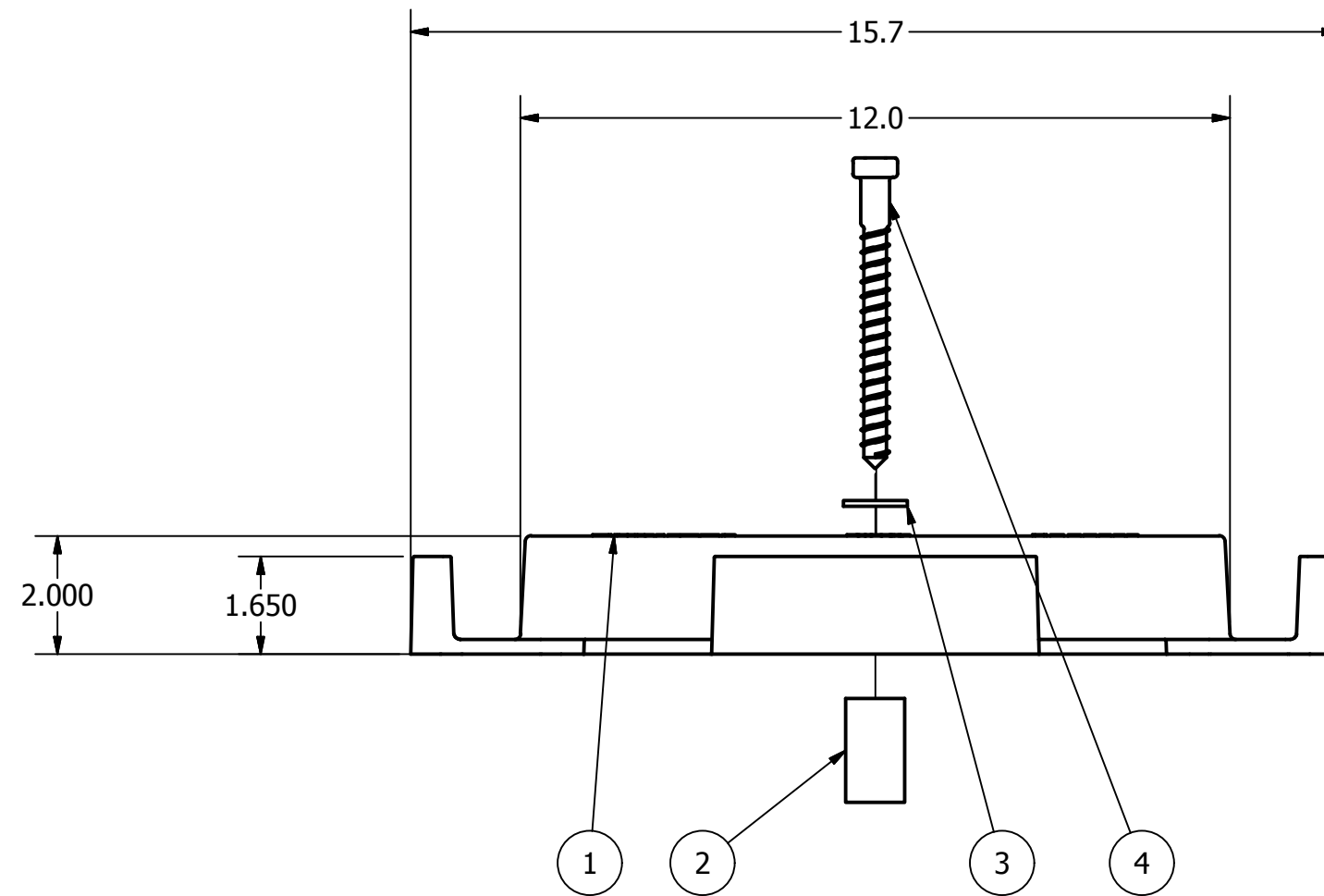
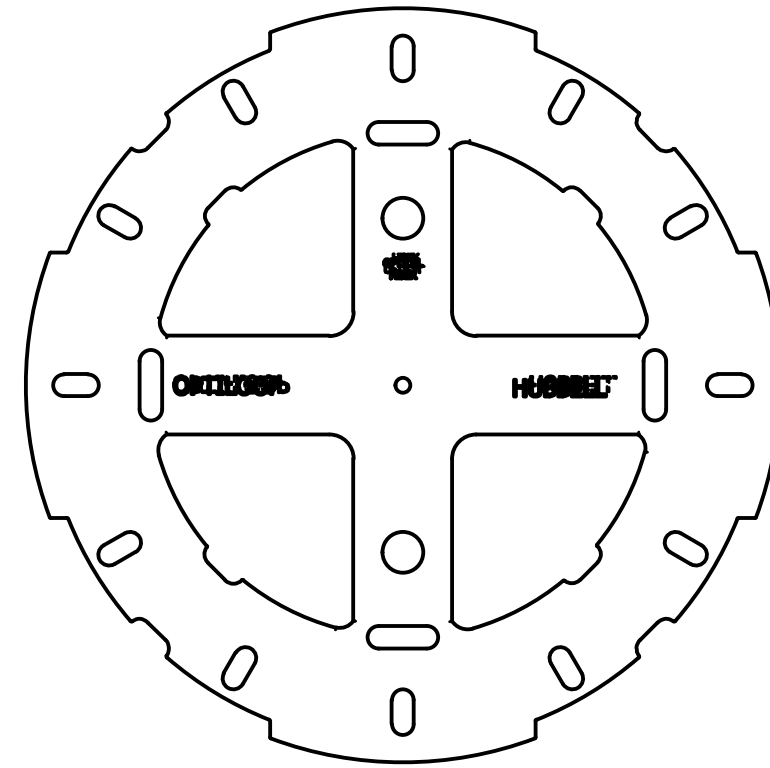


ITEM NO.	DESCRIPTION	QTY.
1	14" CABLE WHEEL	1
2	ALUMINUM SPACER	1
3	WASHER	1
4	1/2" X 5.25" LAGG BOLT	1



NOTES:

1. MATERIAL:

CABLE WHEEL: UV RESISTANT POLYPROPYLENE.
 SPACER: ALUMINUM
 HARDWARE: GALVANIZED STEEL

2. PLASTIC FIBER OPTIC STORAGE UNIT TO BE USED ON FIGURE 8, LASHED, OR ADSS CABLE.

3. MOUNTED TO WOOD POLE OR WALL USING SPACER, WASHER, AND 1/2" HEX HEAD LAGG BOLT (SUPPLIED).

4. SPACER TO BE INSTALLED BETWEEN CABLE WHEEL AND WALL OR POLE AND SECURED USING BOLT.

5. DIMENSIONS IN INCHES

71155	09/08/17	RG	RG
EC #	DATE	CHG BY	RESP ENG
DESC OF DWG: TOOLING OF WHEEL HAS BEEN MODIFIED			
REASON (S) FOR CHANGE: DISPOSITION OF MAT'L:			

OPTI-LOOP

CONFIDENTIAL: THIS DRAWING AND ITS CONTENTS ARE CONFIDENTIAL AND THE EXCLUSIVE PROPERTY OF HUBBELL POWER SYSTEMS. NO PUBLICATION, DISTRIBUTION OR COPIES MAY BE MADE WITHOUT THE WRITTEN CONSENT OF HUBBELL POWER SYSTEMS. HUBBELL POWER SYSTEMS UNPUBLISHED ALL RIGHTS RESERVED UNDER THE COPYRIGHT LAWS



HUBBELL POWER SYSTEMS

TITLE 14" CABLE WHEEL W/ HEX HEAD LAGG BOLT			
SIZE C	DWG NO. CC-23221	CAT / PART / ASSY NO. FOSPCW14HEX	REV 01
DO NOT SCALE THIS DRAWING	DRN BY JES	DATE 10/26/15	SHEET 1 OF 1