

FIG. NO.	CATALOG NO.	DIM "A"	DIM "B"	DIM "C" OUTSIDE CHANNEL	DIM "D" INSIDE CHANNEL	MOUNTING TYPE	WEIGHT	STANDARD PACK	QTY		
									ITEM	DESCRIPTION	MATERIAL
1	DCSU8PM	8.200 [20.83]	8.100 [20.57]	1.360 [3.45]	1.050 [2.67]	MOUNTED TO THE POLE USING THE SUPPLIED LAG SCREW. MOUNT WITH INVERTED CABLE CHANNEL FACING AWAY FROM THE POLE.	.339 [.15]	1	1	1	1
2	DCSU8ADSS	8.200 [20.83]	8.100 [20.57]	1.360 [3.45]	1.050 [2.67]	MOUNTED DIRECTLY ON ADSS CABLE USING TEAR-AWAY RUBBER GROMMET AND PLASTIC TIES(SUPPLIED)	.440 [.20]	1	-	1	-
3	DCSU8TMK	8.200 [20.83]	8.100 [20.57]	1.360 [3.45]	1.050 [2.67]	MOUNTED TO MESSENGER WIRE USING TMK MOUNTING BRACKET(SUPPLIED)	.471 [.21]	1	-	2	-
									-	-	1

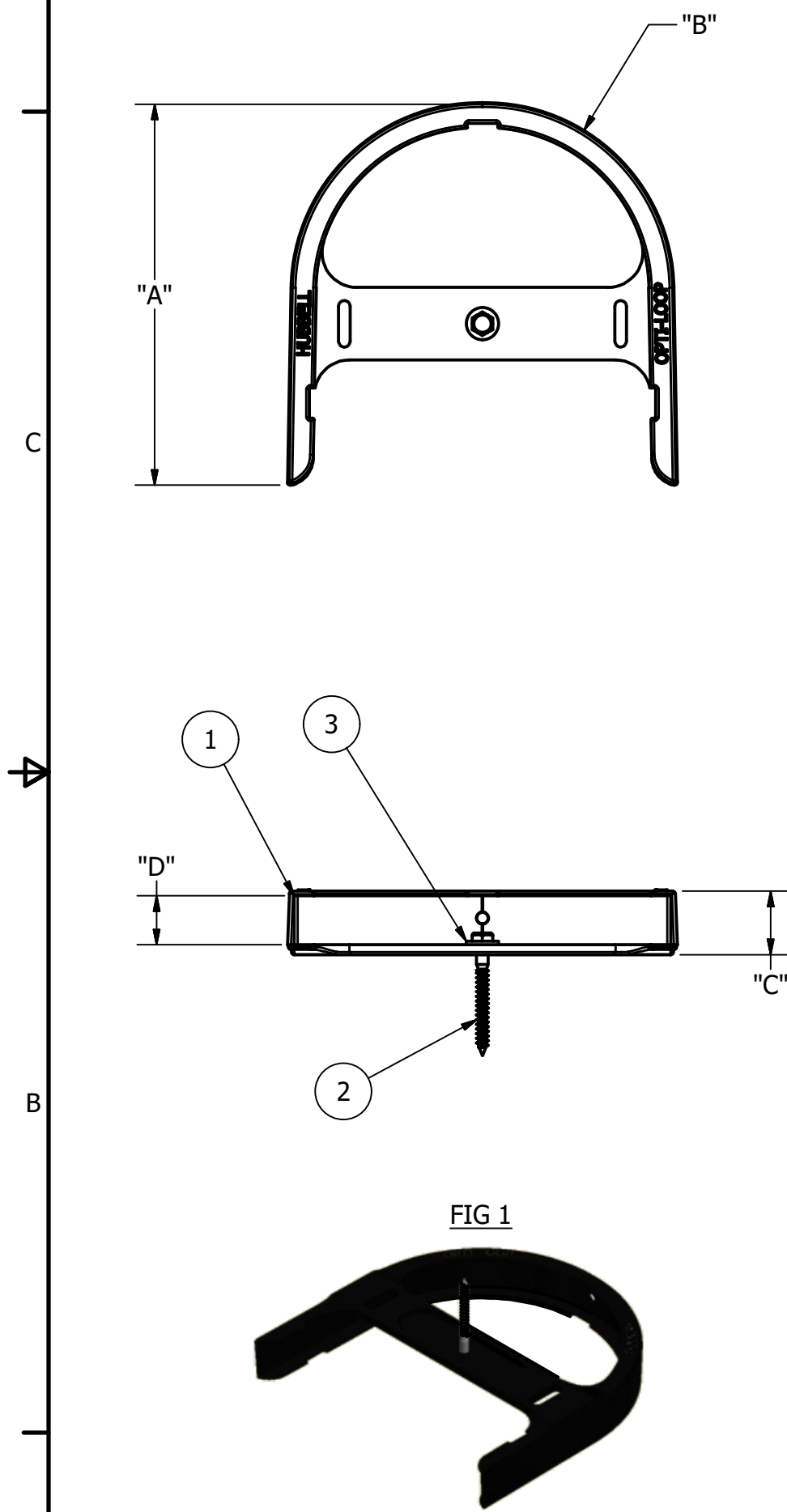


FIG 1

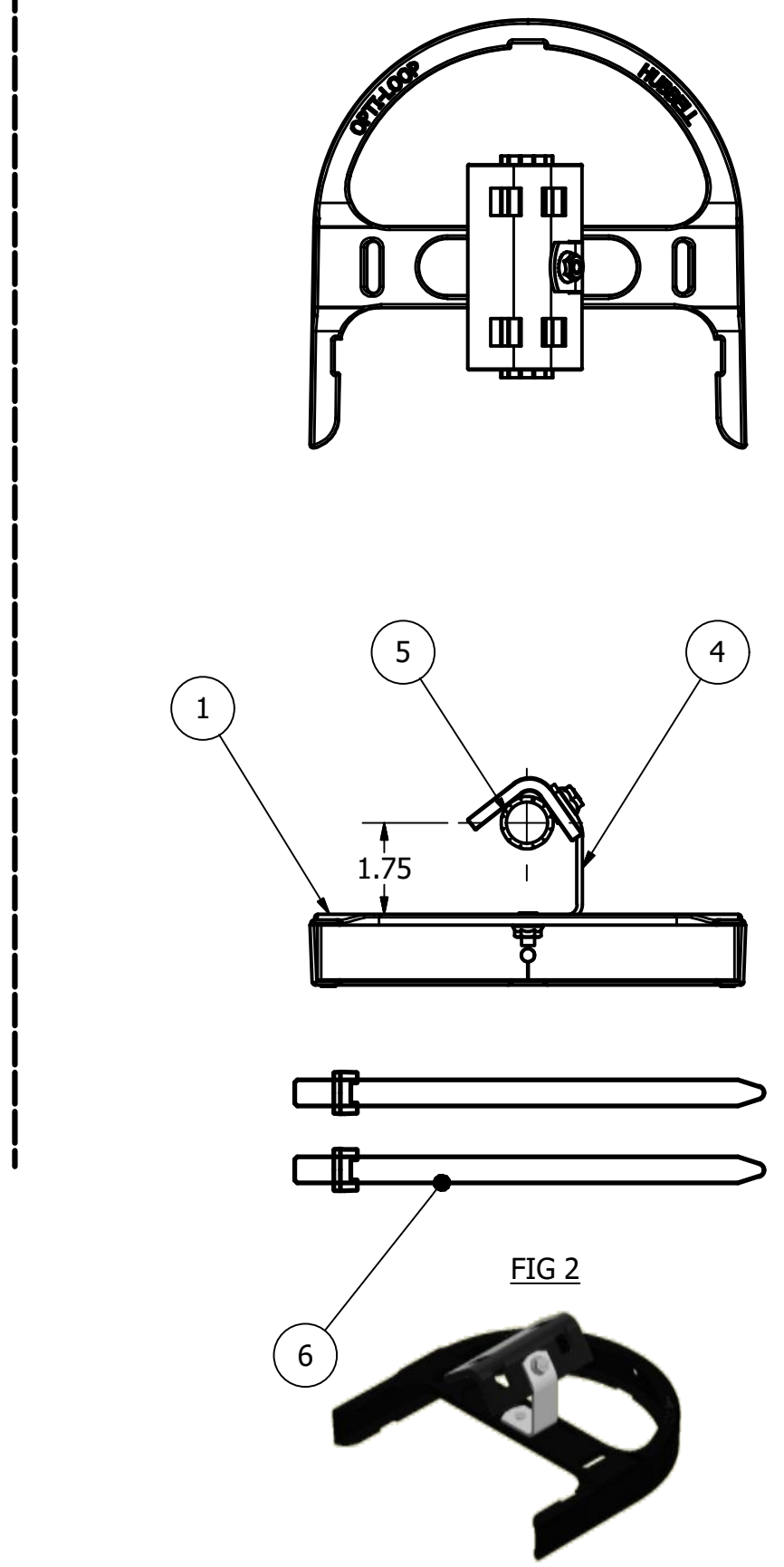


FIG 2

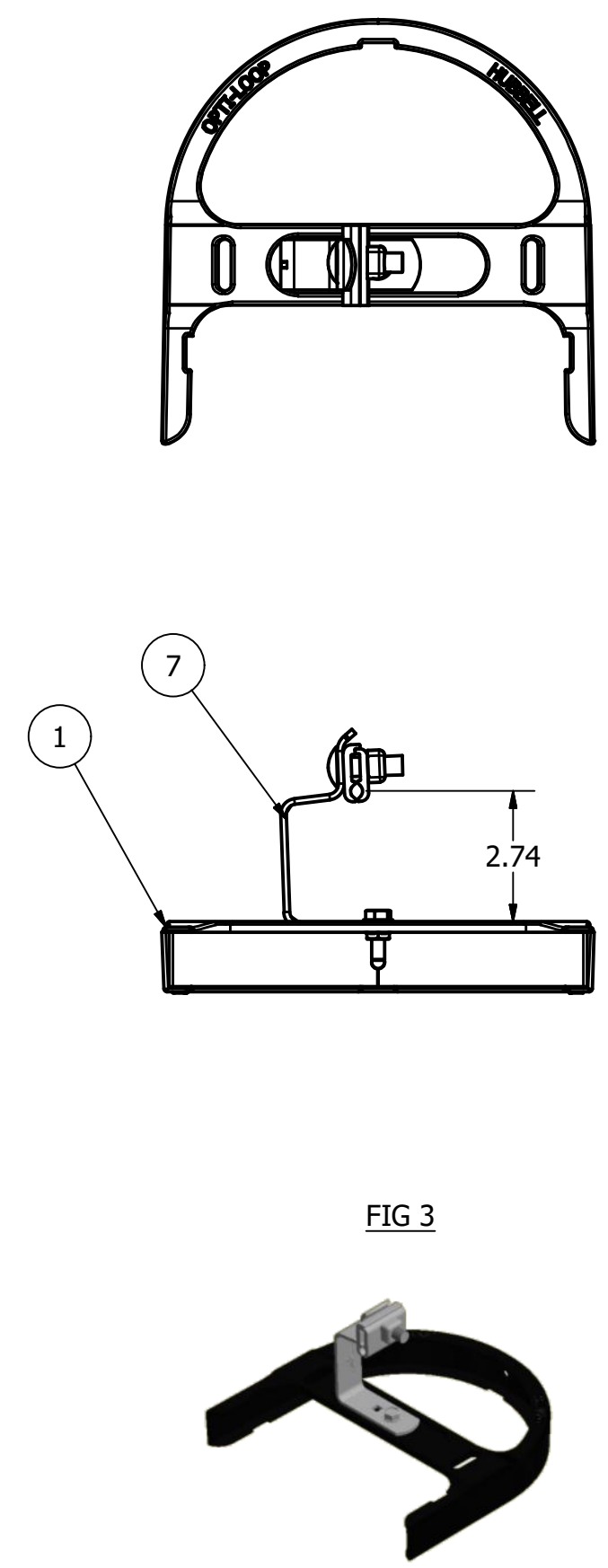


FIG 3

NOTES:

- ALL DIMENSIONS FOR REFERENCE ONLY. DISTANCE IN. [MM], FORCE LBS. [kN], TORQUE IN. LBS. [N.m], & WEIGHT LBS. [KG].
- RATINGS:
  - MAXIMUM RECOMMENDED CABLE DIAMETER: 0.4 IN [10.2]
- CERTIFICATIONS, SPECIFICATIONS, & STANDARDS:
  - NA
- SUFFIXES & VARIANT CONFIGURATION:
  - NA
- PLASTIC FIBER STORAGE UNIT FOR STORING EXCESS SLACK FROM A FIBER DROP.

78862	06/13/19	HD	RG	HPS.	<b>HUBBELL® POWER SYSTEMS</b> <small>POWER SYSTEMS, INC.</small>							
EC #	DATE	CHG BY	RESP ENG									
DESC OF DWG: REDRAWN IN INVENTOR NEW CC-TEMPLATE ADDED FIG NO. 2 & 3				<small>CONFIDENTIAL: THIS DRAWING AND ITS CONTACTS ARE CONFIDENTIAL AND THE EXCLUSIVE PROPERTY OF HUBBELL POWER SYSTEMS. NO PUBLICATION, DISTRIBUTION OR COPIES MAY BE MADE WITHOUT THE WRITTEN CONSENT OF HUBBELL POWER SYSTEMS. HUBBELL POWER SYSTEMS UNPUBLISHED ALL RIGHTS RESERVED UNDER THE COPYRIGHT LAWS</small>	TITLE <b>DCSU 8" INVERTED HORSE SHOE POLE/ADSS/TMK MOUNT</b>							
REASON (S) FOR CHANGE: DISPOSITION OF MAT'L:					<table border="1"> <tr> <td>SIZE</td> <td>DWG NO.</td> <td>CAT / PART / ASSY NO.</td> <td>REV</td> </tr> <tr> <td><b>C</b></td> <td>CC-23321</td> <td>SEE CHART</td> <td><b>01</b></td> </tr> </table>	SIZE	DWG NO.	CAT / PART / ASSY NO.	REV	<b>C</b>	CC-23321	SEE CHART
SIZE	DWG NO.	CAT / PART / ASSY NO.	REV									
<b>C</b>	CC-23321	SEE CHART	<b>01</b>									
		DO NOT SCALE THIS DRAWING	DRN BY JES	DATE 01/07/16	SHEET 1 OF 1							