

STANDARD CONDUCTOR (FIG. 1)								
CATALOG NUMBER	CONDUCTOR RANGE (MIN - MAX)	SOLID CONDUCTOR	STRAND CONDUCTOR	COPPER WELD CONDUCTOR	DIM A IN. [MM]	DIM B IN. [MM]	APPROX. WT. EACH LB. [KG]	STANDARD PACK
GL110	.122 - .130 [3.10 - 3.30]	8	-	-	3.386 [86.00]	.512 [13.00]	.110 [0.05]	100
GL111+	.158 - .173 [4.00 - 4.40]	6	-	3 #12	3.386 [86.00]	.512 [13.00]	.110 [0.05]	100
GL112+	.193 - .205 [4.90 - 5.20]	4	-	8A	3.504 [89.00]	.551 [14.00]	.140 [0.06]	100
GL113	.224 - .232 [5.70 - 5.90]	3	4 (7)	6A	3.504 [89.00]	.551 [14.00]	.140 [0.06]	100
GL114	.248 - .260 [6.30 - 6.60]	2	3 (7), 4 (3)	5A	4.400 [110.00]	.748 [19.00]	.280 [0.13]	100
GL1140	.224 - .260 [5.70 - 6.60]	2 OR 3	3 (7), 4 (7)	-	6.500 [160.00]	.748 [19.00]	.340 [0.15]	100
GL115+	.283 - .291 [7.20 - 7.40]	1	2 (7)	4A	4.400 [110.00]	.748 [19.00]	.260 [0.12]	100
GL116	.319 - .327 [8.10 - 8.30]	1/0	1(7), 2 (3)	3A	4.400 [110.00]	.748 [19.00]	.290 [0.13]	100
GL117+	.358 - .366 [9.10 - 9.30]	2/0	1/0 (7), 1(3)	2A	5.512 [140.00]	.945 [24.00]	.530 [0.24]	100
GL118+	.402 - .413 [10.20 - 10.50]	3/0	2/0 (7)	-	5.512 [140.00]	.945 [24.00]	.520 [0.23]	100
GL119+	.453 - .465 [11.50 - 11.80]	4/0	3/0 (7)	-	6.900 [180.00]	1.181 [30.00]	1.000 [0.45]	50
GL120+	.520 - .528 [13.20 - 13.40]	-	4/0 (7,19)	-	6.900 [180.00]	1.181 [30.00]	1.000 [0.45]	50
GL121	.567 - .579 [14.40 - 14.70]	-	250 (19,37)	-	6.900 [180.00]	1.181 [30.00]	1.040 [0.47]	50
GL123	.622 - .634 [15.80 - 16.10]	-	300 (19,37)	-	8.661 [220.00]	1.496 [38.00]	2.343 [1.06]	25
GL125	.669 - .677 [17.00 - 17.20]	-	350 (19)	-	8.661 [220.00]	1.496 [38.00]	2.240 [1.02]	25
GL127	.713 - .728 [18.10 - 18.50]	-	400 (19,37)	-	8.661 [220.00]	1.496 [38.00]	2.240 [1.02]	25
GL128	.764 - .772 [19.40 - 19.60]	-	450 (37)	-	8.661 [220.00]	1.496 [38.00]	2.240 [1.02]	25
GL130	.803 - .815 [20.40 - 20.70]	-	500 (19,37)	-	8.661 [220.00]	1.496 [38.00]	2.160 [.98]	25

METRIC CONDUCTOR (FIG. 2)								
CATALOG NUMBER	CONDUCTOR RANGE (MIN - MAX)	CONDUCTOR (mm ²)	CU SOLID	CU STRAND	DIM A IN. [MM]	DIM B IN. [MM]	APPROX. WT. EACH LB. [KG]	STANDARD PACK
GL110M	.100 - .140 [2.60 - 3.50]	6	--	--	4.200 [107]	.512 [13]	.127 [.06]	100
GL111M	.120 - .170 [3.40 - 4.30]	10	#8 #6	--	4.200 [107]	.512 [13]	.127 [.06]	100
GL112M	.170 - .200 [4.20 - 5.20]	16 SOL.	--	--	4.360 [111]	.551 [14]	.167 [.08]	100
GL113M	.190 - .230 [5.00 - 5.80]	16 STR.	#4 #3	#4 7 STR	4.360 [111]	.551 [14]	.167 [.08]	100
GL114M	.220 - .260 [5.80 - 6.60]	25	--	--	5.460 [139]	.708 [18]	.343 [.16]	100
GL115M	.250 - .330 [6.50 - 7.60]	35	#2 #1 1/0	#2 7 STR	5.460 [139]	.708 [18]	.333 [.15]	100
GL117M	.310 - .370 [7.90 - 9.40]	50	--	--	6.480 [165]	.906 [23]	.588 [.27]	100
GL118M	.360 - .430 [9.40 - 10.90]	70	2/0 3/0	1/0 7 STR 2/0 7 STR	6.480 [165]	.906 [23]	.590 [.27]	100
GL119M	.440 - .500 [11.30 - 12.60]	95	4/0	3/0 7 STR	7.980 [203]	1.220 [31]	1.156 [.52]	50
GL120M	.500 - .560 [12.6 - 14.2]	120	--	4/0 7 STR	7.980 [203]	1.220 [31]	1.137 [.52]	50

ITEM NO.	DESCRIPTION	MATERIAL
1	SHELL	COPPER
2	CONE	COPPER
3	PLUG	BRASS
4	SPRING	STAINLESS STEEL OR GALVANIZED STEEL
5	CENTER STOP	STAINLESS STEEL

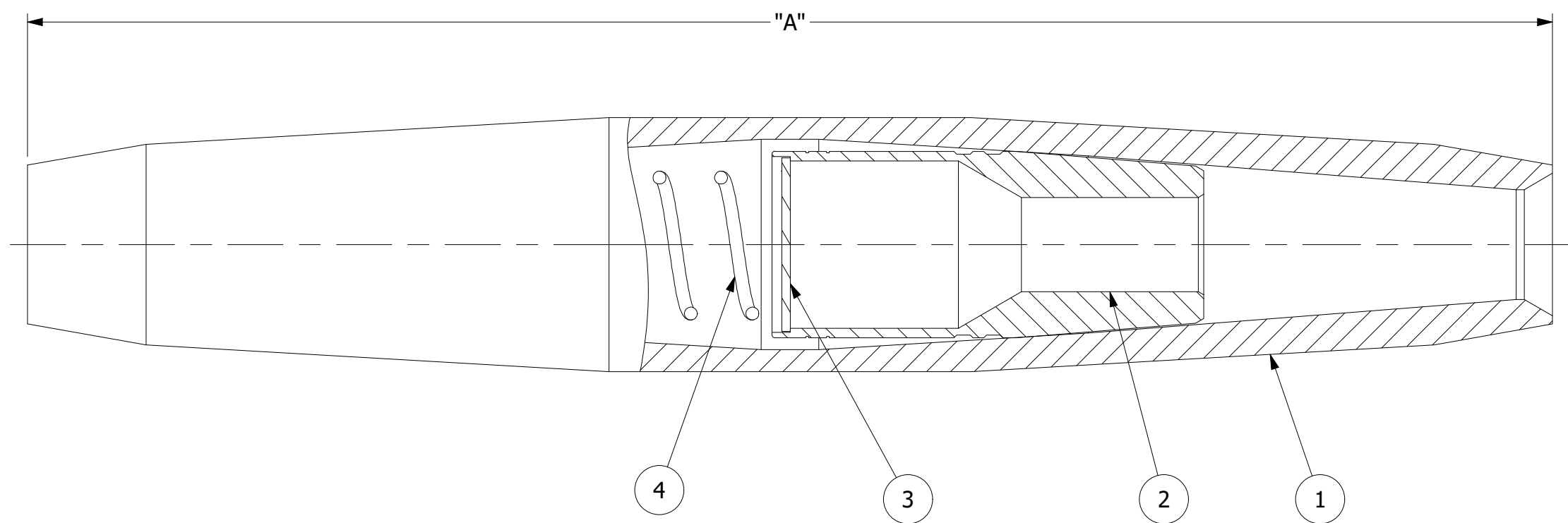
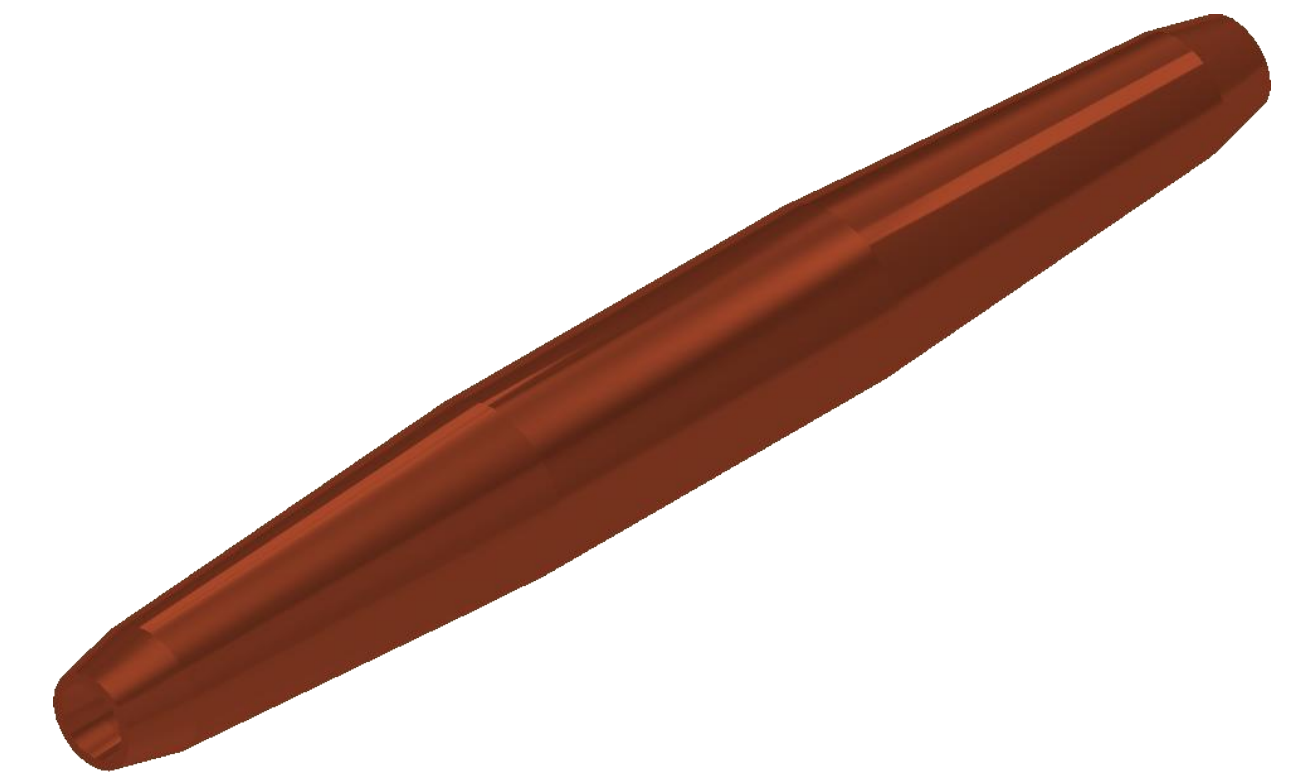


FIG. 1

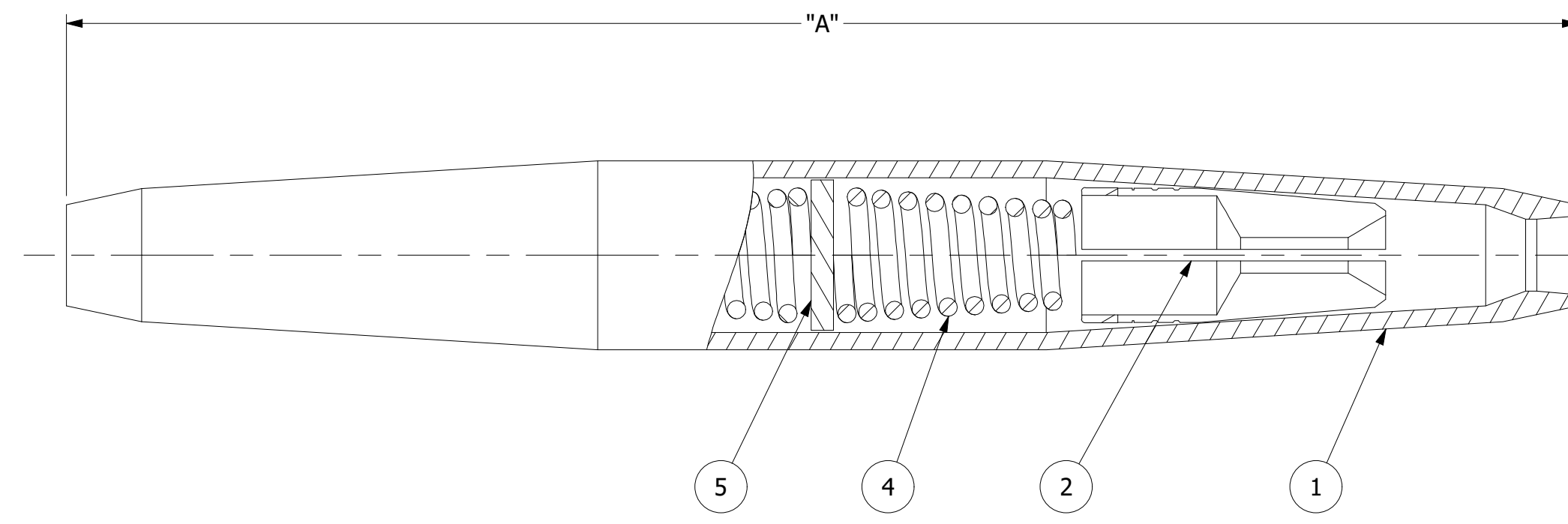
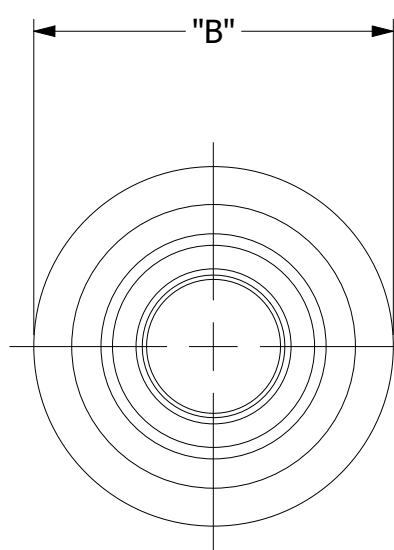
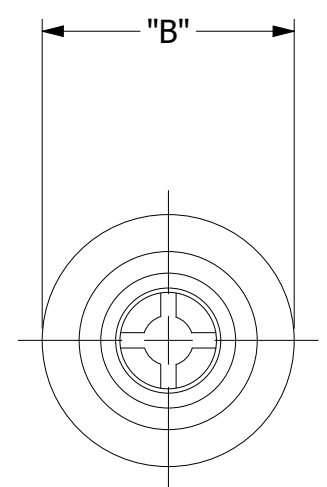


FIG. 2



- NOTES:
- ALL DIMENSIONS ARE FOR REFERENCE ONLY. DISTANCE IN. [MM], FORCE LBS. [kN], TORQUE IN. LBS. [N.m], & WEIGHT LBS. [KG]
 - RATINGS:
 - CONSULT FACTORY FOR RATING.
 - CONSULT FACTORY FOR COPPER WELD SIZES.
 - CERTIFICATIONS, SPECIFICATIONS, & STANDARDS:
 - MEETS COPPER STABILITY REQUIREMENTS PER ANSI C119.4
 - SUFFIXES & VARIANT CONFIGURATION:
 - "M" - METRIC CONDUCTOR (EX: GL110M)

EC #	DATE	KM CHANGED BY	SI CHECKED BY	SP APPROVED BY	WEIGHT, LBS
					SEE TABLE
DESCRIPTION: STANDARD CONDUCTORS INCLUDED					
UPDATED TEMPLATE					
ADDITIONAL COMMENTS: --					

THIRD ANGLE PROJECTION

CONFIDENTIAL: THIS DRAWING AND ITS CONTENTS ARE CONFIDENTIAL AND THE EXCLUSIVE PROPERTY OF HUBBELL POWER SYSTEMS, INC. NO PUBLICATION, DISTRIBUTION OR COPIES MAY BE MADE WITHOUT THE WRITTEN CONSENT OF HUBBELL POWER SYSTEMS, INC. HUBBELL POWER SYSTEMS UNPUBLISHED ALL RIGHTS RESERVED UNDER THE COPYRIGHT LAWS

HUBBELL POWER SYSTEMS, Inc.

TITLE: **OVERHEAD LINE SPLICES COPPER CONDUCTOR**

CATALOG NUMBER: **SEE TABLE**

SIZE	DWG NO.	PART / ASSY NO.	REV
D	CC-25239	SEE TABLE	02

SCALE: 3 : 2 DRN BY: JT DATE: 12/22/17 SHEET 1 OF 1