

FIG. NO.	CATALOG NUMBER	CU LARGE END SOLID	CU LARGE END STRAND	CU SMALL END SOLID	CU SMALL END STRAND	ACSR LARGE END	ACSR SMALL END	DIM A	DIM B	APPROX. WT. EACH LB. [KG]	STANDARD PACK
1	GL150	4	-	6	-	-	-	4 [100]	.560 [14]	0.137 [0.06]	100
1	GL151	3	4	6	-	-	-	4 [100]	.560 [14]	0.137 [0.06]	100
1	GL152	3	4	4	-	-	-	4 [100]	.560 [14]	0.127 [0.05]	100
1	GL153	2	3	6	-	-	-	5 [130]	.750 [19]	0.274 [0.12]	100
1	GL154	2	3	4	-	-	-	5 [130]	.750 [19]	0.307 [0.13]	100
1	GL155	1	2	6	-	-	-	5 [130]	.750 [19]	0.284 [0.12]	100
1	GL156	1	2	4	-	-	-	5 [130]	.750 [19]	0.294 [0.13]	100
1	GL157	1	2	3	4	-	-	5 [130]	.750 [19]	0.284 [0.12]	100
1	GL158	1	2	2	3	-	-	5 [130]	.750 [19]	0.265 [0.12]	100
1	GL159	1/0	1	3	4	-	-	5 [130]	.750 [19]	0.270 [0.123]	100
1	GL160	1/0	1	2	3	-	-	5 [130]	.750 [19]	0.265 [0.12]	100
1	GL161	1/0	1	1	2	-	-	5 [130]	0.750 [19]	0.265 [0.12]	100
1	GL162	2/0	1/0	3	4	-	-	6 [150]	0.940 [24]	0.484 [0.21]	100
1	GL163	2/0	1/0	2	3	-	-	6 [150]	0.940 [24]	0.559 [0.25]	100
1	GL164	2/0	1/0	1	2	-	-	6 [150]	0.940 [24]	0.559 [0.25]	100
1	GL165	2/0	1/0	4	-	-	-	6 [150]	0.940 [24]	0.559 [0.25]	100
1	GL166	2/0	1/0	1/0	1	-	-	6 [150]	0.940 [24]	0.608 [0.27]	100
1	GL168	3/0	2/0	2	3	-	-	6 [150]	0.940 [24]	0.559 [0.25]	100
1	GL169	3/0	2/0	1	2	-	-	6 [150]	0.940 [24]	0.500 [0.23]	100
1	GL170	3/0	2/0	1/0	1	-	-	6 [150]	0.940 [24]	0.549 [0.24]	100
1	GL171	3/0	2/0	2/0	1/0	-	-	6 [150]	0.940 [24]	0.490 [0.22]	100
1	GL172	4/0	3/0	3/0	2/0	-	-	7.400 [190]	1.300 [33]	1.058 [0.48]	50
1	GL173	-	4/0	2/0	1/0	-	-	7.400 [190]	1.300 [33]	1.117 [0.50]	50
1	GL174	-	4/0	3/0	2/0	-	-	7.400 [190]	1.300 [33]	1.058 [0.48]	50
1	GL175	-	4/0	4/0	3/0	-	-	7.400 [190]	1.300 [33]	1.065 [0.48]	50
1	GL176	-	250	-	4/0	-	-	7.400 [190]	1.300 [33]	1.058 [0.48]	50
2	GL406A4042A	-	-	-	-	1/0	4 - 2	12.100 [307]	1.200 [30]	0.402 [0.18]	25
2	GL412411	-	-	-	-	397.5	336.4	21 [530]	2.000 [51]	2.156 [0.97]	25

COPPER REDUCING SPLICES		
ITEM	DESCRIPTION	MATERIAL
1	TUBE	COPPER
2	CONE	BRONZE
3	SPRING	STAINLESS STEEL OR GALVANIZED STEEL
ACSR REDUCING SPLICE		
ITEM	DESCRIPTION	MATERIAL
1	TUBE	ALUMINUM
2	NOSE GUIDE	PLASTIC
3	JAW	ALUMINUM
4	SPRING	GALVANIZED STEEL
5	CENTERSTOP	PLASTIC
6	PILOT CUP	STEEL

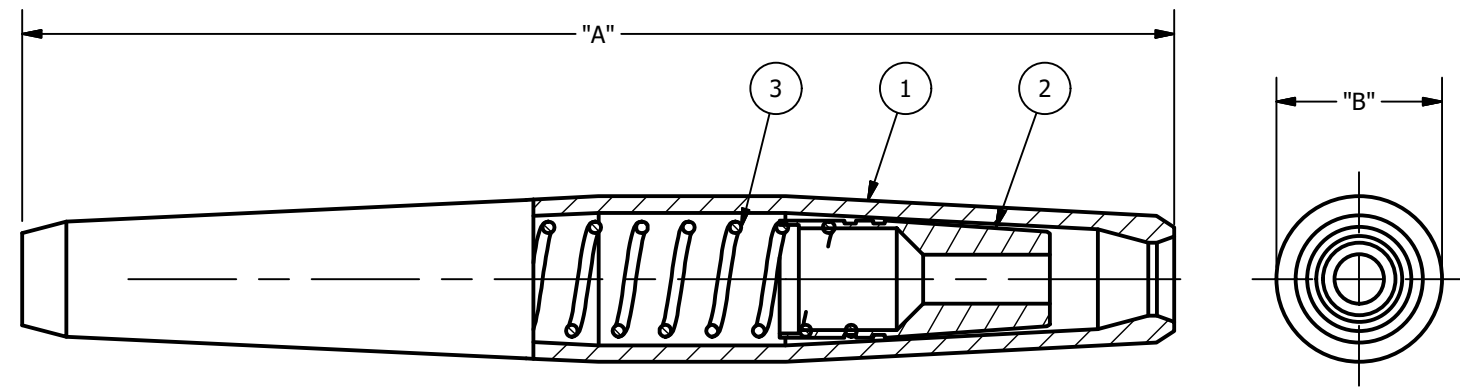


FIG-1 COPPER

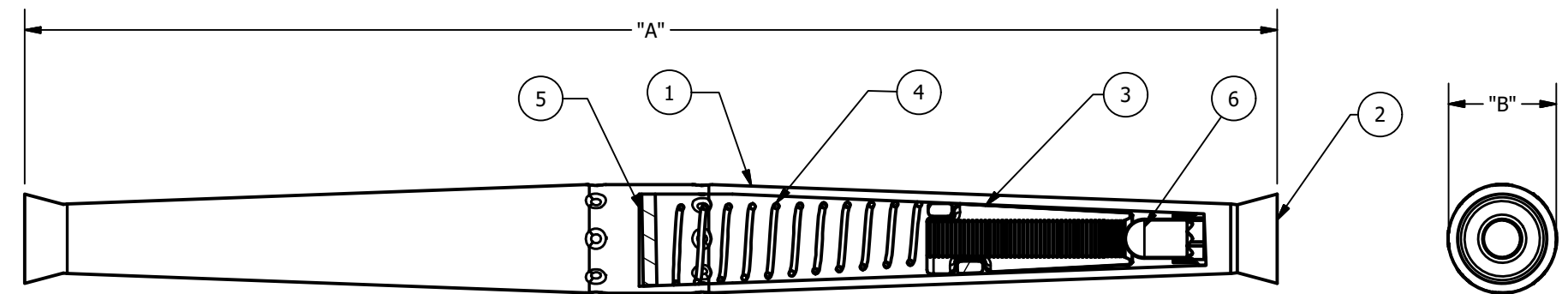
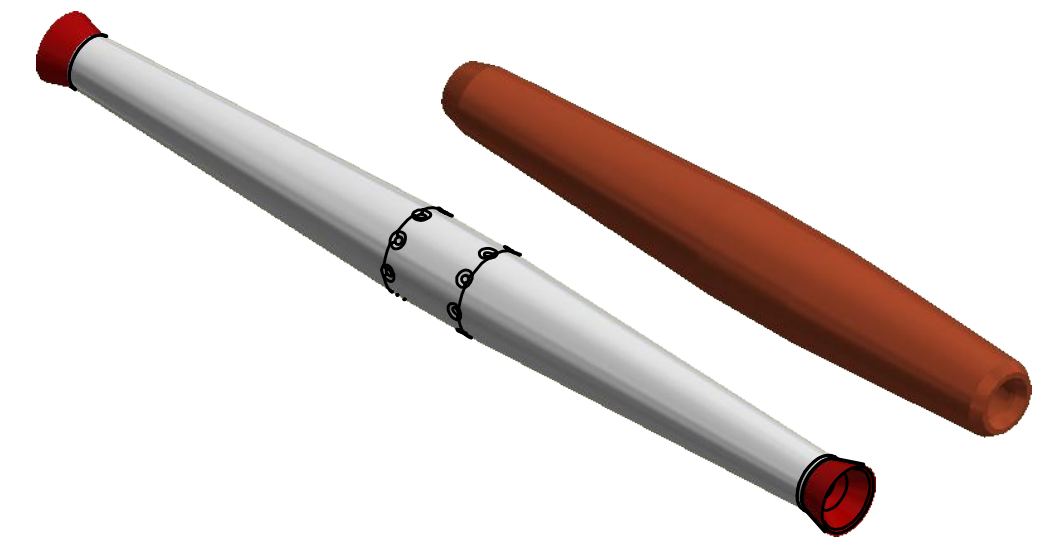


FIG-2 ACSR



NOTES:
 1. ALL DIMENSIONS FOR REFERENCE ONLY. DISTANCE IN. [MM], FORCE LBS. [kN], TORQUE IN. LBS. [N.m], & WEIGHT LBS. [KG].
 2. RATINGS:
 A. CONSULT FACTORY FOR RATING.

75536	08/29/18	JT	SD	HPS	HUBBELL POWER SYSTEMS POWER SYSTEMS, INC.
EC #	DATE	CHG BY	RESP ENG		
DESC OF DWG: INITIAL RELEASE				CONFIDENTIAL: THIS DRAWING AND ITS CONTENTS ARE CONFIDENTIAL AND THE EXCLUSIVE PROPERTY OF HUBBELL POWER SYSTEMS. NO PUBLICATION, DISTRIBUTION OR COPIES MAY BE MADE WITHOUT THE WRITTEN CONSENT OF HUBBELL POWER SYSTEMS. HUBBELL POWER SYSTEMS UNPUBLISHED ALL RIGHTS RESERVED UNDER THE COPYRIGHT LAWS	TITLE OVERHEAD AUTOMATIC REDUCING SPLICE
REASON (S) FOR CHANGE: DISPOSITION OF MAT'L:					
SIZE C	DWG NO. CC-25240	CAT / PART / ASSY NO. SEE TABLE	REV 00	DO NOT SCALE THIS DRAWING	
DRN BY JT		DATE 12/27/2017	SHEET 1 OF 1		