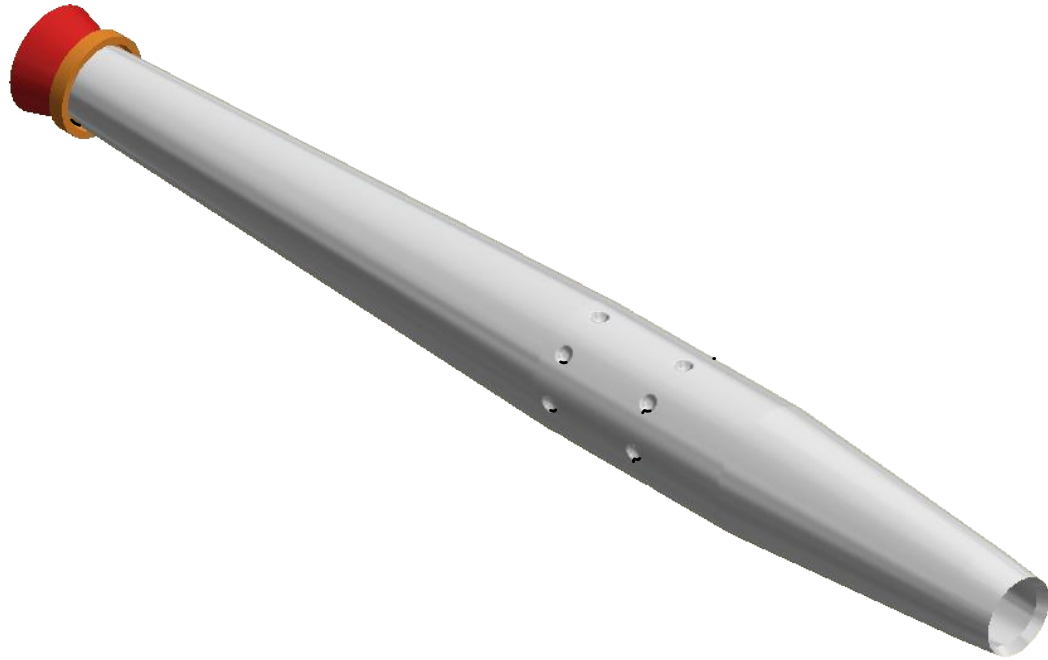
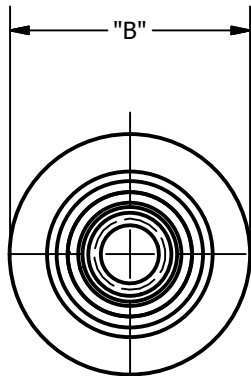
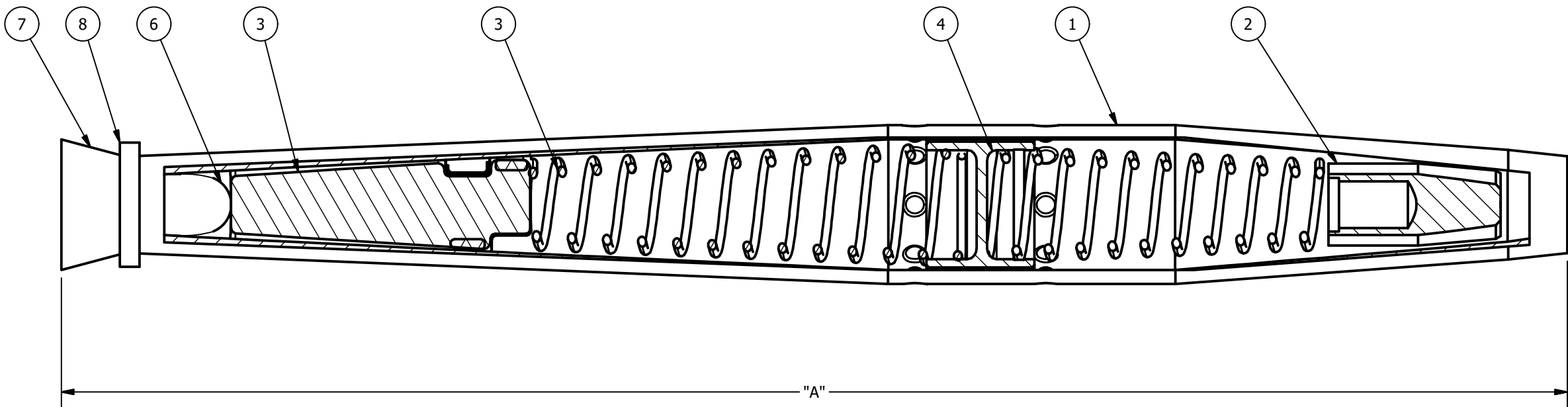



CATALOG NUMBER	CU SOLID	CU STRAND	ACSR (MIN-MAX)	AAAC (MIN-MAX)	AAC (MIN-MAX)	DIM A	DIM B	APPROX. WT. EACH LB. [KG]	STANDARD PACK
GL113195A	3	4	--	2/0 - 3/0	3/0 - 4/0	8.5 [220]	1.3 [33]	0.568 [0.25]	50
GL114185A	2	3	--	1/0	1/0 - 2/0	8.5 [220]	1.3 [33]	0.363 [0.16]	100
GL114195A	2	3	--	2/0 - 3/0	3/0 - 4/0	8.5 [220]	1.3 [33]	0.549 [0.24]	50
GL117018A	2/0	1/0	--	1/0	2/0	8.5 [220]	1.3 [33]	0.353 [0.16]	100
GL118195A	3/0	2/0	--	2/0 - 3/0	3/0 - 4/0	8.5 [220]	1.3 [33]	0.510 [0.23]	50
GL4042A11	6	--	2 - 4	2 - 4	2 - 4	9.4 [239]	1.0 [25]	0.392 [0.17]	25
GL4042A12	4	6	2 - 4	2 - 4	2 - 4	9.4 [239]	1.0 [25]	0.353 [0.16]	25
GL4042A13	3	4	2 - 4	2 - 4	2 - 4	9.4 [239]	1.0 [25]	0.353 [0.16]	25
GL40615	1	2	1/0	1/0	1/0	13 [331]	1.3 [33]	0.784 [0.35]	25
GL41118	3/0	2/0	336.4 (18/1)	394.5	397.5	15.500 [331]	1.8 [46]	1.568 [0.71]	25
GL41223	--	300	397.5 (18/1)	465.4	477	18 [450]	2.0 [51]	2.13 [0.97]	25

ITEM	DESCRIPTION	MATERIAL
1	TUBE	ALUMINUM
2	CONE	COPPER
3	SPRING	GALVANIZED STEEL
4	CENTERSTOP	PLASTIC
5	JAW	ALUMINUM
6	PILOT CUP	STEEL
7	NOSE GUIDE	PLASTIC
8	ID RING	PLASTIC



NOTES:  
1. ALL DIMENSIONS FOR REFERENCE ONLY. DISTANCE IN. [MM], FORCE LBS. [kN], TORQUE IN. LBS. [N.m], & WEIGHT LBS. [KG].  
2. RATINGS:  
A. CONSULT FACTORY FOR RATING.

75536		08/29/18		JT		SD		HPS	 HUBBELL POWER SYSTEMS						
EC #		DATE		CHG BY		RESP ENG			TITLE						
DESC OF DWG: INITIAL RELEASE								CONFIDENTIAL: THIS DRAWING AND ITS CONTACTS ARE CONFIDENTIAL AND THE EXCLUSIVE PROPERTY OF HUBBELL POWER SYSTEMS. NO PUBLICATION, DISTRIBUTION OR COPIES MAY BE MADE WITHOUT THE WRITTEN CONSENT OF HUBBELL POWER SYSTEMS. HUBBELL POWER SYSTEMS UNPUBLISHED ALL RIGHTS RESERVED UNDER THE COPYRIGHT LAWS	BIMETALIC AUTOMATIC SPLICE COPPER TO ALUMINUM						
									SIZE C		DWG NO. CC-25242		CAT / PART / ASSY NO. SEE TABLE		REV 00
REASON (S) FOR CHANGE: DISPOSITION OF MAT'L:								DO NOT SCALE THIS DRAWING		DRN BY JT		DATE 12/21/2017		SHEET 1 OF 01	