

FIG. NO.	CATALOG NUMBER	CONDUCTOR RANGE MAIN (MIN. - MAX.)	CONDUCTOR RANGE TAP (MIN. - MAX.)	ACSR MAIN (MIN. - MAX.)	AAC MAIN (MIN. - MAX.)	ACSR TAP (MIN. - MAX.)	AAC/CU TAP (MIN. - MAX.)	DIM A	DIM B	DIM C	WRENCH / TOOL SIZE	EYEBOLT HARDWARE	APPROX. WT. EACH LB. [KG]	STANDARD PACK
1	S1520AA	.158 - .414 [4.01 - 10.54]	.128 - .414 [3.25 - 10.54]	.158 - .398 #8 - 1/0	#6 - 2/0	#8 - 1/0	#8 SOL. - 2/0 STR.	15°	1.000 [25.40]	5.250 [133.00]	9/16"	3/8"	.400 [.18]	100
3	S1530AA*	.184 - .743 [4.67 - 18.87]	.162 - .528 [4.01 - 13.41]	#6 - 397.5 (18/1) MCM	#6 - 397.5 MCM	#6 - 3/0	#6 SOL. - 4/0 STR.	60°	1.750 [44.00]	7.130 [181.00]	11/16"	7/16"	.640 [.29]	50
3	S1534AGP	.184 - .743 [4.67 - 18.87]	.162 - .528 [4.01 - 13.41]	#6 - 397.5 (18/1) MCM	#6 - 397.5 MCM	#6 - 3/0	#6 SOL. - 4/0 STR.	60°	1.750 [44.00]	7.130 [181.00]	3/4"	7/16"	.640 [.29]	50
3	S1540AA	.502 - 1.027 [12.78 - 26.09]	.198 - .681 [5.03 - 17.30]	3/0 (6/1) - 636 (30/19) MCM	4/0 - 795 MCM	#6 - 266.8 MCM	#4 SOL. - 350 MCM	60°	1.810 [46.00]	7.310 [186.00]	3/4"	1/2"	.980 [.40]	50
3	S1545AA	.953 - 1.466 [24.21 - 37.24]	.198 - .681 [5.03 - 17.30]	556.5 (30/7) - 1510 (45/7) MCM	700 - 1590 MCM	#6 - 266.8 MCM	#4 SOL. - 300 MCM	60°	2.190 [56.00]	9.630 [245.00]	3/4"	1/2"	1.350 [0.61]	20
2	S1535AA	.250 - .806 [6.36 - 20.51]	.232 - .806 [5.89 - 20.47]	#4 - 397.5 MCM	#3 - 477 (37/1)	#8 - 397.5 MCM	#4 - 477 (37/1)	18°	2.000 [50.80]	7.750 [196.00]	3/4"	1/2"	.880 [.40]	50

ITEM	DESCRIPTION	MATERIAL
1	BODY	ALUMINIUM
2	GRIPPER	ALUMINIUM
3	LOCKWASHER	STAINLESS STEEL
4	EYESTEM	BRONZE OR STAINLESS STEEL
5	PIN	STAINLESS STEEL
6	EYEBOLT	TIN PLATED BRONZE
7	LOCK WASHER	STAINLESS STEEL
8	NUT	STAINLESS STEEL
9	GRIPPER	ALUMINIUM
10	BOLT	ALUMINIUM
11	WASHER	ALUMINIUM

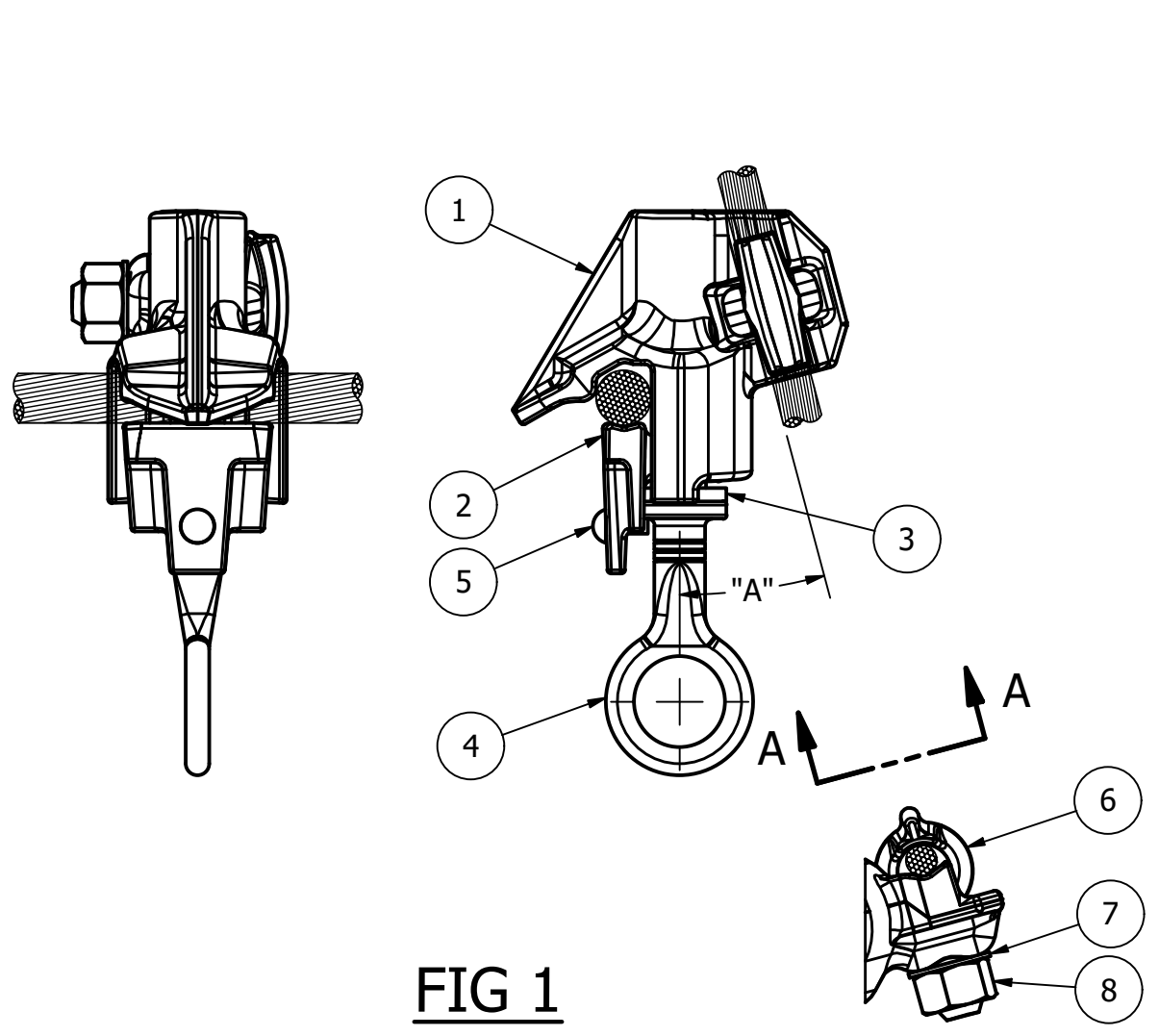


FIG 1

SECTION A-A

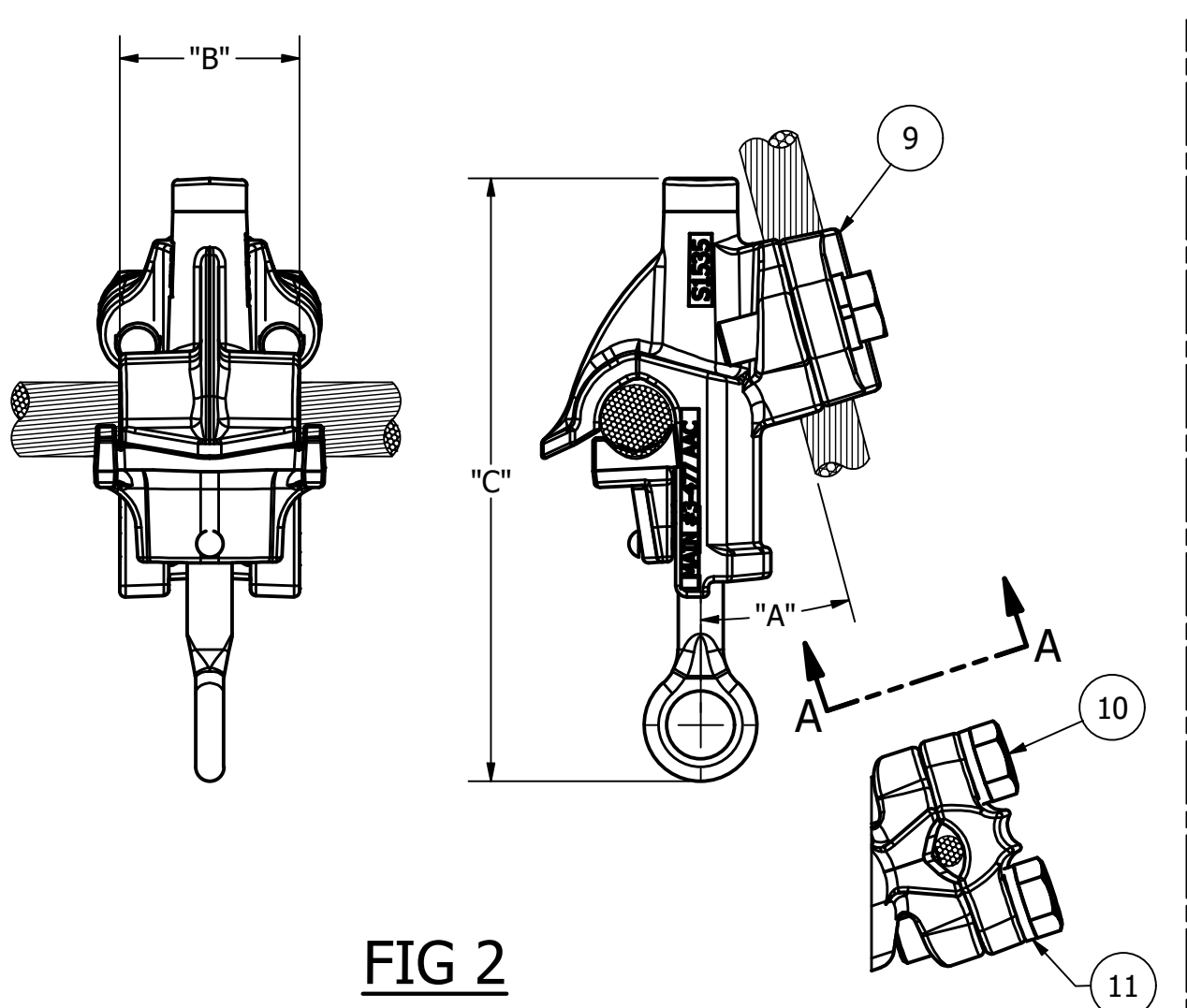


FIG 2

SECTION A-A

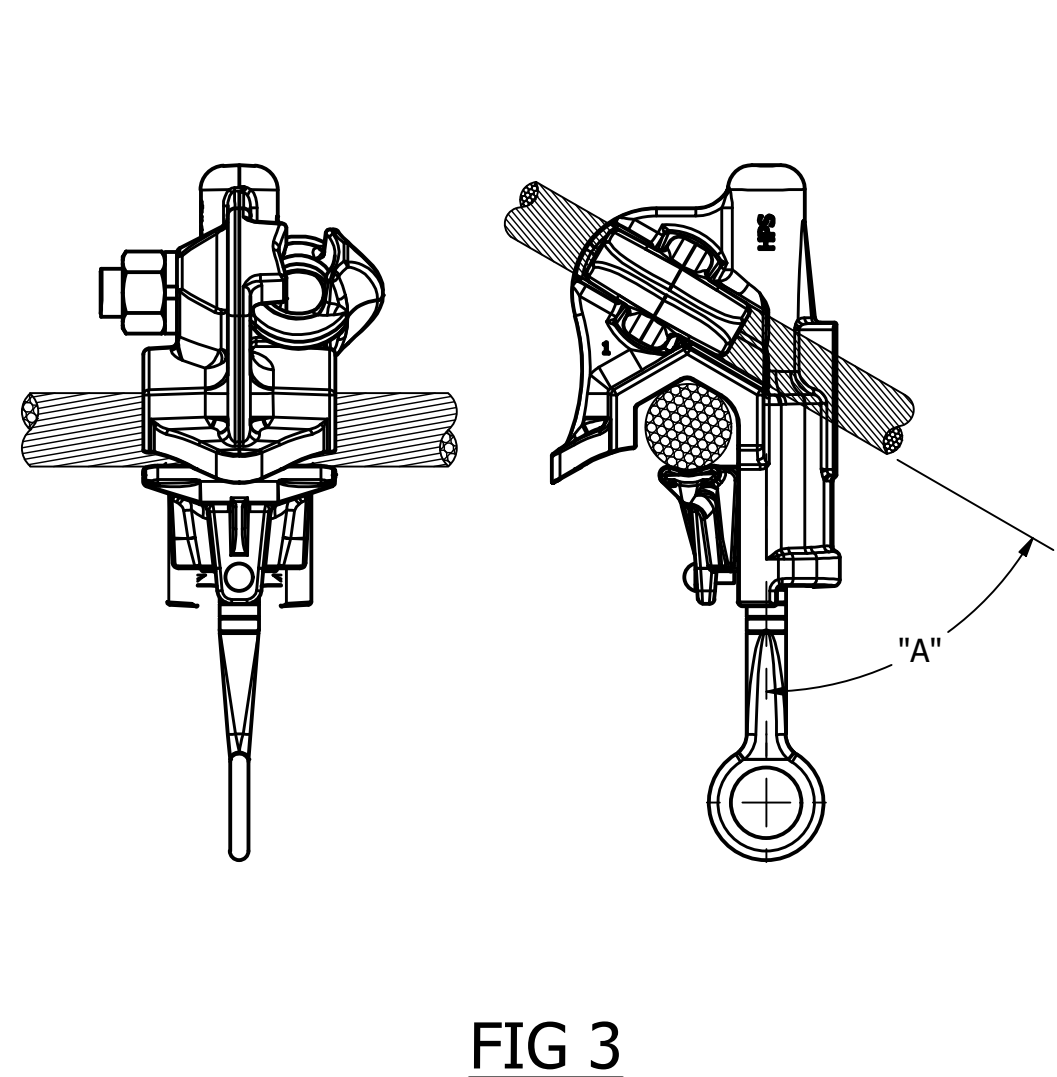


FIG 3

NOTES:

- ALL DIMENSIONS FOR REFERENCE ONLY. DISTANCE IN. [MM], FORCE LBS. [kN], TORQUE IN. LBS. [N.m], & WEIGHT LBS. [KG].
- RATINGS:
 - A. RECOMMENDED TORQUE: EYEBOLT - 3/8" : 240 IN-LBS, 27 N.m
1/2" : 480 IN-LBS, 54 N.m
 - EYESTEM - 200 IN-LBS, 23 N.m
- CERTIFICATIONS, SPECIFICATIONS & STANDARDS
 - A. RUS LISTED*
 - B. ANSI C119.4
- A SUFFIX IS ADDED TO THE CATALOG NUMBER TO DESIGNATE THE REQUIRED FITTINGS AS SHOWN IN THE TABULATION (EXAMPLE: S1545AGP):
 - "AGP" - FOR ALUMINIUM TIN PLATING REPLACE "AA" WITH "AGP"
 - "AC" - FOR BI METALLIC WASHER REPLACE "AA" WITH "AC" (ONLY AVAILABLE FOR S1530)
 A PREFIX IS ADDED TO THE CATALOG NUMBER TO DESIGNATE THE REQUIRED FITTINGS AS SHOWN IN THE TABULATION (EXAMPLE: P1545AA):
 - "P" - FACTORY INHIBITED AND BAGGED

210405006819	04/05/21	SAV	SI	HPS.	
EC #	DATE	CHG BY	RESP ENG		
DESC OF DWG: S1520AA BODY MODEL HAS BEEN UPDATED				CONFIDENTIAL: THIS DRAWING AND ITS CONTACTS ARE CONFIDENTIAL AND THE EXCLUSIVE PROPERTY OF HUBBELL POWER SYSTEMS. NO PUBLICATION, DISTRIBUTION OR COPIES MAY BE MADE WITHOUT THE WRITTEN CONSENT OF HUBBELL POWER SYSTEMS. HUBBELL POWER SYSTEMS UNPUBLISHED ALL RIGHTS RESERVED UNDER THE COPYRIGHT LAWS	HUBBELL® POWER SYSTEMS TITLE S15XX CLAMP, HOT LINE, AL (CU TAP)
REASON (S) FOR CHANGE: DISPOSITION OF MAT'L:					
				DO NOT SCALE THIS DRAWING	DRN BY SD DATE 11/23/2018 SHEET 1 OF 1