

4

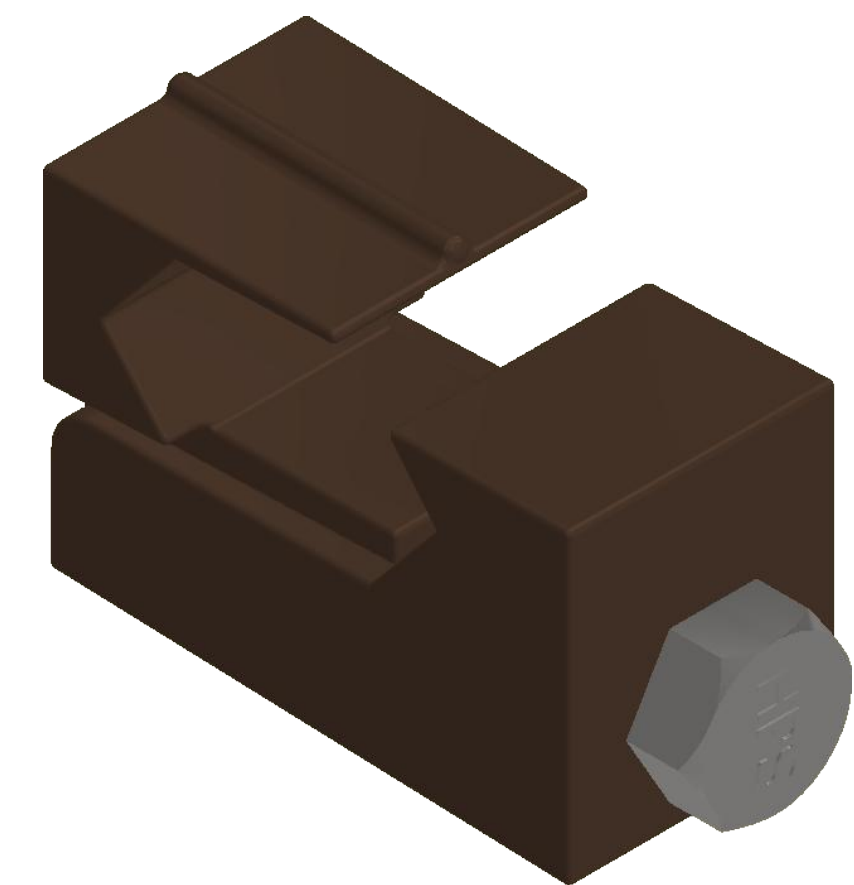
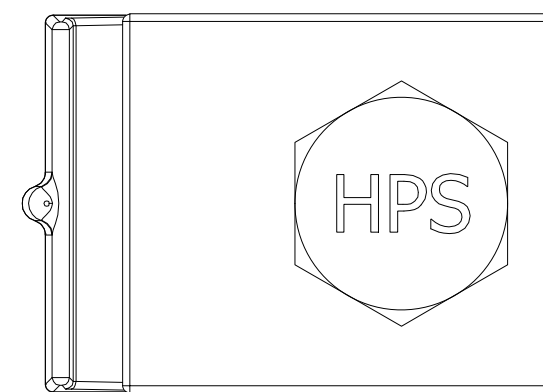
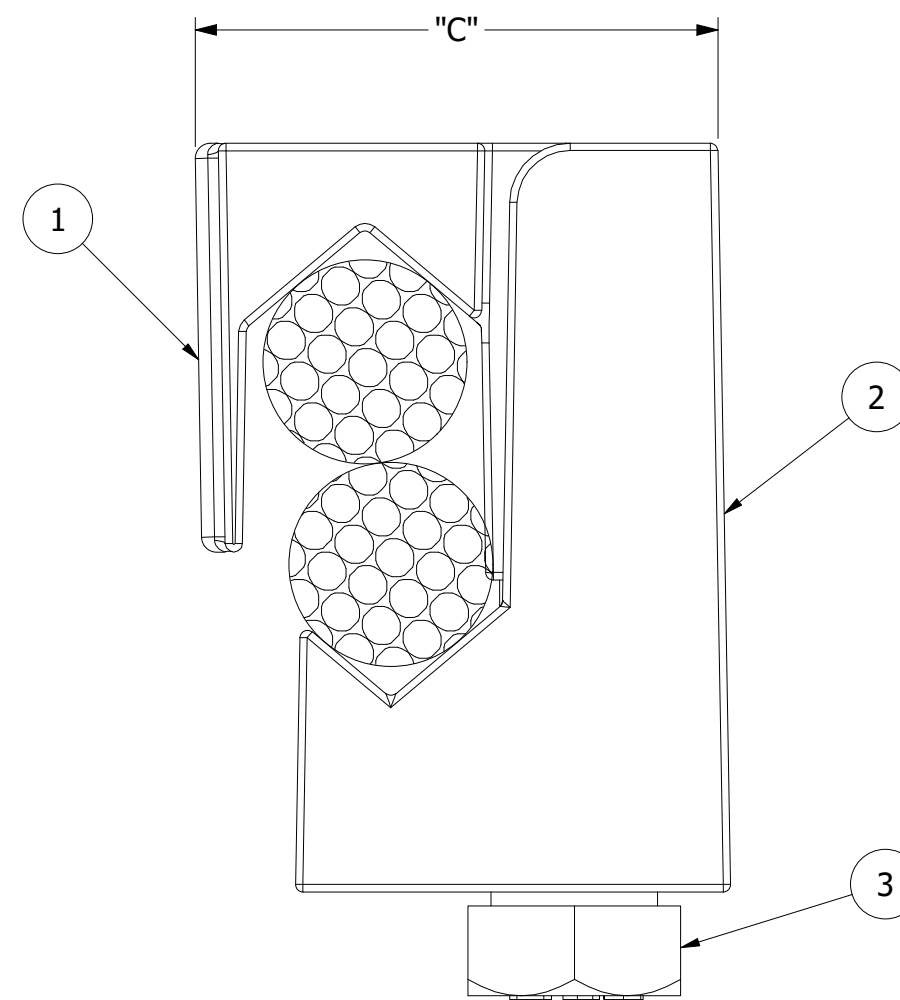
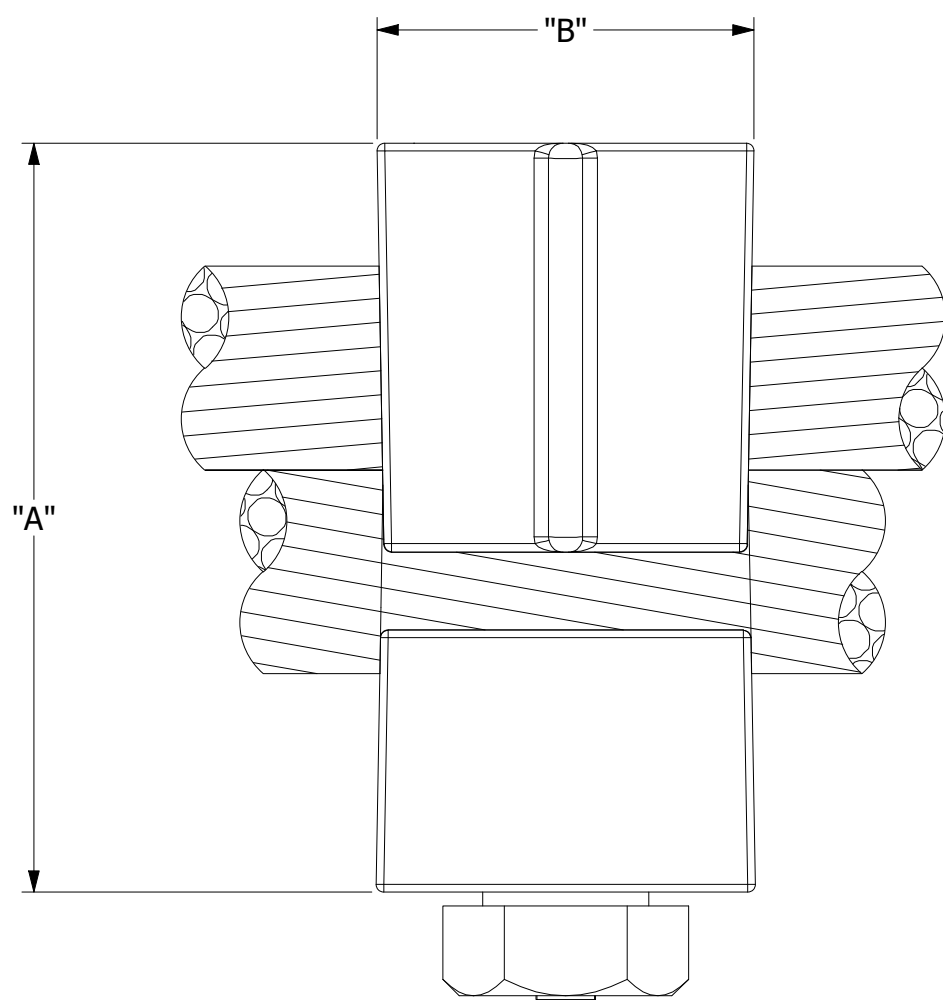
3

2

1

CATALOG NUMBER	DIA. RANGE (2 COND. COMBO.) DIA. EA. COND. (MIN. - MAX.)	CU CONDUCTOR RANGE 2 CONDUCTORS (MIN. - MAX.)	DIM A	DIM B	DIM C	THREAD SIZE	HARDWARE BOLT HEAD (HEX.)	APPROX. WT. EACH LB. [KG]	STANDARD PACK
GC5008	.091 - .146 [2.32 - 3.72]	#11 SOL. - #8 STR.	.875 [22.70]	.625 [15.91]	.625 [15.91]	1/4 [6.35]	3/8 [10.00]	.060 [.03]	50
GC5006	.101 - .162 [2.57 - 4.12]	#10 SOL. - #6 SOL.	1.000 [25.45]	.625 [15.91]	.750 [19.09]	1/4 [6.35]	3/8 [10.00]	.090 [.04]	50
GC5004	.128 - .232 [3.26 - 5.90]	#8 SOL. - #4 STR.	1.250 [31.81]	.625 [15.91]	.875 [22.27]	5/16 [7.94]	9/16 [14.00]	.160 [.07]	50
GC5002	.162 - .286 [4.12 - 7.28]	#6 SOL. - #2 SOL.	1.375 [34.99]	.750 [19.09]	1.000 [25.45]	5/16 [7.94]	9/16 [14.00]	.180 [.08]	50
GC5002S	.181 - .320 [4.61 - 8.14]	#5 SOL. - #2 STR.	1.625 [41.36]	.750 [19.09]	1.000 [25.45]	5/16 [7.94]	9/16 [14.00]	.180 [.08]	50
GC5020	.204 - .390 [5.19 - 9.93]	#4 SOL. - 1/0 STR.	1.875 [47.72]	.750 [19.09]	1.125 [28.63]	5/16 [7.94]	9/16 [14.00]	.280 [.13]	50
GC5020S	.229 - .438 [5.83-11.15]	#3 SOL. - 2/0 STR.	2.000 [54.08]	.875 [22.27]	1.250 [31.81]	3/8 [9.53]	9/16 [14.00]	.280 [.13]	50
GC5040	.289 - .552 [7.36 - 14.05]	#1 SOL. - 4/0 STR.	2.125 [54.08]	1.000 [25.45]	1.375 [34.99]	3/8 [9.53]	9/16 [14.00]	.480 [0.22]	50

ITEM	DESCRIPTION	MATERIAL
1	MALE CASTING	BRONZE
2	FEMALE CASTING	BRONZE
3	BOLT	STAINLESS STEEL



NOTES:

- ALL DIMENSIONS ARE FOR REFERENCE ONLY. DISTANCE IN. [MM], FORCE: LBS-Force [kN], TORQUE IN. LBS. [N.m], & WEIGHT LBS. [KG].
- RATINGS:
 - A. RECOMMENDED TORQUE: 1/4 THREAD SIZE - 120 IN.LBS
 - 5/16 THREAD SIZE - 180 IN.LBS
 - 3/8 THREAD SIZE - 240 IN.LBS
- CERTIFICATIONS, SPECIFICATIONS & STANDARDS:
 - A. * RUS LISTED.
 - B. ANSI C119.4
- A SUFFIX IS ADDED TO THE CATALOG NUMBER TO DESIGNATE THE REQUIRED FITTINGS AS SHOWN IN THE TABULATION (EXAMPLE:GC5020P) :
 - "P" - TIN PLATED CASTINGS
 - "SH" - SLOTTED HEX-HEAD BOLT

230825032954	08/25/23	KM	SI	SA
EC #	DATE	CHANGED BY	CHECKED BY	APPROVED BY
DESCRIPTION:				WEIGHT, LBS
THREAD SIZE INCLUDED TO TABLE				SEE TABLE
TORQUE AND NOTES UPDATED				
TEMPLATE UPDATED				
--				
--				
ADDITIONAL COMMENTS: --				

THIRD ANGLE PROJECTION

CONFIDENTIAL:
THIS DRAWING AND ITS CONTENTS ARE CONFIDENTIAL AND THE EXCLUSIVE PROPERTY OF HUBBELL POWER SYSTEMS. NO PUBLICATION, DISTRIBUTION OR COPIES MAY BE MADE WITHOUT THE WRITTEN CONSENT OF HUBBELL POWER SYSTEMS. HUBBELL POWER SYSTEMS UNPUBLISHED ALL RIGHTS RESERVED UNDER THE COPYRIGHT LAWS

HUBBELL POWER SYSTEMS, Inc.

TITLE: **CONNECTOR CU, VISE GROUNDING TYPE GC5XXX**

CATALOG NUMBER: **SEE TABLE**

SIZE	DWG NO.	PART / ASSY NO.	REV
C	CC-25775	SEE TABLE	01

SCALE: 2 : 1 DRN BY: SD DATE: 10/11/18 SHEET 1 OF 1

4

3

2

1