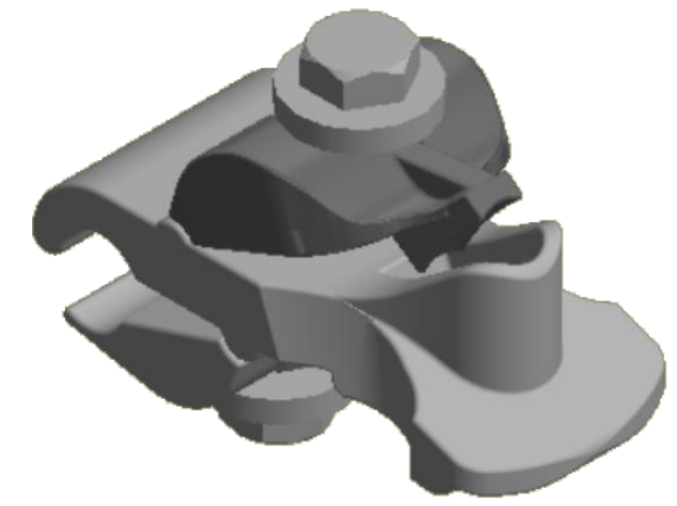
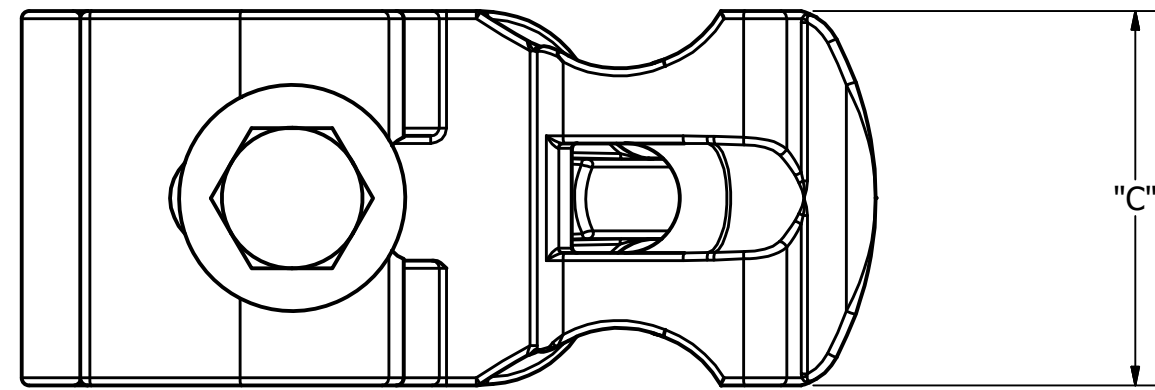
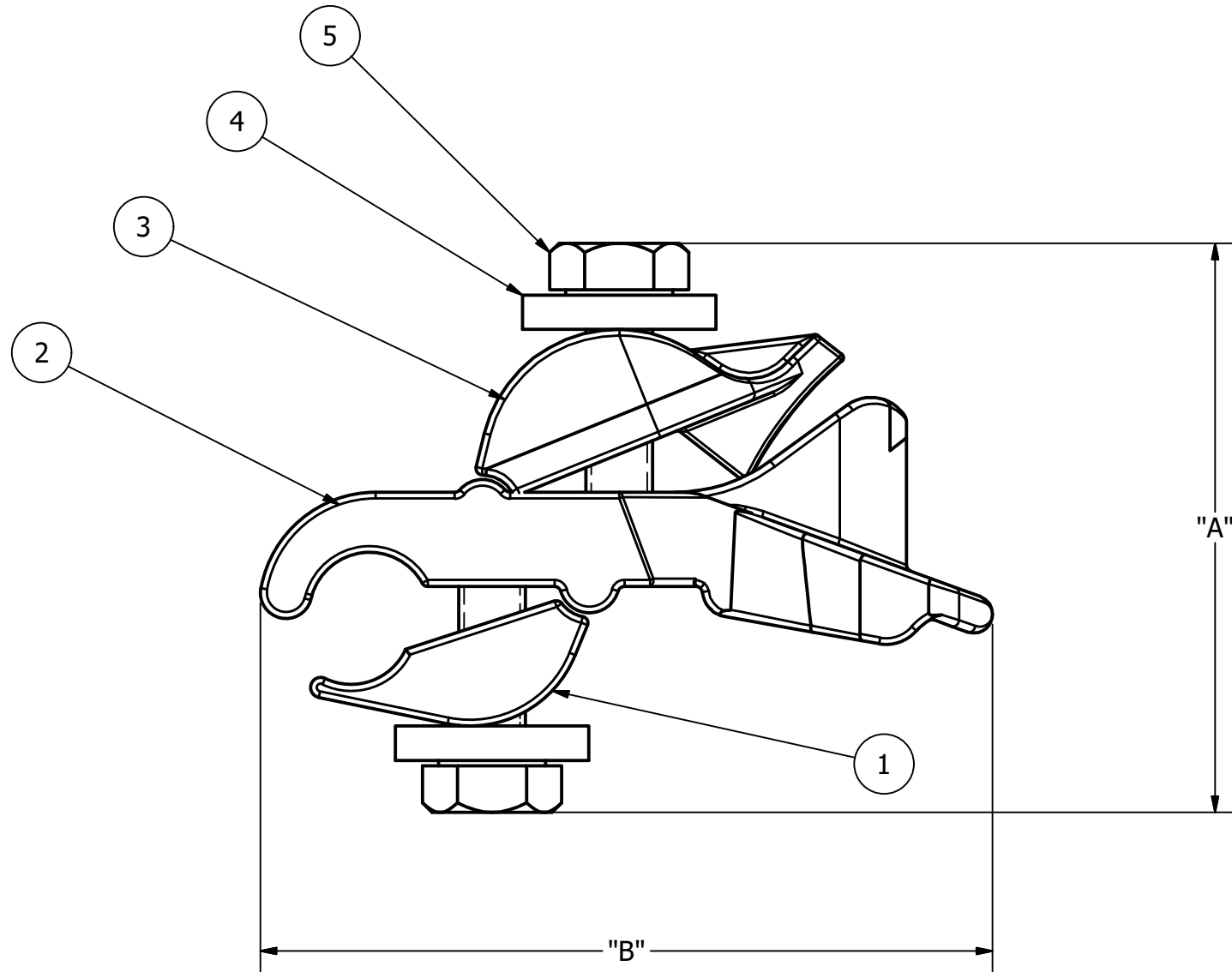


CATALOG NO.	RUN (MIN - MAX)	TAP (MIN - MAX)	NO. OF TAPS	DIM "A" APPROX	DIM "B" APPROX	DIM "C" APPROX	WEIGHT	STANDARD PACK
GM102A	1/0 - 4/0 ACSR	6-2 ACSR	1	2.750 [69.85]	3.375 [85.72]	1.500 [38.10]	.440 [.20]	50

ITEM	DESCRIPTION	MATERIAL
1	CASTING, RUN PAD	ALUMINUM
2	BODY, CLAMP	ALUMINUM
3	CASTING, TAP PAD	ALUMINUM
4	WASHER	ALUMINUM
5	5/16" HEX BOLT	STAINLESS STEEL



NOTES:

- ALL DIMENSIONS FOR REFERENCE ONLY. DISTANCE IN. [MM], FORCE LBS. [kN], TORQUE IN. LBS. [N.m], & WEIGHT LBS. [KG].
- RATINGS:
A. RECOMMENDED HARDWARE TORQUE: 180 IN. LBS.
- CERTIFICATIONS, SPECIFICATIONS, & STANDARDS:
A. NA
- SUFFIXES & VARIANT CONFIGURATION:
"L" - INHIBITOR PROTECTION AND INDIVIDUALLY BAGGED

79080	07/02/19	HD	RG	HPS.	HUBBELL® POWER SYSTEMS
EC #	DATE	CHG BY	RESP ENG		
DESC OF DWG: NEW CC-TEMPLATE INITIAL RELEASE				CONFIDENTIAL: THIS DRAWING AND ITS CONTACTS ARE CONFIDENTIAL AND THE EXCLUSIVE PROPERTY OF HUBBELL POWER SYSTEMS. NO PUBLICATION, DISTRIBUTION OR COPIES MAY BE MADE WITHOUT THE WRITTEN CONSENT OF HUBBELL POWER SYSTEMS. HUBBELL POWER SYSTEMS UNPUBLISHED ALL RIGHTS RESERVED UNDER THE COPYRIGHT LAWS	TITLE GM TAP DE IN-SPAN NEUTRAL
REASON (S) FOR CHANGE: DISPOSITION OF MAT'L:					SIZE: C DWG NO.: CC-26215 CAT / PART / ASSY NO.: GM102A REV: 00
				DO NOT SCALE THIS DRAWING	DRN BY: RG DATE: 07/02/19 SHEET: 1 OF 1