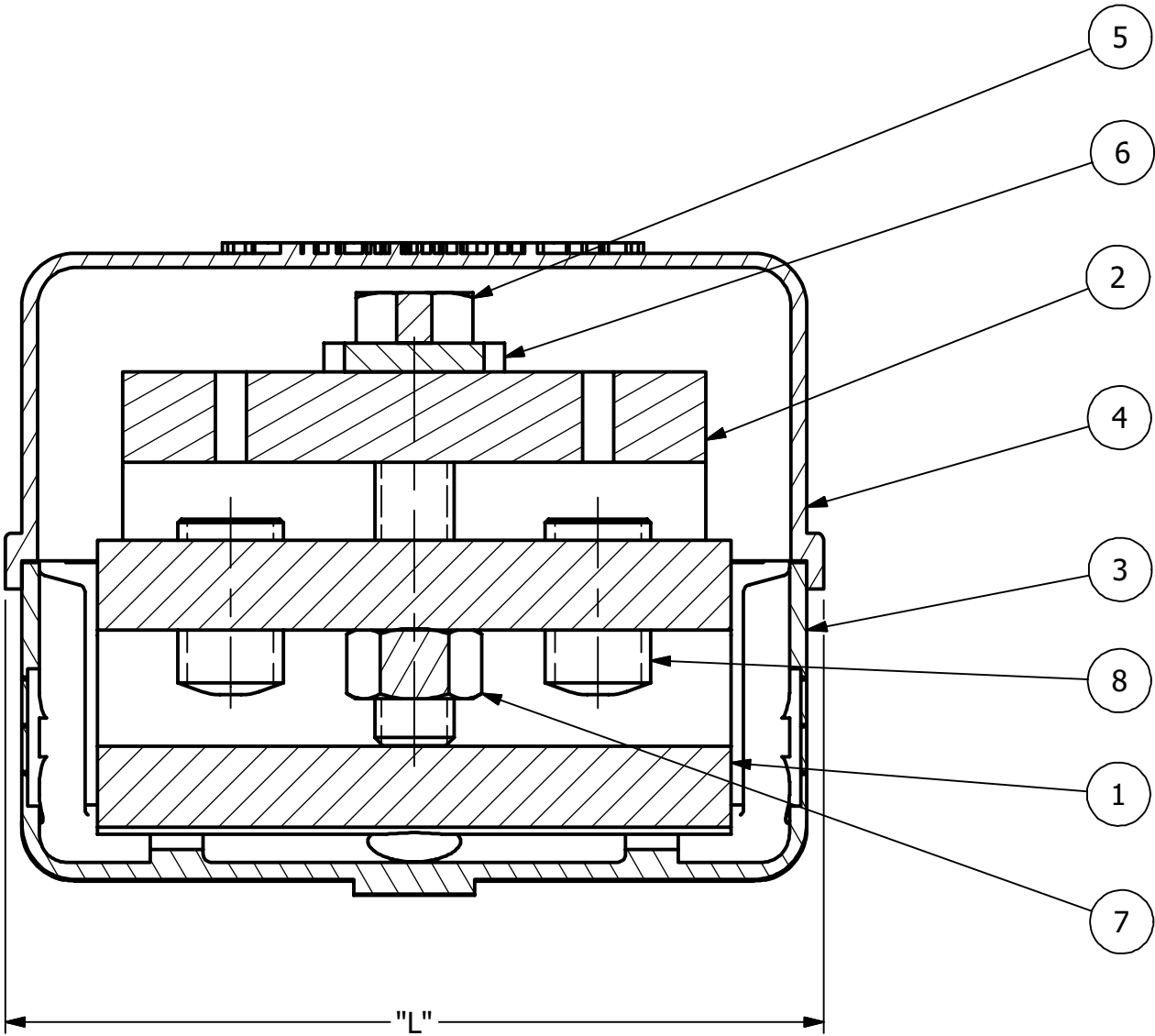
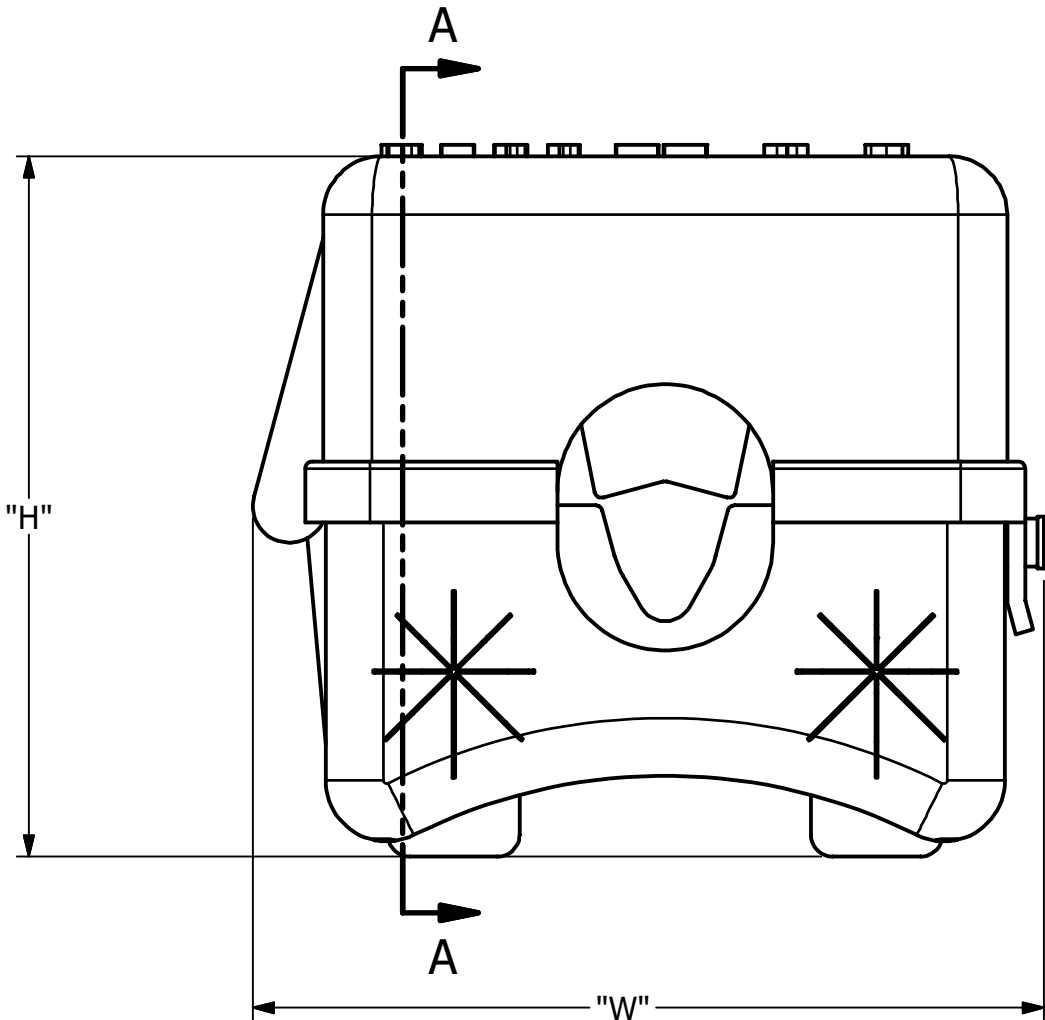
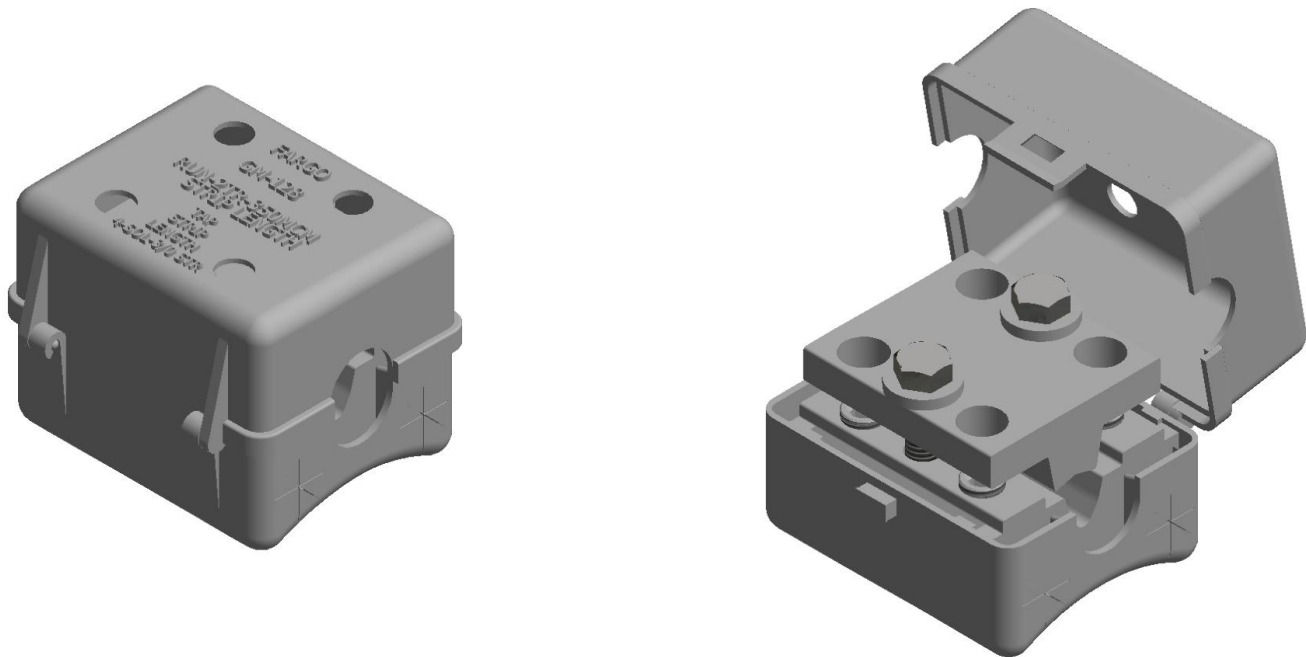


4		3				2		1		
CATALOG NO.	RANGE		APPROX. OVERALL DIMENSIONS			WEIGHT	STANDARD PACK	ITEM	DESCRIPTION	MATERIAL
	RUN (MIN. - MAX.)	TAP (MIN. - MAX.)	"L"	"W"	"H"			1	BODY	ALUMINUM
GM128AKL (CONNECTOR & HOUSING)	2 STR. - 350 KCMIL	4 SOL. - 3/0 STR.	3.813 [97.03]	3.250 [82.71]	3.000 [76.35]	1.200 [0.54]	25	2	WEDGE	ALUMINUM
GM128AL (CONNECTOR ONLY)	2 STR. - 350 KCMIL	4 SOL. - 3/0 STR.	3.313 [84.03]	2.625 [66.81]	2.000 [50.90]	1.040 [0.47]	25	3	HOUSING	PLASTIC
								4	COVER	ALUMINUM
								5	HEX BOLT	STAINLESS STEEL
								6	WASHER	STAINLESS STEEL
								7	HEX NUT	STAINLESS STEEL
								8	SOCKET SCREW	STAINLESS STEEL





SECTION A-A



NOTES:

1. ALL DIMENSIONS ARE FOR REFERENCE ONLY. DISTANCE IN. [MM], FORCE: LBS-Force [kN], TORQUE IN. LBS. [N.m], & WEIGHT LBS. [KG].
2. RATINGS:
- A. NA
3. CERTIFICATIONS, SPECIFICATIONS, & STANDARDS:
- A. NA
4. SUFFIXS & VARIANT CONFIGURATION:
- A. NA

230307028493	3/7/23	BM	SI	SP	 THIRD ANGLE PROJECTION	 HUBBELL POWER SYSTEMS, Inc.			
EC #	DATE	CHANGED BY	CHECKED BY	APPROVED BY		TITLE			
DESCRIPTION:				WEIGHT, LBS		GM128 IN-SPAN PHASE CONNECTOR AND HOUSING			
UPDATED TABLE LABEL				SEE TABLE	CONFIDENTIAL: THIS DRAWING AND ITS CONTENTS ARE CONFIDENTIAL AND THE EXCLUSIVE PROPERTY OF HUBBELL POWER SYSTEMS. NO PUBLICATION, DISTRIBUTION OR COPIES MAY BE MADE WITHOUT THE WRITTEN CONSENT OF HUBBELL POWER SYSTEMS. HUBBELL POWER SYSTEMS UNPUBLISHED ALL RIGHTS RESERVED UNDER THE COPYRIGHT LAWS	CATALOG NUMBER: SEE TABLE			
UPDATED TO NEW TEMPLATE						SIZE	DWG NO.	PART / ASSY NO.	REV
--						C	CC-26216	SEE TABLE	1
--						SCALE: 6 : 5		DRN BY: RG	DATE: 7/2/19
ADDITIONAL COMMENTS: --								SHEET 1 OF 1	