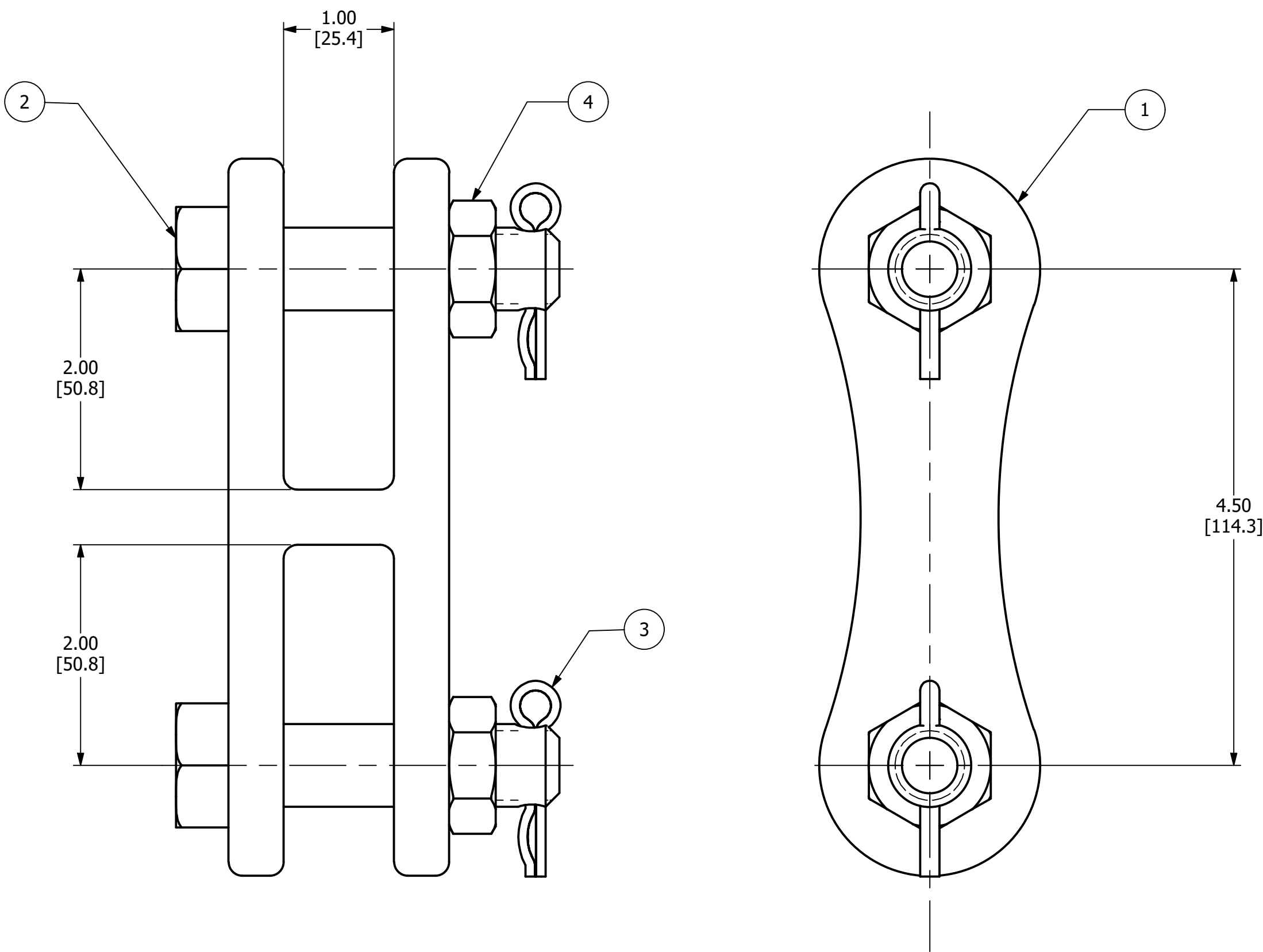


ITEM	DESCRIPTION	MATERIAL
1	CLEVIS EYE FORGING	GALVANIZED FORGED STEEL
2	3/4 CLEVIS BOLT	GALVANIZED STEEL
3	3/4 HEX NUT	GALVANIZED STEEL
4	COTTER KEY	STAINLESS STEEL



NOTES:

1. ALL DIMENSIONS FOR REFERENCE ONLY. DISTANCE IN. [MM], FORCE LBS. [kN], TORQUE IN. LBS. [N.m],& WEIGHT LBS. [KG]

2. RATINGS



A. ULTIMATE STRENGTH: SEE TABLE

3. SUFFIXS & VARIANT CONFIGURATION:

"BNK" - INCLUDES A BOLT, NUT, AND COTTER PIN

"CVN" - INDICATES HARDWARE GALV. PER CSA G164 AND CLEVIS BOLT CHARPY LEVEL 1 COMPLIANT

20 JOULES AT -20°C

200825000121	8/25/2020	TDO	NR	NR	<div> HUBBELL POWER SYSTEMS, Inc.</div>			
EC #	DATE	CHANGED BY	CHECKED BY	APPROVED BY		TITLE CLEVIS-CLEVIS ASSEMBLY		
DESCRIPTION: INITIAL RELEASE				WEIGHT, LBS 2.83				
<div>PRELIMINARY ONLY</div>				<div> THIRD ANGLE PROJECTION</div>		CATALOG NUMBER: CCC50BNKCVN		
				<div>CONFIDENTIAL: THIS DRAWING AND ITS CONTENTS ARE CONFIDENTIAL AND THE EXCLUSIVE PROPERTY OF HUBBELL POWER SYSTEMS. NO PUBLICATION, DISTRIBUTION OR COPIES MAY BE MADE WITHOUT THE WRITTEN CONSENT OF HUBBELL POWER SYSTEMS. HUBBELL POWER SYSTEMS UNPUBLISHED ALL RIGHTS RESERVED UNDER THE COPYRIGHT LAWS</div>				
ADDITIONAL COMMENTS: --					<div>SIZE C</div>	<div>DWG NO. CC-26971</div>	<div>PART / ASSY NO. --</div>	<div>REV 0</div>
SCALE: 1 : 1			DRN BY: TDO		DATE: 8/19/2020		SHEET 1 OF 1	