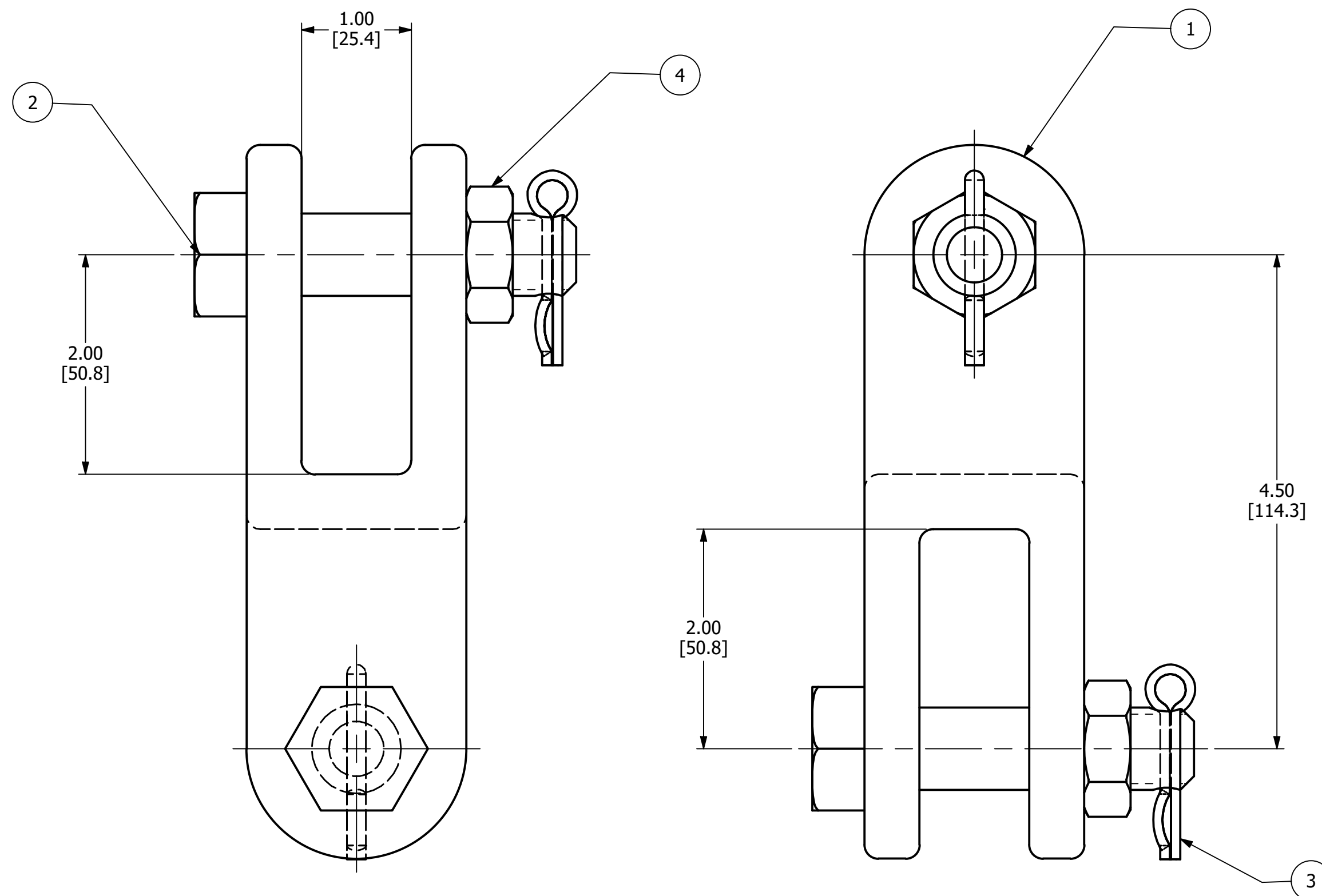


ITEM	DESCRIPTION	MATERIAL
1	CLEVIS EYE FORGING	GALVANIZED FORGED STEEL
2	3/4 CLEVIS BOLT	GALVANIZED STEEL
3	3/4 HEX NUT	GALVANIZED STEEL
4	COTTER KEY	STAINLESS STEEL



NOTES:

- ALL DIMENSIONS FOR REFERENCE ONLY. DISTANCE IN. [MM], FORCE LBS. [kN], TORQUE IN. LBS. [N.m], & WEIGHT LBS. [KG]
- RATINGS
A. ULTIMATE STRENGTH: SEE TABLE
- SUFFIXS & VARIANT CONFIGURATION:
"BNK" - INCLUDES A BOLT, NUT, AND COTTER PIN
"CVN" - INDICATES HARDWARE GALV. PER CSA G164 AND CLEVIS BOLT CHARPY LEVEL 1 COMPLIANT 20 JOULES AT -20°C

200825000121	8/25/2020	TDO	NR	NR	 THIRD ANGLE PROJECTION	 HUBBELL POWER SYSTEMS, Inc.
EC #	DATE	CHANGED BY	CHECKED BY	APPROVED BY		
DESCRIPTION:				WEIGHT, LBS	TITLE	
INITIAL RELEASE				0	CLEVIS-CLEVIS (90) ASSEMBLY	
<p style="text-align: center;">PRELIMINARY ONLY</p>				CONFIDENTIAL: THIS DRAWING AND ITS CONTENTS ARE CONFIDENTIAL AND THE EXCLUSIVE PROPERTY OF HUBBELL POWER SYSTEMS. NO PUBLICATION, DISTRIBUTION OR COPIES MAY BE MADE WITHOUT THE WRITTEN CONSENT OF HUBBELL POWER SYSTEMS. HUBBELL POWER SYSTEMS UNPUBLISHED ALL RIGHTS RESERVED UNDER THE COPYRIGHT LAWS		
				CATALOG NUMBER: CCC5090BNKCVN		REV
SCALE: 1 : 1		DRN BY: TDO	DATE: 8/19/2020	SHEET 1 OF 1		