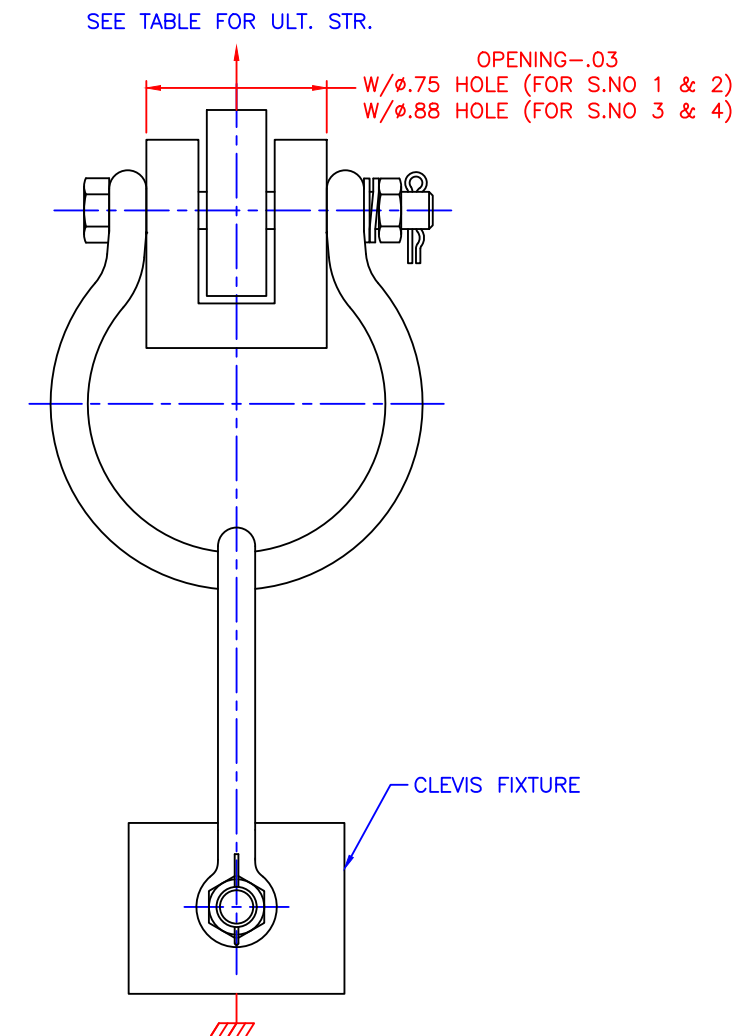
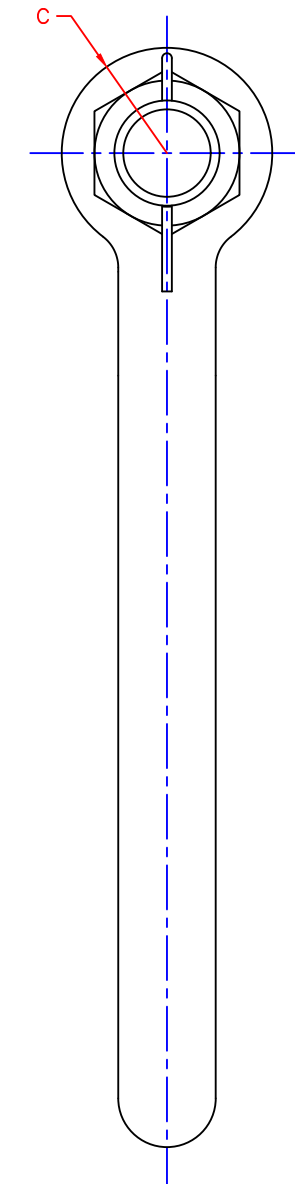
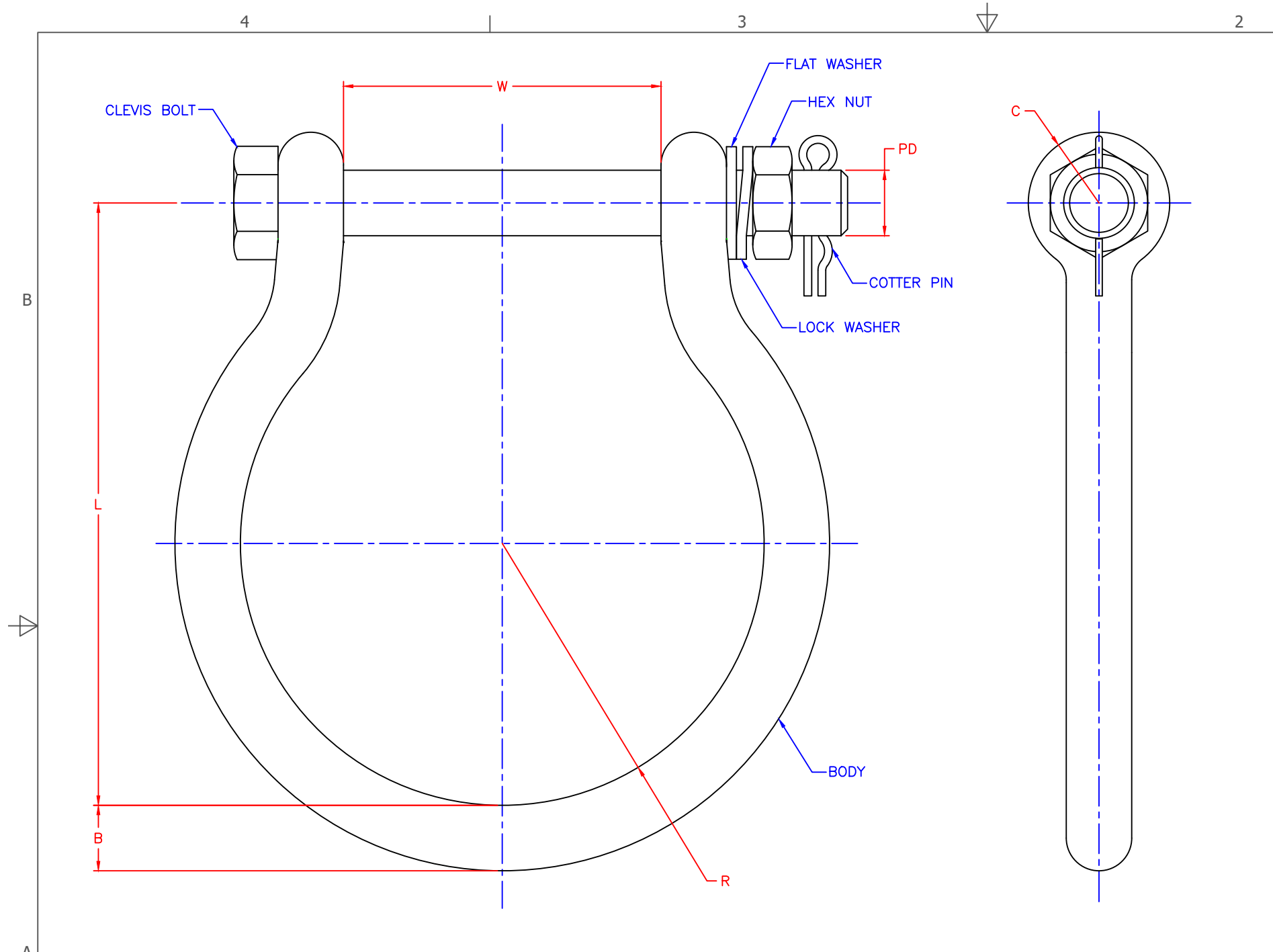



S.NO	CATALOG NUMBER	ULT. STR. (LBS)	L	B	W	C	R	PD	WT. EA (LBS)
1	HDS201005	20,000	5.75	.63	3.03	.68	2.50	.63	2.06
2	HDS251208	25,000	6.38	.63	3.75	.68	2.88	.63	2.21
3	HDS251355	25,000	7.13	.75	3.85	.81	3.13	.75	3.29
4	HDS251557	25,000	7.13	.75	4.31	.81	3.25	.75	3.29



ULTIMATE LOAD DIAGRAM

- NOTES:**
- MATERIAL: BODY – GALV. FORGED STEEL
CLEVIS BOLT, HEX NUT, FLAT WASHER & LOCK WASHER – GALV. STEEL
COTTER PIN – STAINLESS STEEL
 - HOT DIP GALVANIZED PER CSA G164.
 - DIMENSIONS IN INCHES.
 - ANDERSON SPEC 2431 AND 58034.

EC #	DATE	CHG BY	CKD BY	APPD BY
--	--	--	NGD	NR
DESC OF DWG: DRAWING CREATED IN AUTOCAD				
PRELIMINARY ONLY				
REASON (S) FOR CHANGE: --				
DISPOSITION OF MAT'L: --				

 HUBBELL POWER SYSTEMS, Inc.			
TITLE HOLD DOWN SHACKLE ASSEMBLY			
CATALOG NUMBER: SEE TABLE			
SIZE	DWG NO.	PART / ASSY NO.	REV
B	CC-27005	SEE TABLE	A
SCALE: NS	DRN BY: KD	DATE: 09/11/20	SHEET 1 OF 1