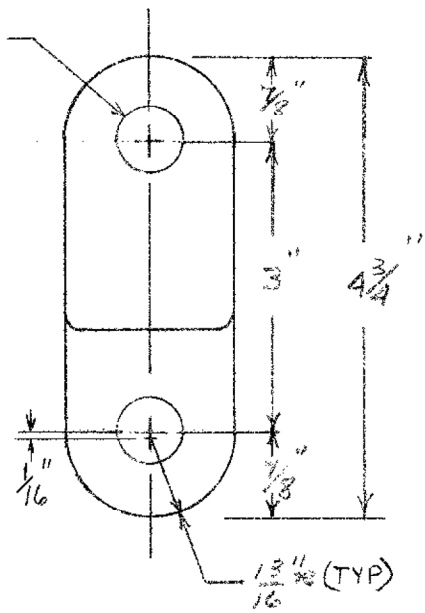


R/16 ± 1/16 TOL WAS ± 1/16  
 ALSO ± 1/16 TOL WAS ± 1/16  
 - 1/32  
 1 CR-216 1-24-80 BSG

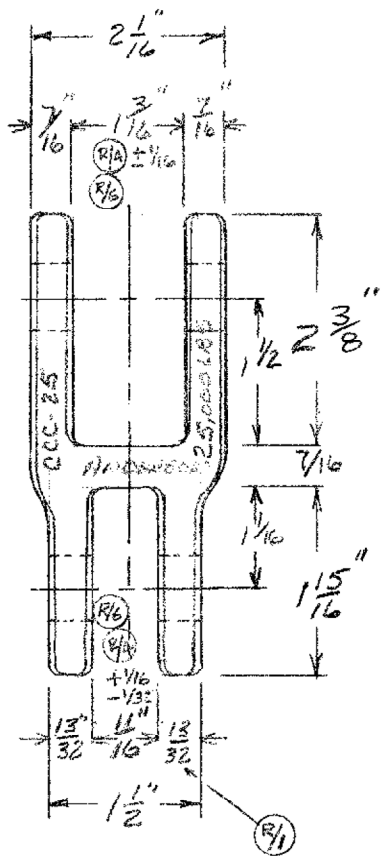
REVISIONS	NO.	DESCRIPTION	DATE	BY
	4	ADD TOL. TO CLEVIS CHARACTERS 10.0-14.0 B	3-12-78	DT
	5	ADD 1/16" ± 2 3/8 WAS 2 1/4 ± 1 3/16	4-9-79	WT
		WAS 1 3/8		WT

REVISIONS	NO.	DESCRIPTION	DATE	BY
	1	13/32" WAS 7/16" - INDICATE DRAFT	1-26-73	DT
	2	ADDED 1/2" ± 1/16 & 7/16	11-29-77	CP
	3	CAT. NO. WAS C-10201	5-26-78	DT

1/16" DIA.  
 2 HOLES



- NOTES:**
- MATERIAL GS4512 GALV. DUCT. IRON
  - MARKING RAISED CHARACTERS
  - ALL RADII..... UNLESS NOTED
  - ADDITION OF MATERIAL FOR DRAFT IS ALLOWABLE UNLESS NOTED.
  - CASTING TOL. ± 1/32 UNLESS NOTED.
  - FIRST MADE FOR.....
  - PRODUCT SPEC.....



- NOTE:**
- MATERIAL: GS4512
  - GALV DUCTILE IRON
  - MARK IN RAISED LETTERS AS SHOWN

DATE 11-7-72  
 DWN BY RH CKD BY DT  
 APPROVED  
 SCALE DO NOT

CLEVIS-CLEVIS  
 25,000

R/16 R/1/2 3/4 5/16  
 ANDERSON ELECTRIC CORP.  
 LEEDS ALABAMA  
 CAT. NO. CCC-25 DWG. NO. P-23068