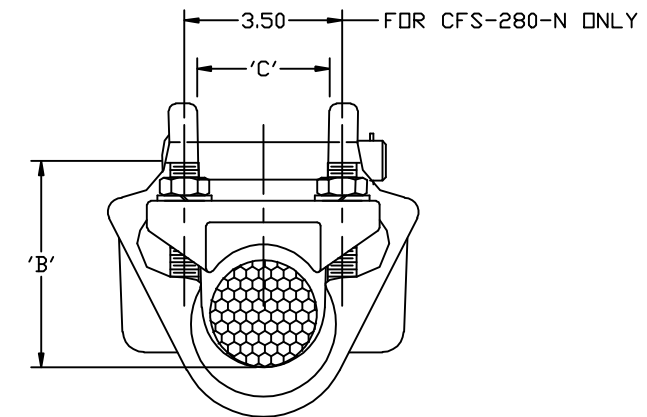


CATALOG NO.	CLAMPING RANGE	DIMENSIONS IN INCHES					ULTIMATE STRENGTH IN POUNDS	CLAMP TAKE-OFF ANGLE
		A	B	C	D	J		
CFS-162-N	1.38-1.62	9.50	3.00	1.72	.62	.50	25,000	17.5°
CFS-182-N	1.55-1.82	10.00	3.25	2.06	.62	.50	25,000	17.5°
CFS-204-N	1.73-2.04	10.50	3.50	2.16	.62	.50	25,000	17.5°
CFS-213-N	1.80-2.13	11.81	3.62	2.25	.62	.62	25,000	17.5°
CFS-227-N	1.93-2.27	11.00	4.00	2.38	.62	.62	25,000	17.5°
CFS-252-N	2.14-2.52	12.00	4.50	2.69	.62	.62	30,000	17.5°
CFS-252-66-N	2.14-2.52	12.00	4.75	2.69	1.00	.62	66,000	20°
CFS-280-N	2.29-2.80	14.00	5.03	3.00	.75	.62	30,000	20°
CFS-280-5/8-N	2.29-2.80	14.00	5.03	3.00	.62	.62	25,000	20°
CFS-280-N-7/8	2.29-2.80	14.00	5.03	3.00	.88	.62	43,000	20°



NOTES:

- 1) MATERIAL: CLAMP BODY & KEEPER 356-T6 ALUM. ALLOY - AEC SPEC. 5404
CLEVIS PIN - STEEL, HOT DIP GALVANIZED - ASTM 273 - 58T
HARDWARE - STEEL, HOT DIP GALVANIZED - ASTM 273 - 58T
COTTER PIN - HUMPBACK - #302 STAINLESS STEEL - ASTM A313
ALL CALVANIZING PER ASTM - A153
- 2) BOLT, NUT & COTTER PIN MAY BE SUBSTITUTED FOR CLEVIS PIN WHEN REQ'D.
TO ORDER ADD SUFFIX "BNK" TO CAT. NO. EXAMPLE CFS-182-N-BNK.

46708	8/8/12	MWA	MWA	ANDERSON TOLERANCE CHART 0.00 \pm 0.10 ANGLES \pm 30' 0.00 \pm 0.009 DO NOT USE 0.000 \pm 0.005 FRACTIONS	HUBBELL POWER SYSTEMS SUSPENSION CLAMP
EC #	DATE	CHG BY	RESP ENG		
DESC OF DWG ADDED CFS25266N ADDED CFS1621235N ADD CFS139105BNK AND UPDATED SPECS --- REASON (S) FOR CHANGE: -- DISPOSITION OF MAT'L: --				<small>CONFIDENTIAL: THIS DRAWING AND ITS CONTENTS ARE CONFIDENTIAL AND THE EXCLUSIVE PROPERTY OF HUBBELL POWER SYSTEMS. NO PUBLICATION, DISTRIBUTION OR COPIES MAY BE MADE WITHOUT THE WRITTEN CONSENT OF HUBBELL POWER SYSTEMS. HUBBELL POWER SYSTEMS UNPUBLISHED. ALL RIGHTS RESERVED UNDER THE COPYRIGHT LAWS.</small>	POWER SYSTEMS TITLE SUSPENSION CLAMP
SIZE C 018417-00		DWG NO. CAT / PART / ASSY NO. CFS-X		REV 06	DO NOT SCALE THIS DRAWING DRN BY MAJ DATE 01/20/99 SHEET 1 OF 2