



PCORE
ELECTRIC

KV CLASS 123 kV BIL 550 kV Uy 93 kV

CURRENT RATING

1200 AMP BOTTOM CONNECTED TRANSFORMER

DWG. CATALOG NUMBER GLAZE COLOR

SD CPOC550C1200X51 BROWN

SD CPOC550M1200X51 LT. GRAY

DATE 6-12-15 REV. DATE

MAXIMUM ALTITUDE 3000 m [10000 ft]

NET WEIGHT 172 kg [380 lb]

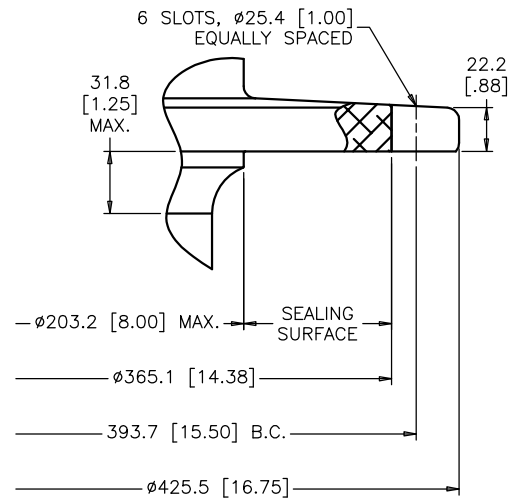
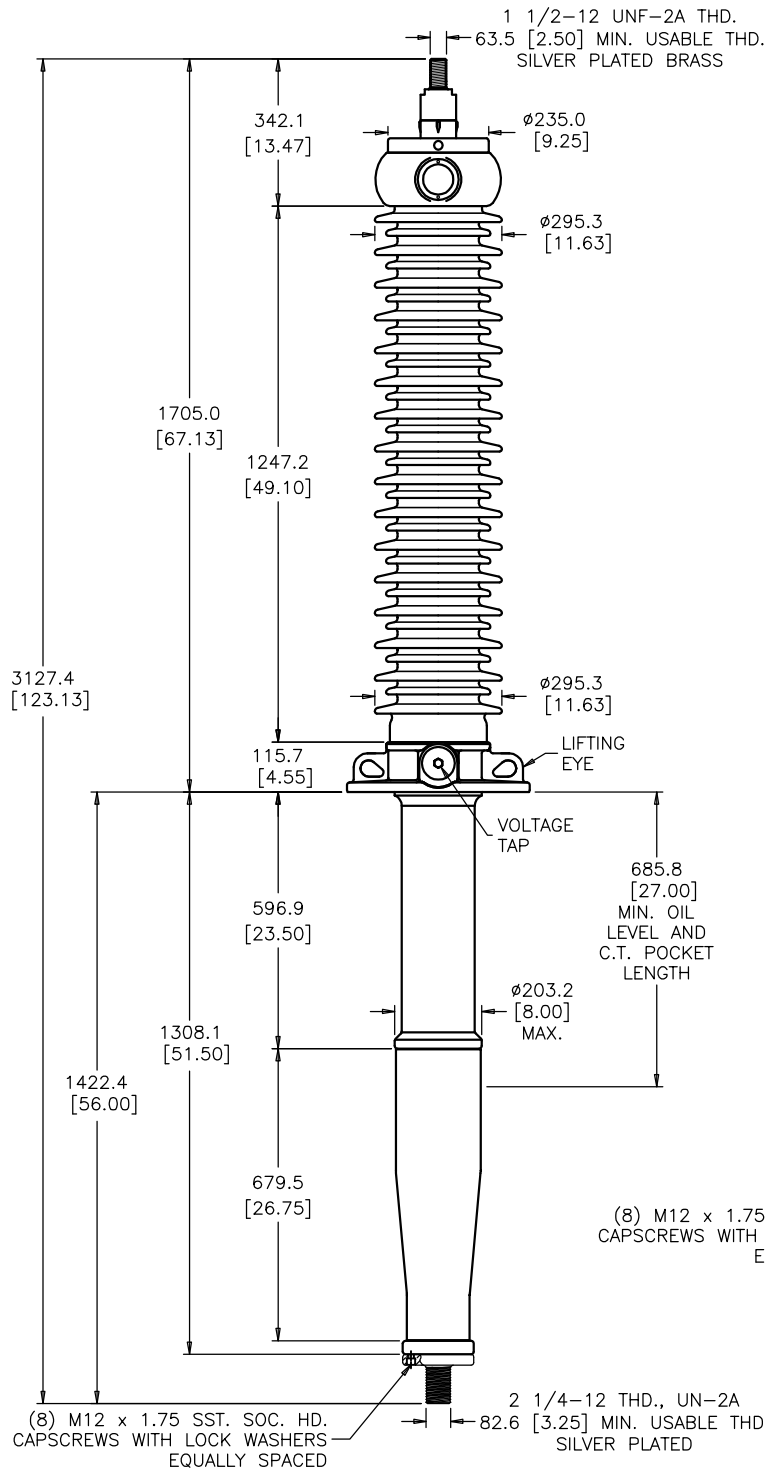
ANGLE OF INCLINATION FROM THE VERTICAL 0° TO 60°

MIN. CREEP 3200.4 [126.00] MIN. STRIKE 1168.4 [46.00]

CREEP/L-G 45.1 [1.77] STD. CSA C88.1

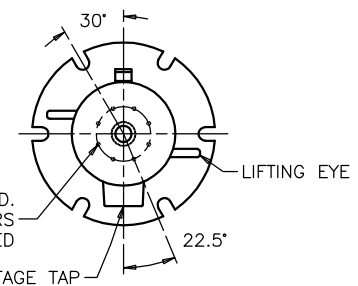
PCB CONTENT OF OIL IS LESS THAN 1 ppm

TITLE POC BUSHING
SILVER PLATED TOP TERMINAL, (6)
SLOTS ON 393.7 [15.50] B.C., 685.8
[27.00] MIN. OIL LEVEL, 1308.1
[51.50] "L" DIMENSION, 2 1/4-12
THD. BOTTOM TERMINAL ADAPTOR WITH
LOCK WASHERS & ALUMINUM TANK



MOUNTING FLANGE DETAIL

ALIGNMENT BETWEEN HOLES IN END CAP & FLANGE AS SHOWN WITHIN ±2°



ALIGNMENT OF FLANGE TOP VIEW

DIMENSIONS IN MILLIMETERS [INCHES]

REVISION

SCALE 1/12

NOTE TO PURCHASER:
ALL SALES OF PCORE PRODUCTS ARE SUBJECT
TO OUR STANDARD TERMS AND CONDITIONS
AND THE LIMITED WARRANTIES THEREUNDER