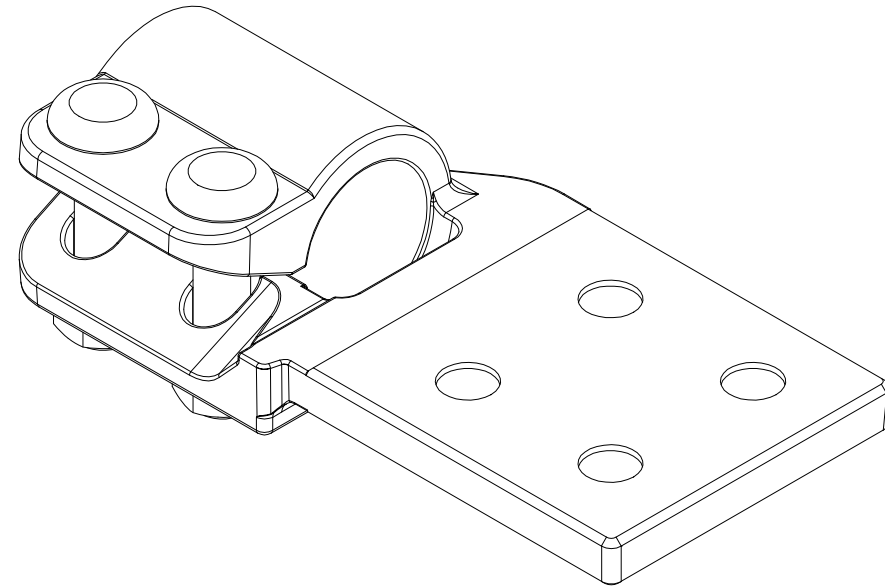
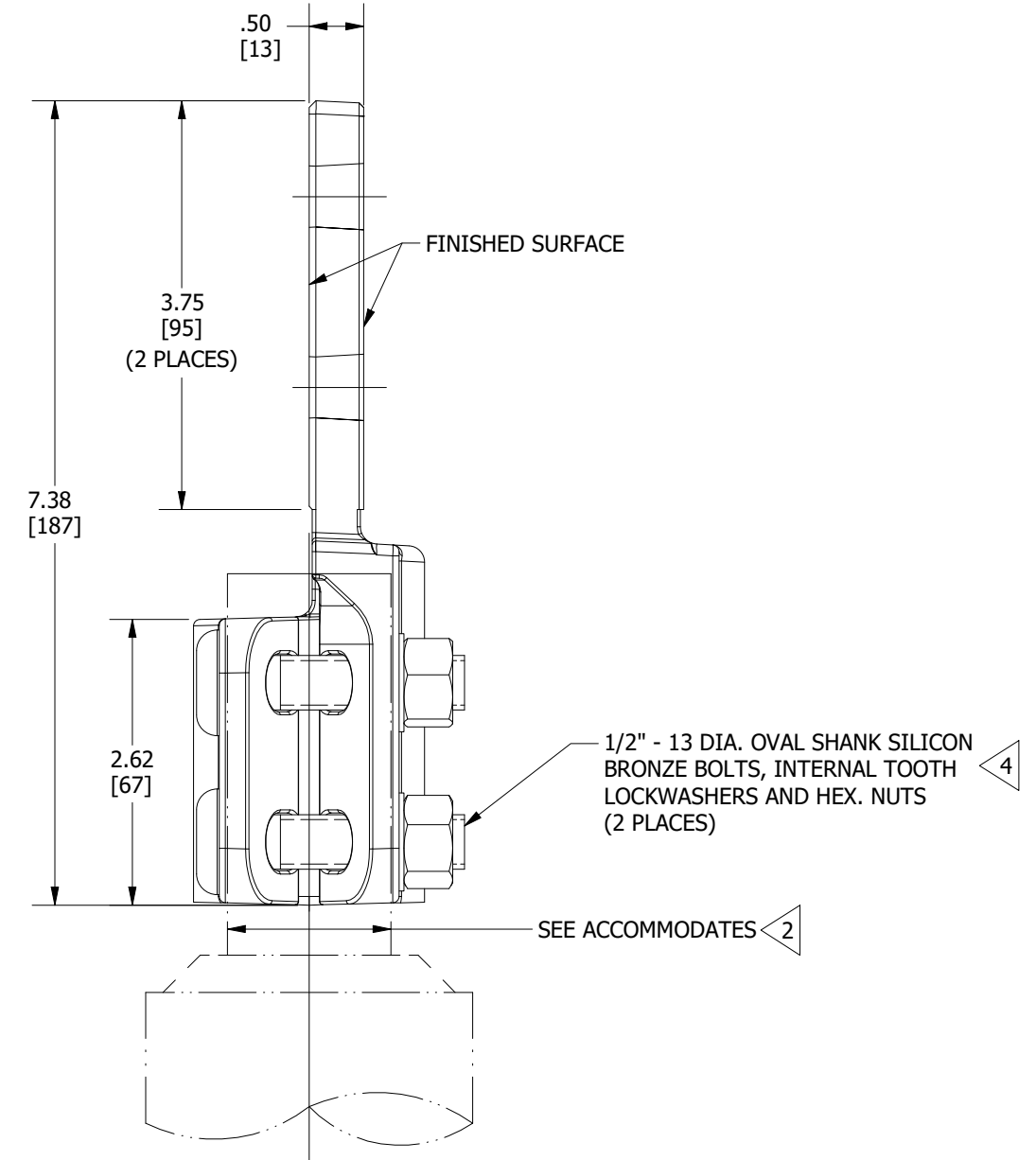
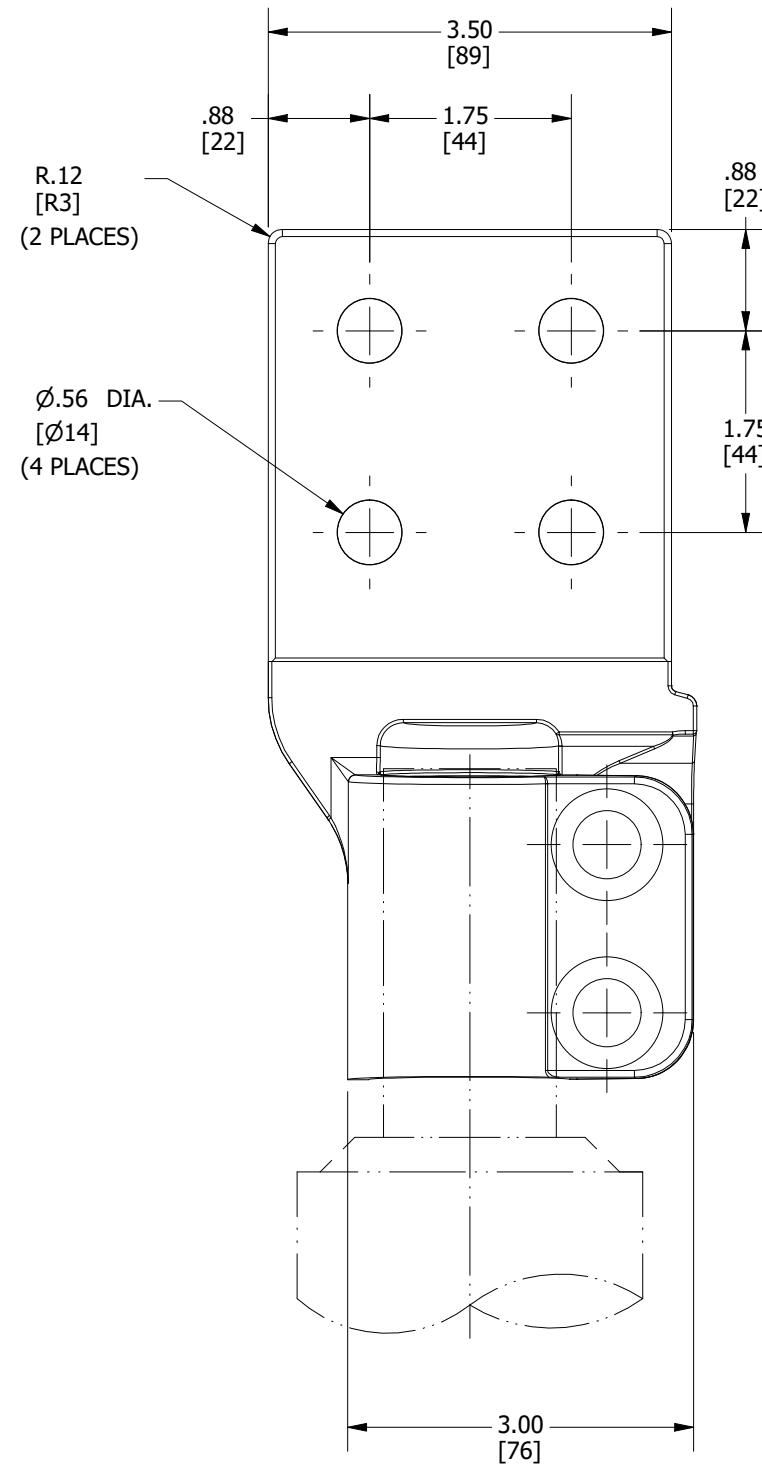


REV	DATE	DESCRIPTION	ECO	BY	C'H'K.
A	07/15/2021	CREATE DOCUMENTATION FOR - FD67CG39	210712010078	VGK	NJS



3D VIEW



NOTES:

1. MATERIAL : CAST COPPER ALLOY
2. ACCOMMODATES: 1 1/2" - 12 TPI STUD.
3. DIMENSIONS IN BRACKETS [] ARE IN MILLIMETERS ROUNDED OFF TO THE NEAREST MILLIMETER, UNLESS OTHERWISE SPECIFIED AND ARE FOR REFERENCE ONLY.
4. NOMINAL BOLT INSTALLATION TORQUE:
1/2" HEX. SILICONE BRONZE HARDWARE 480 LB - IN [55 Nm]
5. THE CONCEPT SHOWN INCORPORATES DESIGN PRINCIPLES WHICH PERMIT OPERATION AT A VOLTAGE GRADIENT NORMALLY ASSOCIATED WITH 138 KV RMS OPERATION PHASE TO PHASE
6. MARKING: BURNDY
FD67CG39
1 1/2" - 12 DIA.

TO ORDER BURNDY® PRODUCTS CALL
 UNITED STATES
 1-800-346-4175 (LONDONDERRY, NH)
 CANADA:
 1-800-387-6487
 FOR PRODUCT INFO: <http://www.burndy.com>

STUD CONNECTOR	
ITEM NO: 27001787	
CAT. NO: FD67CG39	
DRAWN BY: V GOKUL 07/15/2021	
CHECKER: NJ SUDHAKAR 07/15/2021	
DSN APRVL: S RALPHS 09/02/2021	
MFG APRVL: B MERRITT 08/05/2021	
QA APRVL: J BRODEUR 09/23/2021	
MKT APRVL: M THERRIEN 08/05/2021	
PROD FAM: SUBSTATION	DRAWING NO
PROJECT #: --	REV
DOCUMENT TYPE: SALES	SIZE
REL LEVEL: Released	B
CSC032410-01	
SHEET 1 OF 1	
A	

