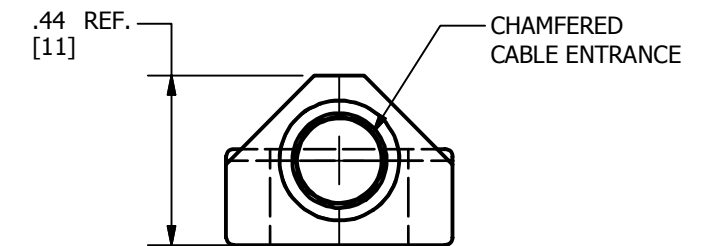
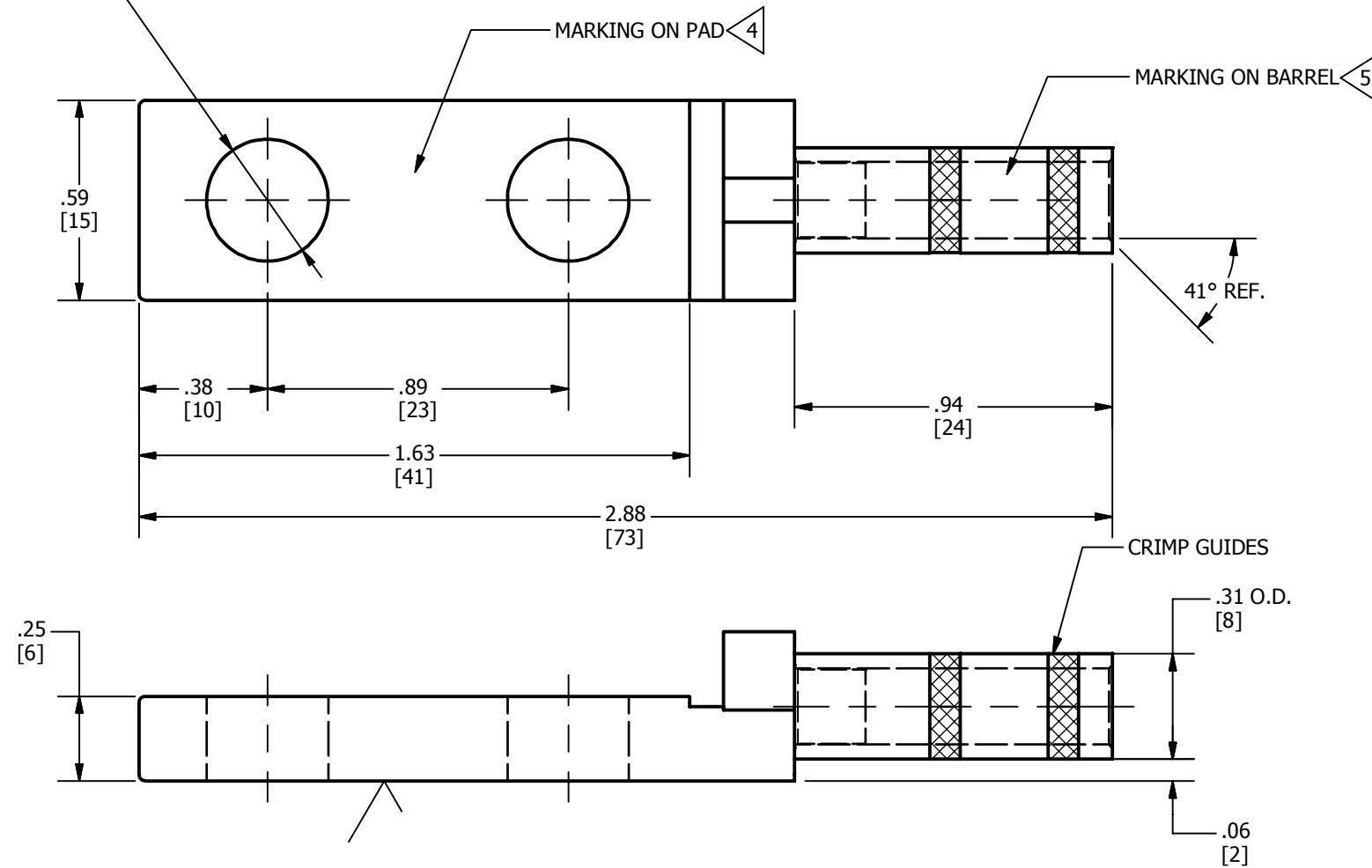


REV	DATE	DESCRIPTION	ECO	BY	C'H'K.
B	09/28/2015	CHANGED NOTE 4 AND BARREL CALLOUT.	41718	SPR	RG

.36 DIA. HOLE THRU.  
[9]  
(2 PLACES)



**NOTES:**

1. DIMENSIONS IN BRACKETS [ ] ARE IN MILLIMETERS ROUNDED OFF TO THE NEAREST MILLIMETER, UNLESS OTHERWISE SPECIFIED AND ARE FOR REFERENCE ONLY.

2. MATERIAL:  
PAD-CAST COPPER ALLOY  
BARREL: E.T.P. COPPER

3. FINISH: TIN-PLATE.

4 MARKING ON PAD:  
MANUFACTURER'S LOGO, CAT.NO.,

5 MARKING ON BARREL:  
DIE INFO

6. UNSPECIFIED CAST RADIUS: 0.03

7. INSTALLATION TOLLING:  
TOOL - Y35,Y39, Y750: REQUIRES Y35P3 ADAPTER.  
Y46 - TOOL ALSO REQUIRES PUADP1 ADAPTER.  
NEST DIE - UV6L  
INDENTOR DIE - Y34PL1

TO ORDER BURNDY® PRODUCTS CALL UNITED STATES 1-800-346-4175 (LONDONDERRY, NH) CANADA: 1-800-361-6975 (QUEBEC) 1-800-387-6487 (ALL OTHER PROVINCES) FOR PRODUCT INFO: <a href="http://www.burndy.com">http://www.burndy.com</a>		CAST LUG	
		ITEM NO: 10022845 CAT. NO: YAB6CCG8	
DRAWN BY: ARAVIND SWAMY 05/05/2015 CHECKER: MANIKANDAN B 05/05/2015 DSN APRVL: R RICHARD 05/18/2015 MFG APRVL: -- QA APRVL: K CHERYL 05/19/2015 MKT APRVL: M BEN 06/05/2015			
PROD FAM: -- PROJECT #: -- DOCUMENT TYPE: SALES REL LEVEL: Released		DRAWING NO SIZE B	REV CSC034743-01 SHEET 1 OF 1 B