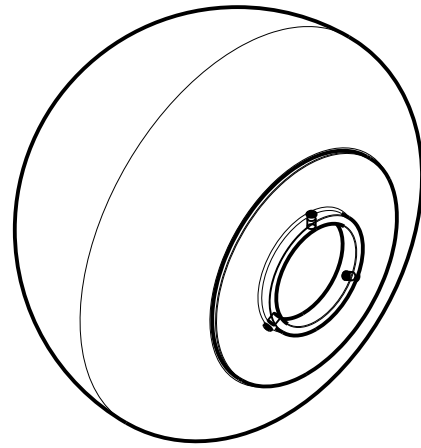
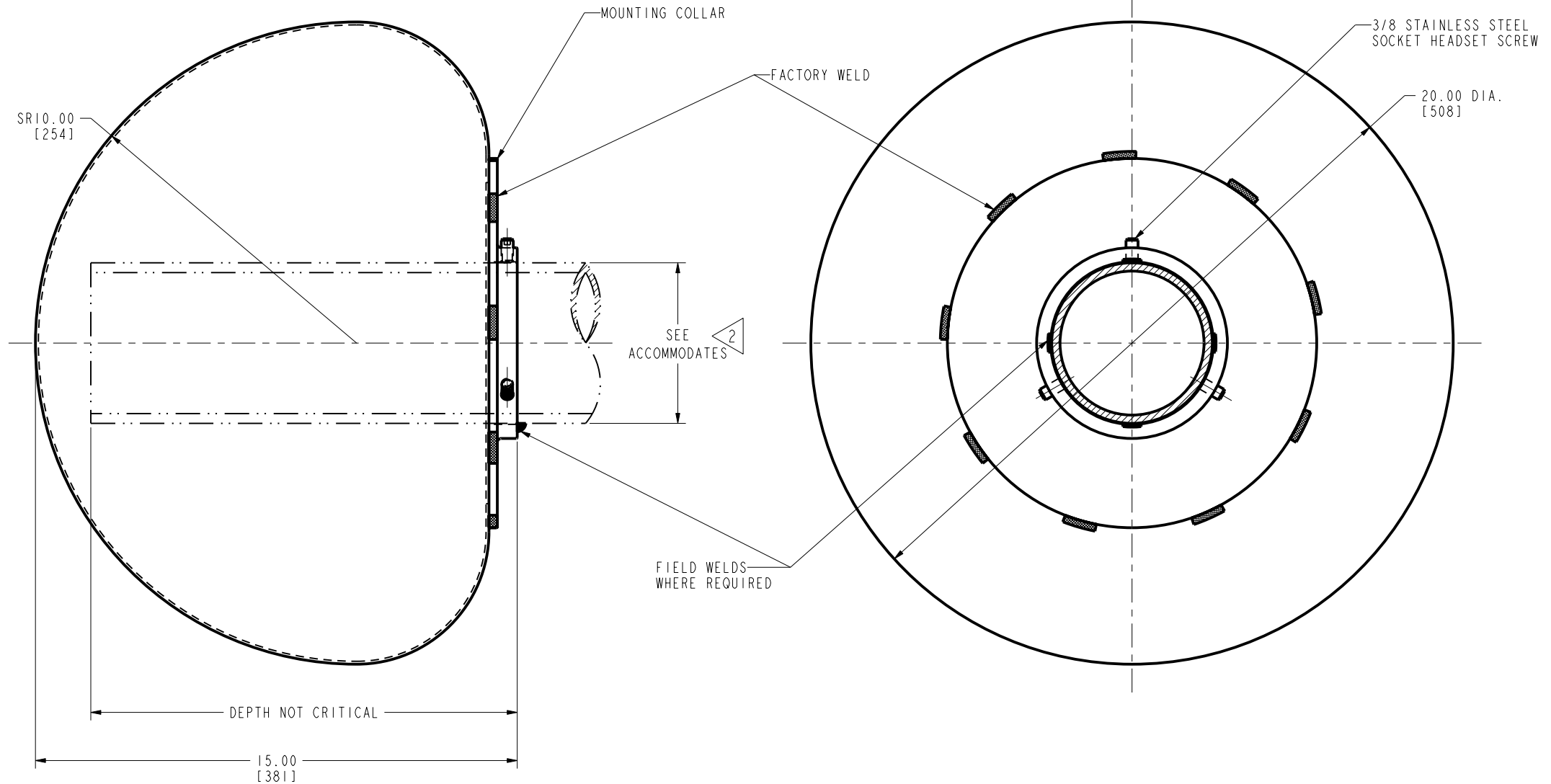


DRAWING NO.
CSD012580-01

REV	DATE	DESCRIPTION	ECO	BY	C'H'K.
A	02/10/2012 00:00:00 AM	REDRAWN TO PRO-E	26725	NG	NJS



3D MODEL VIEW
SCALE 1:4



NOTES:

- 1 MATERIAL: ALUMINUM ALLOY.
- 2 ACCOMMODATES:
4 1/2" IPS (5.000 [127] DIA.) ALUMINUM.
- 3 ±500 KVDC DESIGN FOR AECL SPEC E-81-20423-1
- 4 INSTALLATION:
-TIGHTEN SCREWS HAND TIGHT WITH ALLEN-TYPE KEY.
-IF WELDING REQUIRED SPACE (3-4) 1/4" FILLETS 1/2" LONG EQUALLY AROUND CIRCUMFERENCE OF BUS.
-DO NOT ALLOW BUS TO DENT BELL WHEN INSTALLING
-WELD FILLER ROD ALUMINUM ALLOY 4043 (ALCAN 335)
- 5 DIMENSIONS IN BRACKETS [] DENOTES METRIC UNITS [SI UNITS] AND ARE ROUNDED TO THE NEAREST WHOLE NUMBER. UNLESS OTHERWISE SPECIFIED THESE UNITS SHALL BE USED FOR REFERENCE ONLY.
- 6 MARKING:
BURNDY
SCB23ACG1
4 1/2" IPS AL
500 KVDC

REFERENCE PROJECT

DORSEY ITEM #30
DORSEY STATION
BP2 DC SPARE SMOOTHING REACTOR
3-42300-DC-58370-0029/001

TO ORDER BURNDY® PRODUCTS CALL		CORONA BELL, EHV	
UNITED STATES 1-800-346-4175 (LONDONDERRY, NH)		ITEM NO: 27005098	SCALE: 1:1
CANADA: 1-800-361-6975 (QUEBEC) 1-800-387-6487 (ALL OTHER PROVINCES)		CAT. NO: SCB23ACG1	REV
FOR PRODUCT INFO: http://www.burndy.com		DRAWN BY: N GOPINATH 02/10/12	
		CHECKER: N J SUDHAKAR 02/13/12	
		DSN APPVL: R LAVOIE 02/15/12	
		MFG APPVL: -- --	
		QA APPVL: J HILLMAN 02/14/12	
		MKT APPVL: V TORRES 02/14/12	
		PROJ #:	
		SIZE: D	
		DOCUMENT TYPE: Sales	
		REL LEVEL: Released	
		DRAWING NO: CSD012580-01	
		SHEET 1 OF 1	

REV: PEO200