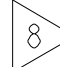
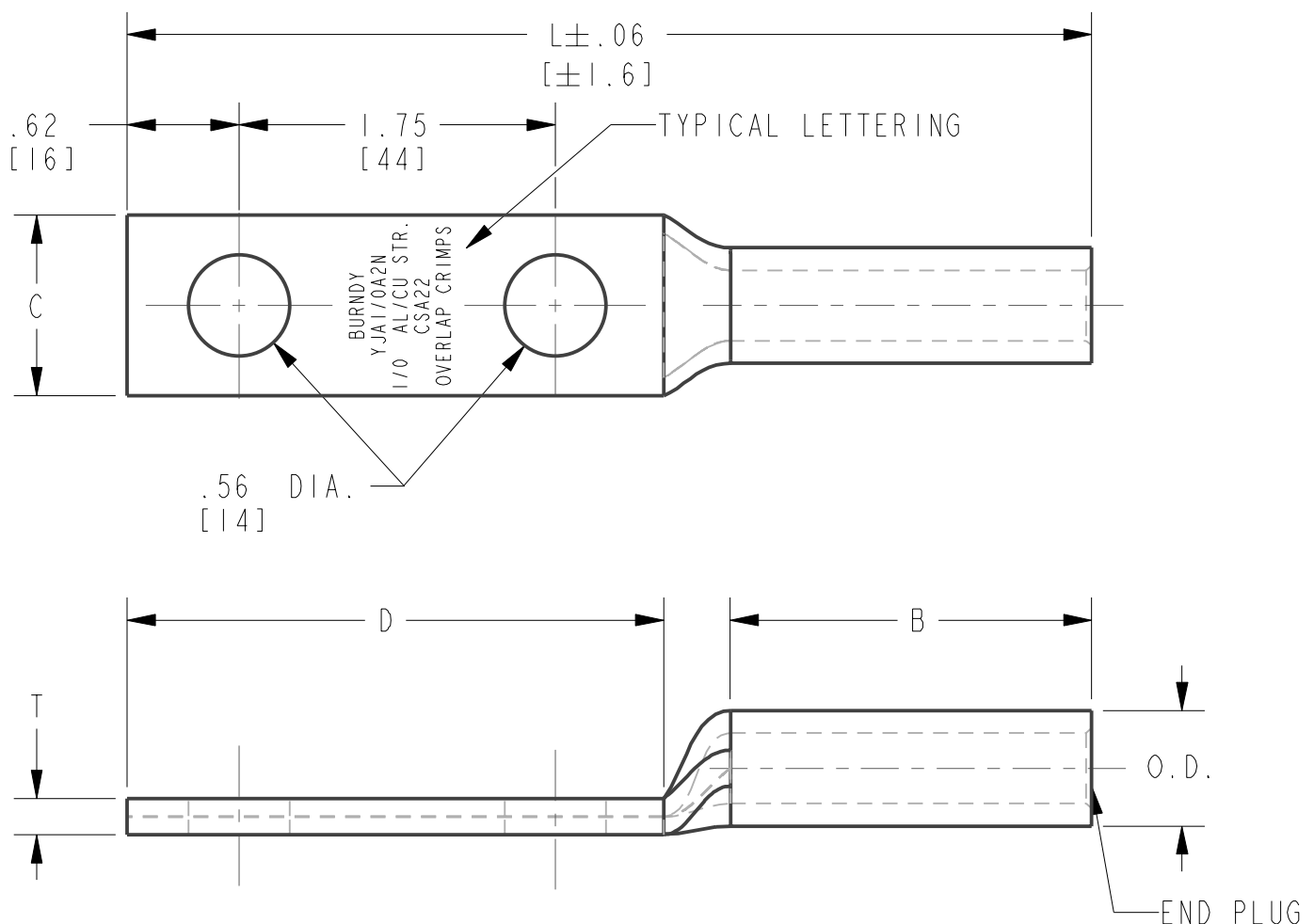




CATALOG. NUMBER	ITEM NUMBER	CATALOG. NUMBER	ITEM NUMBER	ACCOMMODATES AL. OR CU.	DIE INDEX	BARREL O.D.	BARREL I.D.	C	B	D	T	L ±.06 [±1.6]
YJA6CA2N	30000268	YJA6CA2NTN	30000269	6 STR. .184 [4.67] DIA. 6 COMP. .170 [4.32] DIA.	CSA20 (6T)	.562 [14]	.234 [6]	1.00 [25]	1.38 [35]	3.00 [76]	.22 [6]	4.72 [120]
YJA4CA2N	27008357	YJA4CA2NTN	30000270	4 STR. .232 [5.89] DIA. 4 COMP. .214 [5.44] DIA.	CSA22 (6T)	.621 [16]	.247 [6]	1.00 [25]	1.38 [35]	3.00 [76]	.26 [7]	4.72 [120]
YJA2CA2N	27008300	YJA2CA2NTN	27008302	2 STR. .292 [7.42] DIA. 2 COMP. .268 [6.81] DIA.	CSA22 (6T)	.625 [16]	.312 [8]	1.00 [25]	1.38 [35]	3.00 [76]	.23 [6]	4.72 [120]
YJA1/0A2N	10059090	YJA1/0A2NTN	10059091	1/0 STR. .373 [9.47] DIA. 1/0 COMP. .336 [8.53] DIA.	CSA22 (6T)	.640 [16]	.390 [10]	1.00 [25]	2.00 [51]	3.00 [76]	.19 [5]	5.34 [136]
YJA2/0A2N	10059126	YJA2/0A2NTN	27008260	2/0 STR. .419 [10.64] DIA. 2/0 COMP. .376 [9.55] DIA.	CSA22 (6T)	.646 [16]	.441 [11]	1.00 [25]	2.00 [51]	3.00 [76]	.17 [4]	5.40 [137]
YJA3/0A2N	27008310	YJA3/0A2NTN	10058919	3/0 STR. .471 [11.96] DIA. 3/0 COMP. .423 [10.74] DIA.	CSA24 (6T)	.813 [21]	.495 [13]	1.09 [28]	2.00 [51]	3.00 [76]	.31 [8]	5.40 [137]
YJA4/0A2N	10059127	YJA4/0A2NTN	10058909	4/0 STR. .528 [13.41] DIA. 4/0 COMP. .475 [12.07] DIA.	CSA24 (6T)	.837 [21]	.558 [14]	1.13 [29]	1.88 [48]	3.00 [76]	.25 [6]	5.31 [135]
YJA250A2N	10059096	YJA250A2NTN	10059097	250 Kcmil .575 [14.61] DIA. 250 Kcmil COMP. .520 [13.21] DIA. 266.8 Kcmil COMP. .544 [13.82] DIA.	CSA26 (12T)	1.000 [25]	.595 [15]	1.36 [35]	2.00 [51]	3.00 [76]	.41 [10]	5.50 [140]
YJA300A2N	27008318	YJA300A2NTN	27008319	300 Kcmil ASC .629 [16.00] DIA.	CSA26 (12T)	1.031 [26]	.671 [17]	1.41 [36]	2.50 [64]	3.00 [76]	.36 [9]	6.56 [167]
YJA350A2N	10059102	YJA350A2NTN	10059103	350 Kcmil ASC .681 [17.30] DIA.	CSA28 (12T)	1.203 [31]	.718 [18]	1.61 [41]	2.50 [64]	3.00 [76]	.49 [12]	6.56 [167]
YJA500A2N	10059106	YJA500A2NTN	10059107	500 Kcmil ASC .812 [20.62] DIA.	CSA30 (12T)	1.460 [37]	.859 [22]	1.69 [43]	2.97 [75]	3.00 [76]	.56 [14]	7.50 [191]
YJA600A2N	10058901	YJA600A2NTN	10058902	600 Kcmil ASC .893 [22.68] DIA.	CSA30 (12T)	1.468 [37]	.938 [24]	1.69 [43]	3.47 [88]	3.00 [76]	.44 [11]	8.00 [203]
YJA750A2N	10059108	YJA750A2NTN	10059109	750 Kcmil ASC .997 [25.32] DIA.	CSA30 (12T)	1.473 [37]	1.052 [27]	1.69 [43]	3.47 [88]	3.00 [76]	.44 [11]	8.00 [203]
YJA1000A2N	27009229	YJA1000A2NTN	10058958	1000 Kcmil ASC 1.152 [29.26] DIA.	CSA32 (15T) 	1.688 [43]	1.188 [30]	2.50 [64]	3.81 [97]	3.00 [76]	.50 [13]	8.72 [222]

REV	DATE	DESCRIPTION	EC	BY	C'H'K.
E	2021-03-17 00:00:00 EDT	UPDATE AS PER MARKUP	210308005798	MRA	PC



NOTES:

- MATERIAL: ALUMINUM ALLOY.
-  FINISH: IF TIN PLATING IS REQUIRED ADD SUFFIX "TN" TO CAT NO. TINNING MEETS REQUIREMENTS OF O.H. SPEC. W-21M-84.
- BURNDY CSA DIES EMBOSS THE DIE NO. ON THE CONNECTOR WHEN CRIMPING. THE RECOMMENDED DIE IS PERMANENTLY STAMPED ON THE CONNECTOR IN THE UNCRIMPED AREA.
- INSTALLED WITH MD6 AND CORRECT WCSA DIE UP TO 4/0 OR Y35 AND CORRECT UCSA DIE.
- APPLICATION: FOR JOINING ALUMINUM AND OR COPPER CABLE TO TRANSFORMER OR EQUIPMENT PADS.
- BARREL IS FACTORY FILLED WITH PENETROX™ A-13. IF NOT TIN PLATED PAD MUST BE SCRATCH BRUSED AND PENETROXED.
- DIMENSIONS IN BRACKETS [ ] ARE IN MILLIMETERS ROUNDED OFF TO THE NEAREST MILLIMETER, UNLESS OTHERWISE SPECIFIED, AND ARE FOR REFERENCE ONLY.
-  46 SERIES (15T) TOOL IS REQUIRED WITH PUADP-1 U DIE ADAPTER.

SUPERSEDES: DRAWING # CSC28202-19

TO ORDER BURNDY® PRODUCTS CALL UNITED STATES: 1-800-346-4175 (LONDONDERRY, NH) CANADA: 1-800-361-6975 (QUEBEC) 1-800-387-6487 (ALL OTHER PROVINCES) FOR PRODUCT INFO: <a href="http://www.burndy.com">http://www.burndy.com</a>		ALUMINUM TERMINALS	
		ITEM NO: --	CAT. NO: YJA-A-2N (SEE TABLE)
DRAWN BY: G FRANCIS -- CHECKER: P.CHAN 04/29/21 DSN APPVL: P.CHAN 04/29/21 MFG APPVL: J.MICHAUD 04/29/21 QA APPVL: T.WATTS 04/29/21 MKT APPVL: -- --		SCALE: 1:1 PROD FAM: OVERHEAD BARE CONNECTORS DRAWING NO PROJECT #: -- SIZE DOCUMENT TYPE: Sales CSD.028202-01 REL LEVEL: Released SHEET 1 OF 1	