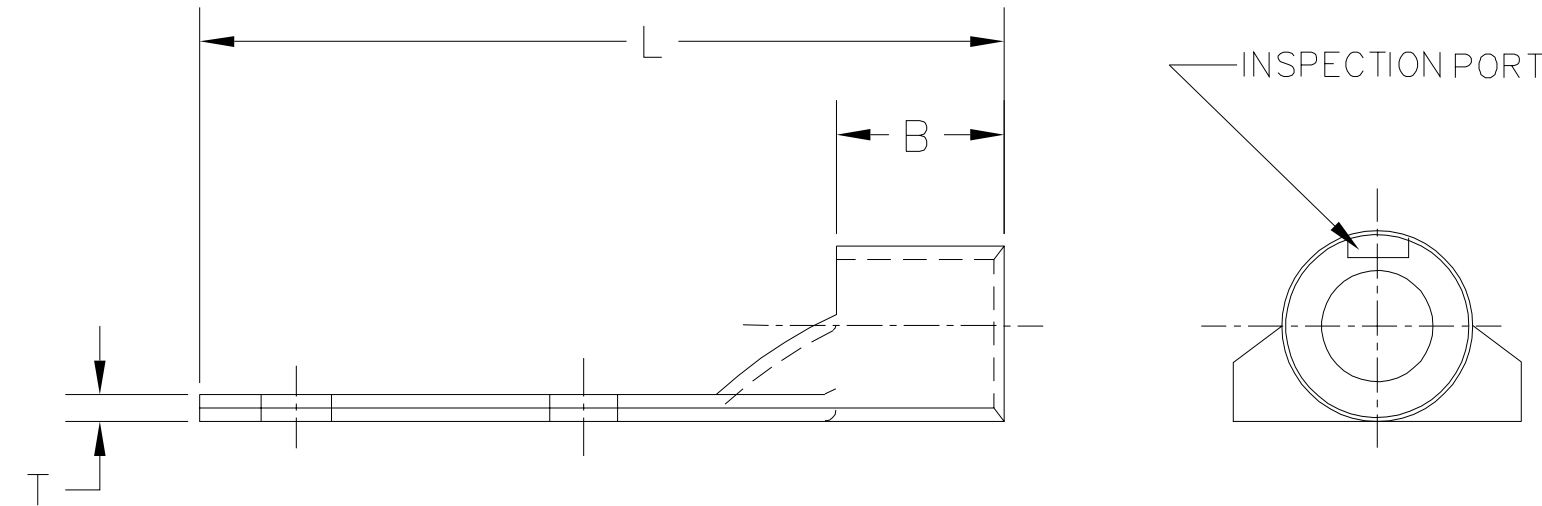
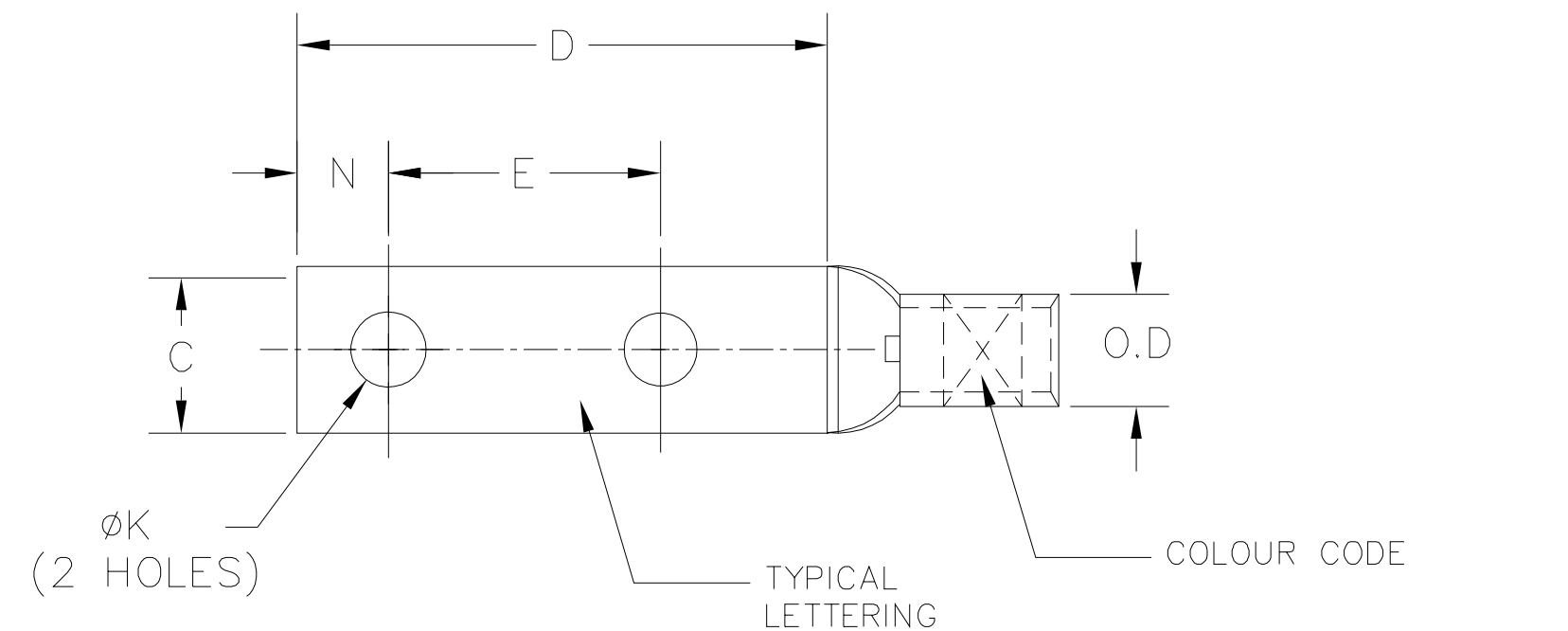
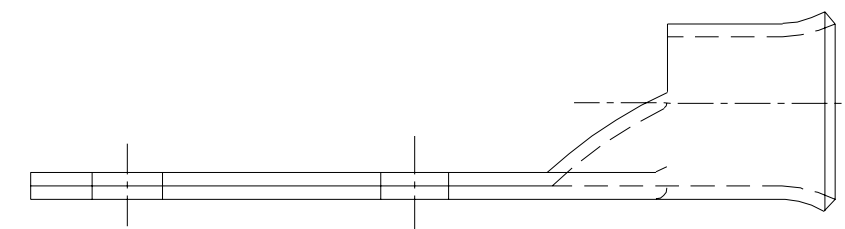


WIRE SIZE	CATALOG NUMBER	STUD SIZE	DIMENSIONS IN INCHES									COLOR CODE	INSTALLATION TOOL INDEX NUMBER
			C ±.02	D ±.02	N ±.02	E ±.02	T ±.01	B ±.02	O.D ±.01	K ±.005	L ±.06		
8	YAL8C2T10	10	.41	1.10	.22	.63	.08	.44	.27	.198	1.62	RED	106A
	YAL8C2T38	3/8	.56	1.80	.38	1.00	.06	.44	.27	.438	2.37		
6	YAL6C2T14	1/4	.44	1.20	.25	.63	.11	.75	.29	.272	2.06	BLUE	7
	YAL6C2T38	3/8	.56	1.80	.38	1.00	.06	.75	.29	.438	2.74		
4	YAL4C2T14	1/4	.56	1.20	.25	.63	.11	.73	.34	.272	2.21	GREY	8
	YAL4C2T38	3/8	.58	1.80	.38	1.00	.10	.73	.34	.438	2.74		
2	YAL2C2T14	1/4	.59	1.20	.25	.63	.11	.70	.42	.272	2.33	BROWN	10
	YAL2C2T38	3/8	.61	1.80	.38	1.00	.11	.70	.42	.438	2.74		
1	YAL1C2T14	1/4	.67	1.20	.25	.63	.13	.73	.46	.272	2.38	GREEN	11
1/0	YAL252T38	3/8	.75	1.80	.38	1.00	.12	.72	.51	.438	2.74	PINK	12
	YAL252N	1/2	.75	3.00	.62	1.75	.12	.72	.51	.560	3.84		
2/0	YAL262T38	3/8	.83	1.80	.38	1.00	.13	.73	.56	.438	2.74	BLACK	13
	YAL262N	1/2	.83	3.00	.62	1.75	.12	.73	.56	.560	4.06		
3/0	YAL272T38	3/8	.91	1.80	.38	1.00	.13	.79	.62	.438	2.84	ORANGE	14
	YAL272N	1/2	.91	3.00	.62	1.75	.13	.79	.62	.560	4.06		
4/0	YAL282T38	3/8	1.02	1.80	.38	1.00	.14	.78	.69	.438	2.84	PURPLE	15
	YAL282N	1/2	1.02	3.00	.62	1.75	.14	.78	.69	.560	4.06		
250	YAL292T38	3/8	1.11	1.80	.38	1.00	.16	.91	.75	.438	3.06	YELLOW	16
	YAL292N	1/2	1.11	3.00	.62	1.75	.16	.91	.75	.560	4.24		
300	YAL302T38	3/8	1.20	1.80	.38	1.00	.16	.97	.81	.438	3.14	WHITE	17
	YAL302N	1/2	1.20	3.00	.62	1.75	.16	.97	.81	.560	4.36		
350	YAL312T38	3/8	1.29	1.80	.38	1.00	.18	.96	.88	.438	3.14	RED	18
	YAL312N	1/2	1.29	3.00	.62	1.75	.18	.96	.88	.560	4.36		
400	YAL322T38	3/8	1.40	1.80	.38	1.00	.19	1.07	.95	.438	3.24	BLUE	19
	YAL322N	1/2	1.40	3.00	.62	1.75	.19	1.07	.95	.560	4.44		
500	YAL342T38	3/8	1.52	1.80	.38	1.00	.22	1.37	1.05	.438	3.54	BROWN	20
	YAL342N	1/2	1.52	3.00	.62	1.75	.22	1.37	1.05	.560	4.74		
600	YAL362T38	3/8	1.70	1.80	.38	1.00	.27	1.44	1.19	.560	3.54	GREEN	22
	YAL362N	1/2	1.70	3.00	.62	1.75	.27	1.44	1.19	.560	4.94		
750	YAL392T38	3/8	1.89	1.80	.38	1.00	.27	1.41	1.30	.438	3.74	BLACK	24
	YAL392N	1/2	1.90	3.00	.62	1.75	.27	1.41	1.30	.560	4.94		
1000	YAL442T38	3/8	2.18	1.80	.38	1.00	.32	1.88	1.49	.488	4.52	WHITE	27
	YAL442N	1/2	2.18	3.00	.62	1.75	.32	1.88	1.49	.560	6.04		

REV.	DATE	DESCRIPTION	ECO	BY	C'K'D.
D	07/13/2020	MU UPDATION	53864	SS	YR



PRODUCT VARIATION BELLED ENTRY ADD SUFFIX "B"



LISTINGS

CSA APPROVED. FILE NO. LR 3934

UL LISTED. FILE NO. E9498

SPECIFICATIONS:

- 1-MATERIAL: PURE ELECTROLYTIC SEAMLESS COPPER TUBE
- 2- FINISH: TIN PLATING

TO ORDER BURNDY®PRODUCTS CALL 1-800-346-4175
MANCHESTER, NH 03109, USA
FOR PRODUCT INFO = <http://www.fciconnect.com>

HYLUG,™ SKIVED BACK, UNTRIMMED

ITEM NO: --

CAT NO: YAL-2T AND YAL-2N

SCALE: ---		DRAWING NO	REV
DRAWN BY: H.GILL 11/02/89		CSD029077-01	D
CHECKER: H.GILL		SIZE	
DSN APPVL: ---		C	SHEET 1 of 1
MFG APPVL: ---			

MKT APPVL: ---
PROD FAM: ---
PROJECT #: ---
DOCUMENT TYPE: Sales
REL LEVEL: RELEASED