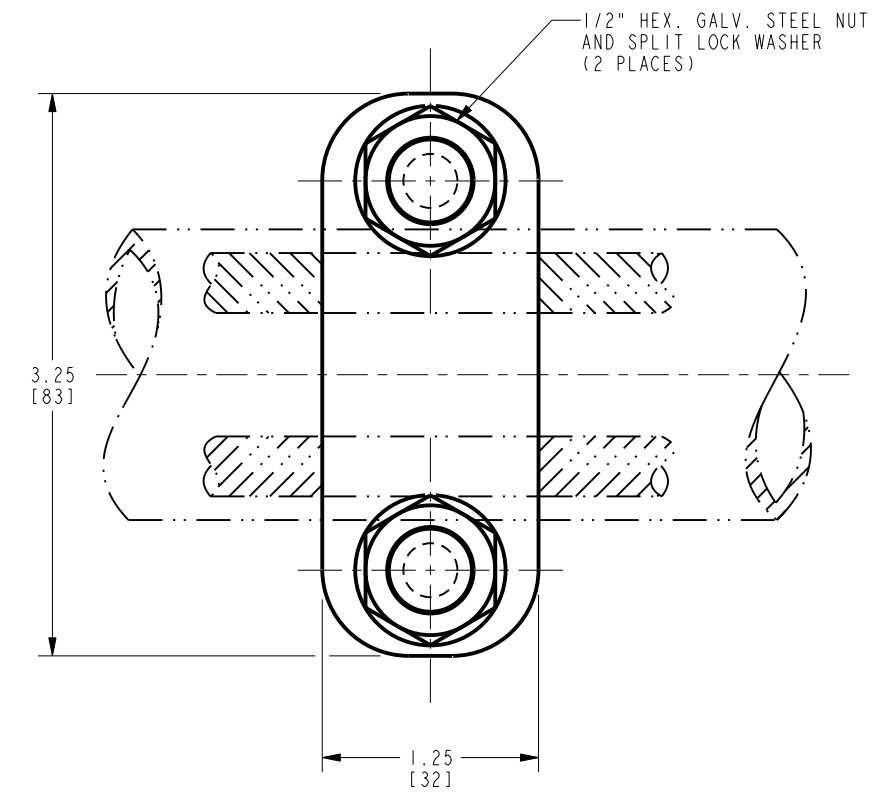
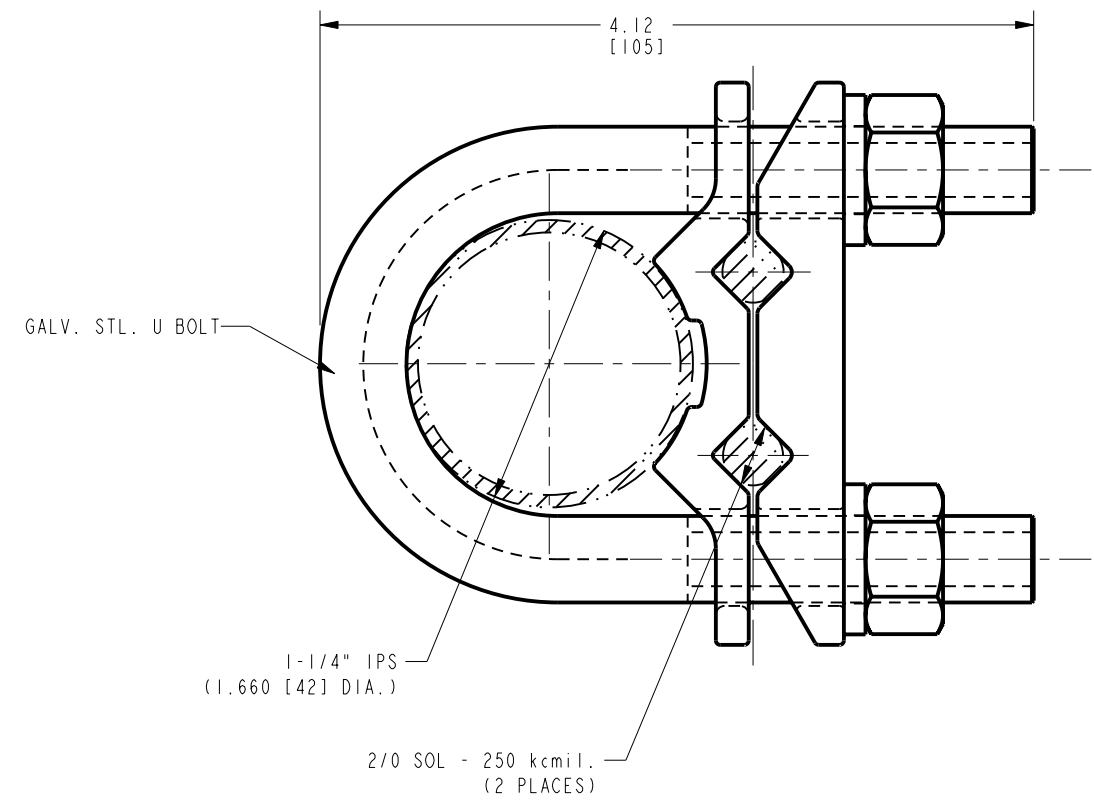


DRAWING NO.
CSKC033484-01

REV	DATE	DESCRIPTION	ECO	BY	C'H'K.
A	10/12/2010 12:00:00 AM	GD1629CG1: REDRAW OLD DRAWINGS AND CREATE NEW DRAWINGS TO LINK IN AGILE	22386	AD	MA



NOTES:

- MATERIAL;
CONNECTOR: CAST COPPER ALLOY.
HARDWARE: GALVANIZED STEEL.
- ACCOMMODATES:
1-1/4" I.P.S. 1.660 [42.16] DIA. TO (2) 2/0 SOL .365 [9.27] DIA.
250 kcmil .575 [14.61] DIA. AL/CU.
- NOMINAL BOLT INSTALLATION TORQUE:
360 IN-LBS. FOR 1/2" HEX. HARDWARE.
- FOR TIN PLATED ADD SUFFIX "TN" TO CATALOGUE NO.
EXAMPLE: GD1629CG1TN.
- TIN PLATING IS FOR CAST COPPER PARTS ONLY.
- DIMENSIONS IN BRACKETS [] ARE IN MILLIMETERS, ROUNDED TO THE NEAREST MILLIMETER, AND ARE FOR REFERENCE ONLY.

TO ORDER BURNDY® PRODUCTS CALL
 UNITED STATES:
 1-800-346-4175 (LONDONDERRY, NH)
 CANADA:
 1-800-361-6975 (QUEBEC)
 1-800-387-6487 (ALL OTHER PROVINCES)
 FOR PRODUCT INFO: <http://www.burndy.com>

GROUND CLAMP			
ITEM NO: 27002146		DRAWN BY: VST 04/23/98	
CAT. NO: GD1629CG1		CHECKER: --	
DSN APPVL: --		MFG APPVL: --	
GA APPVL: --		MKT APPVL: --	
PROD FAM: MECHANICAL GROUNDING		SCALE: 3:2	
PROJECT #: --		DRAWING NO	
DOCUMENT TYPE: Sales		CSKC033484-01	
REL LEVEL: Released		SHEET 1 OF 1	

REV: PE0200