

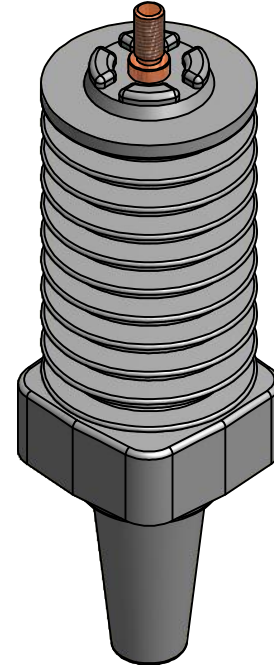
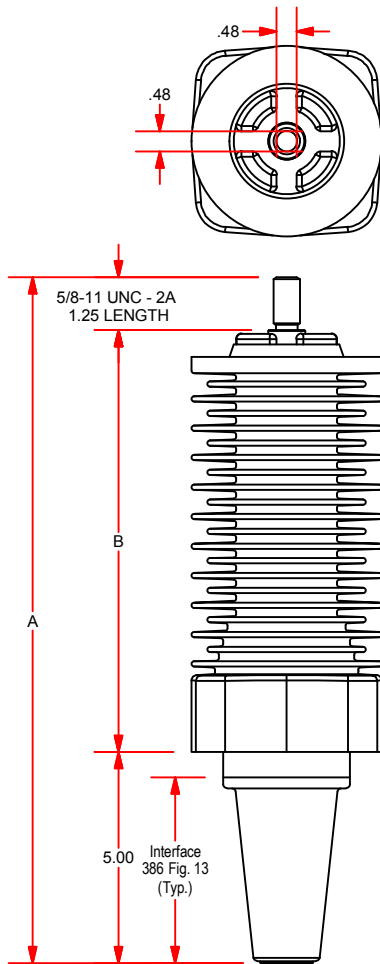
38kV Dead Front Bushing



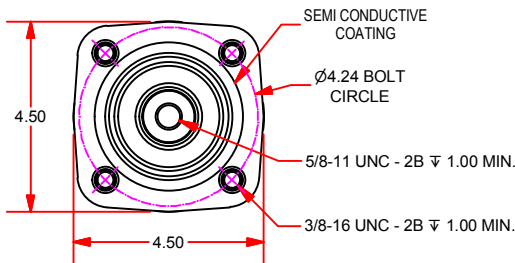
Technical Data

Indoor and Outdoor Applications

Cycloaliphatic Epoxy

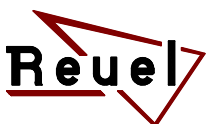


SHOWN IS A
U-DBF38C



Part Number	Dimensions		Electrical Ratings						Current Capacity (RMS)		Momentary Withstand (RMS, Sym.)		Approx. Weight (LBS)
	Total Height (A)	Strike Distance (B)	Voltage Class(kV)	BIL (kV)	Withstand 1 Min. 60 Hz Dry(kV)	Withstand 15 Min. DC (kV)	Corona Extinction	Leakage Distance (in.)	Continuous	8 Hr. Overload	10 Cycles	3 Seconds	
U-DFB38C	16.22	9.97	38	150	50	103	26	41.8	600 Amps	900 Amps	25kA	10kA	10.26
U-DFB38	15.09	10.09	38	150	50	103	26	41.8	600 Amps	900 Amps	25kA	10kA	8.53
U-DFB38C1200	15.09	10.09	38	150	50	103	26	41.8	1200 Amps	1400 Amps	25kA	10kA	12.55

- 1.- The Reuel 600/1200 Amp 38kV Dead Front Bushings meet all requirements of the ANSI/IEEE 386 interface. The bushings are designed for mounting in transformers, switchgear, and other air insulated apparatus.
- 2.- Part number U-DFB38C has an .875" diameter conductor with a 1.25" diameter flared end at the 600 amp interface; Part number U-DFB38 has a 1.25" diameter aluminum conductor; Part number U-DFB38C1200 has a 1.25" diameter copper conductor.
- 3.- All dead front bushings are available with male or female 5/8-11 threads (Top of conductor only), the 600 amp interface of the U-DFB38C can be unplated or tin plated. The U-DFB38C1200 will be silver plated on both top and bottom of the conductor.



PCORE Electric Co., Inc.
200 West Dewey St.
Goldsboro, NC 27530

Phone: +1.919.734.0460
Fax: +1.919.734.0902
www.hubbellpowersystems.com

Data Sheet DSDFB-02
09 October 2015