

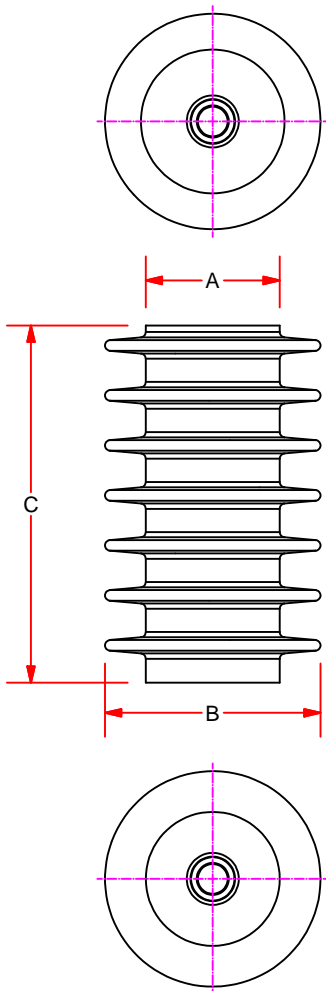
# Stand-Off Insulators (High Creep)



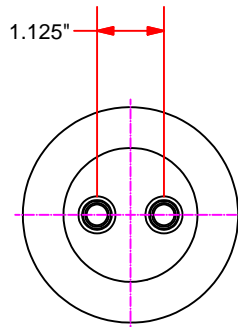
Technical Data

Indoor and Outdoor Applications

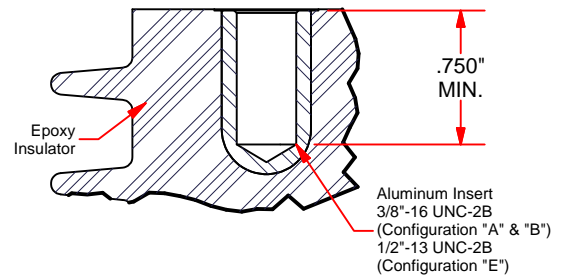
Cycloaliphatic Epoxy



INSERT CONFIGURATION "A" & "E"  
See Note 1



INSERT CONFIGURATION "B"  
See Note 1



Insert Detail  
Insert Configuration "E"  
Shown

Part Number	Dimensions (in.)			Electrical Ratings, (kV)						Mechanical Ratings (lbs.)			Approx. Weight (lbs.)
	A	B	C	Voltage Class(kV)	BIL	Withstand 1 Min. 60 Hz Dry	Withstand 10 Sec. 60 Hz Wet	Leakage Distance (in.)	Dry Arc Distance (in.)	Cantilever	Tensile	Compression	
U-SOI2260AA	2.25	3.62	6.00	15	95	36	26	13.85	6.00	600	2,000	20,000	2.4
U-SOI2267AA	2.25	3.62	6.75	25	110	45	45	15.70	6.75	600	2,000	20,000	2.7
U-SOI2270AA	2.25	3.62	7.00	25	110	50	50	15.97	7.00	600	2,000	20,000	2.8
U-SOI2260BB	2.25	3.62	6.00	15	95	36	26	13.85	6.00	600	2,000	20,000	2.4
U-SOI2267BB	2.25	3.62	6.75	25	110	45	40	15.70	6.75	600	2,000	20,000	2.7
U-SOI2270BB	2.25	3.62	7.00	25	110	50	45	15.97	7.00	600	2,000	20,000	2.8
U-SOI2275EE	2.25	3.62	7.50	25	110	50	45	15.97	7.00	600	2,000	20,000	3.0

① High Creep insulators offer three insert configurations. These configurations are noted at the end of the part number. Example: U-SOI2260AA. Each letter stands for an insert configuration.

② These insulators must be mounted on a flat surface that is at least as wide as the base of the insulator. Cantilever values are measured at 2.50" above insulator top surface.

Example: -AA represents (1) 3/8"-16 threaded insert in each end.  
 -BB represents (2) 3/8"-16 threaded insert in each end.  
 -EE represents (1) 1/2"-13 threaded insert in each end.



PCORE Electric Co., Inc.  
 200 West Dewey St.  
 Goldsboro, NC 27530

Phone: +1.919.734.0460  
 Fax: +1.919.734.0902  
 www.hubbellpowersystems.com

Data Sheet DSSOI-01  
 03 November 2015